

TRAPA/SSR1 Polyclonal antibody

Catalog Number: 10583-1-AP **8 Publications**

Basic Information

Catalog Number: 10583-1-AP	GenBank Accession Number: BC007710	Purification Method: Antigen affinity purification
Size: 300 µg/ml	GeneID (NCBI): 6745	Recommended Dilutions: WB 1:2000-1:10000 IHC 1:50-1:500 IF 1:50-1:500
Source: Rabbit	UNIPROT ID: P43307	
Isotype: IgG	Full Name: signal sequence receptor, alpha	
Immunogen Catalog Number: AG0878	Calculated MW: 34 kDa	
	Observed MW: 34 kDa	

Applications

Tested Applications:
IF/ICC, IHC, WB, ELISA

Cited Applications:
WB, IF, IHC

Species Specificity:
human, mouse, monkey

Cited Species:
human, rat, monkey

Note-IHC: suggested antigen retrieval with TE buffer pH 9.0; (*) Alternatively, antigen retrieval may be performed with citrate buffer pH 6.0

Positive Controls:

WB: COS-7 cells, HepG2 cells, human liver tissue, mouse liver tissue, L02 cells

IHC: human ovary tumor tissue, human lung tissue

IF: HEK-293 cells,

Background Information

TRAPA (translocon-associated protein subunit alpha), also known as SSR1 (signal sequence receptor subunit alpha), is a 34-kDa single-spanning membrane glycoprotein of the endoplasmic reticulum (ER) (PMID: 8050590). It is a part of the tetrameric TRAP complex (TRAP-alpha, TRAP-beta, TRAP-delta and TRAP-gamma) which functions in regulating the retention of ER resident proteins (PMID: 7916687). The TRAP complex is also involved in endoplasmic reticulum-associated degradation (ERAD) (PMID: 17380188).

Notable Publications

Author	Pubmed ID	Journal	Application
S Orvokki Mattila	34042202	FASEB J	WB
Pengli Zheng	30030520	Cell Res	WB
Chatchai Phoomak	33523898	Sci Adv	WB

Storage

Storage:
Store at -20°C. Stable for one year after shipment.

Storage Buffer:
PBS with 0.02% sodium azide and 50% glycerol pH 7.3.

Aliquoting is unnecessary for -20°C storage

For technical support and original validation data for this product please contact:

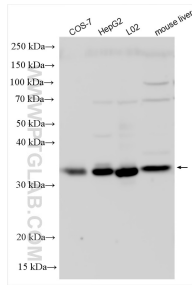
T: 4006900926

E: Proteintech-CN@ptglab.com

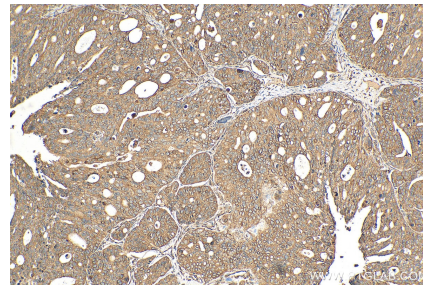
W: ptgcn.com

This product is exclusively available under Proteintech Group brand and is not available to purchase from any other manufacturer.

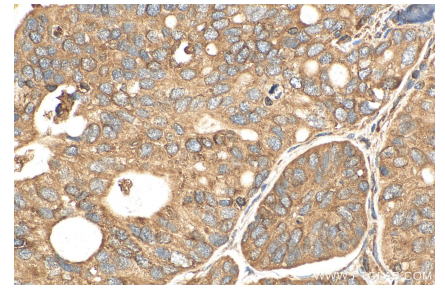
Selected Validation Data



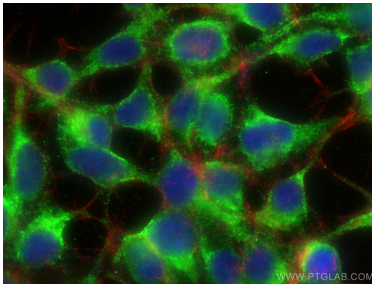
Various lysates were subjected to SDS PAGE followed by western blot with 10583-1-AP (TRAPA/SSR1 antibody) at dilution of 1:5000 incubated at room temperature for 1.5 hours.



Immunohistochemical analysis of paraffin-embedded human ovary tumor tissue slide using 10583-1-AP (TRAPA/SSR1 antibody) at dilution of 1:200 (under 10x lens). Heat mediated antigen retrieval with Tris-EDTA buffer (pH 9.0).



Immunohistochemical analysis of paraffin-embedded human ovary tumor tissue slide using 10583-1-AP (TRAPA/SSR1 antibody) at dilution of 1:200 (under 40x lens). Heat mediated antigen retrieval with Tris-EDTA buffer (pH 9.0).



Immunofluorescent analysis of (-20°C Ethanol) fixed HEK-293 cells using TRAPA/SSR1 antibody (10583-1-AP) at dilution of 1:200 and CoraLite®488-Conjugated AffiniPure Goat Anti-Rabbit IgG(H+L), CL594-phalloidin (red).