

For Research Use Only

# PELO Polyclonal antibody, PBS Only

Catalog Number: 10582-1-PBS

Featured Product



## Basic Information

**Catalog Number:**

10582-1-PBS

**Source:**

Rabbit

**Isotype:**

IgG

**Immunogen Catalog Number:**

AG0873

**GenBank Accession Number:**

BC005889

**GeneID (NCBI):**

53918

**UNIPROT ID:**

Q9BRX2

**Full Name:**

pelota homolog (Drosophila)

**Calculated MW:**

43 kDa

**Observed MW:**

43-45 kDa

**Purification Method:**

Antigen affinity purification

## Applications

**Tested Applications:**

WB, IHC, IF/ICC, IP, Indirect ELISA

**Species Specificity:**

human, mouse, rat

## Background Information

The Peló gene was originally identified in a mutagenesis screen for spermatogenesis-specific genes of *Drosophila melanogaster*. The PELO is required for the meiotic division during the G2/M transition, and functions in recognizing stalled ribosomes and triggering endonucleolytic cleavage of the mRNA, a mechanism to release non-functional ribosomes and degrade damaged mRNAs [PMID:12556505]. It may participate in the machinery of protein synthesis or in the regulation of mRNA translation [PMID:9584085].

## Storage

**Storage:**

Store at -80°C.

**The product is shipped with ice packs. Upon receipt, store it immediately at -80°C**

**Storage Buffer:**

PBS only, pH7.3

For technical support and original validation data for this product please contact:

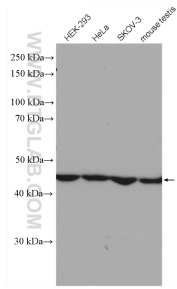
T: 4006900926

E: [Proteintech-CN@ptglab.com](mailto:Proteintech-CN@ptglab.com)

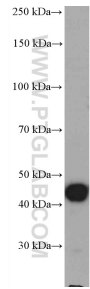
W: [ptgcn.com](http://ptgcn.com)

**This product is exclusively available under Proteintech Group brand and is not available to purchase from any other manufacturer.**

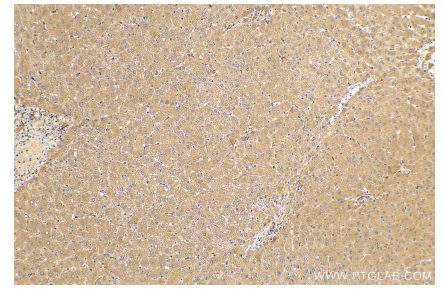
## Selected Validation Data



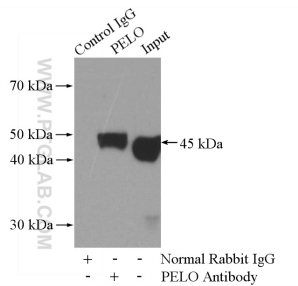
Various cells were subjected to SDS PAGE followed by western blot with 10582-1-AP (PELO antibody) at dilution of 1:3000 incubated at room temperature for 1.5 hours. This data was developed using the same antibody clone with 10582-1-PBS in a different storage buffer formulation.



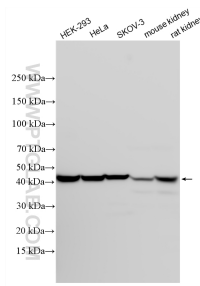
mouse testis tissue were subjected to SDS PAGE followed by western blot with 10582-1-AP (PELO antibody) at dilution of 1:3000 incubated at room temperature for 1.5 hours. This data was developed using the same antibody clone with 10582-1-PBS in a different storage buffer formulation.



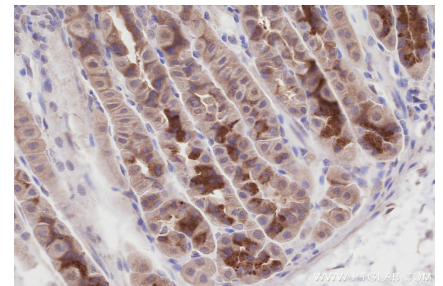
Immunohistochemical analysis of paraffin-embedded human liver tissue slide using 10582-1-AP (PELO antibody) at dilution of 1:200 (under 10x lens). Heat mediated antigen retrieval with Tris-EDTA buffer (pH 9.0). This data was developed using the same antibody clone with 10582-1-PBS in a different storage buffer formulation.



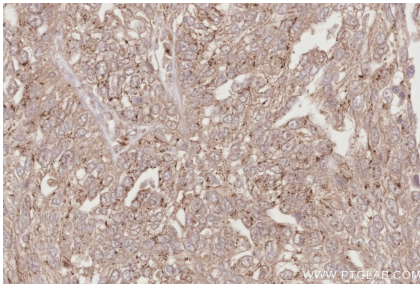
IP result of anti-PELO (IP:10582-1-AP, 4ug; Detection:10582-1-AP 1:500) with HEK-293 cells lysate 1200ug. This data was developed using the same antibody clone with 10582-1-PBS in a different storage buffer formulation.



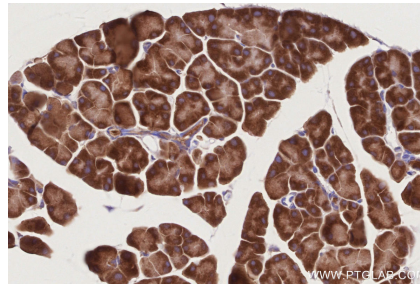
Various lysates were subjected to SDS PAGE followed by western blot with 10582-1-AP (PELO antibody) at dilution of 1:6000 incubated at room temperature for 1.5 hours. This data was developed using the same antibody clone with 10582-1-PBS in a different storage buffer formulation.



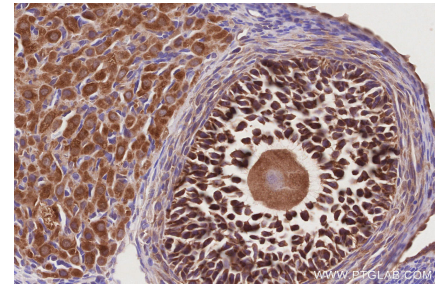
Immunohistochemical analysis of paraffin-embedded mouse stomach tissue slide using 10582-1-AP (PELO antibody) at dilution of 1:1000 (under 40x lens). Heat mediated antigen retrieval with Tris-EDTA buffer (pH 9.0). This data was developed using the same antibody clone with 10582-1-PBS in a different storage buffer formulation.



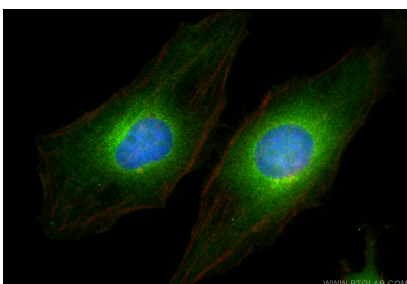
Immunohistochemical analysis of paraffin-embedded human ovary cancer tissue slide using 10582-1-AP (PELO antibody) at dilution of 1:500 (under 40x lens). Heat mediated antigen retrieval with Tris-EDTA buffer (pH 9.0). This data was developed using the same antibody clone with 10582-1-PBS in a different storage buffer formulation.



Immunohistochemical analysis of paraffin-embedded mouse pancreas tissue slide using 10582-1-AP (PELO antibody) at dilution of 1:500 (under 40x lens). Heat mediated antigen retrieval with Tris-EDTA buffer (pH 9.0). This data was developed using the same antibody clone with 10582-1-PBS in a different storage buffer formulation.



Immunohistochemical analysis of paraffin-embedded rat ovary tissue slide using 10582-1-AP (PELO antibody) at dilution of 1:500 (under 40x lens). Heat mediated antigen retrieval with Tris-EDTA buffer (pH 9.0). This data was developed using the same antibody clone with 10582-1-PBS in a different storage buffer formulation.



WWW.PTGLAB.COM

Immunofluorescent analysis of (4% PFA) fixed HeLa cells using PELO antibody (10582-1-AP) at dilution of 1:400 and CoraLite®488-Conjugated Goat Anti-Rabbit IgG(H+L) (SA00013-2), CL594-Phalloidin (red). This data was developed using the same antibody clone with 10582-1-PBS in a different storage buffer formulation.