

For Research Use Only

CCT3 Polyclonal antibody

Catalog Number: 10571-1-AP

Featured Product

17 Publications



Basic Information

Catalog Number:

10571-1-AP

Source:

Rabbit

Isotype:

IgG

Immunogen Catalog Number:

AG0843

GenBank Accession Number:

BC006501

GeneID (NCBI):

7203

UNIPROT ID:

P49368

Full Name:

chaperonin containing TCP1, subunit 3 (gamma)

Calculated MW:

60 kDa

Observed MW:

60 kDa

Purification Method:

Antigen affinity purification

Recommended Dilutions:

WB: 1:5000-1:50000

IP: 0.5-4.0 ug for 1.0-3.0 mg of total protein lysate

IHC: 1:50-1:500

IF/ICC: 1:200-1:800

FC (Intra): 0.25 ug per 10⁶ cells in a 100 µl suspension

Applications

Tested Applications:

WB, IHC, IF/ICC, IP, ELISA

Cited Applications:

WB, IHC, IF, IP, CoIP

Species Specificity:

human, mouse, rat

Cited Species:

human, mouse

Note-IHC: suggested antigen retrieval with TE buffer pH 9.0; (*) Alternatively, antigen retrieval may be performed with citrate buffer pH 6.0

Positive Controls:

WB : HEK-293 cells, rat kidney tissue, HeLa cells, Jurkat cells, mouse brain tissue, mouse kidney tissue, U2OS cells, rat brain tissue

IP : mouse brain tissue,

IHC : mouse liver tissue,

IF/ICC : HepG2 cells,

FC (Intra) : HepG2 cells,

Background Information

Notable Publications

Author	Pubmed ID	Journal	Application
Erik McShane	27720452	Cell	WB
Yu Yanyan Y	21468425	Mol Biosyst	WB
Hongyang Shi	35182550	Toxicol Appl Pharmacol	WB

Storage

Storage:

Store at -20°C. Stable for one year after shipment.

Storage Buffer:

PBS with 0.02% sodium azide and 50% glycerol, pH7.3

Aliquoting is unnecessary for -20°C storage

For technical support and original validation data for this product please contact:

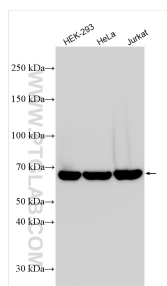
T: 4006900926

E: Proteintech-CN@ptglab.com

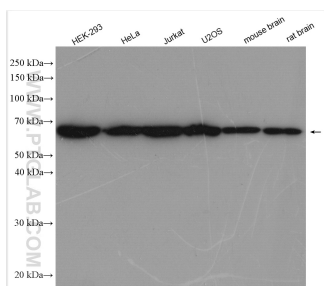
W: ptgcn.com

This product is exclusively available under Proteintech Group brand and is not available to purchase from any other manufacturer.

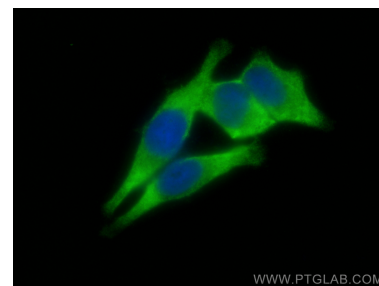
Selected Validation Data



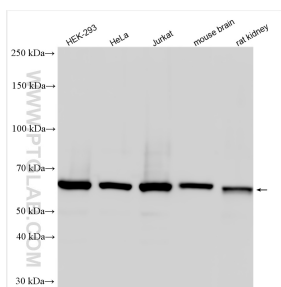
Various lysates were subjected to SDS PAGE followed by western blot with 10571-1-AP (CCT3 antibody) at dilution of 1:20000 incubated at room temperature for 1.5 hours.



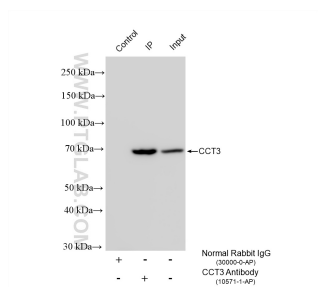
Various lysates were subjected to SDS PAGE followed by western blot with 10571-1-AP (CCT3 antibody) at dilution of 1:800 incubated at room temperature for 1.5 hours.



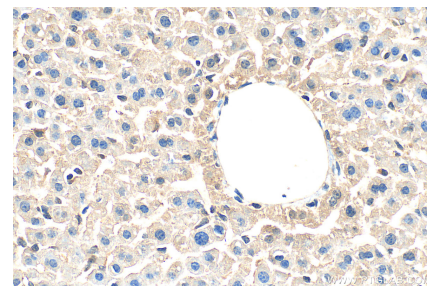
Immunofluorescent analysis of (-20°C Ethanol) fixed HepG2 cells using CCT3 antibody (10571-1-AP) at dilution of 1:400 and Multi-rAb CoraLite® Plus 488-Goat Anti-Rabbit Recombinant Secondary Antibody (H+L) (RGAR002).



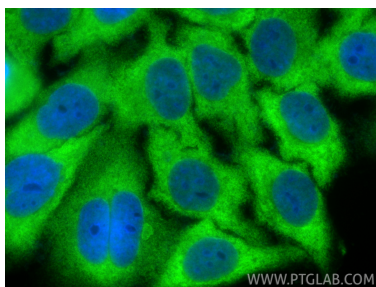
Various lysates were subjected to SDS PAGE followed by western blot with 10571-1-AP (CCT3 antibody) at dilution of 1:12000 incubated at room temperature for 1.5 hours.



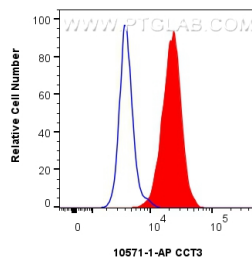
IP result of anti-CCT3 (IP:10571-1-AP, 4ug; Detection:10571-1-AP 1:15000) with mouse brain tissue lysate 1720 ug.



Immunohistochemical analysis of paraffin-embedded mouse liver tissue slide using 10571-1-AP (CCT3 antibody) at dilution of 1:200 (under 40x lens). Heat mediated antigen retrieval with Tris-EDTA buffer (pH 9.0).



Immunofluorescent analysis of (-20°C Ethanol) fixed HepG2 cells using CCT3 antibody (10571-1-AP) at dilution of 1:400 and CoraLite® 488-Conjugated Goat Anti-Rabbit IgG(H+L) (SA00013-2).



1x10⁶ HepG2 cells were intracellularly stained with 0.25 ug CCT3 Polyclonal antibody (10571-1-AP) and CoraLite® 488-Conjugated Goat Anti-Rabbit IgG(H+L) (SA00013-2)(red), or 0.25 ug rabbit IgG isotype control (blue). Cells were fixed with 4% PFA and permeabilized with Flow Cytometry Perm Buffer.