

For Research Use Only

GYS1 Polyclonal antibody

Catalog Number: 10566-1-AP

Featured Product

16 Publications



Basic Information

Catalog Number:

10566-1-AP

Size:

550 µg/ml

Source:

Rabbit

Isotype:

IgG

Immunogen Catalog Number:

AG0857

GenBank Accession Number:

BC007688

GeneID (NCBI):

2997

UNIPROT ID:

P13807

Full Name:

glycogen synthase 1 (muscle)

Calculated MW:

84 kDa

Observed MW:

84 kDa

Purification Method:

Antigen affinity purification

Recommended Dilutions:

WB 1:1000-1:4000

IP 0.5-4.0 µg for 1.0-3.0 mg of total protein lysate

IHC 1:50-1:500

IF 1:50-1:500

Applications

Tested Applications:

FC, IF/ICC, IHC, IP, WB, ELISA

Cited Applications:

WB, IF, IHC

Species Specificity:

human, mouse, rat

Cited Species:

human, rat, mouse

Note-IHC: suggested antigen retrieval with TE buffer pH 9.0; (*) Alternatively, antigen retrieval may be performed with citrate buffer pH 6.0

Positive Controls:

WB: HeLa cells, K-562 cells, Jurkat cells, mouse skeletal muscle tissue, rat heart tissue, rat skeletal muscle tissue

IP: mouse skeletal muscle tissue,

IHC: human liver tissue, human skeletal muscle tissue, human prostate cancer tissue

IF: HepG2 cells,

Background Information

GYS1(Glycogen [starch] synthase, muscle) is the the rate limiting enzyme of the insulin-induced glycogenesis, transferring glucose units from UDP-Glc to a glycogen primer. It catalyzes the linear addition of glucose residues to the branching structure of glycogen, providing a convenient store of glucose for times of metabolic need. This protein has 2 isoforms produced by alternative splicing.

Notable Publications

Author	Pubmed ID	Journal	Application
Teresa W-M Fan	36150727	J Immunol	
Zejian Liu	36063868	Metabolism	WB
Miyuki Doi	36353228	Front Endocrinol (Lausanne)	IHC

Storage

Storage:

Store at -20°C. Stable for one year after shipment.

Storage Buffer:

PBS with 0.02% sodium azide and 50% glycerol pH 7.3.

Aliquoting is unnecessary for -20°C storage

For technical support and original validation data for this product please contact:

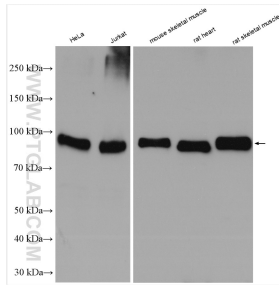
T: 4006900926

E: Proteintech-CN@ptglab.com

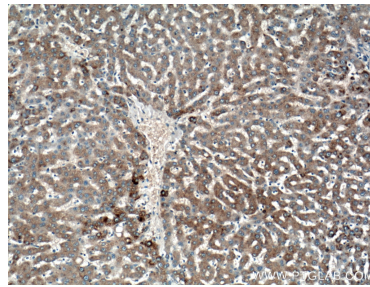
W: ptgcn.com

This product is exclusively available under Proteintech Group brand and is not available to purchase from any other manufacturer.

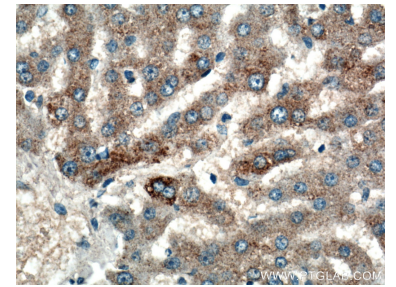
Selected Validation Data



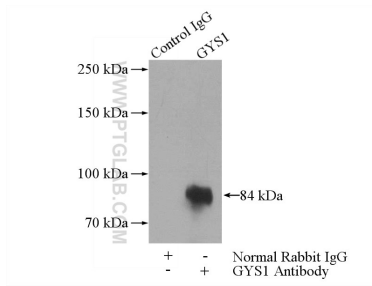
Various lysates were subjected to SDS PAGE followed by western blot with 10566-1-AP (GYS1 antibody) at dilution of 1:2000 incubated at room temperature for 1.5 hours.



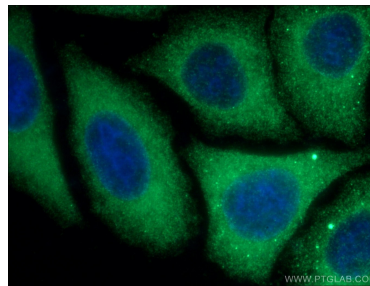
Immunohistochemical analysis of paraffin-embedded human liver tissue slide using 10566-1-AP (GYS1 antibody) at dilution of 1:200 (under 10x lens).



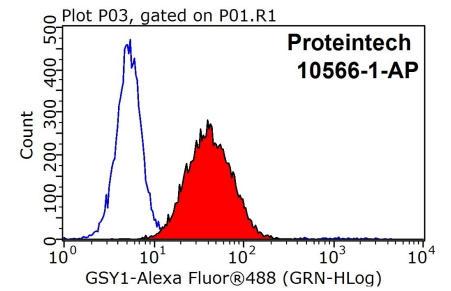
Immunohistochemical analysis of paraffin-embedded human liver tissue slide using 10566-1-AP (GYS1 antibody) at dilution of 1:200 (under 40x lens).



IP result of anti-GYS1 (IP:10566-1-AP, 4ug; Detection:10566-1-AP 1:300) with mouse skeletal muscle tissue lysate 2200ug.



Immunofluorescent analysis of (-20°C Ethanol) fixed HepG2 cells using 10566-1-AP (GYS1 antibody) at dilution of 1:50 and Alexa Fluor 488-conjugated AffiniPure Goat Anti-Rabbit IgG(H+L).



1X10⁶ HepG2 cells were stained with 0.2ug GYS1 antibody (10566-1-AP, red) and control antibody (blue). Fixed with 90% MeOH blocked with 3% BSA (30 min). Alexa Fluor 488-conjugated AffiniPure Goat Anti-Rabbit IgG(H+L) with dilution 1:1000.