

For Research Use Only

# IRF5 Polyclonal antibody

Catalog Number: 10547-1-AP

39 Publications



## Basic Information

### Catalog Number:

10547-1-AP

### Concentration:

400 µg/ml

### Source:

Rabbit

### Isotype:

IgG

### Immunogen Catalog Number:

AG0841

### GenBank Accession Number:

BC004201

### GeneID (NCBI):

3663

### UNIPROT ID:

Q13568

### Full Name:

interferon regulatory factor 5

### Calculated MW:

56 kDa

### Observed MW:

56 kDa

### Purification Method:

Antigen affinity purification

### Recommended Dilutions:

WB 1:2000-1:10000

IP 0.5-4.0 µg for 1.0-3.0 mg of total protein lysate

IHC 1:50-1:500

IF/ICC 1:50-1:500

## Applications

### Tested Applications:

WB, IHC, IF/ICC, IP, ELISA

### Cited Applications:

WB, IHC, IF, IP, ChIP

### Species Specificity:

human, mouse, rat

### Cited Species:

human, mouse, rat, sheep, brovine

**Note-IHC: suggested antigen retrieval with TE buffer pH 9.0; (\*) Alternatively, antigen retrieval may be performed with citrate buffer pH 6.0**

### Positive Controls:

WB : THP-1 cells, SH-SY5Y cells, Jurkat cells

IP : HeLa cells,

IHC : human prostate cancer tissue, human breast cancer tissue

IF/ICC : HepG2 cells,

## Background Information

IRF5, also named as SLEB10, contains one IRF tryptophan pentad repeat DNA-binding domain and belongs to the IRF family. It is a transcription factor involved in the induction of interferons IFNA and IFNB and inflammatory cytokines upon virus infection. It is activated by TLR7 or TLR8 signaling. Genetic variations in IRF5 are associated with susceptibility to inflammatory bowel disease type 14 (IBD14) and systemic lupus erythematosus type 10 (SLEB10). Alternative splice variant encoding different isoforms exist. Catalog#10547-1-AP is a rabbit polyclonal antibody raised against the C-terminal of human IRF5.

## Notable Publications

Author	Pubmed ID	Journal	Application
Stephanie Georgina Dakin	29118051	Br J Sports Med	IF
Deborah Cohen	36331667	Neurochem Res	WB
Hong Lu	31177020	Phytomedicine	WB,IF

## Storage

### Storage:

Store at -20°C. Stable for one year after shipment.

### Storage Buffer:

PBS with 0.02% sodium azide and 50% glycerol pH 7.3.

Aliquoting is unnecessary for -20°C storage

For technical support and original validation data for this product please contact:

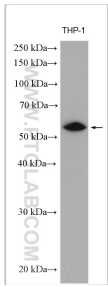
T: 4006900926

E: [Proteintech-CN@ptglab.com](mailto:Proteintech-CN@ptglab.com)

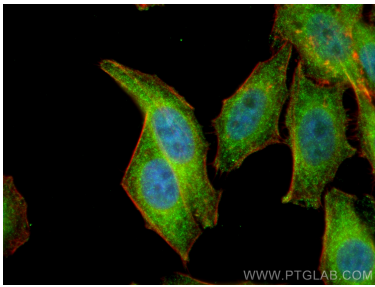
W: [ptgcn.com](http://ptgcn.com)

This product is exclusively available under Proteintech Group brand and is not available to purchase from any other manufacturer.

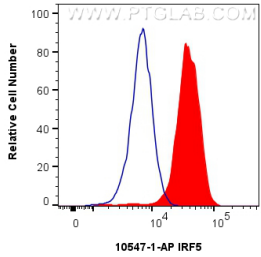
Selected Validation Data



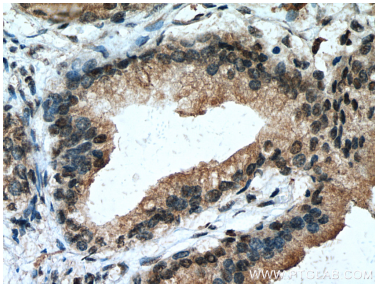
THP-1 cells were subjected to SDS PAGE followed by western blot with 10547-1-AP (IRF5 antibody) at dilution of 1:5000 incubated at room temperature for 1.5 hours.



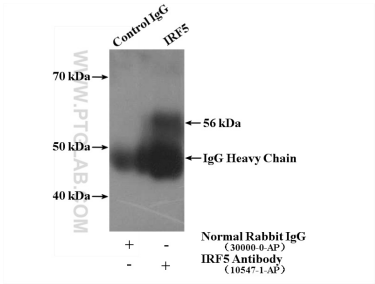
Immunofluorescent analysis of (4% PFA) fixed HepG2 cells using IRF5 antibody (10547-1-AP) at dilution of 1:200 and CoraLite®488-Conjugated Goat Anti-Rabbit IgG(H+L), CL594-Phalloidin (red).



1x10<sup>6</sup> THP-1 cells were intracellularly stained with 0.25 ug IRF5 Polyclonal antibody (10547-1-AP) and CoraLite®488-Conjugated Goat Anti-Rabbit IgG(H+L) (SA00013-2)(red), or 0.25 ug Rabbit IgG Isotype Control RecAb (98136-1-RR, Clone: 240953C9) (blue). Cells were fixed with 4% PFA and permeabilized with Flow Cytometry Perm Buffer (PF00011-C).



Immunohistochemical analysis of paraffin-embedded human prostate cancer tissue slide using 10547-1-AP (IRF5 antibody) at dilution of 1:200 (under 40x lens). Heat mediated antigen retrieval with Tris-EDTA buffer (pH 9.0).



IP result of anti-IRF5 (IP:10547-1-AP, 4ug; Detection:10547-1-AP 1:300) with HeLa cells lysate 1600ug.