

For Research Use Only

# Calpain 1 Polyclonal antibody

Catalog Number: 10538-1-AP

Featured Product

43 Publications



## Basic Information

Catalog Number:

10538-1-AP

Source:

Rabbit

Isotype:

IgG

Immunogen Catalog Number:

AG0810

GenBank Accession Number:

BC008751

GeneID (NCBI):

823

UNIPROT ID:

P07384

Full Name:

calpain 1, (mu/l) large subunit

Calculated MW:

704 aa, 82 kDa

Observed MW:

75 kDa

Purification Method:

Antigen affinity purification

Recommended Dilutions:

WB: 1:5000-1:50000

IP: 0.5-4.0 ug for 1.0-3.0 mg of total protein lysate

IHC: 1:50-1:500

IF/ICC: 1:50-1:500

FC (Intra): 0.40 ug per 10<sup>6</sup> cells in a 100 µl suspension

## Applications

Tested Applications:

WB, IHC, IF/ICC, FC (Intra), IP, ELISA

Cited Applications:

WB, IHC, IF, CoIP

Species Specificity:

human, mouse, rat

Cited Species:

human, mouse, rat, rabbit, chicken

**Note-IHC: suggested antigen retrieval with TE buffer pH 9.0; (\*) Alternatively, antigen retrieval may be performed with citrate buffer pH 6.0**

Positive Controls:

**WB** : HeLa cells, A2780 cells, A431 cells, mouse testis tissue, HepG2 cells, PC-3 cells, K-562 cells, Jurkat cells

**IP** : HeLa cells,

**IHC** : human urothelial carcinoma tissue, human heart tissue, human testis tissue

**IF/ICC** : HeLa cells,

**FC (Intra)** : HeLa cells,

## Background Information

### Notable Publications

Author	Pubmed ID	Journal	Application
Shuchao Wang	30240910	Ann Anat	WB,IF
Folnetti A Alvarez	36114323	Breast Cancer Res Treat	WB
Feng Gao	36341808	Neuropharmacology	WB

## Storage

Storage:

Store at -20°C. Stable for one year after shipment.

Storage Buffer:

PBS with 0.02% sodium azide and 50% glycerol, pH7.3

Aliquoting is unnecessary for -20°C storage

For technical support and original validation data for this product please contact:

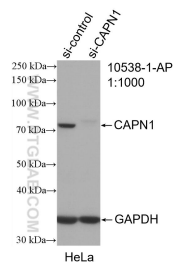
T: 4006900926

E: [Proteintech-CN@ptglab.com](mailto:Proteintech-CN@ptglab.com)

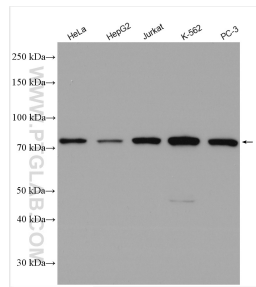
W: [ptgcn.com](http://ptgcn.com)

**This product is exclusively available under Proteintech Group brand and is not available to purchase from any other manufacturer.**

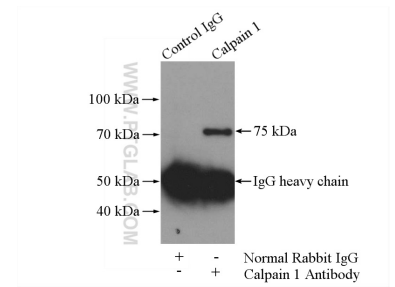
## Selected Validation Data



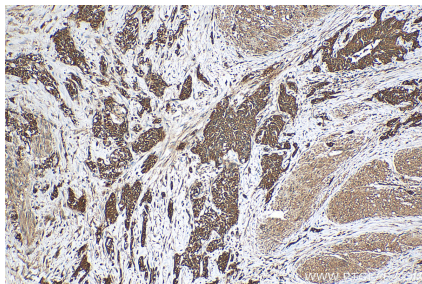
WB result of Calpain 1 antibody (10538-1-AP; 1:1000; incubated at room temperature for 1.5 hours) with sh-Control and sh-Calpain 1 transfected HeLa cells.



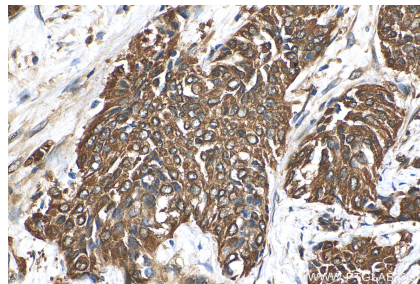
Various lysates were subjected to SDS PAGE followed by western blot with 10538-1-AP (Calpain 1 antibody) at dilution of 1:15000 incubated at room temperature for 1.5 hours.



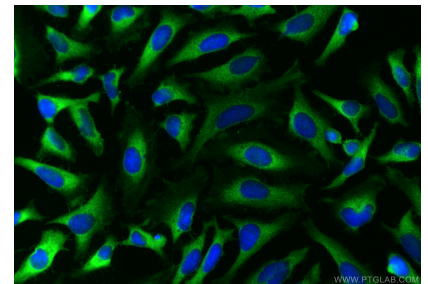
IP result of anti-Calpain 1 (IP:10538-1-AP, 4ug; Detection:10538-1-AP 1:1000) with HeLa cells lysate 1200ug.



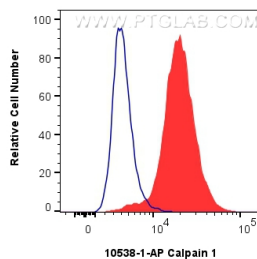
Immunohistochemical analysis of paraffin-embedded human urothelial carcinoma tissue slide using 10538-1-AP (Calpain 1 antibody) at dilution of 1:200 (under 10x lens). Heat mediated antigen retrieval with Tris-EDTA buffer (pH 9.0).



Immunohistochemical analysis of paraffin-embedded human urothelial carcinoma tissue slide using 10538-1-AP (Calpain 1 antibody) at dilution of 1:200 (under 40x lens). Heat mediated antigen retrieval with Tris-EDTA buffer (pH 9.0).



Immunofluorescent analysis of (-20°C Methanol) fixed HeLa cells using Calpain 1 antibody (10538-1-AP) at dilution of 1:200 and Multi-rAb CoraLite® Plus 488-Goat Anti-Rabbit Recombinant Secondary Antibody (H+L) (RGAR002).



1x10<sup>6</sup> HeLa cells were intracellularly stained with 0.4 ug Calpain 1 Polyclonal antibody (10538-1-AP) and CoraLite®488-Conjugated AffiniPure Goat Anti-Rabbit IgG(H+L) (SA00013-2)(red), or 0.4 ug rabbit IgG isotype control (blue). Cells were fixed with 4% PFA and permeabilized with Flow Cytometry Perm Buffer.