

NRG1, isoform SMDF Polyclonal antibody

Catalog Number: 10527-1-AP

13 Publications

Basic Information

Catalog Number:

10527-1-AP

Concentration:

800 ug/ml

Source:

Rabbit

Isotype:

IgG

Immunogen Catalog Number:

AG0803

GenBank Accession Number:

BC007675

GeneID (NCBI):

3084

UNIPROT ID:

Q02297

Full Name:

neuregulin 1

Calculated MW:

70 kDa

Observed MW:

70 kDa

Purification Method:

Antigen affinity purification

Recommended Dilutions:

WB 1:500-1:2000

IHC 1:50-1:500

IF-P 1:50-1:500

IF/ICC 1:200-1:800

Applications

Tested Applications:

WB, IHC, IF/ICC, IF-P, ELISA

Cited Applications:

WB, IHC, IF

Species Specificity:

human, mouse, rat

Cited Species:

human, mouse, rat

Note-IHC: suggested antigen retrieval with TE buffer pH 9.0; (*) Alternatively, antigen retrieval may be performed with citrate buffer pH 6.0

Positive Controls:

WB: MCF-7 cells, SH-SY5Y cells, mouse brain tissue, rat brain tissue

IHC: mouse stomach tissue, human stomach tissue, mouse cerebellum tissue

IF-P: mouse brain tissue,

IF/ICC: MCF-7 cells,

Background Information

Neuregulin 1 (NRG1) is a trophic factor that has been implicated in neural development, neurotransmission, and synaptic plasticity. NRG1 has multiple isoforms that are generated by usage of different promoters and alternative splicing of a single gene. NRG1 and its receptor ErbB tyrosine kinase are expressed not only in the developing nervous system, but also in the adult brain. Studies has been reported, the full-length type III NRG1 (NRG1 isoform SMDF) is more than 110 kDa, the 70-75 kDa band is a membrane bound form and it can be cleaved by an unknown enzyme releases the 45 kDa secreted form of NRG1 (PMID: 21047912, PMID: 11425901). The immunogen of this antibody is against NRG1 isoform SMDF.

Notable Publications

Author	Pubmed ID	Journal	Application
Xiaobao Gong	36218239	Phytother Res	WB
Dong-Min Shi	30486894	J Exp Clin Cancer Res	IHC
Dongmin Yu	35716406	Ecotoxicol Environ Saf	WB,IHC,IF

Storage

Storage:

Store at -20°C. Stable for one year after shipment.

Storage Buffer:

PBS with 0.02% sodium azide and 50% glycerol pH 7.3.

Aliquoting is unnecessary for -20°C storage

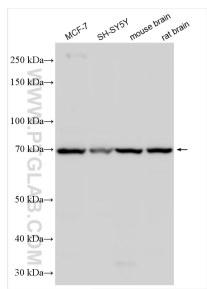
For technical support and original validation data for this product please contact:

T: 4006900926

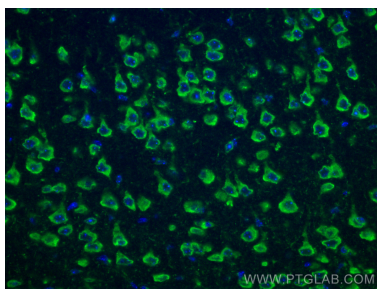
E: Proteintech-CN@ptglab.comW: ptgcn.com

This product is exclusively available under Proteintech Group brand and is not available to purchase from any other manufacturer.

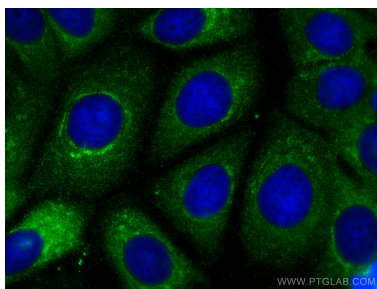
Selected Validation Data



Various lysates were subjected to SDS PAGE followed by western blot with 10527-1-AP (NRG1, isoform SMDF antibody) at dilution of 1:1000 incubated at room temperature for 1.5 hours.



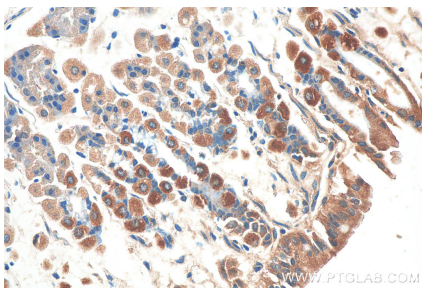
Immunofluorescent analysis of (4% PFA) fixed paraffin-embedded mouse brain tissue using NRG1, isoform SMDF antibody (10527-1-AP) at dilution of 1:200 and CoraLite®488-Conjugated Goat Anti-Rabbit IgG(H+L) (SA00013-2). Heat mediated antigen retrieval with Tris-EDTA buffer (pH 9.0).



Immunofluorescent analysis of (-20°C Methanol) fixed MCF-7 cells using NRG1, isoform SMDF antibody (10527-1-AP) at dilution of 1:400 and CoraLite®488-Conjugated AffiniPure Goat Anti-Rabbit IgG(H+L).



Immunohistochemical analysis of paraffin-embedded mouse stomach tissue slide using 10527-1-AP (NRG1, isoform SMDF antibody) at dilution of 1:200 (under 10x lens). Heat mediated antigen retrieval with Tris-EDTA buffer (pH 9.0).



Immunohistochemical analysis of paraffin-embedded mouse stomach tissue slide using 10527-1-AP (NRG1, isoform SMDF antibody) at dilution of 1:200 (under 40x lens). Heat mediated antigen retrieval with Tris-EDTA buffer (pH 9.0).