

For Research Use Only

MCM2 Polyclonal antibody, PBS Only

Catalog Number: 10513-1-PBS

Featured Product



Basic Information

Catalog Number:

10513-1-PBS

Source:

Rabbit

Isotype:

IgG

Immunogen Catalog Number:

AG0798

GenBank Accession Number:

BC007670

GeneID (NCBI):

4171

UNIPROT ID:

P49736

Full Name:

minichromosome maintenance complex component 2

Calculated MW:

102 kDa

Observed MW:

116-125 kDa

Purification Method:

Antigen affinity purification

Applications

Tested Applications:

WB, IHC, FC (Intra), IP, Indirect ELISA

Species Specificity:

human, mouse

Background Information

The MCM2-7 complex forms the core of the replicative helicase which acts as the molecular motor that uses ATP binding and hydrolysis to fuel the unwinding of double-stranded DNA at the replication fork in eukaryotes. This complex is the putative replicative helicase essential for 'once per cell cycle' DNA replication initiation and elongation in eukaryotic cells. MCM2, also named CDCL1 and BM28, is a human nuclear protein that plays an important role in 2 crucial steps of the cell cycle, namely, onset of DNA replication and cell division.

Storage

Storage:

Store at -80°C.

The product is shipped with ice packs. Upon receipt, store it immediately at -80°C

Storage Buffer:

PBS only, pH7.3

For technical support and original validation data for this product please contact:

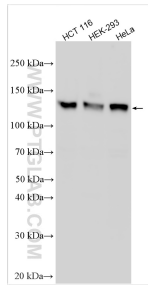
T: 4006900926

E: Proteintech-CN@ptglab.com

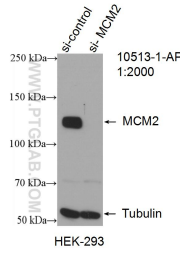
W: ptgcn.com

This product is exclusively available under Proteintech Group brand and is not available to purchase from any other manufacturer.

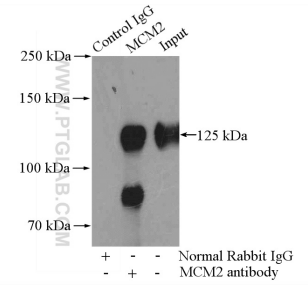
Selected Validation Data



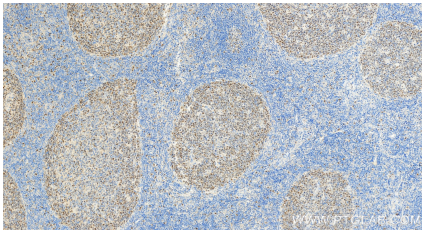
Various lysates were subjected to SDS PAGE followed by western blot with 10513-1-AP (MCM2 antibody) at dilution of 1:4000 incubated at room temperature for 1.5 hours. This data was developed using the same antibody clone with 10513-1-PBS in a different storage buffer formulation.



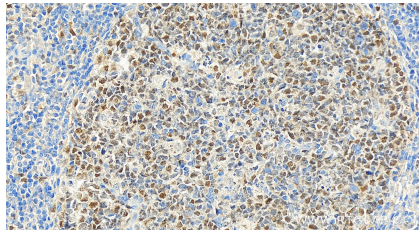
WB result of MCM2 antibody (10513-1-AP; 1:2000; incubated at room temperature for 1.5 hours) with sh-Control and sh-MCM2 transfected HEK-293 cells. This data was developed using the same antibody clone with 10513-1-PBS in a different storage buffer formulation.



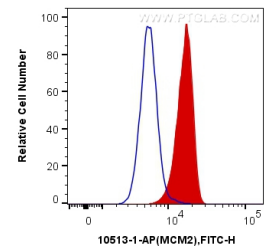
IP result of anti-MCM2 (IP:10513-1-AP, 4ug; Detection:10513-1-AP 1:800) with HEK-293 cells lysate 2800ug. This data was developed using the same antibody clone with 10513-1-PBS in a different storage buffer formulation.



Immunohistochemical analysis of paraffin-embedded human tonsillitis tissue slide using 10513-1-AP (MCM2 antibody) at dilution of 1:2000 (under 20x lens). Heat mediated antigen retrieval with Tris-EDTA buffer (pH 9.0). This data was developed using the same antibody clone with 10513-1-PBS in a different storage buffer formulation.



Immunohistochemical analysis of paraffin-embedded human tonsillitis tissue slide using 10513-1-AP (MCM2 antibody) at dilution of 1:2000 (under 20x lens). Heat mediated antigen retrieval with Tris-EDTA buffer (pH 9.0). This data was developed using the same antibody clone with 10513-1-PBS in a different storage buffer formulation.



1×10^6 NIH/3T3 cells were intracellularly stained with 0.2 ug Anti-Human MCM2 (10513-1-AP) and CoraLite®488-Conjugated AffiniPure Goat Anti-Rabbit IgG(H+L) at dilution 1:1000 (red), or 0.2 ug Control Antibody. Cells were fixed and permeabilized with Transcription Factor Staining Buffer Kit (PF00011). This data was developed using the same antibody clone with 10513-1-PBS in a different storage buffer formulation.