

RhoGDI Polyclonal antibody

Catalog Number: 10509-1-Ig

Featured Product

11 Publications

Basic Information

Catalog Number:

10509-1-Ig

Size:

2000 µg/ml

Source:

Rabbit

Isotype:

IgG

Immunogen Catalog Number:

AG0791

GenBank Accession Number:

BC005851

GeneID (NCBI):

396

UNIPROT ID:

P52565

Full Name:

Rho GDP dissociation inhibitor (GDI)

alpha

Calculated MW:

28 kDa

Observed MW:

28 kDa

Purification Method:

Protein A purification

Recommended Dilutions:

WB 1:500-1:2000

IHC 1:20-1:200

Applications

Tested Applications:

IHC, WB, ELISA

Cited Applications:

WB, IHC

Species Specificity:

human, mouse

Cited Species:

human, rat, mouse

Note-IHC: suggested antigen retrieval with TE buffer pH 9.0; (*) Alternatively, antigen retrieval may be performed with citrate buffer pH 6.0

Positive Controls:

WB: Jurkat cells, A431 cells, mouse pancreas tissue, HL-60 cells, HeLa cells, HEK-293 cells

IHC: human breast cancer tissue, human colon cancer tissue

Background Information

Rho GDP-dissociation inhibitor (RhoGDI), also called ARHGDI, is one member of ARHGDI, which is ubiquitously expressed and interacts with several Rho GTPases, mainly including RhoA, Rac1, and Cdc42. RhoGDI can inhibit nucleotide exchange and membrane association to downregulate the activities of Rho family GTPase. It is overexpressed in various human cancers. Activity of this protein is important in a variety of cellular processes, and it is overexpressed in various human cancers. Mutations in RhoGDI have been found in individuals with nephrotic syndrome, type 8.

Notable Publications

| Author | Pubmed ID | Journal | Application |
|-------------|-----------|-----------------------|-------------|
| Wang Jing J | 23028951 | PLoS One | WB, IHC |
| Yu Lian | 30326930 | J Exp Clin Cancer Res | WB |
| Cheng Liu | 25397718 | J Agric Food Chem | WB |

Storage

Storage:

Store at -20°C. Stable for one year after shipment.

Storage Buffer:

PBS with 0.02% sodium azide and 50% glycerol pH 7.3.

Aliquoting is unnecessary for -20°C storage

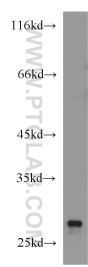
For technical support and original validation data for this product please contact:

T: 4006900926

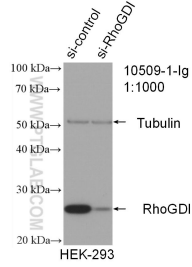
E: Proteintech-CN@ptglab.comW: ptgcn.com

This product is exclusively available under Proteintech Group brand and is not available to purchase from any other manufacturer.

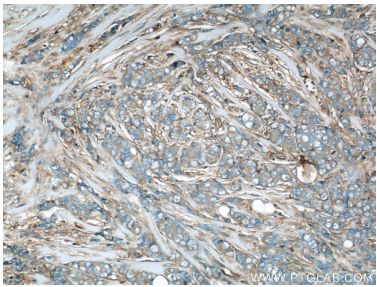
Selected Validation Data



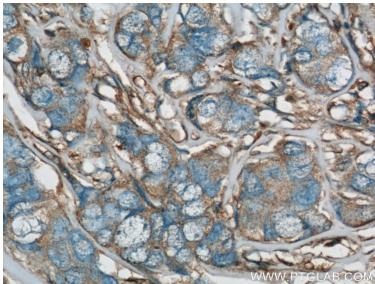
Jurkat cells were subjected to SDS PAGE followed by western blot with 10509-1-Ig (RhoGDI antibody) at dilution of 1:1000 incubated at room temperature for 1.5 hours.



WB result of RhoGDI antibody (10509-1-Ig: 1:1000; incubated at room temperature for 1.5 hours) with sh-Control and sh-RhoGDI transfected HEK-293 cells.



Immunohistochemical analysis of paraffin-embedded human breast cancer using 10509-1-Ig(RhoGDI antibody) at dilution of 1:50 (under 10x lens).



Immunohistochemical analysis of paraffin-embedded human breast cancer using 10509-1-Ig(RhoGDI antibody) at dilution of 1:50 (under 40x lens).