

For Research Use Only

CHMP2A Polyclonal antibody

Catalog Number: 10477-1-AP

Featured Product

50 Publications



Basic Information

Catalog Number:

10477-1-AP

Size:

650 µg/ml

Source:

Rabbit

Isotype:

IgG

Immunogen Catalog Number:

AG0719

GenBank Accession Number:

BC002502

GeneID (NCBI):

27243

UNIPROT ID:

O43633

Full Name:

chromatin modifying protein 2A

Calculated MW:

25 kDa

Observed MW:

32 kDa

Purification Method:

Antigen affinity purification

Recommended Dilutions:

WB 1:500-1:1000

IHC 1:50-1:500

Applications

Tested Applications:

WB, IHC, ELISA

Cited Applications:

WB, IF, IP

Species Specificity:

human

Cited Species:

human, mouse, rat

Note-IHC: suggested antigen retrieval with TE buffer pH 9.0; (*) Alternatively, antigen retrieval may be performed with citrate buffer pH 6.0

Positive Controls:

WB : HepG2 cells, HEK-293 cells, HeLa cells

IHC : human liver cancer tissue,

Background Information

CHMP2A, also known as Vps2-1, belongs to the chromatin-modifying protein/charged multivesicular body protein (CHMP) family. CHMP2A is a component of ESCRT-III (endosomal sorting complex required for transport III), a complex involved in the degradation of surface receptor proteins and the formation of endocytic multivesicular bodies (MVBs). It has been shown that CHMP2A can interact with and regulate the function of the AAA-ATPase VPS4B (PMID: 15173323). CHMP2A is also reported to be involved in HIV budding (PMID: 21396898; 23051622).

Notable Publications

Author	Pubmed ID	Journal	Application
Shiwei Liu	30232450	Nature	IF
Bhaskar Saha	33052966	PLoS Pathog	
Maja Radulovic	30314966	EMBO J	IF

Storage

Storage:

Store at -20°C. Stable for one year after shipment.

Storage Buffer:

PBS with 0.02% sodium azide and 50% glycerol pH 7.3.

Aliquoting is unnecessary for -20°C storage

For technical support and original validation data for this product please contact:

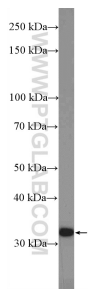
T: 4006900926

E: Proteintech-CN@ptglab.com

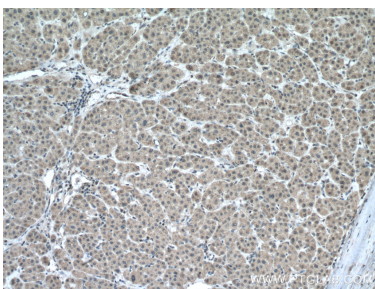
W: ptgcn.com

This product is exclusively available under Proteintech Group brand and is not available to purchase from any other manufacturer.

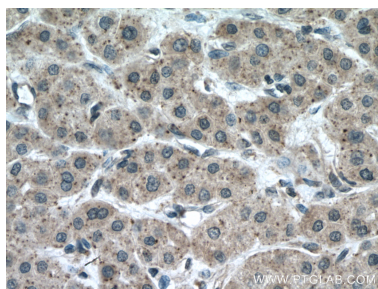
Selected Validation Data



HepG2 cells were subjected to SDS PAGE followed by western blot with 10477-1-AP (CHMP2A Antibody) at dilution of 1:600 incubated at room temperature for 1.5 hours.



Immunohistochemical analysis of paraffin-embedded human liver cancer tissue slide using 10477-1-AP (CHMP2A antibody) at dilution of 1:200 (under 10x lens. Heat mediated antigen retrieval with Tris-EDTA buffer (pH 9.0).



Immunohistochemical analysis of paraffin-embedded human liver cancer tissue slide using 10477-1-AP (CHMP2A antibody) at dilution of 1:200 (under 40x lens. Heat mediated antigen retrieval with Tris-EDTA buffer (pH 9.0).