

For Research Use Only

TCL1A Polyclonal antibody

Catalog Number: 10475-1-AP

1 Publications



Basic Information

Catalog Number:

10475-1-AP

Size:

700 ug/ml

Source:

Rabbit

Isotype:

IgG

Immunogen Catalog Number:

AG0786

GenBank Accession Number:

BC005831

GeneID (NCBI):

8115

UNIPROT ID:

P56279

Full Name:

T-cell leukemia/lymphoma 1A

Calculated MW:

13 kDa

Observed MW:

14-16 kDa

Purification Method:

Antigen affinity purification

Recommended Dilutions:

WB 1:200-1:1000

IHC 1:500-1:2000

Applications

Tested Applications:

WB, IHC, ELISA

Cited Applications:

WB

Species Specificity:

human

Cited Species:

human

Note-IHC: suggested antigen retrieval with TE buffer pH 9.0; (*) Alternatively, antigen retrieval may be performed with citrate buffer pH 6.0

Positive Controls:

WB : Raji cells,

IHC : human tonsillitis tissue, human lung cancer tissue

Background Information

TCL1A, also named as TCL1 and p14 TCL1, enhances cell proliferation, stabilizes mitochondrial membrane potential and promotes cell survival. TCL1A immunodetection is an independent marker of adverse outcome that could be used in routine settings for the management of DLCL patients. TCL1A expression is correlated with shorter time to treatment in chronic lymphocytic leukemia cases and shorter lymphoma-specific survival in mantle cell lymphoma series. It is a potential therapeutic target.

Notable Publications

Author	Pubmed ID	Journal	Application
Qun E	26289388	Cell Biol Int	WB

Storage

Storage:

Store at -20°C. Stable for one year after shipment.

Storage Buffer:

PBS with 0.02% sodium azide and 50% glycerol pH 7.3.

Aliquoting is unnecessary for -20°C storage

For technical support and original validation data for this product please contact:

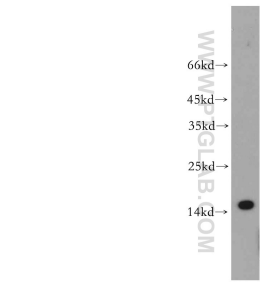
T: 4006900926

E: Proteintech-CN@ptglab.com

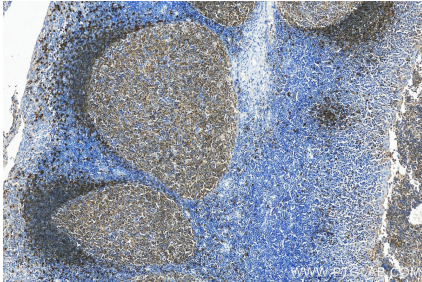
W: ptgcn.com

This product is exclusively available under Proteintech Group brand and is not available to purchase from any other manufacturer.

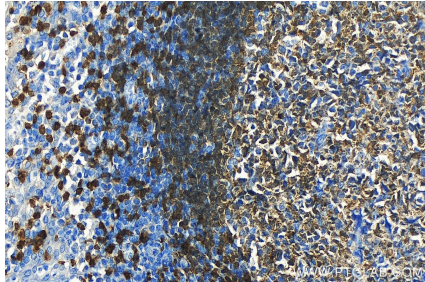
Selected Validation Data



Raji cells were subjected to SDS PAGE followed by western blot with 10475-1-AP (TCL1A antibody) at dilution of 1:300 incubated at room temperature for 1.5 hours.



Immunohistochemical analysis of paraffin-embedded human tonsillitis tissue slide using 10475-1-AP (TCL1A antibody) at dilution of 1:1000 (under 20x lens). Heat mediated antigen retrieval with Tris-EDTA buffer (pH 9.0).



Immunohistochemical analysis of paraffin-embedded human tonsillitis tissue slide using 10475-1-AP (TCL1A antibody) at dilution of 1:1000 (under 20x lens). Heat mediated antigen retrieval with Tris-EDTA buffer (pH 9.0).