

For Research Use Only

CLINT1 Polyclonal antibody

Catalog Number: 10470-1-AP **1 Publications**



Basic Information

Catalog Number: 10470-1-AP	GenBank Accession Number: BC004467	Purification Method: Antigen affinity purification
Size: 600 µg/ml	GeneID (NCBI): 9685	Recommended Dilutions: WB 1:500-1:2000
Source: Rabbit	UNIPROT ID: Q14677	IP 0.5-4.0 µg for 1.0-3.0 mg of total protein lysate
Isotype: IgG	Full Name: clathrin interactor 1	IHC 1:50-1:500
Immunogen Catalog Number: AG0754	Calculated MW: 68 kDa	IF 1:10-1:100
	Observed MW: 68 kDa, 80 kDa	

Applications

Tested Applications: FC, IF/ICC, IHC, IP, WB, ELISA	Positive Controls: WB : HeLa cells, HEK-293 cells, HepG2 cells, mouse brain tissue
Cited Applications: WB	IP : HeLa cells,
Species Specificity: human, mouse, rat	IHC : human breast cancer tissue,
Cited Species: human	IF : HepG2 cells,
Note-IHC: suggested antigen retrieval with TE buffer pH 9.0; (*) Alternatively, antigen retrieval may be performed with citrate buffer pH 6.0	

Background Information

Clathrin interactor 1 (CLINT1), also known as enthoprotin or epsin-4, belongs to the epsin family of endocytic adapter proteins. CLINT1 interacts with clathrin, the adapter protein AP-1 and phosphoinositides. It may have a role in the formation of clathrin coated vesicles and trafficking between the trans-Golgi network and endosomes. Mutations in the gene of CLINT1 are associated with a susceptibility to schizophrenia and psychotic disorders. Calculated molecular weight of CLINT1 is 68 kDa. The migration of endogenous CLINT1 at 80 kDa has also been reported (PMID: 12213833; 15811338).

Notable Publications

Author	Pubmed ID	Journal	Application
Orhi Barroso-Gomila	37996419	Nat Commun	WB

Storage

Storage:
Store at -20°C. Stable for one year after shipment.
Storage Buffer:
PBS with 0.02% sodium azide and 50% glycerol pH 7.3.
Aliquoting is unnecessary for -20°C storage

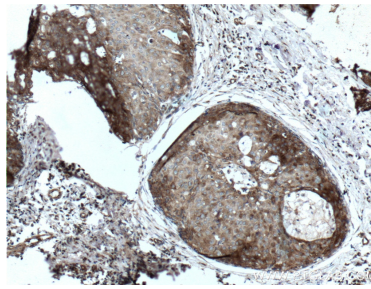
For technical support and original validation data for this product please contact:
T: 4006900926 E: Proteintech-CN@ptglab.com W: ptgcn.com

This product is exclusively available under Proteintech Group brand and is not available to purchase from any other manufacturer.

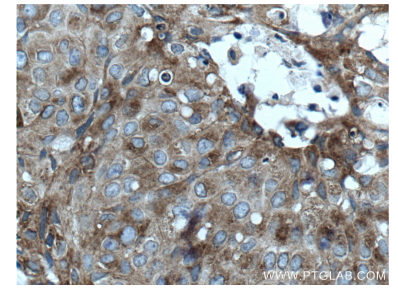
Selected Validation Data



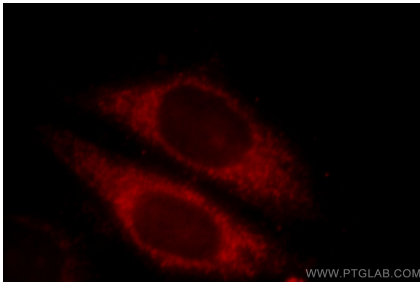
HeLa cells were subjected to SDS PAGE followed by western blot with 10470-1-AP (CLINT1 antibody) at dilution of 1:1000 incubated at room temperature for 1.5 hours.



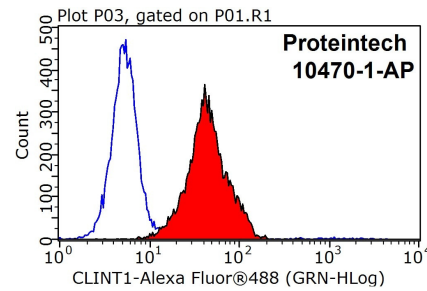
Immunohistochemical analysis of paraffin-embedded human breast cancer tissue slide using 10470-1-AP (CLINT1 Antibody) at dilution of 1:200 (under 10x lens). Heat mediated antigen retrieval with Tris-EDTA buffer (pH 9.0).



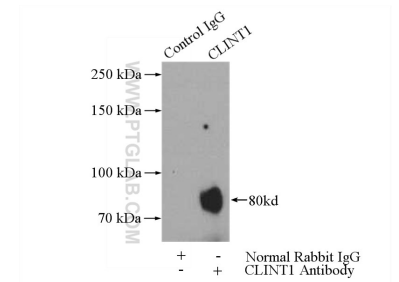
Immunohistochemical analysis of paraffin-embedded human breast cancer tissue slide using 10470-1-AP (CLINT1 Antibody) at dilution of 1:200 (under 40x lens). Heat mediated antigen retrieval with Tris-EDTA buffer (pH 9.0).



Immunofluorescent analysis of HepG2 cells, using CLINT1 antibody 10470-1-AP at 1:25 dilution and Rhodamine-labeled goat anti-rabbit IgG (red).



1x10⁶ HepG2 cells were stained with 0.2ug CLINT1 antibody (10470-1-AP, red) and control antibody (blue). Fixed with 90% MeOH blocked with 3% BSA (30 min). Alexa Fluor 488-conjugated AffiniPure Goat Anti-Rabbit IgG(H+L) with dilution 1:1000.



IP result of anti-CLINT1 (IP:10470-1-AP, 4ug; Detection:10470-1-AP 1:1000) with HeLa cells lysate 2800ug.