

For Research Use Only

# Connexin-32 Polyclonal antibody

Catalog Number: 10450-1-AP

7 Publications



## Basic Information

### Catalog Number:

10450-1-AP

### Size:

133 ug/ml

### Source:

Rabbit

### Isotype:

IgG

### Immunogen Catalog Number:

AG0659

### GenBank Accession Number:

BC002805

### GeneID (NCBI):

2705

### UNIPROT ID:

P08034

### Full Name:

gap junction protein, beta 1, 32kDa

### Calculated MW:

32 kDa

### Observed MW:

32 kDa

### Purification Method:

Antigen affinity purification

### Recommended Dilutions:

WB 1:200-1:1000

IP 0.5-4.0 ug for 1.0-3.0 mg of total protein lysate

IHC 1:50-1:500

## Applications

### Tested Applications:

IHC, IP, WB, ELISA

### Cited Applications:

WB, IHC, IF

### Species Specificity:

human, mouse

### Cited Species:

human, mouse

### Positive Controls:

**WB** : mouse brain tissue, A375 cells, human liver tissue, mouse skin tissue

**IP** : mouse brain tissue,

**IHC** : human liver cancer tissue, human colon cancer tissue

**Note-IHC: suggested antigen retrieval with TE buffer pH 9.0; (\*) Alternatively, antigen retrieval may be performed with citrate buffer pH 6.0**

## Background Information

Connexin-32 (Cx32), also known as Gap junction beta 1 protein (GJB1), belongs to the connexin family. Connexins are membrane-spanning proteins that assemble to form gap junction channels that facilitate the transfer of ions and small molecules between cells. Connexin-32 is the major gap junction protein of liver, and the expression is also found in the brain and other organs. It is involved in tumorigenesis and liver regeneration. Connexin-32 plays an important role in peripheral nerve. Defects in Connexin-32 are the cause of Charcot-Marie-Tooth disease X-linked type 1 (CMTX1), an inherited peripheral neuropathy. Cx32 protein can be detected as a 27-32 kDa monomer and a 48-54 kDa dimer (PMID: 8266101; 8613761; 8608591; 19265674; 17972320; 19845480)

## Notable Publications

Author	Pubmed ID	Journal	Application
Nakase Taizen T	19794823	J Biomed Biotechnol	IHC
Wen-Qun Zhong	25270527	Histopathology	IHC, IF
Yi Sha S	23162640	Oncol Lett	WB

## Storage

### Storage:

Store at -20°C. Stable for one year after shipment.

### Storage Buffer:

PBS with 0.02% sodium azide and 50% glycerol pH 7.3.

Aliquoting is unnecessary for -20°C storage

For technical support and original validation data for this product please contact:

T: 4006900926

E: [Proteintech-CN@ptglab.com](mailto:Proteintech-CN@ptglab.com)

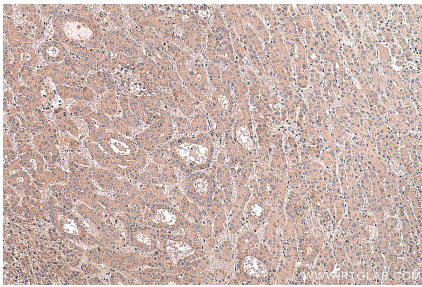
W: [ptgcn.com](http://ptgcn.com)

**This product is exclusively available under Proteintech Group brand and is not available to purchase from any other manufacturer.**

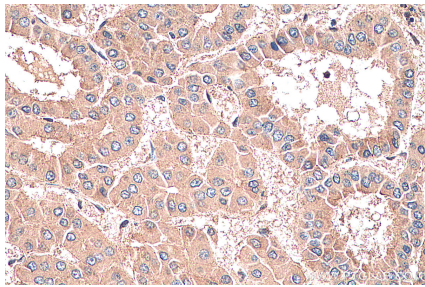
Selected Validation Data



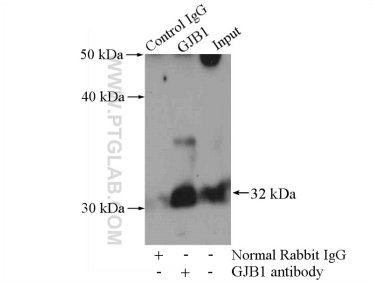
mouse brain tissue were subjected to SDS PAGE followed by western blot with 10450-1-AP (GJB1 antibody) at dilution of 1:300 incubated at room temperature for 1.5 hours.



Immunohistochemical analysis of paraffin-embedded human liver cancer tissue slide using 10450-1-AP (Connexin-32 antibody) at dilution of 1:200 (under 10x lens). Heat mediated antigen retrieval with Tris-EDTA buffer (pH 9.0).



Immunohistochemical analysis of paraffin-embedded human liver cancer tissue slide using 10450-1-AP (Connexin-32 antibody) at dilution of 1:200 (under 40x lens). Heat mediated antigen retrieval with Tris-EDTA buffer (pH 9.0).



IP result of anti-Connexin-32 (IP:10450-1-AP, 4ug; Detection:10450-1-AP 1:300) with mouse brain tissue lysate 4000ug.