

For Research Use Only

# EIF3J Polyclonal antibody, PBS Only

Catalog Number:10439-1-PBS

Featured Product



## Basic Information

Catalog Number:

10439-1-PBS

Size:

1 mg/ml

Source:

Rabbit

Isotype:

IgG

Immunogen Catalog Number:

AG0678

GenBank Accession Number:

BC002719

GeneID (NCBI):

8669

UNIPROT ID:

O75822

Full Name:

eukaryotic translation initiation factor 3, subunit J

Calculated MW:

28 kDa

Observed MW:

35 kDa

Purification Method:

Antigen affinity purification

## Applications

Tested Applications:

WB, IHC, IF/ICC, IP, Indirect ELISA

Species Specificity:

human

## Background Information

EIF3 has a key role in binding of initiator methionyl-tRNA and mRNA to the 40S ribosomal subunit to form the 40S initiation complex (PMID:17588516). The eIF3 complex stimulates several steps in the translation initiation pathway, including dissociation of 80S ribosomes into 40S and 60S subunits, binding of a ternary complex (TC) consisting of Met-tRNA, eIF2, and GTP to the small subunit (forming the 43S preinitiation complex) and recruitment of mRNA to the 43S complex to produce the 48S complex (PMID:11560931). EIF3J was identified as a high copy suppressor of the temperature-sensitive (Ts-) phenotype of the rpg1-1 allele of TIF32/RPG1, encoding the largest subunit of yeast eIF3 (eIF3a) (PMID:10488093).

## Storage

Storage:

Store at -80°C.

The product is shipped with ice packs. Upon receipt, store it immediately at -80°C

Storage Buffer:

PBS Only

For technical support and original validation data for this product please contact:

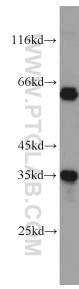
T: 4006900926

E: Proteintech-CN@ptglab.com

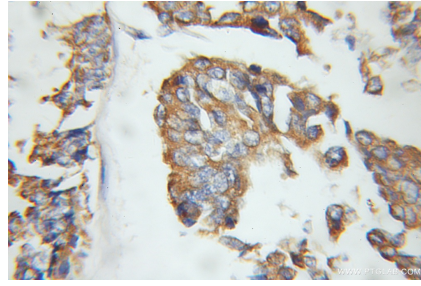
W: ptgcn.com

This product is exclusively available under Proteintech Group brand and is not available to purchase from any other manufacturer.

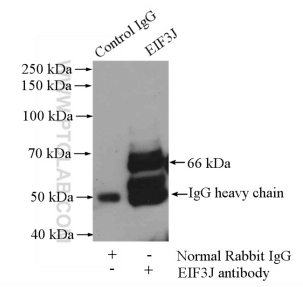
## Selected Validation Data



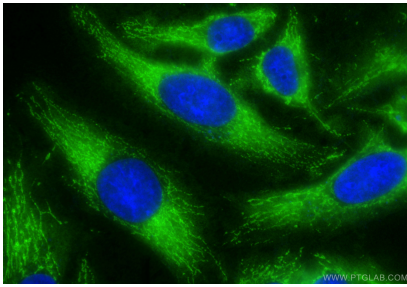
HeLa cells were subjected to SDS PAGE followed by western blot with 10439-1-AP (EIF3J antibody) at dilution of 1:500 incubated at room temperature for 1.5 hours. This data was developed using the same antibody clone with 10439-1-PBS in a different storage buffer formulation.



Immunohistochemical analysis of paraffin-embedded human breast cancer using 10439-1-AP (EIF3J antibody) at dilution of 1:100 (under 10x lens). This data was developed using the same antibody clone with 10439-1-PBS in a different storage buffer formulation.



IP result of anti-EIF3J (IP:10439-1-AP, 4ug; Detection:10439-1-AP 1:500) with HeLa cells lysate 880ug. This data was developed using the same antibody clone with 10439-1-PBS in a different storage buffer formulation.



Immunofluorescent analysis of (-20°C Ethanol) fixed HeLa cells using EIF3J antibody (10439-1-AP) at dilution of 1:400 and CoraLite®488-Conjugated Goat Anti-Rabbit IgG(H+L) (SA00013-2). This data was developed using the same antibody clone with 10439-1-PBS in a different storage buffer formulation.