

For Research Use Only

BAD Polyclonal antibody

Catalog Number: 10435-1-AP 103 Publications



Basic Information

Catalog Number: 10435-1-AP	GenBank Accession Number: BC001901	Purification Method: Antigen affinity purification
Concentration: 380 ug/ml	GeneID (NCBI): 572	Recommended Dilutions: WB 1:500-1:3000 IHC 1:100-1:500
Source: Rabbit	UNIPROT ID: Q92934	
Isotype: IgG	Full Name: BCL2-associated agonist of cell death	
Immunogen Catalog Number: AG0688	Calculated MW: 18 kDa	
	Observed MW: 18-25 kDa	

Applications

Tested Applications: WB, IHC, FC (Intra), ELISA	Positive Controls:
Cited Applications: WB, IHC	WB : HeLa cells, Jurkat cells, HepG2 cells, Neuro-2a cells
Species Specificity: human, mouse	IHC : human prostate hyperplasia tissue, human prostate cancer tissue, mouse liver tissue, human lymphoma tissue
Cited Species: human, mouse, rat, pig, sheep	
Note-IHC: suggested antigen retrieval with TE buffer pH 9.0; (*) Alternatively, antigen retrieval may be performed with citrate buffer pH 6.0	

Background Information

BAD, also named as BBC6 and BCL2L8, promotes cell death. It successfully competes for the binding to Bcl-X(L), Bcl-2 and Bcl-W, thereby affecting the level of heterodimerization of these proteins with BAX. BAD can reverse the death repressor activity of Bcl-X(L), but not that of Bcl-2. It appears to act as a link between growth factor receptor signaling and the apoptotic pathways.

Notable Publications

Author	Pubmed ID	Journal	Application
Yanan Li	27663303	BMC Microbiol	WB
Xuan Zhou	36150222	Chemosphere	WB
Minjing Li	31546831	Biomolecules	WB

Storage

Storage:
Store at -20°C. Stable for one year after shipment.
Storage Buffer:
PBS with 0.02% sodium azide and 50% glycerol, pH7.3
Aliquoting is unnecessary for -20°C storage

For technical support and original validation data for this product please contact:

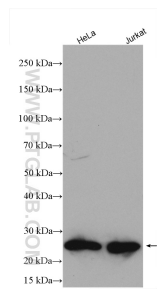
T: 4006900926

E: Proteintech-CN@ptglab.com

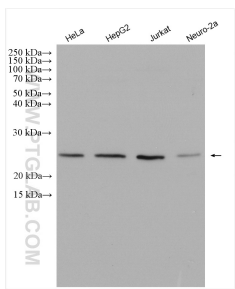
W: ptgcn.com

This product is exclusively available under Proteintech Group brand and is not available to purchase from any other manufacturer.

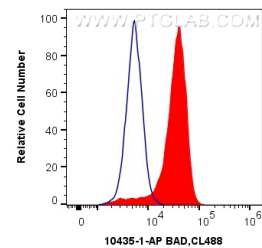
Selected Validation Data



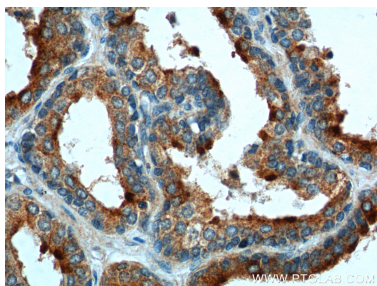
Various lysates were subjected to SDS PAGE followed by western blot with 10435-1-AP (BAD antibody) at dilution of 1:1000 incubated at room temperature for 1.5 hours.



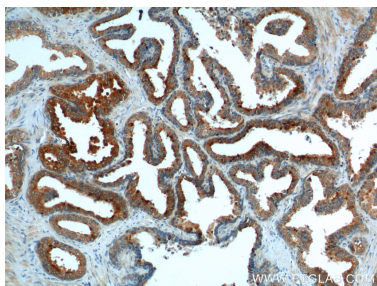
Various lysates were subjected to SDS PAGE followed by western blot with 10435-1-AP (BAD antibody) at dilution of 1:1500 incubated at room temperature for 1.5 hours.



1X10⁶ Jurkat cells were intracellularly stained with 0.4 ug Anti-Human BAD (10435-1-AP) and CoraLite®488-Conjugated AffiniPure Goat Anti-Rabbit IgG(H+L) at dilution 1:1000 (red), or 0.4 ug Isotype Control. Cells were fixed with 4% PFA and permeabilized with Flow Cytometry Perm Buffer (PF00011-C).



Immunohistochemical analysis of paraffin-embedded human prostate hyperplasia tissue slide using 10435-1-AP (BAD Antibody) at dilution of 1:200 (under 40x lens).



Immunohistochemical analysis of paraffin-embedded human prostate hyperplasia tissue slide using 10435-1-AP (BAD Antibody) at dilution of 1:200 (under 10x lens).