

For Research Use Only

# JTV1 Polyclonal antibody

Catalog Number: 10424-1-AP

Featured Product

22 Publications



## Basic Information

**Catalog Number:**

10424-1-AP

**Size:**

600 µg/ml

**Source:**

Rabbit

**Isotype:**

IgG

**Immunogen Catalog Number:**

AG0675

**GenBank Accession Number:**

BC002853

**GeneID (NCBI):**

7965

**UNIPROT ID:**

Q13155

**Full Name:**

JTV1 gene

**Calculated MW:**

36 kDa

**Observed MW:**

35 kDa

**Purification Method:**

Antigen affinity purification

**Recommended Dilutions:**

WB 1:500-1:1000

IP 0.5-4.0 µg for 1.0-3.0 mg of total protein lysate

IHC 1:20-1:200

IF 1:10-1:100

## Applications

**Tested Applications:**

IF/ICC, IHC, IP, WB, ELISA

**Cited Applications:**

CoIP, IF, IHC, WB

**Species Specificity:**

human, mouse, rat

**Cited Species:**

human, rat, mouse

**Note-IHC: suggested antigen retrieval with TE buffer pH 9.0; (\*) Alternatively, antigen retrieval may be performed with citrate buffer pH 6.0**

**Positive Controls:**

**WB:** HeLa cells, HepG2 cells, NIH/3T3 cells, K-562 cells, mouse liver tissue, L02 cells, rat liver tissue

**IP:** HeLa cells,

**IHC:** human testis tissue, human kidney tissue, mouse cerebellum tissue, mouse testis tissue, human cerebellum tissue

**IF:** HeLa cells, HepG2 cells

## Background Information

JTV1, also named p38, AIMP2, was first known as a factor associated with macromolecular protein complex, which consists several different aminoacyl-tRNA synthetases. JTV1 is a scaffold protein required for the assembly and stability of the multi-tRNA synthetase complex. JTV1 could act as a mediator of TGF-beta signaling and its functional importance in the control of MYC during lung differentiation. Blocks MDM2-mediated ubiquitination and degradation of p53/TP53. Functions as a proapoptotic factor. This is a rabbit polyclonal antibody raised against full-length of JTV1. There're two isoforms of JTV1 with MW about 27 kDa and 35 kDa,

## Notable Publications

Author	Pubmed ID	Journal	Application
Ko Han Seok HS	20823226	Proc Natl Acad Sci U S A	WB
Krishnendu Khan	36037331	Proc Natl Acad Sci U S A	WB
Hyojung Kim	28972555	Int J Mol Sci	WB

## Storage

**Storage:**

Store at -20°C. Stable for one year after shipment.

**Storage Buffer:**

PBS with 0.02% sodium azide and 50% glycerol pH 7.3.

Aliquoting is unnecessary for -20°C storage

For technical support and original validation data for this product please contact:

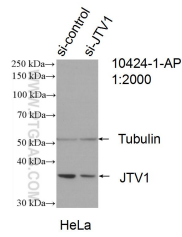
T: 4006900926

E: Proteintech-CN@ptglab.com

W: ptgcn.com

**This product is exclusively available under Proteintech Group brand and is not available to purchase from any other manufacturer.**

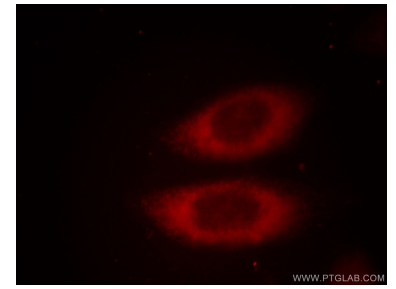
## Selected Validation Data



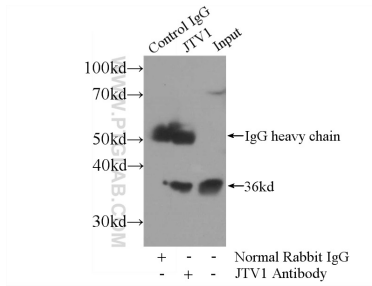
WB result of JTV1 antibody (10424-1-AP; 1:2000; incubated at room temperature for 1.5 hours) with sh-Control and sh-JTV1 transfected HeLa cells.



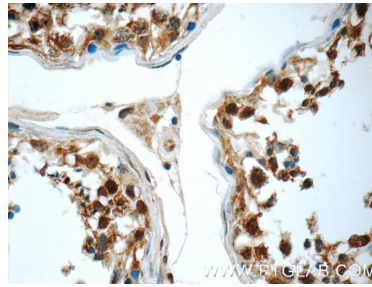
HeLa cells were subjected to SDS PAGE followed by western blot with 10424-1-AP (JTV1 antibody) at dilution of 1:1000 incubated at room temperature for 1.5 hours.



Immunofluorescent analysis of HeLa cells, using JTV1 antibody 10424-1-AP at 1:25 dilution and Rhodamine-labeled goat anti-rabbit IgG (red).



IP result of anti-JTV1 (IP:10424-1-AP, 3ug; Detection:10424-1-AP 1:1000) with HeLa cells lysate 800ug.



Immunohistochemical analysis of paraffin-embedded human testis tissue slide using 10424-1-AP (JTV1 Antibody) at dilution of 1:50 (under 40x lens).