

For Research Use Only

BCAS2 Polyclonal antibody

Catalog Number: 10414-1-AP

Featured Product

6 Publications



Basic Information

Catalog Number:

10414-1-AP

Size:

600 ug/ml

Source:

Rabbit

Isotype:

IgG

Immunogen Catalog Number:

AG0669

GenBank Accession Number:

BC005285

GeneID (NCBI):

10286

UNIPROT ID:

O75934

Full Name:

breast carcinoma amplified sequence

2

Calculated MW:

26 kDa

Observed MW:

26-32 kDa

Purification Method:

Antigen affinity purification

Recommended Dilutions:

WB 1:1000-1:8000

IP 0.5-4.0 ug for 1.0-3.0 mg of total protein lysate

IHC 1:50-1:500

IF/ICC 1:400-1:1600

Applications

Tested Applications:

WB, IHC, IF/ICC, IP, ELISA

Cited Applications:

WB, IHC, IF, RIP

Species Specificity:

human, mouse, rat, monkey

Cited Species:

human, mouse

Note-IHC: suggested antigen retrieval with *TE buffer pH 9.0*; (*) Alternatively, antigen retrieval may be performed with *citrate buffer pH 6.0*

Positive Controls:

WB : HeLa cells, mouse brain tissue, mouse liver tissue, hESC cells, human brain tissue, K-562 cells, COS-7 cells, SH-SY5Y cells, PC-12 cells, C6 cells

IP : mouse brain tissue,

IHC : human prostate cancer tissue, human colon cancer tissue, human breast cancer tissue

IF/ICC : HeLa cells, MCF-7 cells

Background Information

BCAS2 associates with the spliceosome and implicates in mRNA splicing

Notable Publications

Author	Pubmed ID	Journal	Application
Wenbo Liu	28128212	Nat Commun	WB
Jiaqi Zhang	34972250	FASEB J	WB,IF
P-C Kuo	25461807	Br J Cancer	IHC, WB

Storage

Storage:

Store at -20°C. Stable for one year after shipment.

Storage Buffer:

PBS with 0.02% sodium azide and 50% glycerol pH 7.3.

Aliquoting is unnecessary for -20°C storage

For technical support and original validation data for this product please contact:

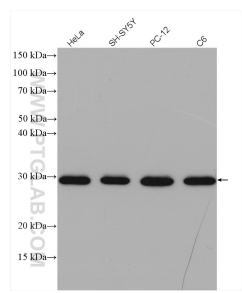
T: 4006900926

E: Proteintech-CN@ptglab.com

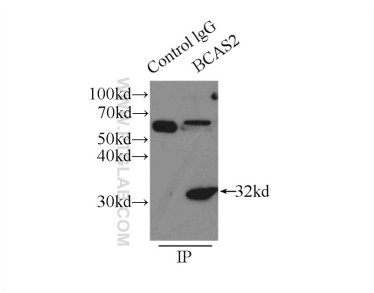
W: ptgcn.com

This product is exclusively available under Proteintech Group brand and is not available to purchase from any other manufacturer.

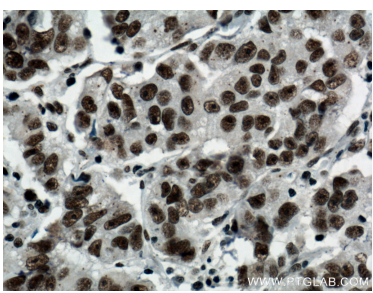
Selected Validation Data



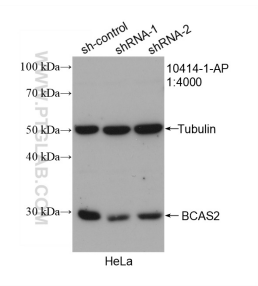
Various lysates were subjected to SDS PAGE followed by western blot with 10414-1-AP (BCAS2 antibody) at dilution of 1:4000 incubated at room temperature for 1.5 hours.



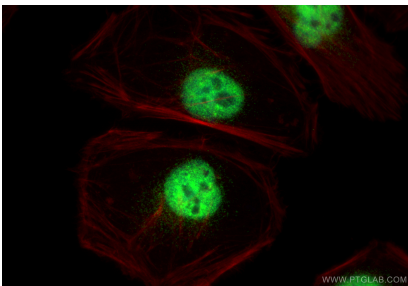
IP result of anti-BCAS2 (IP:10414-1-AP, 3ug; Detection:10414-1-AP 1:1000) with mouse brain tissue lysate 6500ug.



Immunohistochemical analysis of paraffin-embedded human prostate cancer tissue slide using 10414-1-AP (BCAS2 Antibody) at dilution of 1:200 (under 40x lens). Heat mediated antigen retrieval with Tris-EDTA buffer (pH 9.0).



WB result of BCAS2 antibody (10414-1-AP; 1:4000; incubated at room temperature for 1.5 hours) with sh-Control and sh-BCAS2 transfected HeLa cells.



Immunofluorescent analysis of (4% PFA) fixed HeLa cells using BCAS2 antibody (10414-1-AP) at dilution of 1:800 and CoraLite@488-Conjugated Goat Anti-Rabbit IgG(H+L) (SA00013-2), CL594-Phalloidin (red).