

For Research Use Only

# RFC2 Polyclonal antibody

Catalog Number: 10410-1-AP

Featured Product

5 Publications



## Basic Information

Catalog Number:

10410-1-AP

Source:

Rabbit

Isotype:

IgG

Immunogen Catalog Number:

AG0663

GenBank Accession Number:

BC002813

GeneID (NCBI):

5982

UNIPROT ID:

P35250

Full Name:

replication factor C (activator 1) 2,  
40kDa

Calculated MW:

39 kDa

Observed MW:

38 kDa

Purification Method:

Antigen affinity purification

Recommended Dilutions:

WB: 1:500-1:1000

IP: 0.5-4.0 ug for 1.0-3.0 mg of total  
protein lysate

IF/ICC: 1:50-1:500

## Applications

Tested Applications:

WB, IF/ICC, IP, ELISA

Cited Applications:

WB

Species Specificity:

human

Cited Species:

human, mouse

Positive Controls:

WB : HeLa cells, MCF-7 cells, PC-3 cells, Raji cells

IP : HeLa cells,

IF/ICC : HeLa cells,

## Background Information

RFC2, also named as RFC40, belongs to the activator 1 small subunits family. It is a 40kd Activator 1 subunit. It binds ATP. The elongation of primed DNA templates by DNA polymerase delta and epsilon requires the action of the accessory proteins proliferating cell nuclear antigen (PCNA) and activator 1. RFC2 is a constitutively expressed protein essential for both DNA repair and replication. (PMID: 20660762).

## Notable Publications

Author	Pubmed ID	Journal	Application
Caron Etienne E	21952136	Mol Syst Biol	WB
Chiang Po-Min PM	20660762	Proc Natl Acad Sci U S A	WB
Xu Zhao	35210438	Sci Rep	WB

## Storage

Storage:

Store at -20°C. Stable for one year after shipment.

Storage Buffer:

PBS with 0.02% sodium azide and 50% glycerol, pH7.3

Aliquoting is unnecessary for -20°C storage

For technical support and original validation data for this product please contact:

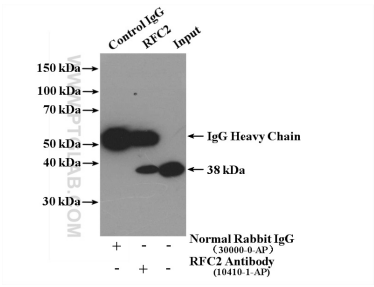
T: 4006900926

E: [Proteintech-CN@ptglab.com](mailto:Proteintech-CN@ptglab.com)

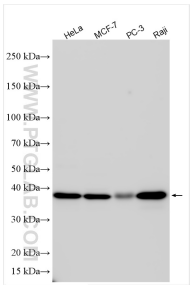
W: [ptgcn.com](http://ptgcn.com)

This product is exclusively available under Proteintech Group brand and is not available to purchase from any other manufacturer.

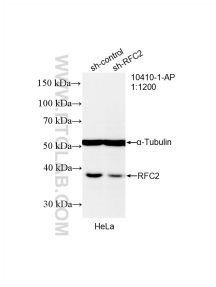
Selected Validation Data



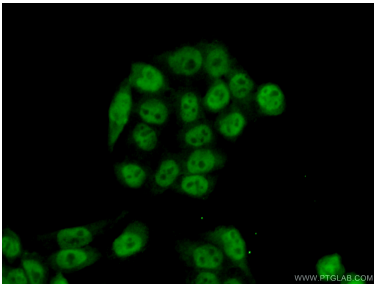
IP result of anti-RFC2 (IP:10410-1-AP, 4ug; Detection:10410-1-AP 1:500) with HeLa cells lysate 3000 ug.



Various lysates were subjected to SDS PAGE followed by western blot with 10410-1-AP (RFC2 antibody) at dilution of 1:500 incubated at room temperature for 1.5 hours.



WB result of RFC2 antibody (10410-1-AP; 1:1200; incubated at room temperature for 1.5 hours) with sh-Control and sh-RFC2 transfected HeLa cells.



Immunofluorescent analysis of (10% Formaldehyde) fixed HeLa cells using 10410-1-AP (RFC2 antibody) at dilution of 1:50 and Alexa Fluor 488-conjugated AffiniPure Goat Anti-Rabbit IgG(H+L).