

For Research Use Only

CARD14 Polyclonal antibody

Catalog Number: 10400-1-AP **3 Publications**



Basic Information

Catalog Number: 10400-1-AP	GenBank Accession Number: BC018142	Purification Method: Antigen affinity purification
Size: 287 µg/ml	GeneID (NCBI): 79092	Recommended Dilutions: WB 1:500-1:1000
Source: Rabbit	UNIPROT ID: Q9BXL6	
Isotype: IgG	Full Name: caspase recruitment domain family, member 14	
Immunogen Catalog Number: AG0628	Calculated MW: 113 kDa	
	Observed MW: 113-140 kDa	

Applications

Tested Applications: WB, ELISA	Positive Controls: WB : HeLa cells,
Cited Applications: WB	
Species Specificity: human, mouse, rat	
Cited Species: human, mouse	

Background Information

CARD14/CARMA2 is a novel caspase recruitment domain-containing protein 14 and is also a membrane-associated guanylate kinase (MAGUK) family member. CARD domain is a protein-binding element that mediates the assembly of CARD-containing proteins into apoptosis and NF- κ B signaling complexes, which has been implicated in inflammatory disorders. CARD14 activates NF- κ B signaling via interaction with BCL10. Defects in CARD14 are the cause of susceptibility to psoriasis type 2 (PSORS2), which is a common inflammatory disorder of the skin and other organs caused by abnormal keratinocyte proliferation and infiltration of inflammatory cells into the dermis and epidermis.

Notable Publications

Author	Pubmed ID	Journal	Application
Domien Vanneste	36009554	Biomedicines	WB
J Randall McAuley	31420608	Oncogene	WB
Elien Van Nuffel	32343482	EMBO Rep	WB

Storage

Storage:
Store at -20°C. Stable for one year after shipment.
Storage Buffer:
PBS with 0.02% sodium azide and 50% glycerol pH 7.3.
Aliquoting is unnecessary for -20°C storage

For technical support and original validation data for this product please contact:

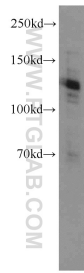
T: 4006900926

E: Proteintech-CN@ptglab.com

W: ptgcn.com

This product is exclusively available under Proteintech Group brand and is not available to purchase from any other manufacturer.

Selected Validation Data



HeLa cells were subjected to SDS PAGE followed by western blot with 10400-1-AP (CARD14 antibody) at dilution of 1:500 incubated at room temperature for 1.5 hours.