

For Research Use Only

# COMMD5 Polyclonal antibody, PBS Only

Catalog Number:10393-1-PBS

Featured Product



## Basic Information

Catalog Number:

10393-1-PBS

Concentration:

1 mg/ml

Source:

Rabbit

Isotype:

IgG

Immunogen Catalog Number:

AG0592

GenBank Accession Number:

BC003055

GeneID (NCBI):

28991

UNIPROT ID:

Q9GZQ3

Full Name:

COMM domain containing 5

Calculated MW:

25 kDa

Observed MW:

25 kDa

Purification Method:

Antigen affinity purification

## Applications

Tested Applications:

WB, IF/ICC, IP, Indirect ELISA

Species Specificity:

human, mouse

## Background Information

COMM domain containing 5 (COMMD5, synonyms: HCARG, HT002) is a hypertension-related calcium-regulated gene. COMMD5 is negatively regulated by extracellular calcium concentration, and its basal mRNA levels were higher in hypertensive animals. Tissue distribution of COMMD5 shows a preponderance in the heart, stomach, jejunum, kidney (tubular fraction), liver, and adrenal gland (mainly in the medulla). COMMD5 mRNA is significantly more expressed in adult than in fetal organs, and its levels are decreased in tumors and cancerous cell lines. COMMD5 protein has no transmembrane domain, but contains 67% -helix content, a calcium-binding site, four putative "leucine zipper" motifs, and a nuclear receptor-binding domain. At the subcellular level, COMMD5 shows a nuclear localization.

## Storage

Storage:

Store at -80°C.

**The product is shipped with ice packs. Upon receipt, store it immediately at -80°C**

Storage Buffer:

PBS only, pH7.3

For technical support and original validation data for this product please contact:

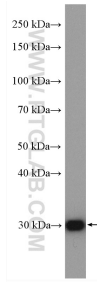
T: 4006900926

E: [Proteintech-CN@ptglab.com](mailto:Proteintech-CN@ptglab.com)

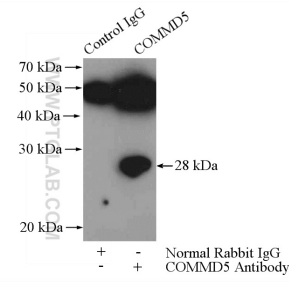
W: [ptgcn.com](http://ptgcn.com)

**This product is exclusively available under Proteintech Group brand and is not available to purchase from any other manufacturer.**

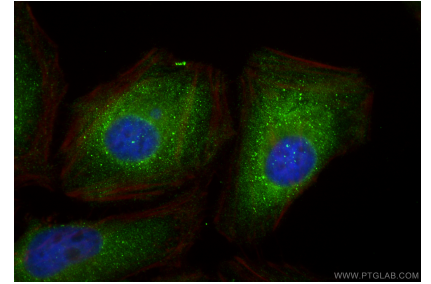
## Selected Validation Data



mouse kidney tissue were subjected to SDS PAGE followed by western blot with 10393-1-AP (COMMD5 antibody) at dilution of 1:1000 incubated at room temperature for 1.5 hours. This data was developed using the same antibody clone with 10393-1-PBS in a different storage buffer formulation.



IP result of anti-COMMD5 (IP:10393-1-AP, 4 $\mu$ g; Detection:10393-1-AP 1:500) with mouse heart tissue lysate 3200 $\mu$ g. This data was developed using the same antibody clone with 10393-1-PBS in a different storage buffer formulation.



Immunofluorescent analysis of (4% PFA) fixed HeLa cells using COMMD5 antibody (10393-1-AP) at dilution of 1:400 and CoraLite@488-Conjugated Goat Anti-Rabbit IgG(H+L) (SA00013-2), CL594-Phalloidin (red). This data was developed using the same antibody clone with 10393-1-PBS in a different storage buffer formulation.