

For Research Use Only

COMMD5 Polyclonal antibody

Catalog Number: 10393-1-AP

Featured Product

11 Publications



Basic Information

Catalog Number:

10393-1-AP

Concentration:

700 ug/ml

Source:

Rabbit

Isotype:

IgG

Immunogen Catalog Number:

AG0592

GenBank Accession Number:

BC003055

GeneID (NCBI):

28991

UNIPROT ID:

Q9GZQ3

Full Name:

COMM domain containing 5

Calculated MW:

25 kDa

Observed MW:

25 kDa

Purification Method:

Antigen affinity purification

Recommended Dilutions:

WB: 1:500-1:2000

IP: 0.5-4.0 ug for 1.0-3.0 mg of total protein lysate

IF/ICC: 1:200-1:800

Applications

Tested Applications:

WB, IF/ICC, IP, ELISA

Cited Applications:

WB, IHC, IF, CoIP

Species Specificity:

human, mouse

Cited Species:

human, mouse

Positive Controls:

WB : mouse kidney tissue, human heart tissue, human stomach tissue, mouse stomach tissue, mouse heart tissue, HEK-293 cells, MCF-7 cells, human placenta tissue

IP : mouse heart tissue,

IF/ICC : HeLa cells,

Background Information

COMM domain containing 5 (COMMD5, synonyms: HCARG, HT002) is a hypertension-related calcium-regulated gene. COMMD5 is negatively regulated by extracellular calcium concentration, and its basal mRNA levels were higher in hypertensive animals. Tissue distribution of COMMD5 shows a preponderance in the heart, stomach, jejunum, kidney (tubular fraction), liver, and adrenal gland (mainly in the medulla). COMMD5 mRNA is significantly more expressed in adult than in fetal organs, and its levels are decreased in tumors and cancerous cell lines. COMMD5 protein has no transmembrane domain, but contains 67% α -helix content, a calcium-binding site, four putative "leucine zipper" motifs, and a nuclear receptor-binding domain. At the subcellular level, COMMD5 shows a nuclear localization.

Notable Publications

Author	Pubmed ID	Journal	Application
Hiroiyuki Matsuda	21921141	J Am Soc Nephrol	IHC
Chen Bai-Li BL	18949406	Oncol Rep	IHC
Hiroiyuki Matsuda	29050225	Oncotarget	IHC

Storage

Storage:

Store at -20°C. Stable for one year after shipment.

Storage Buffer:

PBS with 0.02% sodium azide and 50% glycerol, pH7.3

Aliquoting is unnecessary for -20°C storage

For technical support and original validation data for this product please contact:

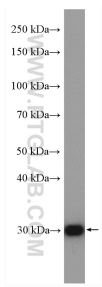
T: 4006900926

E: Proteintech-CN@ptglab.com

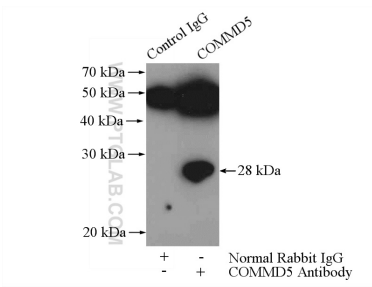
W: ptgcn.com

This product is exclusively available under Proteintech Group brand and is not available to purchase from any other manufacturer.

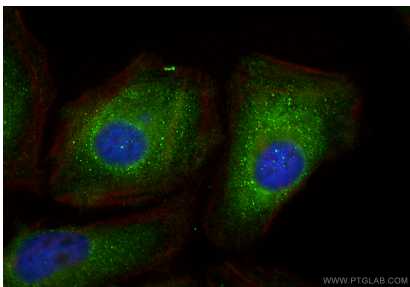
Selected Validation Data



mouse kidney tissue were subjected to SDS PAGE followed by western blot with 10393-1-AP (COMMD5 antibody) at dilution of 1:1000 incubated at room temperature for 1.5 hours.



IP result of anti-COMMD5 (IP:10393-1-AP, 4ug; Detection:10393-1-AP 1:500) with mouse heart tissue lysate 3200ug.



Immunofluorescent analysis of (4% PFA) fixed HeLa cells using COMMD5 antibody (10393-1-AP) at dilution of 1:400 and CoraLite@488-Conjugated Goat Anti-Rabbit IgG(H+L) (SA00013-2), CL594-Phalloidin (red).