

For Research Use Only

UGP2 Polyclonal antibody

Catalog Number:10391-1-AP

Featured Product

5 Publications



Basic Information

Catalog Number:

10391-1-AP

Size:

300 µg/ml

Source:

Rabbit

Isotype:

IgG

Immunogen Catalog Number:

AG0590

GenBank Accession Number:

BC002954

GeneID (NCBI):

7360

UNIPROT ID:

Q16851

Full Name:

UDP-glucose pyrophosphorylase 2

Calculated MW:

56 kDa

Observed MW:

50-56 kDa

Purification Method:

Antigen affinity purification

Recommended Dilutions:

WB 1:500-1:1000

IHC 1:20-1:200

Applications

Tested Applications:

WB, IHC, ELISA

Cited Applications:

WB, IHC

Species Specificity:

human, mouse, rat

Cited Species:

human, rat

Note-IHC: suggested antigen retrieval with TE buffer pH 9.0; (*) Alternatively, antigen retrieval may be performed with citrate buffer pH 6.0

Positive Controls:

WB : HepG2 cells, mouse liver tissue, HeLa cells, HEK-293 cells, rat liver tissue

IHC : human ovary tumor tissue, human liver cancer tissue

Background Information

UDP-glucose pyrophosphorylase 2 (UGP2, synonyms: UDPG, UGPP2, UDPGP2, Phc379) is an important intermediary in mammalian carbohydrate interconversions. It transfers a glucose moiety from glucose-1-phosphate to MgUTP and forms UDP-glucose and MgPPi. In liver and muscle tissue, UDP-glucose is a direct precursor of glycogen; in lactating mammary gland it is converted to UDP-galactose which is then converted to lactose. So far two isoforms are encoded by two transcript variants have been found.

Notable Publications

Author	Pubmed ID	Journal	Application
Qiuyue Hu	32733617	Dis Markers	IHC
Chun Zeng	30816613	J Cell Biochem	WB
Dong-Xue Ding	35281731	iScience	WB

Storage

Storage:

Store at -20°C. Stable for one year after shipment.

Storage Buffer:

PBS with 0.02% sodium azide and 50% glycerol pH 7.3.

Aliquoting is unnecessary for -20°C storage

For technical support and original validation data for this product please contact:

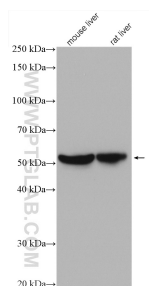
T: 4006900926

E: Proteintech-CN@ptglab.com

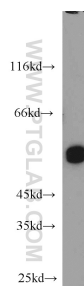
W: ptgcn.com

This product is exclusively available under Proteintech Group brand and is not available to purchase from any other manufacturer.

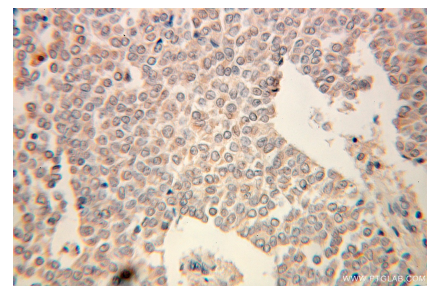
Selected Validation Data



Various lysates were subjected to SDS PAGE followed by western blot with 10391-1-AP (UGP2 antibody) at dilution of 1:2000 incubated at room temperature for 1.5 hours.



HepG2 cells were subjected to SDS PAGE followed by western blot with 10391-1-AP (UGP2 antibody) at dilution of 1:500 incubated at room temperature for 1.5 hours.



Immunohistochemical analysis of paraffin-embedded human ovary tumor using 10391-1-AP (UGP2 antibody) at dilution of 1:100 (under 25x lens).