

For Research Use Only

# ALDH7A1 Polyclonal antibody

Catalog Number: 10368-1-AP

Featured Product

8 Publications



## Basic Information

Catalog Number:

10368-1-AP

Size:

500 µg/ml

Source:

Rabbit

Isotype:

IgG

Immunogen Catalog Number:

AG0383

GenBank Accession Number:

BC002515

GeneID (NCBI):

501

UNIPROT ID:

P49419

Full Name:

aldehyde dehydrogenase 7 family, member A1

Calculated MW:

55 kDa

Observed MW:

55 kDa

Purification Method:

Antigen affinity purification

Recommended Dilutions:

WB 1:500-1:3000

IHC 1:250-1:1000

## Applications

Tested Applications:

WB, IHC, ELISA

Cited Applications:

WB, IHC, IF

Species Specificity:

human, mouse, rat

Cited Species:

human, mouse, rat

**Note-IHC: suggested antigen retrieval with TE buffer pH 9.0; (\*) Alternatively, antigen retrieval may be performed with citrate buffer pH 6.0**

Positive Controls:

**WB** : HepG2 cells, mouse kidney tissue, mouse liver tissue, HeLa cells

**IHC** : human ovary tumor tissue,

## Background Information

ALDH7A1 (Alpha-aminoadipic semialdehyde dehydrogenase) is also named as ATQ1 and belongs to the aldehyde dehydrogenase family. It plays a major role in the detoxification of aldehydes generated by alcohol metabolism and lipid peroxidation. This protein has 4 isoforms produced by alternative splicing.

## Notable Publications

Author	Pubmed ID	Journal	Application
Deshi Dong	25310017	Food Funct	WB
Xiaolei Zhang	36382280	Chem Sci	WB
Ya-Nan Song	28291813	PLoS One	WB

## Storage

Storage:

Store at -20°C. Stable for one year after shipment.

Storage Buffer:

PBS with 0.02% sodium azide and 50% glycerol pH 7.3.

Aliquoting is unnecessary for -20°C storage

For technical support and original validation data for this product please contact:

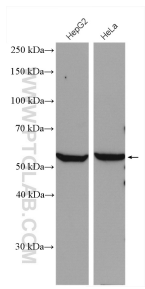
T: 4006900926

E: [Proteintech-CN@ptglab.com](mailto:Proteintech-CN@ptglab.com)

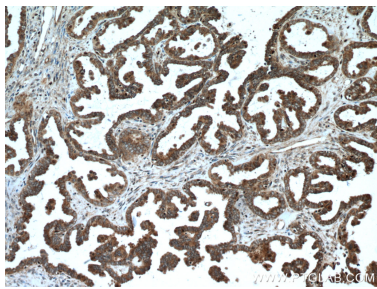
W: [ptgcn.com](http://ptgcn.com)

**This product is exclusively available under Proteintech Group brand and is not available to purchase from any other manufacturer.**

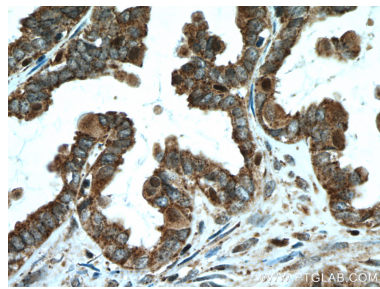
Selected Validation Data



Various lysates were subjected to SDS PAGE followed by western blot with 10368-1-AP (ALDH7A1 antibody) at dilution of 1:1500 incubated at room temperature for 1.5 hours.



Immunohistochemical analysis of paraffin-embedded human ovary tumor tissue slide using 10368-1-AP (ALDH7A1 antibody) at dilution of 1:500 (under 10x lens. Heat mediated antigen retrieval with Tris-EDTA buffer (pH 9.0).



Immunohistochemical analysis of paraffin-embedded human ovary tumor tissue slide using 10368-1-AP (ALDH7A1 antibody) at dilution of 1:500 (under 40x lens. Heat mediated antigen retrieval with Tris-EDTA buffer (pH 9.0).