

For Research Use Only

# HBS1L Polyclonal antibody, PBS Only

Catalog Number:10359-1-PBS

Featured Product



## Basic Information

Catalog Number:

10359-1-PBS

Size:

1 mg/ml

Source:

Rabbit

Isotype:

IgG

Immunogen Catalog Number:

AG0388

GenBank Accession Number:

BC001465

GeneID (NCBI):

10767

UNIPROT ID:

Q9Y450

Full Name:

HBS1-like (*S. cerevisiae*)

Calculated MW:

75 kDa

Observed MW:

75 kDa

Purification Method:

Antigen affinity purification

## Applications

Tested Applications:

WB, IHC, IF/ICC, IP, Indirect ELISA

Species Specificity:

human, mouse

## Background Information

HBS1L (HBS1-like), also known as EF-1a or ERFS, is a 684 amino acid protein that belongs to the GTP-binding elongation factor family and exists as multiple alternatively spliced isoforms. Expressed in kidney, brain, heart, placenta, liver, muscle and pancreas, HSB1L is thought to play a role in controlling fetal hemoglobin levels, specifically influencing platelet, monocyte and erythrocyte hemoglobin content. The gene encoding HBS1L maps to a locus on human chromosome 6 that is associated with sickle cell anemia and beta-thalassemia, suggesting a role for HBS1L in the pathogenesis of blood disorders. This antibody specifically recognizes the 75kd human HBS1L protein.

## Storage

Storage:

Store at -80°C.

The product is shipped with ice packs. Upon receipt, store it immediately at -80°C

Storage Buffer:

PBS Only

For technical support and original validation data for this product please contact:

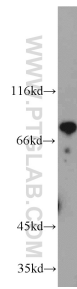
T: 4006900926

E: [Proteintech-CN@ptglab.com](mailto:Proteintech-CN@ptglab.com)

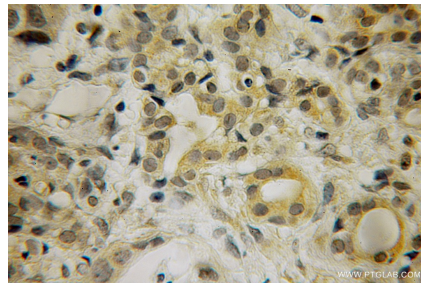
W: [ptgcn.com](http://ptgcn.com)

This product is exclusively available under Proteintech Group brand and is not available to purchase from any other manufacturer.

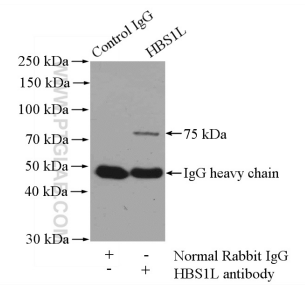
## Selected Validation Data



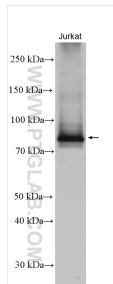
Jurkat cells were subjected to SDS PAGE followed by western blot with 10359-1-AP (HBS1L antibody) at dilution of 1:2000 incubated at room temperature for 1.5 hours. This data was developed using the same antibody clone with 10359-1-PBS in a different storage buffer formulation.



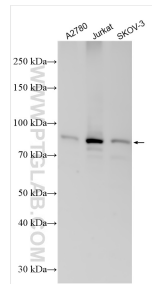
Immunohistochemical analysis of paraffin-embedded human pancreas cancer using 10359-1-AP (HBS1L antibody) at dilution of 1:50 (under 25x lens). This data was developed using the same antibody clone with 10359-1-PBS in a different storage buffer formulation.



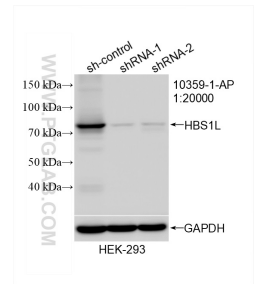
IP result of anti-HBS1L (IP:10359-1-AP, 4ug; Detection:10359-1-AP 1:1000) with mouse brain tissue lysate 4000ug. This data was developed using the same antibody clone with 10359-1-PBS in a different storage buffer formulation.



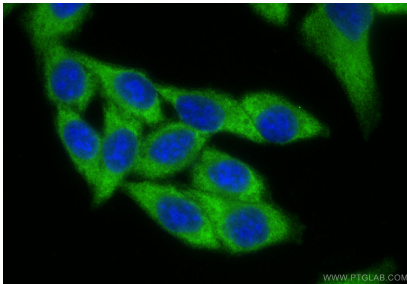
Jurkat cells were subjected to SDS PAGE followed by western blot with 10359-1-AP (HBS1L antibody) at dilution of 1:10000 incubated at room temperature for 1.5 hours. This data was developed using the same antibody clone with 10359-1-PBS in a different storage buffer formulation.



Various lysates were subjected to SDS PAGE followed by western blot with 10359-1-AP (HBS1L antibody) at dilution of 1:8000 incubated at room temperature for 1.5 hours. This data was developed using the same antibody clone with 10359-1-PBS in a different storage buffer formulation.



WB result of HBS1L antibody (10359-1-AP; 1:20000; incubated at room temperature for 1.5 hours) with sh-Control and sh-HBS1L transfected HEK-293 cells. This data was developed using the same antibody clone with 10359-1-PBS in a different storage buffer formulation.



Immunofluorescent analysis of (-20°C Ethanol) fixed HepG2 cells using HBS1L antibody (10359-1-AP) at dilution of 1:400 and CoraLite® 488-Conjugated Goat Anti-Rabbit IgG(H+L) (SA00013-2). This data was developed using the same antibody clone with 10359-1-PBS in a different storage buffer formulation.