

For Research Use Only

HBS1L Polyclonal antibody

Catalog Number: 10359-1-AP

Featured Product

8 Publications



Basic Information

Catalog Number:

10359-1-AP

Size:

1000 ug/ml

Source:

Rabbit

Isotype:

IgG

Immunogen Catalog Number:

AG0388

GenBank Accession Number:

BC001465

GeneID (NCBI):

10767

UNIPROT ID:

Q9Y450

Full Name:

HBS1-like (S. cerevisiae)

Calculated MW:

75 kDa

Observed MW:

75 kDa

Purification Method:

Antigen affinity purification

Recommended Dilutions:

WB 1:5000-1:50000

IP 0.5-4.0 ug for 1.0-3.0 mg of total protein lysate

IHC 1:20-1:200

IF/ICC 1:200-1:800

Applications

Tested Applications:

WB, IHC, IF/ICC, IP, ELISA

Cited Applications:

WB, IF

Species Specificity:

human, mouse

Cited Species:

human, mouse

Positive Controls:

WB : Jurkat cells, A2780 cells, HEK-293 cells, mouse brain tissue, SKOV-3 cells

IP : mouse brain tissue,

IHC : human pancreas cancer tissue,

IF/ICC : HepG2 cells,

Note-IHC: suggested antigen retrieval with TE buffer pH 9.0; (*) Alternatively, antigen retrieval may be performed with citrate buffer pH 6.0

Background Information

HBS1L (HBS1-like), also known as EF-1a or ERFS, is a 684 amino acid protein that belongs to the GTP-binding elongation factor family and exists as multiple alternatively spliced isoforms. Expressed in kidney, brain, heart, placenta, liver, muscle and pancreas, HSB1L is thought to play a role in controlling fetal hemoglobin levels, specifically influencing platelet, monocyte and erythrocyte hemoglobin content. The gene encoding HBS1L maps to a locus on human chromosome 6 that is associated with sickle cell anemia and beta-thalassemia, suggesting a role for HBS1L in the pathogenesis of blood disorders. This antibody specifically recognizes the 75kd human HBS1L protein.

Notable Publications

Author	Pubmed ID	Journal	Application
John Rp Knight	25353634	Biochem J	WB
Michael K Slevin	24656133	Mol Cell	WB
Hussein H Aly	27281821	J Biol Chem	WB

Storage

Storage:

Store at -20°C. Stable for one year after shipment.

Storage Buffer:

PBS with 0.02% sodium azide and 50% glycerol pH 7.3.

Aliquoting is unnecessary for -20°C storage

For technical support and original validation data for this product please contact:

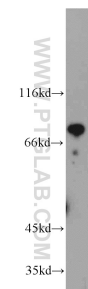
T: 4006900926

E: Proteintech-CN@ptglab.com

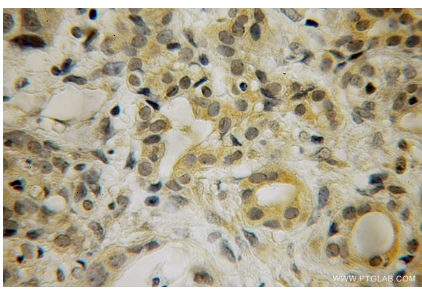
W: ptgcn.com

This product is exclusively available under Proteintech Group brand and is not available to purchase from any other manufacturer.

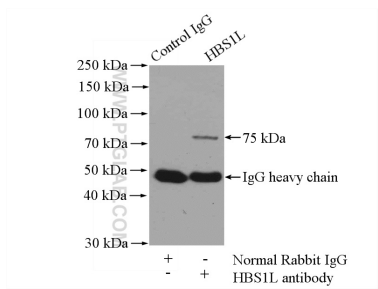
Selected Validation Data



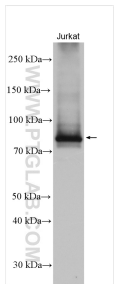
Jurkat cells were subjected to SDS PAGE followed by western blot with 10359-1-AP (HBS1L antibody) at dilution of 1:2000 incubated at room temperature for 1.5 hours.



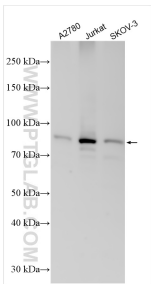
Immunohistochemical analysis of paraffin-embedded human pancreas cancer using 10359-1-AP (HBS1L antibody) at dilution of 1:50 (under 25x lens).



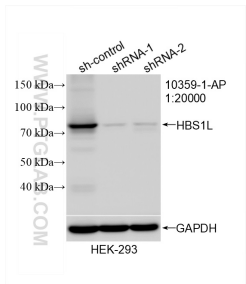
IP result of anti-HBS1L (IP:10359-1-AP, 4ug; Detection:10359-1-AP 1:1000) with mouse brain tissue lysate 4000ug.



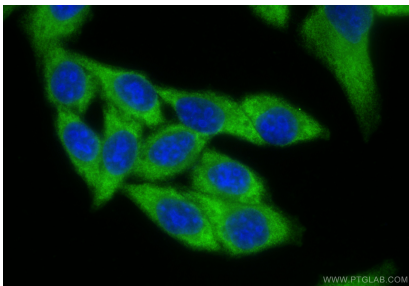
Jurkat cells were subjected to SDS PAGE followed by western blot with 10359-1-AP (HBS1L antibody) at dilution of 1:10000 incubated at room temperature for 1.5 hours.



Various lysates were subjected to SDS PAGE followed by western blot with 10359-1-AP (HBS1L antibody) at dilution of 1:8000 incubated at room temperature for 1.5 hours.



WB result of HBS1L antibody (10359-1-AP; 1:20000; incubated at room temperature for 1.5 hours) with sh-Control and sh-HBS1L transfected HEK-293 cells.



Immunofluorescent analysis of (-20°C Ethanol) fixed HepG2 cells using HBS1L antibody (10359-1-AP) at dilution of 1:400 and CoraLite® 488-Conjugated Goat Anti-Rabbit IgG(H+L) (SA00013-2).