

For Research Use Only

GGA2 Polyclonal antibody

Catalog Number: 10356-1-AP

Featured Product

2 Publications



Basic Information

Catalog Number:

10356-1-AP

Size:

500 µg/ml

Source:

Rabbit

Isotype:

IgG

Immunogen Catalog Number:

AG0370

GenBank Accession Number:

BC000284

GeneID (NCBI):

23062

UNIPROT ID:

Q9UJY4

Full Name:

golgi associated, gamma adaptin ear containing, ARF binding protein 2

Calculated MW:

67 kDa

Observed MW:

67 kDa

Purification Method:

Antigen affinity purification

Recommended Dilutions:

WB 1:500-1:2000

IHC 1:200-1:800

IF 1:50-1:500

Applications

Tested Applications:

IF/ICC, IHC, WB, ELISA

Cited Applications:

WB

Species Specificity:

human, mouse, rat

Cited Species:

human, rat

Note-IHC: suggested antigen retrieval with TE buffer pH 9.0; (*) Alternatively, antigen retrieval may be performed with citrate buffer pH 6.0

Positive Controls:

WB: mouse brain tissue, HeLa cells, mouse adipose tissue, human kidney tissue

IHC: human colon cancer tissue, human stomach cancer tissue

IF: HeLa cells,

Background Information

GGA2, also known as VEAR, belongs to the GGA protein family and regulates the trafficking of proteins between the trans-Golgi network and the lysosome. GGA2 has an amino-terminal VHS domain in its N terminus which mediates sorting of the mannose 6-phosphate receptors at the trans-Golgi network. They also contain a carboxy-terminal region with homology to the ear domain of gamma-adaptins.

Notable Publications

Author	Pubmed ID	Journal	Application
Arunas Kvainickas	28935632	J Cell Biol	WB
Bing Li	35265682	Front Cardiovasc Med	WB

Storage

Storage:

Store at -20°C. Stable for one year after shipment.

Storage Buffer:

PBS with 0.02% sodium azide and 50% glycerol pH 7.3.

Aliquoting is unnecessary for -20°C storage

For technical support and original validation data for this product please contact:

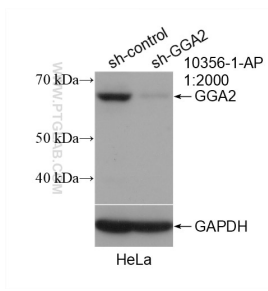
T: 4006900926

E: Proteintech-CN@ptglab.com

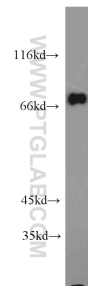
W: ptgcn.com

This product is exclusively available under Proteintech Group brand and is not available to purchase from any other manufacturer.

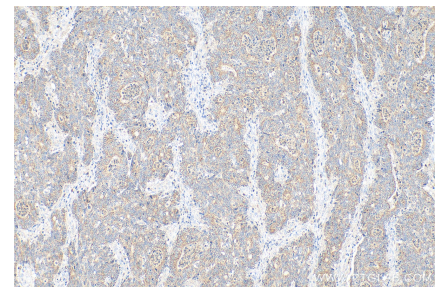
Selected Validation Data



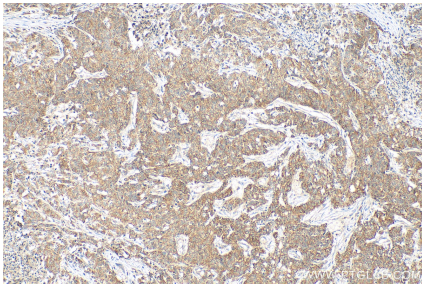
WB result of GGA2 antibody (10356-1-AP; 1:2000; incubated at room temperature for 1.5 hours) with sh-Control and sh-GGA2 transfected HeLa cells.



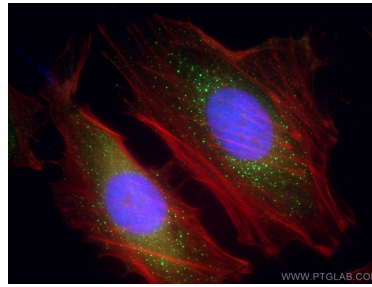
mouse brain tissue were subjected to SDS PAGE followed by western blot with 10356-1-AP (GGA2 antibody) at dilution of 1:1000 incubated at room temperature for 1.5 hours.



Immunohistochemical analysis of paraffin-embedded human colon cancer tissue slide using 10356-1-AP (GGA2 antibody) at dilution of 1:400 (under 10x lens). Heat mediated antigen retrieval with Tris-EDTA buffer (pH 9.0).



Immunohistochemical analysis of paraffin-embedded human stomach cancer tissue slide using 10356-1-AP (GGA2 antibody) at dilution of 1:400 (under 10x lens). Heat mediated antigen retrieval with Tris-EDTA buffer (pH 9.0).



Immunofluorescent analysis of (4% PFA) fixed HeLa cells using GGA2 antibody (10356-1-AP) at dilution of 1:200 and CoraLite@488-Conjugated AffiniPure Goat Anti-Rabbit IgG(H+L), CL594-Phalloidin (red).