

For Research Use Only

SNRPD1 Polyclonal antibody

Catalog Number: 10352-1-AP **3 Publications**



Basic Information

Catalog Number:

10352-1-AP

Size:

700 µg/ml

Source:

Rabbit

Isotype:

IgG

Immunogen Catalog Number:

AG0364

GenBank Accession Number:

BC001721

GeneID (NCBI):

6632

UNIPROT ID:

P62314

Full Name:

small nuclear ribonucleoprotein D1 polypeptide 16kDa

Calculated MW:

16 kDa

Observed MW:

13 kDa

Purification Method:

Antigen affinity purification

Recommended Dilutions:

WB 1:500-1:1000

Applications

Tested Applications:

WB, ELISA

Cited Applications:

WB, IHC

Species Specificity:

human

Cited Species:

human, mouse

Positive Controls:

WB : HEK-293 cells, HL-60 cells

Background Information

Systemic lupus erythematosus is characterized by antibodies to a variety of intracellular self-antigens, such as dsDNA and Sm, and these serve as hallmarks in the diagnosis of systemic autoimmune diseases. SNRPD1 is one Sm components of the small nuclear ribonucleoprotein complexes (snRNPs). It's a charged protein scaffold to promote snRNP assembly or strengthen snRNP-snRNP interactions through nonspecific electrostatic contacts with RNA. This antibody detects 13-16 kDa (SMD1) and 30 kDa (SMD1/SMD2 dimer form; PMID:15525645).

Notable Publications

Author	Pubmed ID	Journal	Application
Jing Wang	34098070	Pharmacol Res	IHC, WB
Li Wang	29503206	Cell Chem Biol	WB
Chowdhury Azazul Islam Al	24006944	J Proteome Res	WB

Storage

Storage:

Store at -20°C. Stable for one year after shipment.

Storage Buffer:

PBS with 0.02% sodium azide and 50% glycerol pH 7.3.

Aliquoting is unnecessary for -20°C storage

For technical support and original validation data for this product please contact:

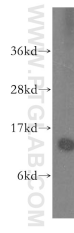
T: 4006900926

E: Proteintech-CN@ptglab.com

W: ptgcn.com

This product is exclusively available under Proteintech Group brand and is not available to purchase from any other manufacturer.

Selected Validation Data



HEK-293 cells were subjected to SDS PAGE followed by western blot with 10352-1-AP (SNRPD1 antibody) at dilution of 1:500 incubated at room temperature for 1.5 hours.