

# FAF1 Polyclonal antibody

Catalog Number: 10271-1-AP

Featured Product

6 Publications

## Basic Information

## Catalog Number:

10271-1-AP

## Size:

300 µg/ml

## Source:

Rabbit

## Isotype:

IgG

## Immunogen Catalog Number:

AG0407

## GenBank Accession Number:

BC004970

## GeneID (NCBI):

11124

## UNIPROT ID:

Q9UNN5

## Full Name:

Fas (TNFRSF6) associated factor 1

## Calculated MW:

650aa, 74 kDa

## Observed MW:

74 kDa

## Purification Method:

Antigen affinity purification

## Recommended Dilutions:

WB 1:500-1:1000

IHC 1:20-1:200

## Applications

## Tested Applications:

IHC, WB, ELISA

## Cited Applications:

WB, IF, IHC

## Species Specificity:

human, mouse, rat

## Cited Species:

human, mouse

**Note-IHC: suggested antigen retrieval with TE buffer pH 9.0; (\*) Alternatively, antigen retrieval may be performed with citrate buffer pH 6.0**

## Positive Controls:

**WB** : HeLa cells, HEK-293 cells, mouse testis tissue, mouse brain tissue, K-562 cells

**IHC** : human prostate cancer tissue,

## Background Information

FAF1 was detected most abundant in testis, slightly less abundant in skeletal muscle and heart, followed by prostate, thymus, ovary, small intestine, and colon, but not in the peripheral blood leukocytes. The N-terminal region (amino acid 1-201) including the upstream ubiquitin homology domain of hFAF1 could bind with the death domain of Fas, which mediates programmed cell death, also called apoptosis, in a number of organ systems, notably the immune and nervous systems.

## Notable Publications

Author	Pubmed ID	Journal	Application
Changsun Yu	27662363	Cell Death Differ	WB, IF
Jong Mu Kim	26164610	Neuroreport	IF
Cheng Kai K	21849551	J Neurosci	WB, IHC, IF

## Storage

## Storage:

Store at -20°C. Stable for one year after shipment.

## Storage Buffer:

PBS with 0.02% sodium azide and 50% glycerol pH 7.3.

Aliquoting is unnecessary for -20°C storage

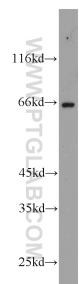
For technical support and original validation data for this product please contact:

T: 4006900926

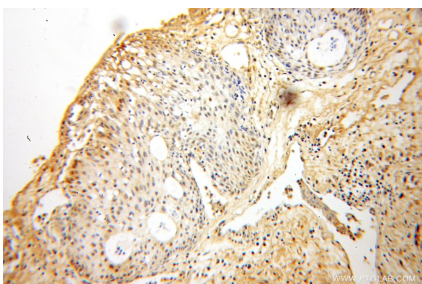
E: [Proteintech-CN@ptglab.com](mailto:Proteintech-CN@ptglab.com)W: [ptgcn.com](http://ptgcn.com)

This product is exclusively available under Proteintech Group brand and is not available to purchase from any other manufacturer.

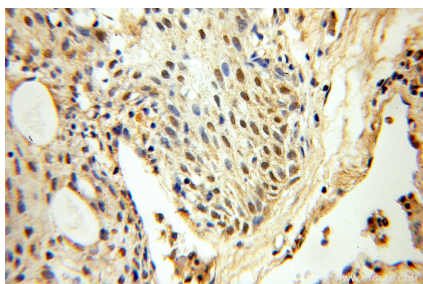
Selected Validation Data



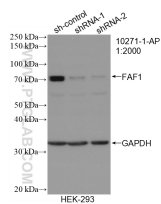
HeLa cells were subjected to SDS PAGE followed by western blot with 10271-1-AP (FAF1 antibody) at dilution of 1:1000 incubated at room temperature for 1.5 hours.



Immunohistochemical analysis of paraffin-embedded human prostate cancer using 10271-1-AP (FAF1 antibody) at dilution of 1:50 (under 10x lens).



Immunohistochemical analysis of paraffin-embedded human prostate cancer using 10271-1-AP (FAF1 antibody) at dilution of 1:50 (under 40x lens).



WB result of FAF1 antibody (10271-1-AP; 1:2000; incubated at room temperature for 1.5 hours) with sh-Control and sh-FAF1 transfected HEK-293 cells.