

For Research Use Only

LSM1 Polyclonal antibody

Catalog Number: 10259-1-AP



Basic Information

Catalog Number:

10259-1-AP

Size:

290 µg/ml

Source:

Rabbit

Isotype:

IgG

Immunogen Catalog Number:

AG0232

GenBank Accession Number:

BC001767

GeneID (NCBI):

27257

UNIPROT ID:

O15116

Full Name:

LSM1 homolog, U6 small nuclear RNA associated (*S. cerevisiae*)

Calculated MW:

15 kDa

Observed MW:

18-20 kDa

Purification Method:

Antigen affinity purification

Recommended Dilutions:

WB 1:500-1:1000

IP 0.5-4.0 µg for 1.0-3.0 mg of total protein lysate

IHC 1:20-1:200

Applications

Tested Applications:

IHC, IP, WB, ELISA

Species Specificity:

human, mouse, rat

Note-IHC: suggested antigen retrieval with TE buffer pH 9.0; (*) Alternatively, antigen retrieval may be performed with citrate buffer pH 6.0

Positive Controls:

WB: HeLa cells, mouse kidney tissue

IP: HeLa cells,

IHC: human prostate cancer tissue,

Background Information

Lsm1 is a component of the Lsm1-7 complex involved in cytoplasmic mRNA degradation. Lsm1 is a key subunit that determines the RNA-binding properties of this complex. The normal RNA-binding activity of this complex is crucial for mRNA decay and 3'-end protection in vivo and requires the intact Sm-domain of Lsm1. LSM1 localizes to cytoplasmic processing bodies (P bodies) involved in mRNA storage, processing, regulation, and degradation and is required for P-body formation. LSM1 proteins facilitate the formation of U4/U6 RNA duplexes in vitro and may play a role in U4/U6 snRNP formation.

Storage

Storage:

Store at -20°C. Stable for one year after shipment.

Storage Buffer:

PBS with 0.02% sodium azide and 50% glycerol pH 7.3.

Aliquoting is unnecessary for -20°C storage

For technical support and original validation data for this product please contact:

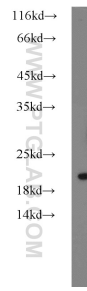
T: 4006900926

E: Proteintech-CN@ptglab.com

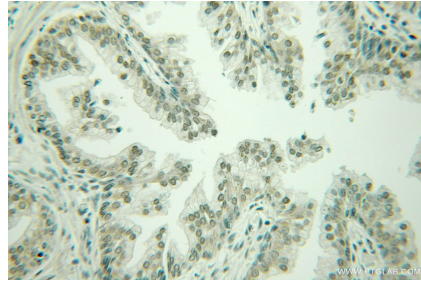
W: ptgcn.com

This product is exclusively available under Proteintech Group brand and is not available to purchase from any other manufacturer.

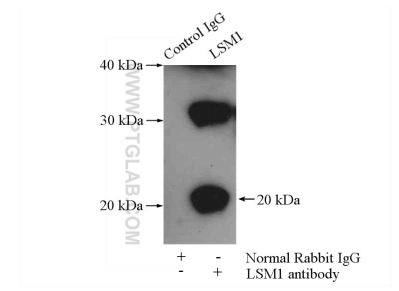
Selected Validation Data



HeLa cells were subjected to SDS PAGE followed by western blot with 10259-1-AP (LSM1 antibody) at dilution of 1:600 incubated at room temperature for 1.5 hours.



Immunohistochemical analysis of paraffin-embedded human prostate cancer using 10259-1-AP (LSM1 antibody) at dilution of 1:100 (under 10x lens).



IP result of anti-LSM1 (IP:10259-1-AP, 4ug; Detection:10259-1-AP 1:300) with HeLa cells lysate 2000ug.