

For Research Use Only

# Cdc20 Polyclonal antibody

Catalog Number: 10252-1-AP

Featured Product

43 Publications



## Basic Information

### Catalog Number:

10252-1-AP

### Concentration:

650 µg/ml

### Source:

Rabbit

### Isotype:

IgG

### Immunogen Catalog Number:

AG0295

### GenBank Accession Number:

BC001088

### GeneID (NCBI):

991

### UNIPROT ID:

Q12834

### Full Name:

cell division cycle 20 homolog (S. cerevisiae)

### Calculated MW:

55 kDa

### Observed MW:

55 kDa

### Purification Method:

Antigen affinity purification

### Recommended Dilutions:

WB 1:2000-1:14000

IP 0.5-4.0 µg for 1.0-3.0 mg of total protein lysate

IHC 1:50-1:500

IF/ICC 1:200-1:800

## Applications

### Tested Applications:

WB, IHC, IF/ICC, IP, ELISA

### Cited Applications:

WB, IHC, IF, IP, CoIP

### Species Specificity:

human

### Cited Species:

human, mouse, canine

**Note-IHC: suggested antigen retrieval with TE buffer pH 9.0; (\*) Alternatively, antigen retrieval may be performed with citrate buffer pH 6.0**

### Positive Controls:

**WB** : HEK-293 cells, HeLa cells, PC-3 cells, HL-60 cells, Jurkat cells, HepG2 cells

**IP** : Jurkat cells,

**IHC** : human breast cancer tissue, human colon cancer tissue, human urothelial carcinoma tissue

**IF/ICC** : HeLa cells,

## Background Information

Cdc20 (Cell-division cycle protein 20 homologue) is also named as p55CDC and belongs to the WD repeat CDC20/Fizzy family. Cdc20 has important functions in chromosome segregation and mitotic exit. Cdc20 is the target of the spindle assembly checkpoint (SAC) and a key cofactor of the anaphase-promoting complex or cyclosome (APC/CDC20) E3 ubiquitin ligase, thus regulating APC/C ubiquitin activity on specific substrates for their subsequent degradation by the proteasome (PMID: 28202332). The 55-kDa band corresponded to the size of Cdc20 (PMID: 22566641).

## Notable Publications

Author	Pubmed ID	Journal	Application
Yuanyuan Bai	36213833	J Oncol	WB
Xie Mengyan	36176446	Front Pharmacol	WB,IHC
Yang Gao	32932732	Int J Mol Sci	WB

## Storage

### Storage:

Store at -20°C. Stable for one year after shipment.

### Storage Buffer:

PBS with 0.02% sodium azide and 50% glycerol

Aliquoting is unnecessary for -20°C storage

For technical support and original validation data for this product please contact:

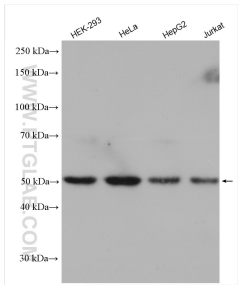
T: 4006900926

E: [Proteintech-CN@ptglab.com](mailto:Proteintech-CN@ptglab.com)

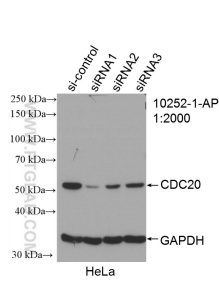
W: [ptgcn.com](http://ptgcn.com)

**This product is exclusively available under Proteintech Group brand and is not available to purchase from any other manufacturer.**

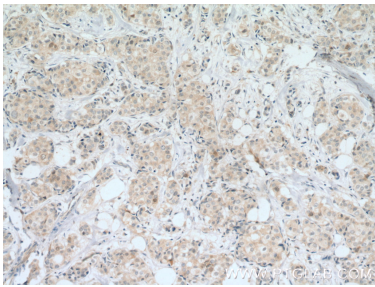
Selected Validation Data



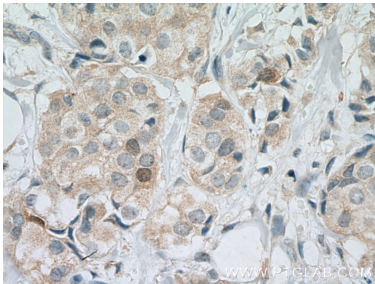
Various lysates were subjected to SDS PAGE followed by western blot with 10252-1-AP (Cdc20 antibody) at dilution of 1:7000 incubated at room temperature for 1.5 hours.



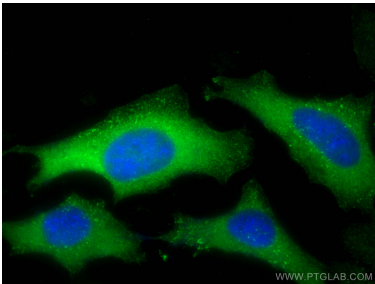
WB result of Cdc20 antibody (10252-1-AP; 1:2000; incubated at room temperature for 1.5 hours) with sh-Control and sh-Cdc20 transfected HeLa cells.



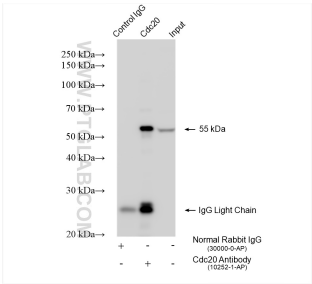
Immunohistochemical analysis of paraffin-embedded human breast cancer tissue slide using 10252-1-AP (CDC20 Antibody) at dilution of 1:200 (under 10x lens). Heat mediated antigen retrieval with Tris-EDTA buffer (pH 9.0).



Immunohistochemical analysis of paraffin-embedded human breast cancer tissue slide using 10252-1-AP (CDC20 Antibody) at dilution of 1:200 (under 40x lens). Heat mediated antigen retrieval with Tris-EDTA buffer (pH 9.0).



Immunofluorescent analysis of (-20°C Ethanol) fixed HeLa cells using Cdc20 antibody (10252-1-AP) at dilution of 1:400 and CoraLite®488-Conjugated Goat Anti-Rabbit IgG(H+L).



IP result of anti-Cdc20 (IP:10252-1-AP, 4ug; Detection:10252-1-AP 1:15000) with Jurkat cells lysate 1400 ug.