

For Research Use Only

TIP30 Polyclonal antibody, PBS Only

Catalog Number:10251-1-PBS



Basic Information

Catalog Number:

10251-1-PBS

Source:

Rabbit

Isotype:

IgG

Immunogen Catalog Number:

AG0353

GenBank Accession Number:

BC002439

GeneID (NCBI):

10553

UNIPROT ID:

Q9BUP3

Full Name:

HIV-1 Tat interactive protein 2, 30kDa

Calculated MW:

27 kDa

Observed MW:

30 kDa

Purification Method:

Antigen affinity purification

Applications

Tested Applications:

WB, IHC, IF/ICC, Indirect ELISA

Species Specificity:

human

Background Information

TIP30/CC3 was first identified and characterized as a "candidate" tumor-suppressor gene in 1997. TIP30 is involved in the control of cell apoptosis, growth, metastasis, angiogenesis, DNA repair, and tumor cell metabolism.

Storage

Storage:

Store at -80°C.

The product is shipped with ice packs. Upon receipt, store it immediately at -80°C

Storage Buffer:

PBS only, pH7.3

For technical support and original validation data for this product please contact:

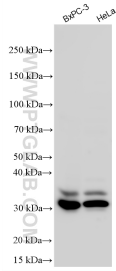
T: 4006900926

E: Proteintech-CN@ptglab.com

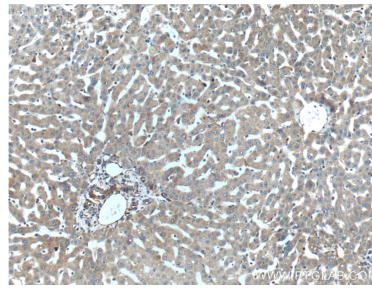
W: ptgcn.com

This product is exclusively available under Proteintech Group brand and is not available to purchase from any other manufacturer.

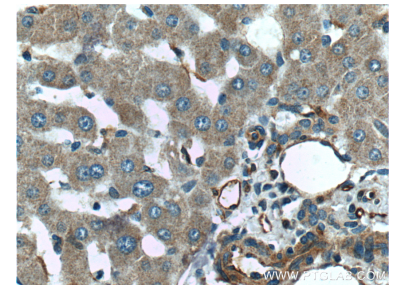
Selected Validation Data



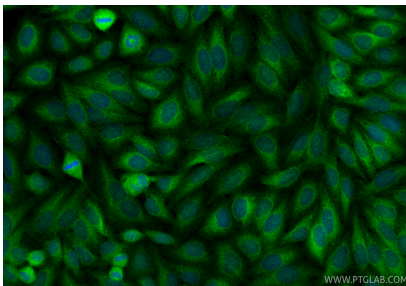
Various lysates were subjected to SDS PAGE followed by western blot with 10251-1-AP (TIP30 antibody) at dilution of 1:4000 incubated at room temperature for 1.5 hours. This data was developed using the same antibody clone with 10251-1-PBS in a different storage buffer formulation.



Immunohistochemical analysis of paraffin-embedded human liver tissue slide using 10251-1-AP (TIP30 Antibody) at dilution of 1:200 (under 10x lens). This data was developed using the same antibody clone with 10251-1-PBS in a different storage buffer formulation.



Immunohistochemical analysis of paraffin-embedded human liver tissue slide using 10251-1-AP (TIP30 Antibody) at dilution of 1:200 (under 40x lens). This data was developed using the same antibody clone with 10251-1-PBS in a different storage buffer formulation.



Immunofluorescent analysis of (4% PFA) fixed HepG2 cells using TIP30 antibody (10251-1-AP) at dilution of 1:200 and Coralite®488-Conjugated Goat Anti-Rabbit IgG(H+L) (SA00013-2). This data was developed using the same antibody clone with 10251-1-PBS in a different storage buffer formulation.