

For Research Use Only

# GNB1 Polyclonal antibody

Catalog Number:10247-2-AP

Featured Product

9 Publications



## Basic Information

Catalog Number:

10247-2-AP

Size:

600 µg/ml

Source:

Rabbit

Isotype:

IgG

Immunogen Catalog Number:

AG0313

GenBank Accession Number:

BC004186

GeneID (NCBI):

2782

UNIPROT ID:

P62873

Full Name:

guanine nucleotide binding protein (G protein), beta polypeptide 1

Calculated MW:

37 kDa

Observed MW:

37 kDa

Purification Method:

Antigen affinity purification

Recommended Dilutions:

WB 1:5000-1:50000

IHC 1:20-1:200

IF/ICC 1:50-1:500

## Applications

Tested Applications:

WB, IHC, IF/ICC, ELISA

Cited Applications:

WB, IHC, IF, IP

Species Specificity:

human, mouse, rat

Cited Species:

human, mouse

**Note-IHC: suggested antigen retrieval with TE buffer pH 9.0; (\*) Alternatively, antigen retrieval may be performed with citrate buffer pH 6.0**

Positive Controls:

WB : HeLa cells, Jurkat cells, mouse brain tissue, rat brain tissue

IHC : human pancreas cancer tissue, human gliomas tissue

IF/ICC : HepG2 cells,

## Background Information

GNB1(Guanine nucleotide-binding protein G(I)/G(S)/G(T) subunit beta-1) belongs to the WD repeat G protein beta family. The guanine nucleotide-binding proteins (G proteins) are involved as a modulator or transducer in various transmembrane signaling systems and the beta and gamma chains are required for the GTPase activity, for replacement of GDP by GTP, and for G protein-effector interaction. GNB1 can form dimers with all gamma subunits analyzed(PMID:12782285).

## Notable Publications

Author	Pubmed ID	Journal	Application
ZhiWei Hu	35192430	Bioengineered	WB
Saba LM	21185315	Neuropharmacology.	WB
Fangtao Li	34860863	PLoS Pathog	IF,IP

## Storage

Storage:

Store at -20°C. Stable for one year after shipment.

Storage Buffer:

PBS with 0.02% sodium azide and 50% glycerol pH 7.3.

Aliquoting is unnecessary for -20°C storage

For technical support and original validation data for this product please contact:

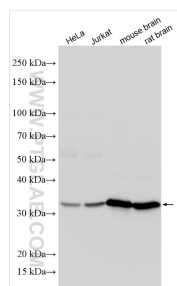
T: 4006900926

E: Proteintech-CN@ptglab.com

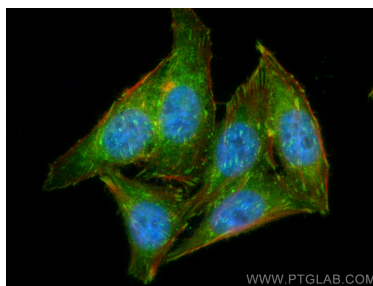
W: ptgcn.com

**This product is exclusively available under Proteintech Group brand and is not available to purchase from any other manufacturer.**

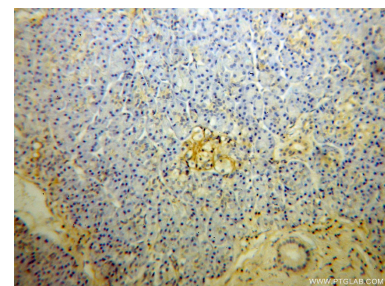
## Selected Validation Data



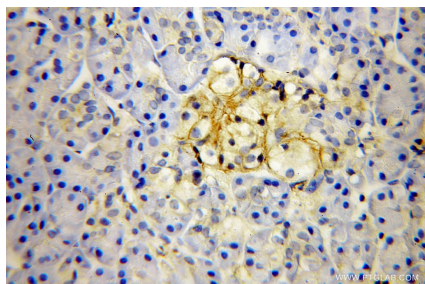
Various lysates were subjected to SDS PAGE followed by western blot with 10247-2-AP (GNB1 antibody) at dilution of 1:20000 incubated at room temperature for 1.5 hours.



Immunofluorescent analysis of (4% PFA) fixed HepG2 cells using GNB1 antibody (10247-2-AP) at dilution of 1:200 and CoraLite®488-Conjugated Goat Anti-Rabbit IgG(H+L) (SA00013-2), CL594-Phalloidin (red).



Immunohistochemical analysis of paraffin-embedded human pancreas cancer using 10247-2-AP (GNB1 antibody) at dilution of 1:100 (under 10x lens).



Immunohistochemical analysis of paraffin-embedded human pancreas cancer using 10247-2-AP (GNB1 antibody) at dilution of 1:100 (under 40x lens).