

For Research Use Only

# P21 Polyclonal antibody

Catalog Number: 10240-1-AP **1 Publications**



## Basic Information

<b>Catalog Number:</b> 10240-1-AP	<b>GenBank Accession Number:</b> BC000312	<b>Purification Method:</b> Antigen affinity purification
<b>Size:</b> 290 µg/ml	<b>GeneID (NCBI):</b> 1026	<b>Recommended Dilutions:</b> IF 1:50-1:200
<b>Source:</b> Rabbit	<b>UNIPROT ID:</b> P38936	
<b>Isotype:</b> IgG	<b>Full Name:</b> cyclin-dependent kinase inhibitor 1A (p21, Cip1)	
<b>Immunogen Catalog Number:</b> AG0308	<b>Calculated MW:</b> 21 kDa	

## Applications

<b>Tested Applications:</b> IF/ICC,ELISA	<b>Positive Controls:</b> IF : myotome of a somite at E11.5, SH-SY5Y cells
<b>Cited Applications:</b> WB	
<b>Species Specificity:</b> human, mouse, rat	
<b>Cited Species:</b> human	

## Background Information

CDKN1A (p21, CIP1, WAF1), a cyclin-dependent kinase inhibitor, is necessary for proper control of the cell cycle and premature senescence. P21 is a cyclin-dependent kinase (CDK) inhibitor that suppresses proliferation by inhibiting CDK2 and CDK1 activity at the G1/S and G2/M transitions. P21 is a major mediator of p53 to induce cell cycle arrest in G1. p21 can interact with proliferating cell nuclear antigen (PCNA), and plays a regulatory role in S phase DNA replication and DNA damage repair. P21 was reported to be specifically cleaved by CASP3-like caspases, which thus leads to a dramatic activation of CDK2, and may be instrumental in the execution of apoptosis following caspase activation. Overexpression of p21 decreases the expression levels of cell cycle progression genes and upregulates senescence-inducing genes.

## Notable Publications

Author	Pubmed ID	Journal	Application
Chen Song S	22427918	PLoS One	WB

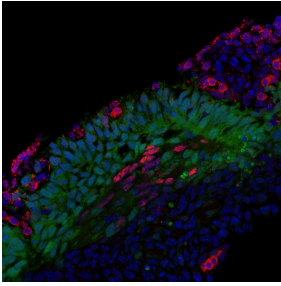
## Storage

**Storage:**  
Store at -20°C. Stable for one year after shipment.  
**Storage Buffer:**  
PBS with 0.02% sodium azide and 50% glycerol pH 7.3.  
Aliquoting is unnecessary for -20°C storage

For technical support and original validation data for this product please contact:  
T: 4006900926 E: Proteintech-CN@ptglab.com W: ptgcn.com

**This product is exclusively available under Proteintech Group brand and is not available to purchase from any other manufacturer.**

## Selected Validation Data



IF result of anti-P21(10240-1-AP) in the myotome of a somite at E11,5 by Dr. Zalc A. and Relaix F. (UPMC - UMRS 787).