

ARL2 Polyclonal antibody

Catalog Number: 10232-1-AP

Featured Product

6 Publications

Basic Information

Catalog Number:

10232-1-AP

Size:

270 µg/ml

Source:

Rabbit

Isotype:

IgG

Immunogen Catalog Number:

AG0334

GenBank Accession Number:

BC002530

GeneID (NCBI):

402

UNIPROT ID:

P36404

Full Name:

ADP-ribosylation factor-like 2

Calculated MW:

21 kDa

Observed MW:

21-25 kDa

Purification Method:

Antigen affinity purification

Recommended Dilutions:

WB 1:500-1:2000

IHC 1:20-1:200

Applications

Tested Applications:

IHC, WB, ELISA

Cited Applications:

WB, IF

Species Specificity:

human, mouse, rat

Cited Species:

human, mouse, rat

Note-IHC: suggested antigen retrieval with TE buffer pH 9.0; (*) Alternatively, antigen retrieval may be performed with citrate buffer pH 6.0

Positive Controls:

WB : mouse liver tissue, HeLa cells, mouse lung tissue, mouse spleen tissue, Y79 cells

IHC : human ovary tumor tissue,

Background Information

The ADP-ribosylation factor (ARF) genes are small GTP-binding proteins of the RAS superfamily. ADP-ribosylation factor-like 2 (ARL2) is a member of a functionally distinct group of ARF-like genes. ARL2 interacts with the tubulin-specific chaperone protein known as cofactor D. ARL2 downregulates the tubulin GAP activity of cofactor C, D, and E, and inhibits the binding of D to native tubulin.

Notable Publications

Author	Pubmed ID	Journal	Application
Chun-Xiang Zhou	32985032	J Cell Biochem	WB, IF
Hemangi Patil	25187515	J Biol Chem	WB
Chun-Xiang Zhou	28324667	Cell Cycle	WB

Storage

Storage:

Store at -20°C. Stable for one year after shipment.

Storage Buffer:

PBS with 0.02% sodium azide and 50% glycerol pH 7.3.

Aliquoting is unnecessary for -20°C storage

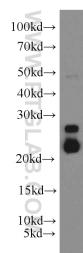
For technical support and original validation data for this product please contact:

T: 4006900926

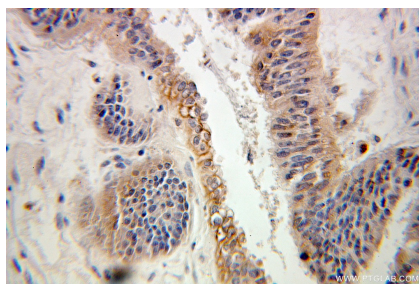
E: Proteintech-CN@ptglab.comW: ptgcn.com

This product is exclusively available under Proteintech Group brand and is not available to purchase from any other manufacturer.

Selected Validation Data



mouse liver tissue were subjected to SDS PAGE followed by western blot with 10232-1-AP (ARL2 antibody) at dilution of 1:500 incubated at room temperature for 1.5 hours.



Immunohistochemical analysis of paraffin-embedded human ovary tumor using 10232-1-AP (ARL2 antibody) at dilution of 1:100 (under 25x lens).