

For Research Use Only

CAPG Polyclonal antibody

Catalog Number: 10194-1-AP

Featured Product

24 Publications



Basic Information

Catalog Number:

10194-1-AP

Source:

Rabbit

Isotype:

IgG

Immunogen Catalog Number:

AG0248

GenBank Accession Number:

BC000728

GeneID (NCBI):

822

UNIPROT ID:

P40121

Full Name:

capping protein (actin filament),
gelsolin-like

Calculated MW:

39 kDa

Observed MW:

39-42 kDa

Purification Method:

Antigen affinity purification

Recommended Dilutions:

WB: 1:1000-1:6000

IP: 0.5-4.0 ug for 1.0-3.0 mg of total
protein lysate

IHC: 1:50-1:500

Applications

Tested Applications:

WB, IHC, IP, ELISA

Cited Applications:

WB, IHC, IF

Species Specificity:

human, mouse, rat

Cited Species:

human, mouse, rat

**Note-IHC: suggested antigen retrieval with
TE buffer pH 9.0; (*) Alternatively, antigen
retrieval may be performed with citrate
buffer pH 6.0**

Positive Controls:

WB : HeLa cells, HL-60 cells, mouse heart tissue, rat
heart tissue, rat lung tissue

IP : HeLa cells, mouse heart tissue

IHC : human prostate cancer tissue, human tonsillitis
tissue, human lung cancer tissue

Background Information

CapG (gelsolin-like actin-capping protein) is a member of the gelsolin superfamily proteins, which regulates actin filament length by capping or severing filaments. Studies have shown a role for CapG in regulating cell motility. The expression of CapG is upregulated under hypoxia and in turn increases the motility of cells. Recently it has been reported that the overexpression of CapG is associated with the progression of lung adenocarcinoma as well as lymphatic invasion status of cholangiocarcinoma, which may be used for prognosis of these tumors.
(21908955,22155129)

Notable Publications

Author	Pubmed ID	Journal	Application
Wei Wu	29113183	Oncol Lett	WB, IHC
Bin Chen	29285153	Exp Ther Med	WB
Yashuang Yang	36385596	Front Med	WB

Storage

Storage:

Store at -20°C. Stable for one year after shipment.

Storage Buffer:

PBS with 0.02% sodium azide and 50% glycerol, pH7.3

Aliquoting is unnecessary for -20°C storage

For technical support and original validation data for this product please contact:

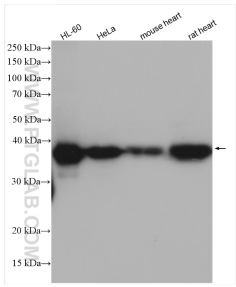
T: 4006900926

E: Proteintech-CN@ptglab.com

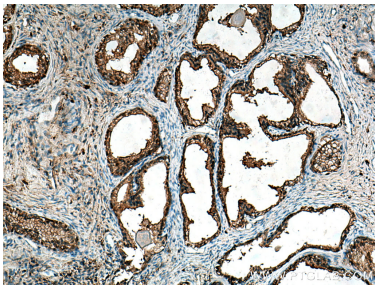
W: ptgcn.com

This product is exclusively available under Proteintech Group brand and is not available to purchase from any other manufacturer.

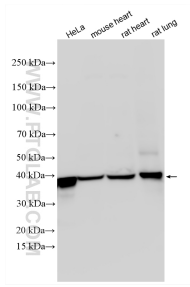
Selected Validation Data



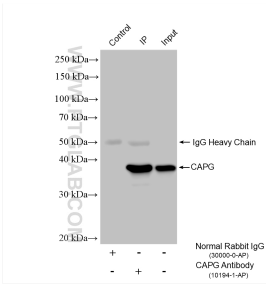
Various lysates were subjected to SDS PAGE followed by western blot with 10194-1-AP (CAPG antibody) at dilution of 1:2000 incubated at room temperature for 1.5 hours.



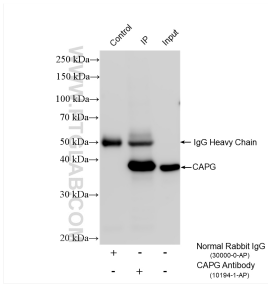
Immunohistochemical analysis of paraffin-embedded human prostate cancer tissue slide using 10194-1-AP (CAPG antibody) at dilution of 1:200 (under 10x lens). Heat mediated antigen retrieval with Tris-EDTA buffer (pH 9.0).



Various lysates were subjected to SDS PAGE followed by western blot with 10194-1-AP (CAPG antibody) at dilution of 1:3000 incubated at room temperature for 1.5 hours.



IP result of anti-CAPG (IP:10194-1-AP, 5ug; Detection:10194-1-AP 1:1000) with HeLa cells lysate 1480 ug.



IP result of anti-CAPG (IP:10194-1-AP, 4ug; Detection:10194-1-AP 1:1000) with mouse heart tissue lysate 2080 ug.