

For Research Use Only

# RAB6A Polyclonal antibody

Catalog Number: 10187-2-AP

Featured Product

5 Publications



## Basic Information

**Catalog Number:**

10187-2-AP

**Size:**

350 µg/ml

**Source:**

Rabbit

**Isotype:**

IgG

**Immunogen Catalog Number:**

AG0240

**GenBank Accession Number:**

BC003617

**GeneID (NCBI):**

5870

**UNIPROT ID:**

P20340

**Full Name:**

RAB6A, member RAS oncogene family

**Calculated MW:**

24 kDa

**Observed MW:**

24 kDa

**Purification Method:**

Antigen affinity purification

**Recommended Dilutions:**

WB 1:2000-1:16000

IP 0.5-4.0 µg for 1.0-3.0 mg of total protein lysate

IF 1:400-1:1600

## Applications

**Tested Applications:**

IF/ICC, IP, WB, ELISA

**Cited Applications:**

WB, IF

**Species Specificity:**

human, mouse, rat

**Cited Species:**

human, rat, mouse

**Positive Controls:**

WB : NIH/3T3 cells, mouse brain tissue, rat brain tissue

IP : mouse brain tissue,

IF : HeLa cells,

## Background Information

Members of the Rab subfamily of small GTPases play an important role in the regulation of intracellular transport routes. Rab6, localized to the Golgi apparatus, has been shown to be a regulator of membrane traffic from the Golgi apparatus towards the endoplasmic reticulum (ER). The expression of Rab6 is ubiquitous.

## Notable Publications

Author	Pubmed ID	Journal	Application
Xiaochao Tan	32931483	J Clin Invest	WB
Liyuan Guo	34332492	J Neuroimmunol	IF
Xinxin Zuo	33398173	Nat Struct Mol Biol	WB

## Storage

**Storage:**

Store at -20°C. Stable for one year after shipment.

**Storage Buffer:**

PBS with 0.02% sodium azide and 50% glycerol pH 7.3.

Aliquoting is unnecessary for -20°C storage

For technical support and original validation data for this product please contact:

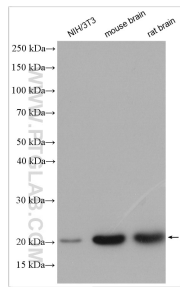
T: 4006900926

E: [Proteintech-CN@ptglab.com](mailto:Proteintech-CN@ptglab.com)

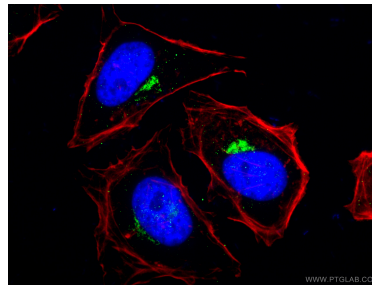
W: [ptgcn.com](http://ptgcn.com)

**This product is exclusively available under Proteintech Group brand and is not available to purchase from any other manufacturer.**

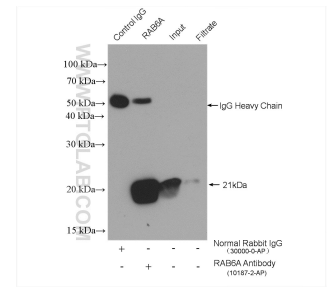
## Selected Validation Data



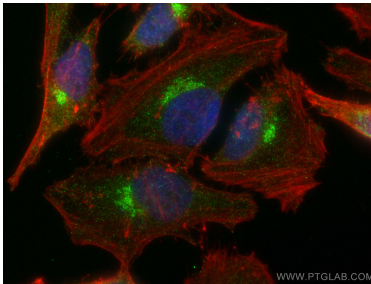
Various lysates were subjected to SDS PAGE followed by western blot with 10187-2-AP (RAB6A antibody) at dilution of 1:8000 incubated at room temperature for 1.5 hours.



Immunofluorescent analysis of (4% PFA) fixed HeLa cells using 10187-2-AP (RAB6A antibody), at dilution of 1:200 and CoraLite®488-Conjugated AffiniPure Goat Anti-Rabbit IgG(H+L). F-actin is stained using CL555-phalloidin (red) and DNA is stained by DAPI (blue).



IP result of anti-RAB6A (IP:10187-2-AP, 4ug; Detection:10187-2-AP 1:1000) with mouse brain tissue lysate 1840 ug.



Immunofluorescent analysis of (4% PFA) fixed HeLa cells using RAB6A antibody (10187-2-AP) at dilution of 1:800 and CoraLite®488-Conjugated AffiniPure Goat Anti-Rabbit IgG(H+L), CL594-phalloidin (red).