

For Research Use Only

# IMMT Polyclonal antibody

Catalog Number: 10179-1-AP

Featured Product

95 Publications



## Basic Information

### Catalog Number:

10179-1-AP

### Size:

550 ug/ml

### Source:

Rabbit

### Isotype:

IgG

### Immunogen Catalog Number:

AG0102

### GenBank Accession Number:

BC002412

### GeneID (NCBI):

10989

### UNIPROT ID:

Q16891

### Full Name:

inner membrane protein,  
mitochondrial (mitofilin)

### Calculated MW:

90 kDa

### Observed MW:

80-90 kDa

### Purification Method:

Antigen affinity purification

### Recommended Dilutions:

WB 1:5000-1:50000

IP 0.5-4.0 ug for 1.0-3.0 mg of total  
protein lysate

IHC 1:50-1:500

IF/ICC 1:50-1:500

## Applications

### Tested Applications:

WB, IHC, IF/ICC, FC (Intra), IP, ELISA

### Cited Applications:

WB, IHC, IF, IP, CoIP

### Species Specificity:

human, mouse, rat

### Cited Species:

human, mouse, rat, hamster

### Positive Controls:

**WB**: COLO 320 cells, HepG2 cells, HEK-293 cells, HeLa cells, Raji cells, mouse brain tissue, MCF-7 cells, rat brain tissue

**IP**: Raji cells,

**IHC**: human breast cancer tissue,

**IF/ICC**: HeLa cells,

**Note-IHC: suggested antigen retrieval with TE buffer pH 9.0; (\*) Alternatively, antigen retrieval may be performed with citrate buffer pH 6.0**

## Background Information

IMMT (also known as mitofilin) is an inner mitochondrial membrane protein that is preferentially expressed in heart tissue and is commonly used as the marker for mitochondria. Mitofilin is known to be a critical organizer of mitochondrial cristae morphology and is indispensable for normal mitochondrial function. Three isoforms of mitofilin exist due to the alternative splicing. All three proteins of 87kD, 89kD and 80kD can be detected in immunoblot analysis with this antibody.

## Notable Publications

Author	Pubmed ID	Journal	Application
Q E Xie	34571250	Mitochondrion	WB
Steven J Edwards	33195398	Front Mol Biosci	IF
Brendan Miller	36127429	Mol Psychiatry	WB,IP

## Storage

### Storage:

Store at -20°C. Stable for one year after shipment.

### Storage Buffer:

PBS with 0.02% sodium azide and 50% glycerol pH 7.3.

Aliquoting is unnecessary for -20°C storage

For technical support and original validation data for this product please contact:

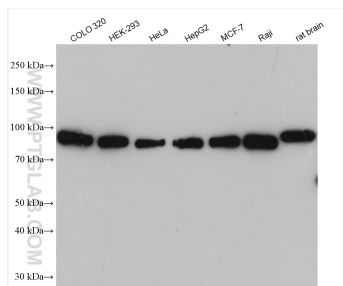
T: 4006900926

E: [Proteintech-CN@ptglab.com](mailto:Proteintech-CN@ptglab.com)

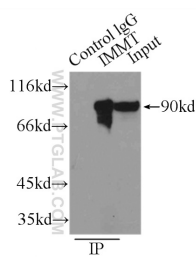
W: [ptgcn.com](http://ptgcn.com)

**This product is exclusively available under Proteintech Group brand and is not available to purchase from any other manufacturer.**

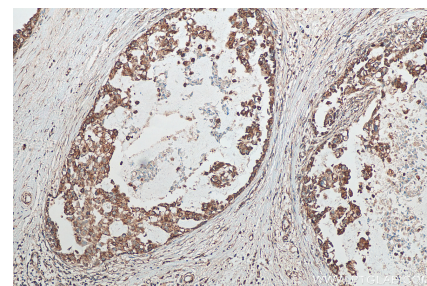
## Selected Validation Data



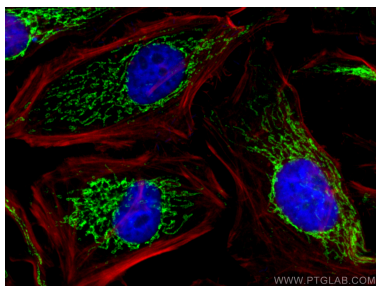
Various lysates were subjected to SDS PAGE followed by western blot with 10179-1-AP (Mitofilin antibody) at dilution of 1:15000 incubated at room temperature for 1.5 hours.



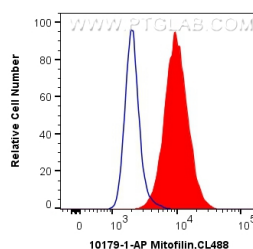
IP result of anti-Mitofilin (IP:10179-1-AP, 3ug; Detection:10179-1-AP 1:1000) with Raji cells lysate 3800ug.



Immunohistochemical analysis of paraffin-embedded human breast cancer tissue slide using 10179-1-AP (Mitofilin antibody) at dilution of 1:200 (under 10x lens). Heat mediated antigen retrieval with Tris-EDTA buffer (pH 9.0).



Immunofluorescent analysis of (4% PFA) fixed HeLa cells using Mitofilin antibody (10179-1-AP) at dilution of 1:200 and Coralite® 488-Conjugated AffiniPure Goat Anti-Rabbit IgG(H+L) (SA00013-2), CL594-phalloidin (red).



1X10<sup>6</sup> HEK-293T cells were intracellularly stained with 0.2 ug Anti-Human Mitofilin (10179-1-AP) and Coralite® 488-Conjugated AffiniPure Goat Anti-Rabbit IgG(H+L) at dilution 1:1000 (red), or 0.2 ug Control Antibody. Cells were fixed with 4% PFA and permeabilized with Flow Cytometry Perm Buffer (PF00011-C).