

For Research Use Only

LRRC1 Polyclonal antibody

Catalog Number: 10128-2-AP

Featured Product

2 Publications



Basic Information

Catalog Number:

10128-2-AP

Size:

900 ug/ml

Source:

Rabbit

Isotype:

IgG

Immunogen Catalog Number:

AG0175

GenBank Accession Number:

BC003193

GeneID (NCBI):

55227

UNIPROT ID:

Q9BTT6

Full Name:

leucine rich repeat containing 1

Calculated MW:

59 kDa

Observed MW:

59 kDa

Purification Method:

Antigen affinity purification

Recommended Dilutions:

WB 1:500-1:1000

IHC 1:200-1:800

IF/ICC 1:50-1:500

Applications

Tested Applications:

WB, IHC, IF/ICC, ELISA

Cited Applications:

WB, IHC

Species Specificity:

human, mouse, rat

Cited Species:

human, mouse, rat

Note-IHC: suggested antigen retrieval with TE buffer pH 9.0; (*) Alternatively, antigen retrieval may be performed with citrate buffer pH 6.0

Positive Controls:

WB : HEK-293 cells,

IHC : human stomach cancer tissue,

IF/ICC : HEK-293 cells,

Background Information

LRRC1 consists of 524 amino acids including 16 leucine-rich repeats and a LAP-specific domain. It has been shown to be highly expressed in several human cancers and can participate in the malignant process of cancer cells, such as hepatocellular carcinoma, breast cancer and non-small cell lung cancer. (PMID: 36370237, PMID: 37505155)

Notable Publications

Author	Pubmed ID	Journal	Application
Yake Wang	38473980	Int J Mol Sci	WB,IHC
Yao Wang	38165568	J Mol Histol	WB

Storage

Storage:

Store at -20°C. Stable for one year after shipment.

Storage Buffer:

PBS with 0.02% sodium azide and 50% glycerol pH 7.3.

Aliquoting is unnecessary for -20°C storage

For technical support and original validation data for this product please contact:

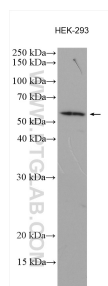
T: 4006900926

E: Proteintech-CN@ptglab.com

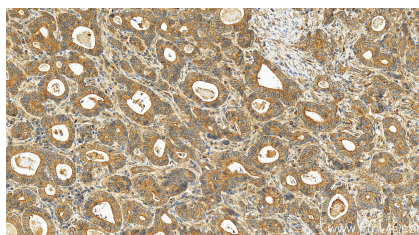
W: ptgcn.com

This product is exclusively available under Proteintech Group brand and is not available to purchase from any other manufacturer.

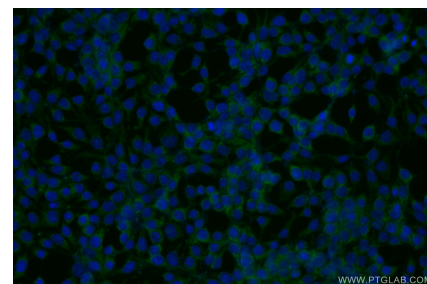
Selected Validation Data



HEK-293 cells were subjected to SDS PAGE followed by western blot with 10128-2-AP (LRRC1 antibody) at dilution of 1:600 incubated at room temperature for 1.5 hours.



Immunohistochemical analysis of paraffin-embedded human stomach cancer tissue slide using 10128-2-AP (LRRC1 antibody) at dilution of 1:400 (under 20x lens). Heat mediated antigen retrieval with Tris-EDTA buffer (pH 9.0).



Immunofluorescent analysis of (-20°C Ethanol) fixed HEK-293 cells using LRRC1 antibody (10128-2-AP) at dilution of 1:200 and CoraLite®488-Conjugated AffiniPure Goat Anti-Rabbit IgG(H+L).