

For Research Use Only

# ATG7 Polyclonal antibody

Catalog Number:10088-2-AP

Featured Product

143 Publications



## Basic Information

Catalog Number:

10088-2-AP

Concentration:

500 µg/ml

Source:

Rabbit

Isotype:

IgG

Immunogen Catalog Number:

AG0142

GenBank Accession Number:

BC000091

GeneID (NCBI):

10533

UNIPROT ID:

O95352

Full Name:

ATG7 autophagy related 7 homolog  
(S. cerevisiae)

Calculated MW:

78 kDa

Observed MW:

68-78 kDa

Purification Method:

Antigen affinity purification

Recommended Dilutions:

WB 1:500-1:3000

IP 0.5-4.0 µg for 1.0-3.0 mg of total  
protein lysate

IHC 1:50-1:500

IF/ICC 1:50-1:500

## Applications

Tested Applications:

WB, IHC, IF/ICC, IP, ELISA

Cited Applications:

WB, IHC, IF, IP, CoIP

Species Specificity:

human, mouse

Cited Species:

human, mouse, rat, pig, chicken, hamster, goat, turtle,  
prawn

**Note-IHC: suggested antigen retrieval with  
TE buffer pH 9.0; (\*) Alternatively, antigen  
retrieval may be performed with citrate  
buffer pH 6.0**

Positive Controls:

**WB** : HeLa cells, HEK-293 cells, HepG2 cells, Jurkat  
cells, NIH/3T3 cells, mouse liver tissue, THP-1 cells,  
U2OS cells

**IP** : HT-1080 cells, NIH/3T3 cells

**IHC** : human cervical cancer tissue, mouse kidney  
tissue

**IF/ICC** : HepG2 cells,

## Background Information

Atg7 is an E1-like enzyme that is specifically involved in autophagosome formation and is essential for autophagy. As an autophagic-related protein it is required for linking to Atg12, Atg5 and Atg8, which are essential for Atg conjugation and autophagosome formation. Atg7 has been reported as an important regulator of autophagy with starvation-induced or chemotherapeutic agent treatment. The high expression level of ATG7 is related to the survival of patients with breast cancer. There are several isoforms of ATG7 protein ranged from 68 kDa to 78 kDa.

## Notable Publications

Author	Pubmed ID	Journal	Application
Minfen Zhang	34520393	Aging (Albany NY)	WB
Yannan Liu	30207362	Food Funct	WB,IHC
Weiduo Hou	36358952	Biomolecules	WB

## Storage

Storage:

Store at -20°C. Stable for one year after shipment.

Storage Buffer:

PBS with 0.02% sodium azide and 50% glycerol, pH7.3

Aliquoting is unnecessary for -20°C storage

For technical support and original validation data for this product please contact:

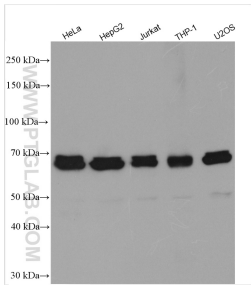
T: 4006900926

E: Proteintech-CN@ptglab.com

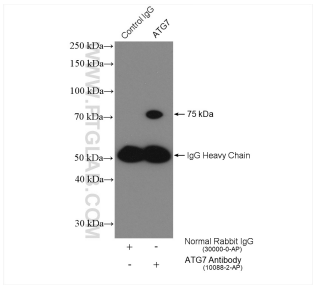
W: ptgcn.com

**This product is exclusively available under Proteintech Group brand and is not available to purchase from any other manufacturer.**

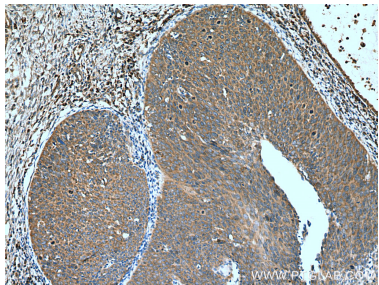
Selected Validation Data



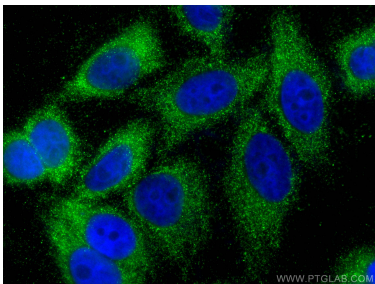
Various lysates were subjected to SDS PAGE followed by western blot with 10088-2-AP (ATG7 antibody) at dilution of 1:1500 incubated at room temperature for 1.5 hours.



IP result of anti-ATG7 (IP:10088-2-AP, 4ug; Detection:10088-2-AP 1:500) with HT-1080 cells lysate 3600 ug.



Immunohistochemical analysis of paraffin-embedded human cervical cancer tissue slide using 10088-2-AP (ATG7 antibody) at dilution of 1:200 (under 10x lens). Heat mediated antigen retrieval with Tris-EDTA buffer (pH 9.0).



Immunofluorescent analysis of (-20°C Ethanol) fixed HepG2 cells using ATG7 antibody (10088-2-AP) at dilution of 1:200 and CoraLite®488-Conjugated Goat Anti-Rabbit IgG(H+L).