

For Research Use Only

# CSTF1 Polyclonal antibody

Catalog Number: 10064-2-AP **6 Publications**



## Basic Information

**Catalog Number:**

10064-2-AP

**Size:**

900 µg/ml

**Source:**

Rabbit

**Isotype:**

IgG

**Immunogen Catalog Number:**

AG0109

**GenBank Accession Number:**

BC001011

**GeneID (NCBI):**

1477

**UNIPROT ID:**

Q05048

**Full Name:**

cleavage stimulation factor, 3' pre-RNA, subunit 1, 50kDa

**Calculated MW:**

48.3 kDa

**Observed MW:**

50 kDa

**Purification Method:**

Antigen affinity purification

**Recommended Dilutions:**

WB 1:500-1:1000

IP 0.5-4.0 µg for 1.0-3.0 mg of total protein lysate

## Applications

**Tested Applications:**

IP, WB, ELISA

**Cited Applications:**

WB

**Species Specificity:**

human, mouse, rat

**Cited Species:**

human, mouse, rat

**Positive Controls:**

WB : HeLa cells, K-562 cells

IP : NIH/3T3 cells,

## Background Information

Cleavage stimulation factor (CstF), a heterotrimeric protein with subunits of 77, 64, and 50 kD (CstF-77, -64, and -50), is a polyadenylation factor that helps to specify the site of processing. CstF recognizes the G+U-rich element, a sequence located downstream of the cleavage site. CstF-50 subunit interacts with the COOH-terminal domain of the RNAP II largest subunit (CTD). This subunit may be responsible for the interaction of CSTF with other factors to form a stable complex on the pre-mRNA, and multiple WD domains are required for protein interactions.

## Notable Publications

Author	Pubmed ID	Journal	Application
J Dai	26311342	Andrology	
Patricia Uguen	12941705	EMBO J	WB
Ziqian Min	36444304	iScience	

## Storage

**Storage:**

Store at -20°C. Stable for one year after shipment.

**Storage Buffer:**

PBS with 0.02% sodium azide and 50% glycerol pH 7.3.

Aliquoting is unnecessary for -20°C storage

For technical support and original validation data for this product please contact:

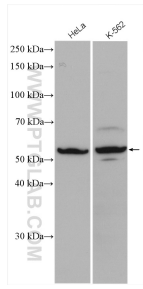
T: 4006900926

E: Proteintech-CN@ptglab.com

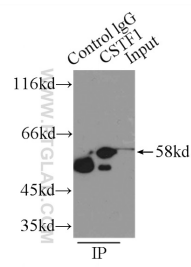
W: ptgcn.com

**This product is exclusively available under Proteintech Group brand and is not available to purchase from any other manufacturer.**

## Selected Validation Data



Various lysates were subjected to SDS PAGE followed by western blot with 10064-2-AP (CSTF1 antibody) at dilution of 1:500 incubated at room temperature for 1.5 hours.



IP result of anti-CSTF1 (IP:10064-2-AP, 2ug; Detection:10064-2-AP 1:500) with NIH/3T3 cells lysate 2500ug.