

For Research Use Only

# FKBPL Polyclonal antibody

Catalog Number: 10060-1-AP

Featured Product

24 Publications



## Basic Information

### Catalog Number:

10060-1-AP

### Source:

Rabbit

### Isotype:

IgG

### Immunogen Catalog Number:

AG0112

### GenBank Accession Number:

BC004168

### GeneID (NCBI):

63943

### UNIPROT ID:

Q9UIM3

### Full Name:

FK506 binding protein like

### Calculated MW:

349 aa, 38 kDa

### Observed MW:

42-48 kDa

### Purification Method:

Antigen affinity purification

### Recommended Dilutions:

WB: 1:1000-1:4000

IP: 0.5-4.0 ug for 1.0-3.0 mg of total protein lysate

IHC: 1:300-1:1200

FC (Intra): 0.40 ug per 10<sup>6</sup> cells in a 100 µl suspension

## Applications

### Tested Applications:

WB, IHC, FC (Intra), IP, ELISA

### Cited Applications:

WB, IHC, IF, ChIP

### Species Specificity:

human

### Cited Species:

human, mouse, rat

**Note-IHC: suggested antigen retrieval with TE buffer pH 9.0; (\*) Alternatively, antigen retrieval may be performed with citrate buffer pH 6.0**

### Positive Controls:

**WB** : HEK-293 cells, HeLa cells, human brain tissue, human testis tissue, Jurkat cells, MCF-7 cells, T-47D cells, MDA-MB-453s cells

**IP** : MCF-7 cells,

**IHC** : human breast cancer tissue, human testis tissue

**FC (Intra)** : HeLa cells,

## Background Information

FKBPL, also named as DIR1, NG7 and WISp39, has similarity to the immunophilin protein family, which plays a role in immunoregulation and basic cellular processes involving protein folding and trafficking. FKBPL levels may be a prognostic indicator and determinant of response to endocrine therapy (PMID:20103631, 15664193). It can be detected the band between 38 kDa and 48 kDa by western blot.

## Notable Publications

Author	Pubmed ID	Journal	Application
Rachel Bennett	26419658	Nanomedicine (Lond)	WB,IHC
Daniilo D. Obradović	36295491	Medicina (Kaunas)	IHC
Eoghan J Mulholland	31676385	J Control Release	WB

## Storage

### Storage:

Store at -20°C. Stable for one year after shipment.

### Storage Buffer:

PBS with 0.02% sodium azide and 50% glycerol, pH7.3

Aliquoting is unnecessary for -20°C storage

For technical support and original validation data for this product please contact:

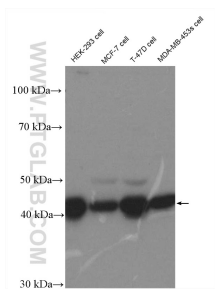
T: 4006900926

E: [Proteintech-CN@ptglab.com](mailto:Proteintech-CN@ptglab.com)

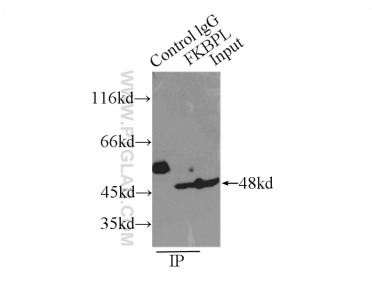
W: [ptgcn.com](http://ptgcn.com)

**This product is exclusively available under Proteintech Group brand and is not available to purchase from any other manufacturer.**

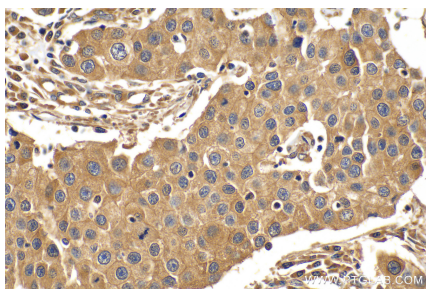
Selected Validation Data



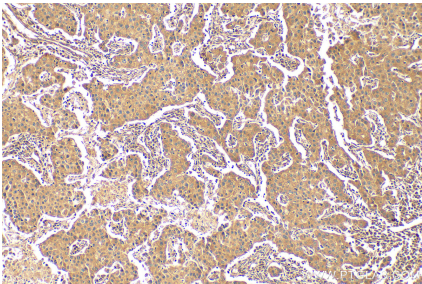
Various lysates were subjected to SDS PAGE followed by western blot with 10060-1-AP (FKBPL antibody) at dilution of 1:2000 incubated at room temperature for 1.5 hours.



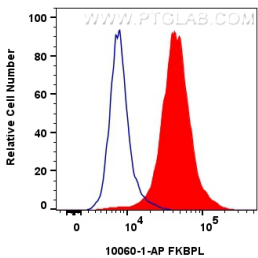
IP result of anti-FKBPL (IP:10060-1-AP, 3ug; Detection:10060-1-AP 1:800) with MCF-7 cells lysate 2500ug.



Immunohistochemical analysis of paraffin-embedded human breast cancer tissue slide using 10060-1-AP (FKBPL antibody) at dilution of 1:600 (under 40x lens). Heat mediated antigen retrieval with Tris-EDTA buffer (pH 9.0).



Immunohistochemical analysis of paraffin-embedded human breast cancer tissue slide using 10060-1-AP (FKBPL antibody) at dilution of 1:600 (under 10x lens). Heat mediated antigen retrieval with Tris-EDTA buffer (pH 9.0).



1x10<sup>6</sup> HeLa cells were intracellularly stained with 0.4 ug FKBPL Polyclonal antibody (10060-1-AP) and CoraLite®488-Conjugated AffiniPure Goat Anti-Rabbit IgG(H+L) (SA00013-2)(red), or 0.4 ug rabbit IgG isotype control (blue). Cells were fixed with 4% PFA and permeabilized with Flow Cytometry Perm Buffer.