

For Research Use Only

PTEN Polyclonal antibody

Catalog Number: 10047-1-AP

Featured Product

18 Publications



Basic Information

Catalog Number:

10047-1-AP

Concentration:

200 µg/ml

Source:

Rabbit

Isotype:

IgG

Immunogen Catalog Number:

AG0007

GenBank Accession Number:

BC005821

GeneID (NCBI):

5728

UNIPROT ID:

P60484

Full Name:

phosphatase and tensin homolog

Calculated MW:

47 kDa

Observed MW:

55 kDa

Purification Method:

Antigen affinity purification

Recommended Dilutions:

WB 1:500-1:1000

IP 0.5-4.0 µg for 1.0-3.0 mg of total protein lysate

IHC 1:50-1:500

Applications

Tested Applications:

WB, IP, IHC, ELISA

Cited Applications:

WB, IHC, IF

Species Specificity:

human

Cited Species:

human, mouse, rat

Positive Controls:

WB: MCF-7 cells, HeLa cells, HEK-293T cells, DU 145 cells

IP: HEK-293T cells,

IHC: human breast cancer tissue,

Note-IHC: suggested antigen retrieval with TE buffer pH 9.0; (*) Alternatively, antigen retrieval may be performed with citrate buffer pH 6.0

Background Information

PTEN (also designated MMAC1), products of tumor suppressor genes, are found deleted in most human gliomas. The PTEN genes are also mutated in many other tumors, such as brain, breast, kidney and prostate cancers. PTEN is a protein tyrosine phosphatase that may terminate the signaling transduction pathways mediated by PI 3-kinase/Akt. PTEN has an apparent molecular weight of 55 kDa.

Notable Publications

Author	Pubmed ID	Journal	Application
Tao Zeng	28987868	Redox Biol	WB
Tiantian Qiu	36139584	Cancers (Basel)	WB, IHC
DongHua Hou	36285295	Oxid Med Cell Longev	WB, IHC, IF

Storage

Storage:

Store at -20°C. Stable for one year after shipment.

Storage Buffer:

PBS with 0.02% sodium azide and 50% glycerol pH 7.3.

Aliquoting is unnecessary for -20°C storage

For technical support and original validation data for this product please contact:

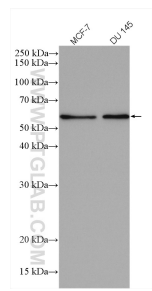
T: 4006900926

E: Proteintech-CN@ptglab.com

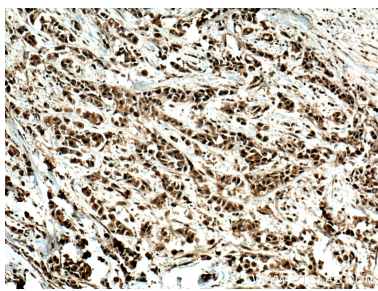
W: ptgcn.com

This product is exclusively available under Proteintech Group brand and is not available to purchase from any other manufacturer.

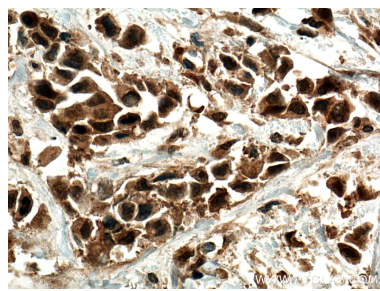
Selected Validation Data



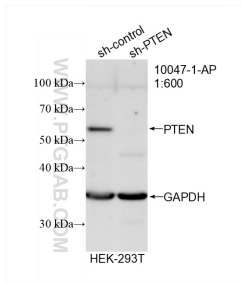
Various lysates were subjected to SDS PAGE followed by western blot with 10047-1-AP (PTEN antibody) at dilution of 1:500 incubated at room temperature for 1.5 hours.



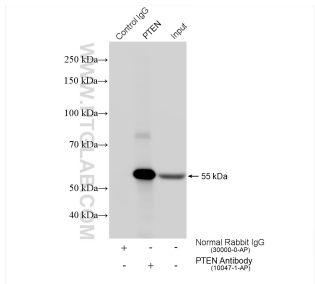
Immunohistochemical analysis of paraffin-embedded human breast cancer tissue slide using 10047-1-AP (PTEN antibody) at dilution of 1:200 (under 10x lens). Heat mediated antigen retrieval with Tris-EDTA buffer (pH 9.0).



Immunohistochemical analysis of paraffin-embedded human breast cancer tissue slide using 10047-1-AP (PTEN antibody) at dilution of 1:200 (under 40x lens). Heat mediated antigen retrieval with Tris-EDTA buffer (pH 9.0).



WB result of PTEN antibody (10047-1-AP; 1:600; incubated at room temperature for 1.5 hours) with sh-Control and sh-PTEN transfected HEK-293T cells.



IP result of anti-PTEN (IP:10047-1-AP, 4ug; Detection:10047-1-AP 1:3000) with HEK-293T cells lysate 2040 ug.