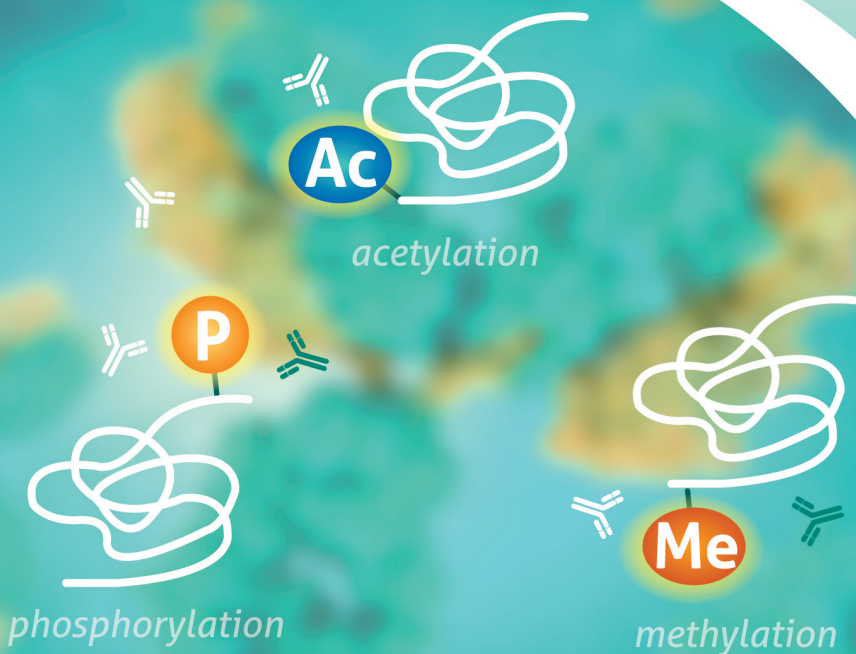


修饰性抗体

磷酸化

乙酰化

甲基化



Proteintech 高品质修饰性抗体 助力 PTMs 研究

Proteintech 以【抗体组计划】为愿景，深耕抗体领域二十四年，目前可提供 30000 余种抗体，覆盖癌症、免疫学、神经科学、细胞生物学、代谢等生命科学各个研究方向。

修饰性抗体能够特异性识别被修饰的氨基酸位点，是研究 PTMs（蛋白翻译后修饰）的重要工具，Proteintech 自主研发生产的磷酸化、乙酰化、甲基化等修饰性抗体，经过多种样本及多重实验验证，以高品质助力科学家精准探索细胞信号，再获生命科学研究新突破。



优势

高特异性

匹配真实应用场景

从源头开始严格抗原设计以及负向筛选确保高特异性

内源性免疫学实验验证及刺激样本验证确保应用数据真实

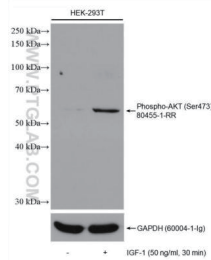
磷酸化修饰

Phospho-AKT (Ser473)

重组兔单抗

货号: 80455-1-RR

115 publications



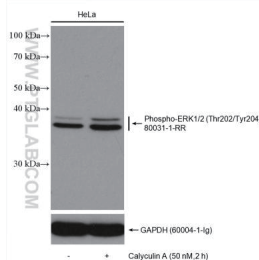
WB 检测样本: IGF-1 刺激 (右) 及未刺激 (左) 的 HEK-293T 细胞裂解液
抗体稀释比: 1:10000

Phospho-ERK1/2(Thr202/Tyr204)

重组兔单抗

货号: 80031-1-RR

35 publications



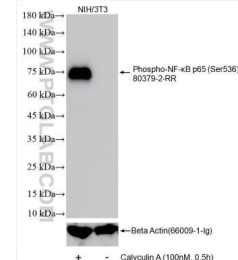
WB 检测样本: Calyculin A 刺激 (右) 及未刺激 (左) 的 HeLa 细胞裂解液
抗体稀释比: 1:5000

Phospho-NF-κB p65 (Ser536)

重组兔单抗

货号: 80379-2-RR

6 publications



WB 检测样本: Calyculin A 刺激 (左) 及未刺激 (右) 的 NIH3T3 细胞裂解液
抗体稀释比: 1:5000

乙酰化修饰

Acetyl-Histone H3 (Lys27)

重组兔单抗

货号: 82902-1-RR

1 publications



Dot blot 分析
Column 1: H3K27ac. Column 2: Unmodified H3K27.
Column 3: H3K9ac. Column 4: H3K14ac. Column 5: H3K18ac. Column 6: H3K23ac. Column 7: H3K36ac.
Column 8: H4K5ac. Column 9: H4K8ac. Column 10: H4K12ac. Column 11: H4K16ac. Column 12: H2AK5ac.
Column 13: Blank(PBS).

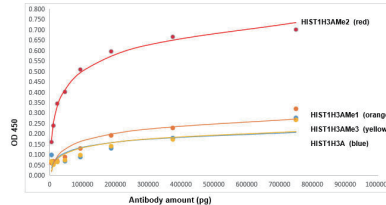
双甲基化修饰

Di-Methyl-Histone H3 (Lys36)

兔多抗

货号: 29202-1-AP

1 publications



ELISA 分析
红色线: H3T1H3AMe2(31-43aa)
橙色线: H3T1H3AMe1(31-43aa)
黄色线: H3T1H3AMe3(31-43aa)
蓝色线: H3T1H3A(31-43aa)

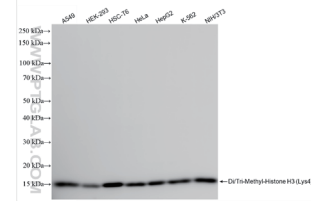
双 / 三甲基化修饰

Di/Tri-Methyl-Histone H3 (Lys4)

重组兔单抗

货号: 84908-2-RR

NEW



WB 检测样本: 不同细胞系裂解液
抗体稀释比: 1:5000

旗下品牌



抗体 · ELISA试剂盒 · 蛋白质



人源细胞表达高活性蛋白



纳米抗体相关产品



单细胞和空间多组学分析检测



表观遗传学专家

独家代理

Proteintech 修饰性抗体目录 (持续上新)

请登录官网查看适用物种、SCI 文献等更多信息

| 磷酸化修饰 | | | | 磷酸化修饰 | | | |
|---------------------------------------|------------------------------|------------|------------------------------------|--------------------------------|--|-------------------------------|--|
| 抗体靶点 | 货号 | 抗体类型 | 应用 | 抗体靶点 | 货号 | 抗体类型 | 应用 |
| Phospho-4EBP1 (Thr37) | 81812-4-RR | 重组兔单抗 | WB, ELISA | Phospho-EIF4B (Ser406) | 80059-1-RR | 重组兔单抗 | WB, IHC, ELISA |
| Phospho-ACC1 (Ser79) | 80281-2-RR | 重组兔单抗 | WB, IF/ICC, FC (Intra), ELISA | 28779-1-AP | 兔多抗 | WB, IF/ICC, ELISA | |
| | 29119-1-AP | 兔多抗 | WB, IHC, ELISA | 82550-1-RR | 重组兔单抗 | WB, ELISA | |
| Phospho-AKT (Ser473) | 80462-1-RR | 重组兔单抗 | WB, FC (Intra), ELISA | 28781-1-AP | 兔多抗 | WB, ELISA | |
| | 80455-1-RR | 重组兔单抗 | WB, IHC, IF, FC (Intra), ELISA | Phospho-EIF4E (Ser209) | 84981-1-RR | 重组兔单抗 | WB, FC (Intra), ELISA |
| | 66444-1-Ig | 小鼠单抗 | WB, IHC, IF, FC (Intra), IP, ELISA | Phospho-eNOS (Thr495) | 28939-1-AP | 兔多抗 | WB, ELISA |
| | 28731-1-AP | 兔多抗 | WB, IHC, IF, ELISA | Phospho-EPHA2 (Tyr588) | 30263-1-AP | 兔多抗 | WB, ELISA |
| Phospho-AKT (Thr308) | 81232-10-RR | 重组兔单抗 | WB, ELISA | Phospho-ERK1/2 (Thr202/Tyr204) | 80031-1-RR | 重组兔单抗 | WB, IHC, IF, FC (Intra), ELISA |
| | 29163-1-AP | 兔多抗 | WB, IHC, ELISA | 28733-1-AP | 兔多抗 | WB, IHC, IF, IP, ELISA | |
| Phospho-ALK (Tyr1604) | 30266-1-AP | 兔多抗 | WB, ELISA | Phospho-FAK (Tyr397) | 83933-1-RR | 重组兔单抗 | WB, IF/ICC, ELISA |
| Phospho-AMPK Beta 1 (Ser182) | 83924-1-RR | 重组兔单抗 | WB, ELISA | Phospho-FOXO1 (Ser319) | 28757-1-AP | 兔多抗 | WB, IF, ELISA |
| Phospho-APP (Thr668) | 28788-1-AP | 兔多抗 | WB, ELISA | Phospho-FOXO3A (Ser315) | 28755-1-AP | 兔多抗 | WB, IHC, ELISA |
| Phospho-ASK1 (Ser83) | 80072-2-RR | 重组兔单抗 | WB, ELISA | Phospho-FRS2 (Tyr436) | 31352-1-AP | 兔多抗 | WB, ELISA |
| | 28847-1-AP | 兔多抗 | WB, ELISA | Phospho-GRB10 (Ser476) | 28873-1-AP | 兔多抗 | WB, ELISA |
| Phospho-ASK1 (Ser966) | 28846-1-AP | 兔多抗 | WB, ELISA | Phospho-GSK3A (Ser21) | 28875-1-AP | 兔多抗 | WB, ELISA |
| Phospho-ATF2 (Thr71)/ATF7 (Thr53) | 28790-1-AP | 兔多抗 | WB, ELISA | Phospho-GSK3B (Ser389) | 14850-1-AP | 兔多抗 | WB, IF, ELISA |
| Phospho-ATG4B (Ser383) | 29684-1-AP | 兔多抗 | WB, ELISA | Phospho-GSK3B (Ser9) | 67558-1-Ig | 小鼠单抗 | WB, IHC, IF/ICC, ELISA |
| Phospho-BCL2 (Ser70) | 80771-2-RR | 重组兔单抗 | WB, IHC, FC (Intra), ELISA | Phospho-GSK3B (Tyr216) | 29125-1-AP | 兔多抗 | WB, ELISA |
| | 80067-1-RR | 重组兔单抗 | WB, FC (Intra), ELISA | Phospho-GYS1 (Ser641) | 28855-1-AP | 兔多抗 | WB, IF/ICC, ELISA |
| Phospho-Beta Catenin (Ser33) | 28772-1-AP | 兔多抗 | WB, ELISA | Phospho-Hamartin/TSC1 (Ser511) | 80340-1-RR | 重组兔单抗 | WB, IF, FC (Intra), ELISA |
| | Phospho-Beta Catenin (Ser37) | 28776-1-AP | 兔多抗 | WB, ELISA | Phospho-Histone H2A.X (Ser139) | 83307-2-RR | 重组兔单抗 |
| Phospho-Beta Catenin (Ser552) | 28778-1-AP | 兔多抗 | WB, IF/ICC, ELISA | 29380-1-AP | 兔多抗 | WB, IF/ICC, ELISA | |
| Phospho-Beta Catenin (Ser675) | 80084-1-RR | 重组兔单抗 | WB, IF/ICC, ELISA | Phospho-Histone H2B (Ser14) | 83811-1-RR | 重组兔单抗 | WB, ELISA |
| | 28853-1-AP | 兔多抗 | WB, IHC, IF/ICC, ELISA | Phospho-Histone H3 (Ser10) | 66863-1-Ig | 小鼠单抗 | WB, IHC, IF/ICC, IF-P, FC (Intra), ELISA |
| Phospho-Cardiac Troponin I (Ser23/24) | 85002-1-RR | 重组兔单抗 | WB, ELISA | 84739-2-RR | 重组兔单抗 | WB, FC (Intra), ELISA | |
| | 30937-1-AP | 兔多抗 | WB, ELISA | 84739-1-RR | 重组兔单抗 | WB, IF/ICC, FC (Intra), ELISA | |
| Phospho-Caspase 9 (Ser196) | 80346-1-RR | 重组兔单抗 | WB, ELISA | Phospho-HSP27 (Ser15) | 83332-3-RR | 重组兔单抗 | WB, IF/ICC, FC (Intra), ELISA |
| | 28794-1-AP | 兔多抗 | WB, ELISA | Phospho-HSP27 (Ser78) | 80046-3-RR | 重组兔单抗 | WB, ELISA |
| Phospho-Caspase 9 (Thr125) | 68136-1-Ig | 小鼠单抗 | WB, ELISA | 28900-1-AP | 兔多抗 | WB, ELISA | |
| | 28793-1-AP | 兔多抗 | WB, ELISA | Phospho-IkB Alpha (Ser32/36) | 82349-1-RR | 重组兔单抗 | WB, IHC, IF, FC (Intra), ELISA |
| Phospho-CD117/c-Kit (Tyr703) | 83925-1-RR | 重组兔单抗 | WB, ELISA | 68999-1-Ig | 小鼠单抗 | WB, ELISA | |
| | 81740-1-RR | 重组兔单抗 | WB, FC (Intra), ELISA | Phospho-IkB Beta (Thr19/Ser23) | 84403-1-RR | 重组兔单抗 | WB, FC (Intra), ELISA |
| Phospho-CHEK2 (Thr68) | 29012-1-AP | 兔多抗 | WB, ELISA | Phospho-INPL1 (Tyr986/987) | 29574-1-AP | 兔多抗 | WB, ELISA |
| | Phospho-Chk1 (Ser296) | 28805-1-AP | 兔多抗 | WB, ELISA | Phospho-INSR (Tyr1150/1151)/IGF1R (Tyr1135/1136) | 31133-1-AP | 兔多抗 |
| Phospho-Chk1 (Ser317) | 28807-1-AP | 兔多抗 | WB, ELISA | Phospho-IRF3 (Ser396) | 80519-2-RR | 重组兔单抗 | WB, FC (Intra), ELISA |
| Phospho-Chk1 (Ser345) | 28803-1-AP | 兔多抗 | WB, IF/ICC, ELISA | Phospho-JAK3 (Tyr980/981) | 29101-1-AP | 兔多抗 | WB, ELISA |
| Phospho-c-Met (Tyr1234/1235) | 30737-1-AP | 兔多抗 | WB, ELISA | Phospho-JNK (Thr183/Tyr185) | 60666-1-Ig | 小鼠单抗 | WB, IHC, ELISA |
| Phospho-c-MYC (Ser62) | 28915-1-AP | 兔多抗 | WB, ELISA | Phospho-JNK (Tyr185) | 80024-1-RR | 重组兔单抗 | WB, IHC, IF, FC (Intra), ELISA |
| Phospho-Cofilin (Ser3) | 29715-1-AP | 兔多抗 | WB, IF/ICC, ELISA | 84147-1-RR | 重组兔单抗 | WB, ELISA | |
| | 81871-1-RR | 重组兔单抗 | WB, IHC, ELISA | 28907-1-AP | 兔多抗 | WB, ELISA | |
| Phospho-CREB1 (Ser133) | 28792-1-AP | 兔多抗 | WB, IHC, IF, ELISA | Phospho-JUN (Ser63) | 80086-1-RR | 重组兔单抗 | WB, IF/ICC, FC (Intra), ELISA |
| | 80706-2-RR | 重组兔单抗 | WB, ELISA | 28891-1-AP | 兔多抗 | WB, IF/ICC, CoIP, ELISA | |
| Phospho-DLK/MAP3K12 (Thr43) | 28277-1-AP | 兔多抗 | WB, ELISA | Phospho-JUN (Thr91/93) | 81667-2-RR | 重组兔单抗 | WB, FC (Intra), ELISA |
| Phospho-eEF2K (Ser366) | 29032-1-AP | 兔多抗 | WB, ELISA | Phospho-LATS1 (Thr1079) | 28998-1-AP | 兔多抗 | WB, ELISA |
| Phospho-eEF2K (Thr57) | 30811-1-AP | 兔多抗 | WB, ELISA | Phospho-MAP2K4 (Ser257/Thr261) | 29250-1-AP | 兔多抗 | WB, ELISA |
| Phospho-EGFR (Tyr1069) | 30277-1-AP | 兔多抗 | WB, ELISA | Phospho-MAP3K1 (Thr1400) | 28844-1-AP | 兔多抗 | WB, ELISA |
| Phospho-EGFR (Tyr1092) | 30278-1-AP | 兔多抗 | WB, ELISA | Phospho-MARCKS (Ser167/170) | 29145-1-AP | 兔多抗 | WB, IF/ICC, ELISA |
| Phospho-EGFR (Tyr1197) | 84906-1-RR | 重组兔单抗 | WB, FC (Intra), ELISA | Phospho-Marcks1 (Ser93/104) | 10018-3-AP | 兔多抗 | WB, ELISA |
| Phospho-EGFR (Tyr869) | 84839-1-RR | 重组兔单抗 | WB, FC (Intra), ELISA | Phospho-MCL1 (Thr163) | 29560-1-AP | 兔多抗 | WB, ELISA |
| Phospho-EIF2AK4 (Thr899) | 82835-3-RR | 重组兔单抗 | WB, ELISA | | | | |
| Phospho-EIF2S1 (Ser51) | 68023-1-Ig | 小鼠单抗 | WB, IF/ICC, FC (Intra), ELISA | | | | |
| | 28740-1-AP | 兔多抗 | WB, IHC, ELISA | | | | |

| 磷酸化修饰 | | | |
|-------------------------------------|------------|-------|------------------------------------|
| 抗体靶点 | 货号 | 抗体类型 | 应用 |
| Phospho-MEK1 (Ser298) | 84691-1-RR | 重组兔单抗 | WB, FC (Intra), ELISA |
| | 68047-1-Ig | 小鼠单抗 | WB, ELISA |
| Phospho-MEK1 (Thr286) | 80629-2-RR | 重组兔单抗 | WB, ELISA |
| | 28933-1-AP | 兔多抗 | WB, ELISA |
| Phospho-MEK1 (Thr292) | 67873-1-Ig | 小鼠单抗 | WB, ELISA, FC (Intra) |
| | 28930-1-AP | 兔多抗 | WB, IHC, ELISA |
| Phospho-MEK1 (Thr386) | 81304-1-RR | 重组兔单抗 | WB, FC (Intra), ELISA |
| | 68015-1-Ig | 小鼠单抗 | WB, IF/ICC, ELISA |
| | 28935-1-AP | 兔多抗 | WB, ELISA |
| Phospho-MEK2 (Thr394) | 84556-1-RR | 重组兔单抗 | WB, ELISA |
| | 28955-1-AP | 兔多抗 | WB, IF, ELISA |
| Phospho-MEK6 (Ser207) | 28903-1-AP | 兔多抗 | WB, ELISA |
| Phospho-MKK7 (Ser271/Thr275) | 80357-1-RR | 重组兔单抗 | WB, ELISA |
| | 68050-1-Ig | 小鼠单抗 | WB, ELISA |
| | 29199-1-AP | 兔多抗 | WB, ELISA |
| Phospho-MLKL (Ser358) | 82090-2-RR | 重组兔单抗 | WB, ELISA |
| Phospho-MNK1 (Thr250/255) | 81398-1-RR | 重组兔单抗 | WB, ELISA |
| Phospho-MOBKL1B (Thr12) | 29027-1-AP | 兔多抗 | WB, ELISA |
| Phospho-MST1 (Thr183)/MST2 (Thr180) | 80093-1-RR | 重组兔单抗 | WB, FC (Intra), ELISA |
| | 28953-1-AP | 兔多抗 | WB, ELISA |
| Phospho-mTOR (Ser2448) | 80596-1-RR | 重组兔单抗 | WB, IF/ICC, FC (Intra), ELISA |
| | 67778-1-Ig | 小鼠单抗 | WB, IHC, IF/ICC, FC (Intra), ELISA |
| | 28881-1-AP | 兔多抗 | WB, ELISA |
| Phospho-mTOR (Ser2481) | 28879-1-AP | 兔多抗 | WB, ELISA |
| Phospho-MYL9 (Thr19/Ser20) | 82717-1-RR | 重组兔单抗 | WB, ELISA |
| | 29504-1-AP | 兔多抗 | WB, IF, FC (Intra), ELISA |
| Phospho-NDRG1 (Thr346) | 30886-1-AP | 兔多抗 | WB, ELISA |
| Phospho-Neurofibromin 2 (Ser518) | 28851-1-AP | 兔多抗 | WB, ELISA |
| Phospho-NF-κB p65 (Ser468) | 82335-1-RR | 重组兔单抗 | WB, IHC, IF, FC (Intra), ELISA |
| Phospho-NF-κB p65 (Ser536) | 80379-2-RR | 重组兔单抗 | WB, FC (Intra), ELISA |
| Phospho-NTRK1 (Tyr496) | 84976-1-RR | 重组兔单抗 | WB, ELISA |
| Phospho-p130Cas / BCAR1 (Tyr410) | 30887-1-AP | 兔多抗 | WB, ELISA |
| Phospho-p38 MAPK (Thr180/Tyr182) | 81212-2-RR | 重组兔单抗 | WB, ELISA |
| | 28796-1-AP | 兔多抗 | WB, IHC, IF/ICC, ELISA |
| Phospho-P53 (Ser15) | 80195-1-RR | 重组兔单抗 | WB, IF/ICC, FC (Intra), ELISA |
| | 67826-1-Ig | 小鼠单抗 | WB, IHC, IF/ICC, FC (Intra), ELISA |
| | 28961-1-AP | 兔多抗 | WB, IHC, IF/ICC, ELISA |
| Phospho-P53 (Ser392) | 80077-2-RR | 重组兔单抗 | WB, FC (Intra), ELISA |
| | 28963-1-AP | 兔多抗 | WB, ELISA |
| Phospho-P53 (Ser46) | 67900-1-Ig | 小鼠单抗 | WB, IHC, IF/ICC, FC (Intra), ELISA |
| | 28960-1-AP | 兔多抗 | WB, ELISA |
| Phospho-P62, SQSTM1 (Ser349) | 29503-1-AP | 兔多抗 | WB, IF, ELISA |
| Phospho-p70(S6K) (Thr229) | 81592-1-RR | 重组兔单抗 | WB, ELISA |
| | 28988-1-AP | 兔多抗 | WB, IF/ICC, ELISA |
| Phospho-p70(S6K) (Thr389) | 82373-1-RR | 重组兔单抗 | WB, ELISA |
| | 28735-1-AP | 兔多抗 | WB, IHC, ELISA |
| Phospho-p70(S6K) (Thr421/Ser424) | 29248-1-AP | 兔多抗 | WB, IF/ICC, ELISA |
| Phospho-PAK1 (Ser144)/PAK2 (Ser141) | 85044-1-RR | 重组兔单抗 | WB, ELISA |
| Phospho-Paxillin (Tyr118) | 81180-2-RR | 重组兔单抗 | WB, ELISA |

| 磷酸化修饰 | | | |
|---|------------|-------|------------------------------------|
| 抗体靶点 | 货号 | 抗体类型 | 应用 |
| Phospho-PDH E1 Alpha (Ser232) | 81491-1-RR | 重组兔单抗 | WB, FC (Intra), ELISA |
| | 29582-1-AP | 兔多抗 | WB, IF/ICC, ELISA |
| Phospho-PDH E1 Alpha (Ser293) | 29580-1-AP | 兔多抗 | WB, ELISA |
| Phospho-PDH E1 Alpha (Ser300) | 29583-1-AP | 兔多抗 | WB, IF/ICC, ELISA |
| Phospho-PDPK1 (Ser241) | 29241-1-AP | 兔多抗 | WB, ELISA |
| Phospho-PERK/EIF2AK3 (Ser719) | 60597-1-Ig | 小鼠单抗 | WB, ELISA |
| | 29546-1-AP | 兔多抗 | WB, ELISA |
| Phospho-PERK/EIF2AK3 (Thr982) | 82534-1-RR | 重组兔单抗 | WB, FC (Intra), ELISA |
| Phospho-PKC Alpha (Ser657) | 28926-1-AP | 兔多抗 | WB, IF/ICC, ELISA |
| Phospho-PKC Alpha (Thr638) | 81575-2-RR | 重组兔单抗 | WB, ELISA |
| | 29123-1-AP | 兔多抗 | WB, IF/ICC, ELISA |
| Phospho-PKC Delta (Ser359) | 29562-1-AP | 兔多抗 | WB, IF/ICC, ELISA |
| Phospho-PKC Delta (Thr507) | 29564-1-AP | 兔多抗 | WB, ELISA |
| Phospho-PKN1 (Thr774) | 29107-1-AP | 兔多抗 | WB, ELISA |
| Phospho-PLA2G4A (Ser505) | 28925-1-AP | 兔多抗 | WB, IF/ICC, ELISA |
| Phospho-PLCG1 (Ser1248) | 29676-1-AP | 兔多抗 | WB, ELISA |
| Phospho-PLCG1 (Tyr783) | 29566-1-AP | 兔多抗 | WB, ELISA |
| Phospho-PLCG2 (Tyr1217) | 84456-1-RR | 重组兔单抗 | WB, ELISA |
| | 29568-1-AP | 兔多抗 | WB, ELISA |
| Phospho-POLR2A (Ser2) | 84974-1-RR | 重组兔单抗 | WB, ELISA |
| | 30888-1-AP | 兔多抗 | WB, ELISA |
| Phospho-POLR2A (Ser5) | 84834-1-RR | 重组兔单抗 | WB, FC (Intra), ELISA |
| | 83932-1-RR | 重组兔单抗 | WB, ELISA |
| Phospho-POLR2A (Ser7) | 31139-1-AP | 兔多抗 | WB, ELISA |
| | 29874-1-AP | 兔多抗 | WB, ELISA |
| Phospho-PPP1CA (Thr320) | 29874-1-AP | 兔多抗 | WB, ELISA |
| Phospho-PRAS40 (Thr246) | 29072-1-AP | 兔多抗 | WB, ELISA |
| Phospho-PRKD1 (Ser916) | 80080-2-RR | 重组兔单抗 | WB, ELISA |
| | 28928-1-AP | 兔多抗 | WB, ELISA |
| Phospho-PTEN (Thr382/383) | 29246-1-AP | 兔多抗 | WB, ELISA |
| | 82309-1-RR | 重组兔单抗 | WB, ELISA |
| Phospho-RASGRF1 (Ser927) | 82309-1-RR | 重组兔单抗 | WB, ELISA |
| Phospho-RB1 (Ser780) | 84692-1-RR | 重组兔单抗 | WB, ELISA |
| Phospho-RB1 (Ser807/811) | 30376-1-AP | 兔多抗 | WB, ELISA |
| | 83630-1-RR | 重组兔单抗 | WB, ELISA |
| Phospho-RCC1 (Ser11) | 14444-1-AP | 兔多抗 | WB, ELISA |
| | 29117-1-AP | 兔多抗 | WB, ELISA |
| Phospho-RICTOR (Thr1135) | 29117-1-AP | 兔多抗 | WB, ELISA |
| Phospho-RIPK1 (Ser161) | 66854-1-Ig | 小鼠单抗 | WB, IHC, IF/ICC, FC (Intra), ELISA |
| Phospho-RIPK1 (Ser166) | 28252-1-AP | 兔多抗 | WB, IHC, IF, ELISA |
| | 80108-1-RR | 重组兔单抗 | WB, IHC, IF/ICC, FC (Intra), ELISA |
| | 28983-1-AP | 兔多抗 | WB, ELISA |
| Phospho-RPS6KA1 (Ser380) | 81475-1-RR | 重组兔单抗 | WB, FC (Intra), ELISA |
| | 68041-1-Ig | 小鼠单抗 | WB, IF/ICC, ELISA |
| Phospho-RPS6KA1 (Thr359/Ser363) | 29225-1-AP | 兔多抗 | WB, ELISA |
| | 67898-1-Ig | 小鼠单抗 | WB, IF/ICC, FC (Intra), ELISA |
| Phospho-S6 Ribosomal protein (Ser235) | 80130-2-RR | 重组兔单抗 | WB, IF/ICC, FC (Intra), ELISA |
| | 29223-1-AP | 兔多抗 | WB, IF, ELISA |
| Phospho-S6 Ribosomal protein (Ser235/236) | 80206-1-RR | 重组兔单抗 | WB, FC (Intra), ELISA |
| | 80575-3-RR | 重组兔单抗 | WB, ELISA |
| Phospho-S6 Ribosomal protein (Ser240/244) | 29220-1-AP | 兔多抗 | WB, ELISA |
| | 31597-1-AP | 兔多抗 | WB, ELISA |
| Phospho-SAMHD1 (Thr592) | 31597-1-AP | 兔多抗 | WB, ELISA |
| Phospho-SH3PX2B (Ser291) | 84563-1-RR | 重组兔单抗 | WB, ELISA |
| Phospho-SMAD1 (Ser187) | 28865-1-AP | 兔多抗 | WB, ELISA |

| 磷酸化修饰 | | | |
|---|-------------|-------|-------------------------------|
| 抗体靶点 | 货号 | 抗体类型 | 应用 |
| Phospho-SMAD1 (Ser195) | 80257-1-RR | 重组兔单抗 | WB, ELISA |
| Phospho-SMAD1 (Ser206) | 28893-1-AP | 兔多抗 | WB, ELISA |
| Phospho-SMAD1 (Ser214) | 81433-1-RR | 重组兔单抗 | WB, ELISA |
| | 28895-1-AP | 兔多抗 | WB, ELISA |
| Phospho-SMAD2 (Ser465/467)/SMAD3 (Ser423/425) | 80427-2-RR | 重组兔单抗 | WB, FC (Intra), ELISA |
| Phospho-SMAD9 (Ser465/467) | 80144-2-RR | 重组兔单抗 | WB, ELISA |
| Phospho-SPHK1 (Ser225) | 19561-1-AP | 兔多抗 | WB, IHC, IF, ELISA |
| Phospho-STAT1 (Ser727) | 80683-7-RR | 重组兔单抗 | WB, ELISA |
| | 28977-1-AP | 兔多抗 | WB, IF/ICC, ELISA |
| Phospho-STAT1 (Tyr701) | 82674-10-RR | 重组兔单抗 | WB, FC (Intra), ELISA |
| | 28979-1-AP | 兔多抗 | WB, IF/ICC, FC (Intra), ELISA |
| Phospho-STAT3 (Ser727) | 80199-2-RR | 重组兔单抗 | WB, FC (Intra), ELISA |
| | 60479-1-Ig | 小鼠单抗 | WB, IF/ICC, FC (Intra), ELISA |
| | 28945-1-AP | 兔多抗 | WB, ELISA |
| Phospho-STAT5A (Ser726)/STAT5B (Ser731) | 80138-2-RR | 重组兔单抗 | WB, IF/ICC, FC (Intra), ELISA |
| | 28951-1-AP | 兔多抗 | WB, ELISA |
| Phospho-STAT5A (Tyr694)/STAT5B (Tyr699) | 80115-1-RR | 重组兔单抗 | WB, IHC, FC (Intra), ELISA |
| | 68000-1-Ig | 小鼠单抗 | WB, FC (Intra), ELISA |
| | 28949-1-AP | 兔多抗 | WB, FC (Intra), ELISA |
| Phospho-STK11/LKB1 (Thr189) | 80127-1-RR | 重组兔单抗 | WB, IF/ICC, FC (Intra), ELISA |
| | 28965-1-AP | 兔多抗 | WB, ELISA |
| Phospho-SYK (Tyr323) | 83331-1-RR | 重组兔单抗 | WB, IF/ICC, ELISA |
| Phospho-TAK1 (Ser439) | 30895-1-AP | 兔多抗 | WB, ELISA |
| Phospho-TAK1 (Thr187) | 81785-1-RR | 重组兔单抗 | WB, FC (Intra), ELISA |
| | 28958-1-AP | 兔多抗 | WB, ELISA |
| Phospho-TAU (Ser202/Thr205) | 82568-1-RR | 重组兔单抗 | WB, ELISA |
| Phospho-TAU (Ser404) | 81383-1-RR | 重组兔单抗 | WB, ELISA |
| Phospho-TAU (Thr181) | 28866-1-AP | 兔多抗 | WB, IHC, IF, ELISA |
| Phospho-TAU (Thr231) | 80101-7-RR | 重组兔单抗 | WB, FC (Intra), ELISA |
| Phospho-TBC1D1 (Ser660) | 81363-2-RR | 重组兔单抗 | WB, ELISA |
| | 29034-1-AP | 兔多抗 | WB, ELISA |
| Phospho-TBC1D1 (Ser707) | 29068-1-AP | 兔多抗 | WB, ELISA |
| Phospho-TBK1 (Ser172) | 82382-2-RR | 重组兔单抗 | WB, ELISA |
| Phospho-TDP43 (Ser403/404) | 66079-1-Ig | 小鼠单抗 | WB, IHC, IF, ELISA |
| Phospho-TDP43 (Ser409/410) | 80007-1-RR | 重组兔单抗 | WB, IHC, IF, ELISA |
| | 66318-1-Ig | 小鼠单抗 | WB, IHC, IF, ELISA |
| | 22309-1-AP | 兔多抗 | WB, IHC, IF, IP, ELISA |
| Phospho-TSC2 (Thr1462) | 80698-1-RR | 重组兔单抗 | WB, ELISA |
| | 29000-1-AP | 兔多抗 | WB, ELISA |
| Phospho-ULK1 (Ser467) | 30005-1-AP | 兔多抗 | WB, ELISA |
| Phospho-ULK1 (Ser556) | 80218-1-RR | 重组兔单抗 | WB, IHC, FC (Intra), ELISA |
| Phospho-ULK1 (Thr468) | 29006-1-AP | 兔多抗 | WB, IF/ICC, ELISA |
| Phospho-VPS34 (Thr159) | 29675-1-AP | 兔多抗 | WB, ELISA |
| Phospho-XIAP (Ser87) | 28791-1-AP | 兔多抗 | WB, ELISA |
| Phospho-YAP1 (Ser127) | 80694-2-RR | 重组兔单抗 | WB, FC (Intra), ELISA |
| Phospho-YAP1 (Ser397) | 29018-1-AP | 兔多抗 | WB, IHC, IF, ELISA |

| 乙酰化修饰 | | | |
|-----------------------------|------------|-------|---|
| 抗体靶点 | 货号 | 抗体类型 | 应用 |
| Pan Acetylation | 66289-1-Ig | 小鼠单抗 | WB, IHC, IF/ICC, IP, CoIP, ELISA, Acetylation assay |
| Acetyl-Tubulin (Lys40) | 66200-1-Ig | 小鼠单抗 | WB, IHC, IF/ICC, ELISA |
| | 83041-1-RR | 重组兔单抗 | WB, IHC, IF/ICC, Dot Blot, ELISA |
| Acetyl-Histone H2A (Lys9) | 82823-2-RR | 重组兔单抗 | WB, Dot Blot, ELISA |
| | 84551-1-RR | 重组兔单抗 | WB, IF/ICC, Dot Blot, ELISA |
| Acetyl-Histone H2B (Lys120) | 84446-2-RR | 重组兔单抗 | IF/ICC, Dot Blot, ELISA |
| | 84446-1-RR | 重组兔单抗 | WB, IF/ICC, Dot Blot, ELISA |
| Acetyl-Histone H2B (Lys16) | 84549-1-RR | 重组兔单抗 | WB, IF/ICC, Dot Blot, ELISA |
| Acetyl-Histone H2B (Lys20) | 83171-4-RR | 重组兔单抗 | WB, IF/ICC, ELISA |
| Acetyl-Histone H2B (Lys5) | 82832-1-RR | 重组兔单抗 | WB, Dot Blot, ELISA |
| Acetyl-Histone H3 (Lys18) | 82838-2-RR | 重组兔单抗 | IHC, IF/ICC, Dot Blot, ELISA |
| Acetyl-Histone H3 (Lys23) | 82902-1-RR | 重组兔单抗 | WB, IHC, IF/ICC, Dot Blot, ELISA |
| Acetyl-Histone H3 (Lys27) | 84831-1-RR | 重组兔单抗 | WB, IF/ICC, Dot Blot, ELISA |
| Acetyl-Histone H3 (Lys4) | 84543-1-RR | 重组兔单抗 | WB, IF/ICC, Dot Blot, ELISA |
| | 29133-1-AP | 兔多抗 | WB, IHC, ELISA |
| Acetyl-Histone H3 (Lys9) | 83095-1-RR | 重组兔单抗 | WB, IHC, IF/ICC, Dot Blot, ELISA |
| Acetyl-Histone H4 (Lys12) | | | |

| 甲基化修饰 | | | |
|----------------------------------|------------|-------|---|
| 抗体靶点 | 货号 | 抗体类型 | 应用 |
| Mono-Methyl-Histone H3 (Lys36) | 82825-2-RR | 重组兔单抗 | WB, IF/ICC, FC (Intra), Dot Blot, ELISA |
| Mono-Methyl-Histone H3 (Lys4) | 84740-1-RR | 重组兔单抗 | WB, Dot Blot, ELISA |
| Mono-Methyl-Histone H3 (Lys9) | 82821-6-RR | 重组兔单抗 | WB, Dot Blot, ELISA |
| Mono/Di-Methyl-Histone H3 (Lys9) | 80219-1-RR | 重组兔单抗 | WB, IF/ICC, ELISA |
| | 68825-1-Ig | 小鼠单抗 | WB, ELISA |
| Di-Methyl-Histone H3 (Arg2) | 84702-1-RR | 重组兔单抗 | IF/ICC, FC (Intra), Dot Blot, ELISA |
| Di-Methyl-Histone H3 (Lys36) | 29202-1-AP | 兔多抗 | WB, ELISA |
| Di/Tri-Methyl-Histone H3 (Lys36) | 84329-1-RR | 重组兔单抗 | WB, IF/ICC, Dot Blot, ELISA |
| Di/Tri-Methyl-Histone H3 (Lys4) | 84908-2-RR | 重组兔单抗 | WB, IHC, IF/ICC, Dot Blot, ELISA |
| Di-Methyl-Histone H4 (Arg3) | 82859-1-RR | 重组兔单抗 | WB, Dot Blot, ELISA |

扫码查看更多修饰性抗体



表观遗传学研究相关修饰抗体

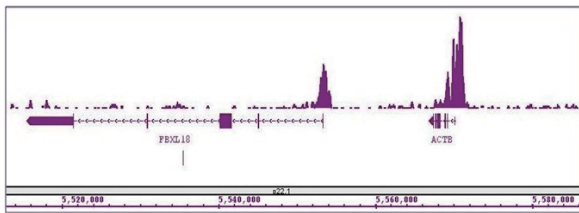
靶标齐全：覆盖组蛋白、DNA 修饰、RNA 修饰等。

多应用验证：ChIP、ChIP-Seq、CUT&Tag、CUT&RUN、Western Blot、IF、ICC、Dot Blot、IP、IHC、ELISA 等。

芯片验证：自主研发的 MODified™ Histone Peptide Array (组蛋白修饰多肽芯片) 检测组蛋白修饰抗体。

Histone H3K4me3 小鼠单抗

货号：61379



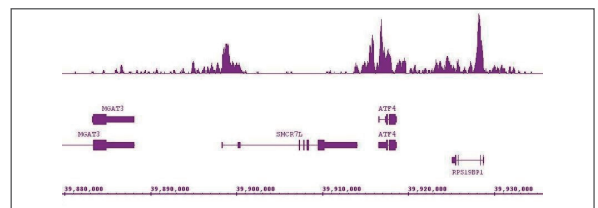
ChIP-seq 分析

样本：人髓母细胞瘤细胞系染色质

使用 ChIP-IT® 高灵敏度试剂盒 (Cat No. 53040) 进行 ChIP, 在 Illumina HiSeq 上对 ChIP DNA 进行测序, 绘制了 600 万个序列标签, 确定了 7 号染色体上的 H3K4me3 结合位点。

Histone H3K9ac 大鼠单抗

货号：61663



ChIP-seq 分析

样本：人髓母细胞瘤细胞系染色质

使用 ChIP-IT® 高灵敏度试剂盒 (Cat No. 53040) 进行 ChIP, 在 Illumina HiSeq 上对 ChIP DNA 进行测序, 绘制了 600 万个序列标签, 确定了 22 号染色体上的 H3K9ac 结合位点。

表观修饰抗体目录 (部分)

| 靶标 | 抗体靶标 | 货号 | 靶标 | 抗体靶标 | 货号 | 靶标 | 抗体靶标 | 货号 |
|-------------|-------------------------------------|---------------------|------------|--------------------------------------|-----------------|--------------------------------|---------------------------------------|-------|
| Histone H1 | Histone H1.5S17ph | 61107 | Histone H3 | Histone H3K36me0 | 65111 | Histone H4 | Histone H4K20ac | 61531 |
| Histone H2A | Pht1 / Histone H2A.Zac (pan-acetyl) | 39642 | | Histone H3K36me1 | 61351 | | Histone H4K20me1 | 39727 |
| | Histone H2A.XS139ph | 91313 | | Histone H3K36me2 | 61019 | | Histone H4K20me2 | 61533 |
| | Histone H2A.XY142ph | 61617 | | Histone H3K36me3 | 61021 | | Histone H4K20me3 | 39671 |
| | Histone H2AK119ub | 65697 | | Histone H3K37ac | 61587 | | Histone H4K5ac | 61523 |
| | Histone H2AQ104me1 | 61605 | | Histone H3K4ac | 61809 | | Histone H4K8ac | 61525 |
| | Histone H2AT120ph | 61195 | | Histone H3K4K9K18 (pan-biotinylated) | 61391 | | Histone H4K8K12K16 (pan-biotinylated) | 61393 |
| Histone H2B | Histone H2BK120ub1 | 39623 | | Histone H3K4me1 | 39635 | | Histone H4R3me2a (asymmetric) | 39705 |
| | Histone H2BK12ac | 39669 | | Histone H3K4me2 | 39679 | | Histone H4R3me2s (symmetric) | 61187 |
| | Histone H2BK15ac | 61321 | | Histone H3K4me3 | 61379 | | RNA pol II CTD monomethyl Lys7 | 65691 |
| | Histone H2BK5me1 | 61439 | | Histone H3K56ac | 61061 | RNA pol II CTD phospho Ser2 | 61699 | |
| | Histone H2BS14ph | 61011 | | Histone H3K79me1 | 39921 | RNA pol II CTD phospho Ser5 | 61085 | |
| | Histone H3.1S28ph | 61697 | | Histone H3K79me2 | 39923 | RNA pol II CTD phospho Ser7 | 61087 | |
| Histone H3 | Histone H3.3K27M | 61803 | | Histone H3K9ac | 61663 | RNA pol II CTD phospho Thr4 | 61361 | |
| | Histone H3.3S31ph | 39637 | | Histone H3K9me0 | 61399 | RNA pol II CTD phospho Tyr1 | 61383 | |
| | Histone H3.cs1 | 39573 | | Histone H3K9me1 | 39681 | RNA pol II CTD Ser2ph / Ser5ph | 61665 | |
| | Histone H3ac (pan-acetyl) | 61637 | | Histone H3K9me2 | 39683 | DNA 修饰 | 3-Methylcytosine (3-mC) | 61111 |
| | Histone H3K14ac | 65701 | | Histone H3K9me3 | 61013 | | 5-Carboxylcytosine (5-caC) | 61229 |
| | Histone H3K14bz | 39303 | | Histone H3R17me2a (asymmetric) | 39709 | | 5-Formylcytosine (5-fC) | 61227 |
| | Histone H3K14me1 | 61509 | | Histone H3R17me2aK18ac | 61613 | | 5-Hydroxymethylcytosine (5-hmC) | 39999 |
| | Histone H3K14me3 | 61549 | | Histone H3R8me1 | 39673 | | 5-mCpA | 61783 |
| | Histone H3K18ac | 39755 | | Histone H3R8me2a (asymmetric) | 39651 | | 5-Methylcytosine (5-mC) | 61479 |
| | Histone H3 | Histone H3K18me1 | | 39667 | Histone H3S10ph | 61623 | | |
| | | Histone H3K23ac | | 39131 | Histone H3S28ph | 61695 | | |
| | | Histone H3K23me2 | | 39653 | Histone H3T11ph | 61197 | | |
| | | Histone H3K23me3 | | 61499 | Histone H3T32ph | 61777 | | |
| | | Histone H3K23pr | | 61397 | Histone H3T45ph | 39737 | | |
| | | Histone H3K27ac | | 39685 | Histone H4 | Histone H4ac (pan-acetyl) | 39925 | |
| | | Histone H3K27me1 | 61015 | Histone H4H18ph | | 61413 | | |
| | | Histone H3K27me2 | 61435 | Histone H4K12ac | | 61527 | | |
| | | Histone H3K27me2me3 | 39536 | Histone H4K16ac | | 61529 | | |
| | | Histone H3K27me3 | 61017 | | | | | |
| | | Histone H3K36ac | 39379 | | | | | |

扫码查看更多
表观修饰性抗体

