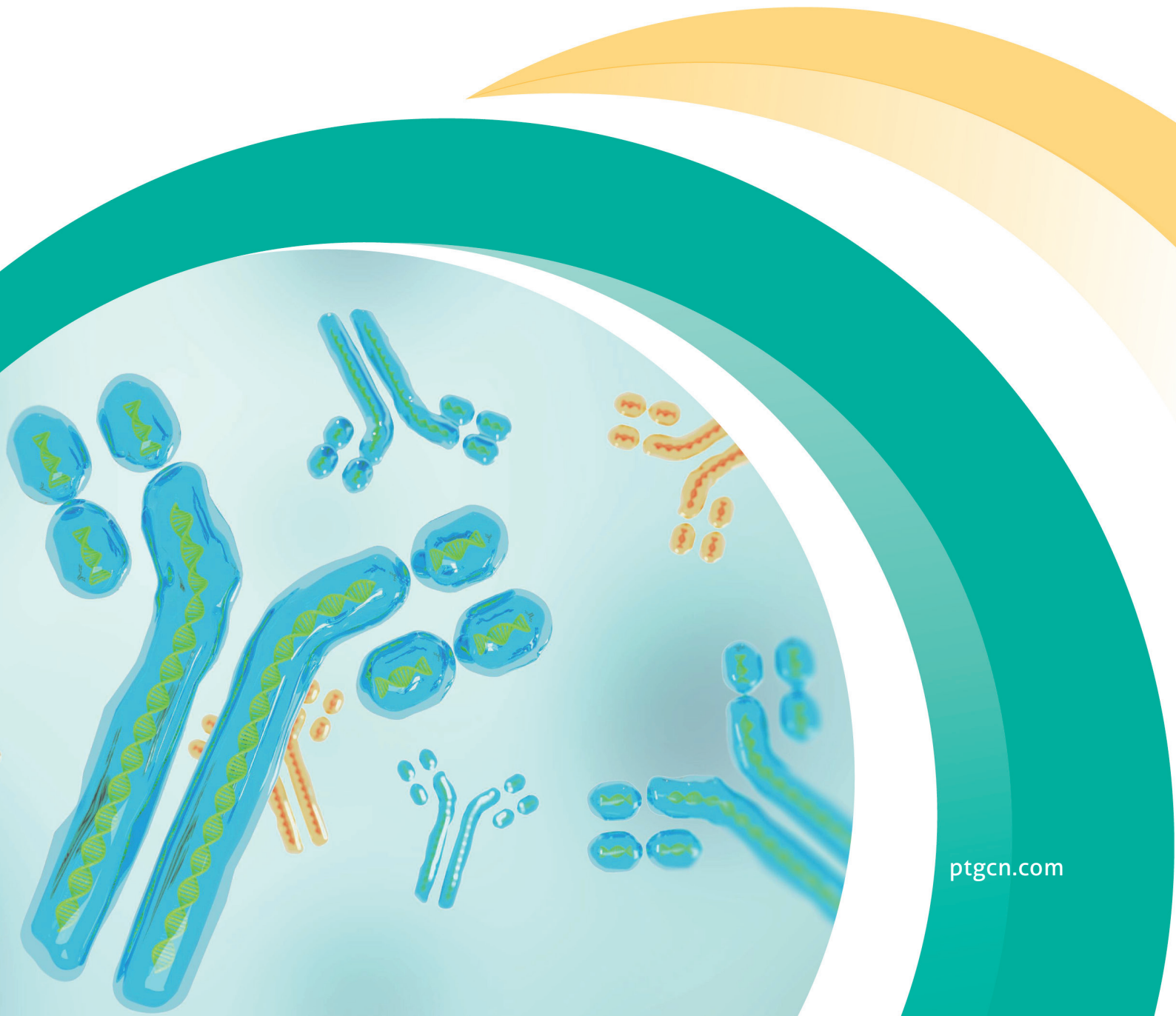


Uni-rAb™ 重组抗体

重组兔单抗

重组兔多抗

重组流式抗体





www.ptgcn.com



搜索一下

CONTENTS

目录

公司介绍	4
Uni-rAb™ 重组兔单抗	6
内参标签	8
细胞器及亚细胞标志物	9
细胞死亡	10
肿瘤	11
免疫学	12
信号通路	13
细胞生物学	14
神经生物学	15
心血管	16
内分泌与代谢	17
表观遗传学	18
修饰性重组兔单抗	19
直标重组兔单抗	20
Multi-rAb® 重组兔多抗	21
重组流式抗体	22
FcZero-rAb® 新型骨架重组流式抗体	23
Uni-rAb™ 传统骨架重组流式抗体	24
PBS-only 级重组抗体	26
重组抗体对	28

沉淀二十年，助力医药开发

Proteintech 于 2001 年在美国芝加哥创立，是一家深度服务于生命科学研究及医学诊断领域的生物公司。其全球四大研发生产中心可提供抗体、重组蛋白、ELISA 试剂盒、实验试剂及高品质 CRO 技术服务；目前已获得 10000+ 企业及科研院所的认可，高效助力全球生命科学及医学诊断领域取得突破性成果。

全球四大研发中心

- I 美国芝加哥研发生产中心
- II 美国圣地亚哥研发生产中心
- III 中国武汉研发生产中心
- IV 德国慕尼黑研发生产中心



全球 10000+ 企业及院所的认可

- 生物技术公司
- 体外诊断公司
- 创新药公司
- 疫苗公司
- 生物试剂公司
- CXO公司
- 医美及化妆品公司
- 科研院所

营销网络覆盖全球快速响应

- 七大分公司及库存基地
- 1-3天到货周期
- 提供产品定制服务
- 24小时专业技术支持

质量管理体系认证

GMP 级别细胞因子：
严格执行 GMP 标准及
GMP 质量管理体系



免疫学研究生物试剂



抗体

- 兔多抗 / 小鼠单抗 / 羊驼纳米抗体
- 重组兔单抗 / 重组流式抗体
- 直标抗体 / 中和抗体 / 抗体组合
- 重组二抗 / 病理诊断抗体 / 单细胞组学
- PBS-only 级别系列 / 抗体对



试剂盒·Kits

- Speedy™ 一步法 ELISA 试剂盒
- 双抗夹心 ELISA 试剂盒
- ELISA 抗体对套装 / 抗体对
- Active Motif® 表观研究试剂盒



重组蛋白

- Humankine® 天然活性蛋白
- HEK293/CHO 表达真核重组蛋白
- E.coli 表达重组蛋白
- Active Motif® 表观药物开发重组蛋白



实验试剂

- WB/IP/IHC/IF/FC 等实验全套试剂
- 血清 / 培养基 / 冻存液 / 细胞活性检测
- 小分子化合物

CRO 技术服务



全人源抗体开发

- 人单个 B 细胞和浆 B 细胞抗体发现
- 传染疾病, 自身免疫性疾病, 恶性肿瘤和其他人类疾病
- 与具有资质的机构和企业合作开发



抗体药物开发

- 小鼠和兔抗体发现平台主要为抗体药物服务
- TCRm 抗体, 抗体内化, 抗体片段, 抗体人源化
- 表位作图, 亲和力排序, 亲和力测定, EC50, IC50, 交叉结合



诊断及研究抗体开发

- 兔和羊抗体发现平台主要为学术研究和诊断检测
- 小分子, 修饰性抗体, 抗独特性抗体
- 抗体对, IHC, WB, FC



抗体生产服务

- 高通量重组抗体生产
- 大规模重组抗体生产

ABCE™ 单个 B 细胞抗体发现技术平台

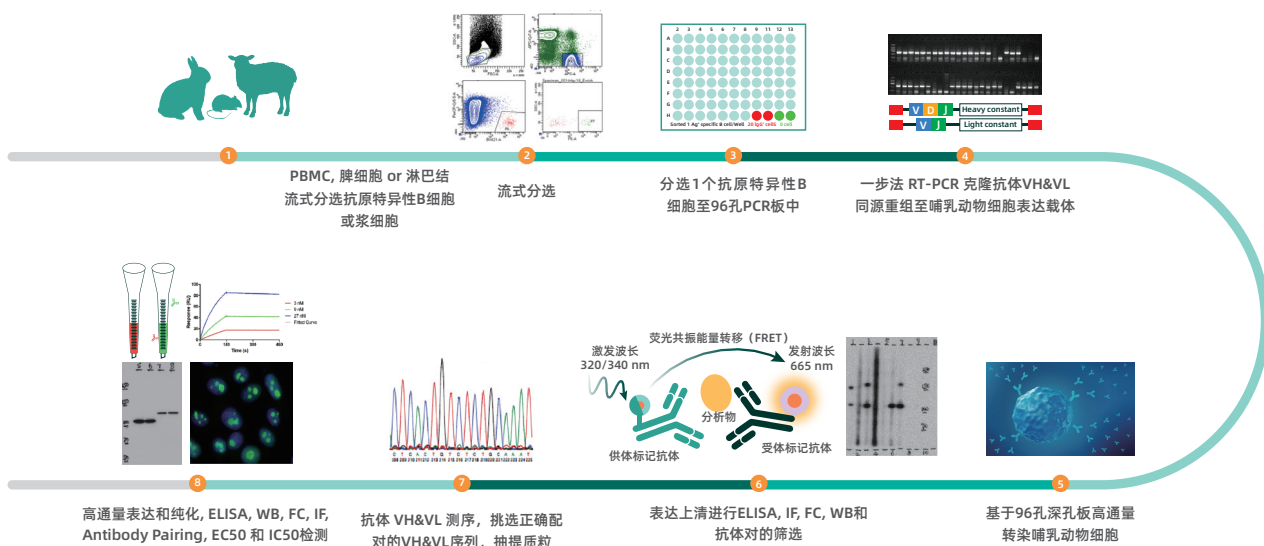
Uni-rAb™ 系列重组抗体是 Proteintech 最新一代抗体产品，基于 ABCE™ (Antigen-Specific B-Cell Cloning & Engineering) 单个 B 细胞抗体发现技术平台而开发。该平台通过将不同物种来源的特异性 B 细胞中的抗体重链和轻链基因克隆至拥有自主知识产权的高表达哺乳动物细胞载体中，在体外实现重组单克隆抗体的稳定高表达。



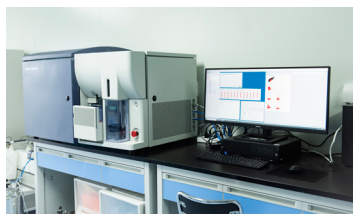
*1 高通量表达上清初筛、高通量纯化抗体二次筛查、抗体上线前检测。

*2 Protein A 和混合模式阳或阴离子交换介质两步精纯工艺，确保抗体高纯度。

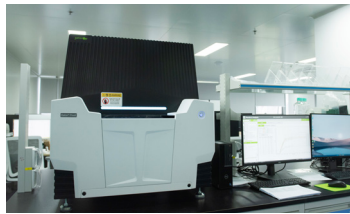
*3 可开发全长抗体、融合抗体、嵌合抗体和双特异性抗体，Fab、scFv、sdAb 等抗体片段。



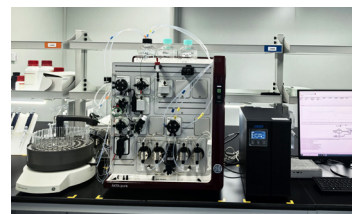
▲ABCE™单个B细胞抗体发现技术平台技术路线



流式细胞分选仪进行单细胞分选



非标记生物分子分析仪进行抗体亲和力测定及筛选



层析系统进行抗体精纯

▲ABCE™单个B细胞抗体发现技术平台部分仪器

Uni-rAb™ 重组兔单抗

Uni-rAb™ 重组兔单抗源自 Proteintech ABCE™ 单个 B 细胞抗体发现技术平台。该系列抗体继承了兔来源抗体的高特异性和高亲和力，同时也避免了传统杂交瘤细胞系表达退化的风险，具有高批次稳定性和高重复性。

- 好抗体来自好抗原** 20+ 年抗原设计经验结合创新工艺
- 高特异性** 通过多维度内源性免疫学实验及 siRNA/CRISPR 验证
- 高亲和力** 标配亲和力检测，筛选高亲和力抗体
- 超低背景** Protein A 和混合模式阳或阴离子交换介质两步精纯工艺，确保抗体高纯度。
- 高批间一致性** 重组技术突破批间差限制，实现长期稳定供应
- 上新速度快** 高通量平台，持续每天上新



扫码查看
所有重组兔单抗

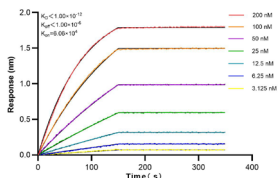
Uni-rAb™ 可提供多种抗体类型

- 非偶联抗体：** 针对关键靶标的大量未偶联单克隆重组抗体，涵盖多个研究领域，并在多种应用中得到验证。
- 偶联的抗体：** 与Proteintech专有的CoraLite® Plus 染料系列偶联的单克隆重组抗体，非常适合IF和FC应用。
- 用于流式细胞术的抗体：** 针对常见CD标志物、细胞因子和细胞内靶标的单克隆重组抗体，针对流式细胞术进行了优化。
- 仅含PBS的抗体：** 不含BSA、叠氮化钠和甘油等载体的单克隆重组抗体，可灵活用于各种下游应用，包括偶联和质谱流式细胞术。
- 仅含PBS的匹配抗体对：** 匹配的重组抗体对由捕获抗体和对同一抗原上的不同表位具有特异性的检测抗体组成。

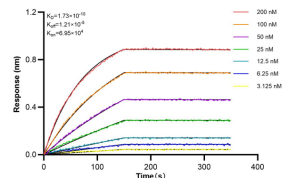
全面验证确保 Uni-rAb™ 高品质

亲和力参数-标配测定

MMP13 Recombinant antibody
货号：83188-4-RR
 $K_D < 1.0 \times 10^{-12}$

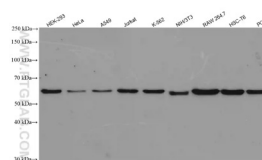


NEDD9 Recombinant antibody
货号：83362-2-RR
 $K_D = 1.73 \times 10^{-10}$

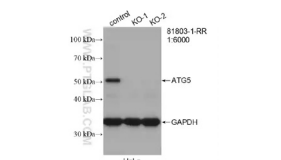


内源性免疫学实验验证

免疫印迹 (多样本)
AKT1 Recombinant antibody
货号：80816-1-RR
WB稀释比：1:10000

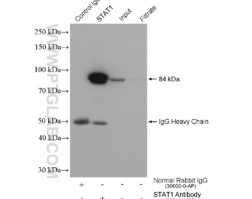


免疫印迹 (KO 验证)
ATG5 Recombinant antibody
货号：81803-1-RR
WB稀释比：1:6000

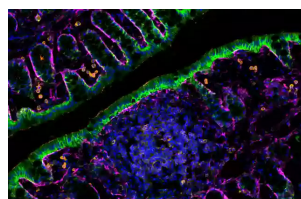


内源性免疫学实验验证

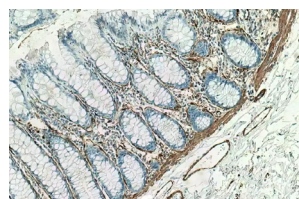
免疫沉淀
STAT1 Recombinant antibody
货号：82016-1-RR
IP: 4ug; Detection: 1:10000



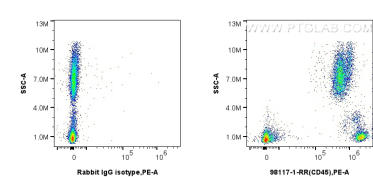
免疫荧光
CD45 Recombinant antibody
货号：80297-1-RR (橙色)



免疫组化
a SMA specific Recombinant antibody
货号：80008-1-RR
IHC稀释比：1:3000



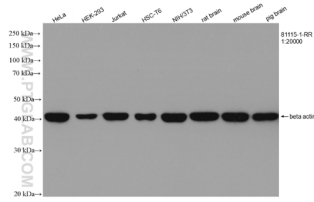
流式细胞实验
Anti-Human CD45 Rabbit Recombinant Antibody
货号：98117-1-RR



内参标签抗体

Beta Actin 重组兔单抗

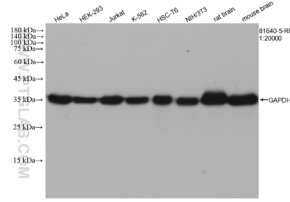
货号: 81115-1-RR 827



不同细胞及组织裂解液的WB分析

GAPDH 重组兔单抗

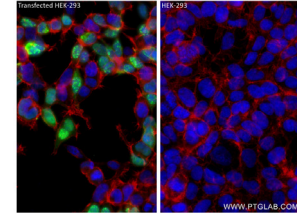
货号: 81640-5-RR 16



不同细胞及组织裂解液的WB分析

HA-tag 重组兔单抗

货号: 81290-1-RR 59



转染及未转染的HEK293的IF分析

内参标签相关重组兔单抗 (部分)

内参抗体						
抗体靶点	分子量	货号	克隆号	适用应用	适用物种	WB推荐稀释比
Albumin	66 kDa	82783-6-RR	4K1	WB, IHC, IF/ICC, IF-P, ELISA	Human, Mouse, Rat	1:20000-1:100000
Alpha Tubulin	50-55 kDa	80762-1-RR	1G7	WB, IHC, IF/ICC, IF-P, IF-Fro, ELISA	Human, Mouse, Rat	1:5000-1:50000
ATP1A1	97-110 kDa	83191-6-RR	240160E12	WB, IF/ICC, FC (Intra), ELISA	Human, Mouse	1:5000-1:50000
Beta Actin	42 kDa	81115-1-RR	4H1	WB, IHC, IF/ICC, IP, CoIP, ELISA	Bovine, Chicken, Goat, Human, Monkey, Mouse, Pig, Rat	1:5000-1:50000
Beta Tubulin	50-55 kDa	80713-1-RR	2013	WB, IHC, IF/ICC, IF-P, FC (Intra), IP, ELISA	Human, Mouse, Rat, Zebrafish	1:5000-1:50000
COXIV	17-20 kDa	82916-1-RR	3K20	WB, IHC, IF/ICC, FC (Intra), ELISA	Human, Mouse, Rat	1:5000-1:50000
GAPDH	36 kDa	81640-5-RR	1H18	WB, IF/ICC, ELISA	Human, Mouse, Rat	1:5000-1:50000
Histone H3	15-17 kDa	82807-2-RR	3D23	WB, IHC, ELISA	Human, Mouse, Rat	1:2000-1:10000
Lamin A/C	65-75 kDa	81042-1-RR	5I16	WB, IHC, IF/ICC, ELISA	Human, Mouse, Rat	1:20000-1:100000
Lamin B1	66-72 kDa	80906-1-RR	5H10	WB, IHC, IF/ICC, ELISA	Human, Mouse, Rat	1:5000-1:50000
PCNA	36 kDa	81302-6-RR	240306B9	WB, IHC, IF-P, FC (Intra), IP, ELISA	Human, Mouse, Rat	1:5000-1:50000
Transferrin/TF	77 kDa	81676-1-RR	507	WB, IHC, ELISA	Human, Mouse, Rat	1:5000-1:50000
VDAC1/Porin	31-37 kDa	81538-1-RR	2F4	WB, IHC, IF-P, FC (Intra), IP, ELISA	Human, Mouse, Rat	1:2000-1:10000
YY1	65-70 kDa	82712-3-RR	1B5	WB, IF/ICC, ELISA, ChIP-qPCR	Human, Mouse	1:1000-1:8000

标签抗体				
抗体靶点	货号	克隆号	适用应用	WB推荐稀释比
6*his, His tag	84814-1-RR	241261A7	WB, IF/ICC, FC (Intra), ELISA	1:1000-1:6000
DYKDDDDK tag	80801-2-RR	240568A11	WB, IHC, IF/ICC, FC (Intra), IP, ELISA	1:5000-1:50000
FITC	80003-1-RR	1B2	WB, IF, IP, ELISA	1:2000-1:10000
GFP tag	81835-2-RR	241614B3	WB, IF/ICC, ELISA	1:5000-1:50000
GST Tag	80006-1-RR	9B24	WB, IP, ELISA	1:5000-1:50000
HA Tag	81290-1-RR	6I21	WB, IF/ICC, FC (Intra), IP, ELISA	1:5000-1:50000
mCherry	81202-2-RR	241830F8	WB, IF/ICC, FC (Intra), ELISA	1:5000-1:50000
MYC tag	80469-2-RR	241611D1	WB, IF/ICC, FC (Intra), IP, ELISA	1:20000-1:100000
Strep Tag II	85798-1-RR	243000G10	WB, IF/ICC, ELISA	1:2000-1:10000
V5-tag	81775-4-RR	240529D8	WB, ELISA	1:500-1:2000

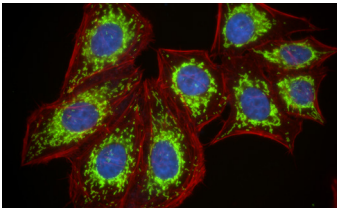
高品质抗体与新型染料强强联合

Proteintech 还可提供 HRP、Biotin 标记以及 CoraLite® 系列等荧光染料标记的内参标签抗体, 适用各种实验类型。其中 CoraLite® 及 CoraLite® Plus 系列是 Proteintech 公司引入的新型荧光染料。这两种染料具有相同的激发 / 发射波长在光谱上与 Alexa Fluor 染料相似, 但相比传统染料更稳定。

线粒体标志物

TOM20 重组兔单抗

货号: 80501-1-RR 1

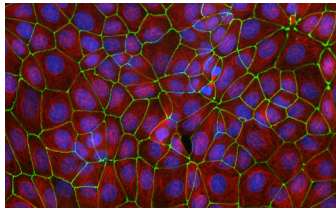


HepG2细胞的IF分析

细胞间连接标志物

ZO-1 重组兔单抗

货号: 82870-7-RR

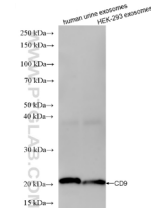


MCF7细胞的IF分析

外泌体标志物

CD9 重组兔单抗

货号: 84142-1-RR



不同来源外泌体的WB分析

细胞器及亚细胞标志物相关重组兔单抗 (部分)

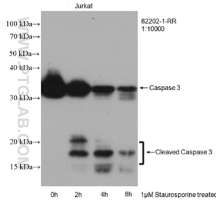
细胞器及亚细胞	抗体靶点	货号	克隆号	适用应用	适用物种
细胞膜	ATP1A1	83191-6-RR	240160E12	WB, IF/ICC, FC (Intra), ELISA	Human, Mouse
	Caveolin-1	84044-1-RR	240985E4	WB, IHC, ELISA	Human, Mouse
细胞间连接	E-cadherin	80541-7-RR	240159A1	WB, IHC, IF/ICC, ELISA	Human, Mouse
	N-cadherin	82968-1-RR	230259H5	WB, IHC, IF/ICC, ELISA	Human
	P-cadherin	86776-1-RR	251775F5	WB, ELISA	Human, Mouse
	ZO-1	82870-7-RR	240150D7	WB, IHC, IF/ICC, IF-P, FC (Intra), IP, ELISA	Canine, Human, Mouse
	Occludin	80545-1-RR	8B2	WB, IF/ICC, IP, ELISA	Human, Mouse, Pig
细胞骨架	Beta Catenin	80488-1-RR	2J24	WB, IHC, IF/ICC, CoIP ELISA, ChIP-qPCR	Human, Mouse, Pig, Rat, Zebrafish
	ACTA1-Specific	82714-5-RR	5B15	WB, IF-P, ELISA	Chicken, Human, Mouse, Pig, Rat
	Alpha Tubulin	80762-1-RR	1G7	WB, IHC, IF/ICC, IF-P, IF-Fro, ELISA	Human, Mouse, Rat
	Beta Tubulin	80713-1-RR	2O13	WB, IHC, IF/ICC, IF-P, FC (Intra), IP, ELISA	Human, Mouse, Rat, zebrafish
	Beta Actin	81115-1-RR	4H1	WB, IHC, IF/ICC, IP, CoIP ELISA	Bovine, Chicken, Goat, Human, Monkey, Mouse, Pig, Rat
	Desmin	82748-1-RR	1D21	WB, IHC, IF-P, ELISA	Human, Mouse, Pig, Rat
	Cytokeratin 7	86153-7-RR	242229F1	WB, IHC, IF/ICC, IF-P, ELISA	Human
	Cytokeratin 8	86457-4-RR	251045E11	WB, IHC, IF/ICC, IF-P, ELISA	Human
	Cytokeratin 18	82817-5-RR	4F2	WB, IHC, IF/ICC, ELISA	Human, Mouse, Rat
	Cytokeratin 20	82428-1-RR	2H10	WB, IHC, IF/ICC, IF-P, FC (Intra), ELISA	Human, Mouse, Pig, Rat
细胞核	Vimentin	80232-1-RR	6K21	WB, IHC, IF/ICC, IF-Fro, ELISA	Human, Mouse, Rat
	Histone H3	81984-2-RR	241079B2	WB, IHC, IF/ICC, FC (Intra), ELISA, ChIP-qPCR	Human, Mouse, Rat
	HDAC1	83624-1-RR	240614A3	WB, IHC, IF/ICC, FC (Intra), ELISA, ChIP-qPCR	Human, Mouse
核膜	PCNA	81302-6-RR	240306B9	WB, IHC, IF-P, FC (Intra), IP, ELISA	Human, Mouse, Rat
	Lamin B1	80906-1-RR	5H10	WB, IHC, IF/ICC, ELISA	Human, Mouse, Rat
核仁	Lamin A/C	81042-1-RR	5I16	WB, IHC, IF/ICC, ELISA	Human, Mouse, Rat
	B23/NPM1	82030-1-RR	1G4	WB, IHC, IF/ICC, IP, ELISA	Human
核孔	Nucleolin/C23	83380-1-RR	240029F8	WB, IHC, IF/ICC, FC (Intra), IP, ELISA	Human
	NUP85	83288-1-RR	240116A2	IF/ICC, FC (Intra), ELISA	Human
线粒体	NUP153	86622-1-RR	251519G11	WB, IF/ICC, ELISA	Human, Mouse
	AIF	86156-1-RR	250772G11	WB, IF/ICC, ELISA	Human, Mouse, Rat
	COXIV	82916-1-RR	3K20	WB, IHC, IF/ICC, FC (Intra), ELISA	Human, Mouse, Rat
	Cytochrome c	83276-1-RR	230503E10	WB, IF/ICC, FC (Intra), ELISA	Human, Mouse
	TOM20	80501-1-RR	1D22	WB, IHC, IF/ICC, ELISA	Chicken, Human, Mouse, Pig, Rat, Zebrafish
	VDAC1/Porin	81538-1-RR	2F4	WB, IHC, IF-P, FC (Intra), IP, ELISA	Human, Mouse, Rat
	GOLGA2/GM130	82705-8-RR	1M17	WB, IHC, IF/ICC, ELISA	Human, Rat
高尔基体	Syntaxin 6	84627-5-RR	242100A9	WB, IHC, IF/ICC, IP, ELISA	Human, Mouse, Rat
	calreticulin	80017-1-RR	2B17	WB, IHC, ELISA	Human, Mouse, Rat
	Calnexin	81938-1-RR	3K18	WB, IHC, IF/ICC, ELISA	Human, Mouse, Rat
内质网	CHOP/GADD153	81462-1-RR	1G11	WB, ELISA, ChIP-qPCR	Human, Mouse
	GRP78, BIP	80849-1-RR	5F17	WB, IHC, IF, IP, ELISA	Human, Mouse, Pig, Rat
	GRP94	83147-5-RR	230502B7	WB, IHC, IF/ICC, FC (Intra), IP, ELISA	Human, Pig
	PDI	80170-1-RR	4K17	WB, IHC, IF-P, ELISA	Human, Mouse, Rat
核糖体	RPS3	84947-4-RR	242504F3	WB, IHC, IF/ICC, ELISA	Human, Mouse, Rat
	S6 Ribosomal protein	80208-1-RR	6L9	WB, IF/ICC, ELISA	Human, Mouse, Rat, Zebrafish
外泌体	Alix	86644-1-RR	251574C12	WB, ELISA	Human, Mouse
	CD9	84142-1-RR	240830A8	WB, IHC, IF/ICC, ELISA	Human
	CD63	84507-4-RR	241964H1	WB, IHC, IF/ICC, ELISA	Human
	CD81	84644-2-RR	241722G4	IF/ICC, ELISA	Human
	CD81	84644-1-RR	241722B8	WB, ELISA	Human
	HSP70	80735-1-RR	4E10	WB, IHC, IF/ICC, ELISA	Human, Mouse, Rat, Yeast
	Hsc70	81719-2-RR	3H9	WB, ELISA	Human, Mouse, Rat
	TSG101	84334-4-RR	241657A1	WB, IHC, IF/ICC, ELISA	Human, Mouse, Rat
内体	CD71	81793-2-RR	2P14	WB, IF/ICC, ELISA	Human, Mouse, Rat
	RAB7A	84741-1-RR	241948B4	WB, IHC, IF/ICC, FC (Intra), ELISA	Human, Mouse, Rat
自噬体	LC3B	81004-1-RR	5P12	WB, IHC, IF/ICC, ELISA	Bovine, Human, Mouse, Pig, Rat, Sheep
	P62/SQSTM1	84826-1-RR	241992C4	WB, IHC, IF/ICC, FC (Intra), IP, ELISA	Human, Mouse, Rat
溶酶体	CD107a / LAMP1	84658-5-RR	242116E8	WB, IHC, IF/ICC, ELISA	Human
	CD107b / LAMP2	86269-3-RR	250948D7	WB, IHC, IF/ICC, ELISA	Human
过氧化物酶体	ACOX1	83731-2-RR	240754E3	WB, IHC, FC (Intra), ELISA	Human, Mouse, Rat
	PEX3	86594-1-RR	251383E9	WB, ELISA	Human, Mouse, Rat
	PEX14	80234-1-RR	7E6	WB, IHC, IF/ICC, ELISA	Human, Rat
中心体	AURKA	82906-1-RR	230087H3	WB, IF/ICC, ELISA	Human
	CP110	80965-5-RR	242016E10	WB, IHC, IF/ICC, ELISA	Human
纤毛	ARL13B	82834-2-RR	3H5	IF/ICC, ELISA	Human
	IFT88	82886-2-RR	230074E12	WB, IF/ICC, ELISA	Human

细胞死亡

凋亡

Caspase 3/P17/P19 重组兔单抗

货号: 82202-1-RR 43

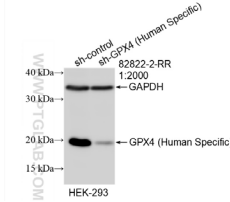


Staurosporine处理Jurkat细胞的WB分析

铁死亡

GPX4 (Human Specific) 重组兔单抗

货号: 82822-2-RR 2

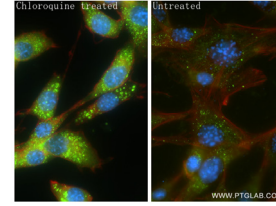


sh-Control及 sh-GPX4转染的HEK293细胞的WB分析

自噬

P62/SQSTM1 重组兔单抗

货号: 84826-1-RR 1



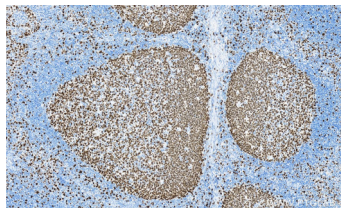
Chloroquine 处理及未处理的NIH/3T3细胞的IF分析

细胞死亡研究相关重组兔单抗 (部分)

领域	抗体靶点	货号	克隆号	适用应用	适用物种
细胞凋亡 (Apoptosis)	BAK	85200-1-RR	242458D10	WB, ELISA	Human
	Bcl2	82469-6-RR	240571H5	WB, IHC, FC (Intra), ELISA	Human, Mouse
	BCL2	80313-1-RR	3O5	WB, IHC, IF-P, ELISA	Human, Mouse
	BCL2L1	83330-1-RR	1E8	WB, IF/ICC, FC (Intra), ELISA	Human, Mouse, Rat
	BID	84944-4-RR	242460F1	WB, FC (Intra), ELISA	Human
	Caspase 3/P17/P19	82202-1-RR	5G20	WB, IHC, IF/ICC, FC (Intra), ELISA	Bovine, Human, Mouse, Rabbit, Rat
	Caspase 6	85201-2-RR	242457A8	WB, IHC, IF/ICC, ELISA	Human
	Caspase 7	85323-1-RR	242383A10	WB, FC (Intra), ELISA	Human
	Caspase 9	84949-4-RR	242452F12	WB, ELISA	Human
	CHOP/GADD153	81462-1-RR	1G11	WB, ELISA, ChIP-qPCR	Human, Mouse
	Cleaved Caspase 6/P18	85337-1-RR	242384E6	WB, ELISA	Human
	Cleaved Caspase 7	85328-1-RR	242407C12	WB, ELISA	Human
	Cleaved Caspase 8/P18	85171-3-RR	242445E5	WB, IHC, ELISA	Human
	Cleaved PARP1 (Asp214)	85175-5-RR	243142B10	WB, ELISA	Human
	Cytochrome c	83276-1-RR	230503E10	WB, IF/ICC, FC (Intra), ELISA	Human, Mouse
	FADD	84619-5-RR	241976A11	WB, IHC, IF/ICC, FC (Intra), ELISA	Human
	Fas/CD95	83400-5-RR	240340E11	IF/ICC, ELISA	Human
	Granzyme A	84583-4-RR	241979E3	WB, ELISA	Human
	Granzyme B	83763-5-RR	240761C6	WB, ELISA	Human
	P53	80077-1-RR	2H13	WB, IHC, IF/ICC, FC (Intra), ELISA	Human, Mouse, Zebrafish
PARP1	80174-1-RR	3N19	WB, IHC, IF/ICC, IF-P, ELISA, ChIP-qPCR	Human, Mouse, Rat	
TNFR1/CD120a	84243-5-RR	241336B4	WB, IHC, IF/ICC, ELISA	Human, Mouse	
铁死亡 (Ferroptosis)	ACSL4/FACL4	81196-1-RR	3I9	WB, IHC, IP, ELISA	Human, Mouse, Rat
	AIFM2/ FSP1	82974-1-RR	2J1	WB, FC (Intra), IP, ELISA	Human
	CD71	81793-3-RR	250738C5	IHC, IF/ICC, ELISA	Human
	CD71	81793-2-RR	2P14	WB, IF/ICC, ELISA	Human, Mouse, Rat
	GPX4	82949-1-RR	230168A8	IHC, IF/ICC, FC (Intra), ELISA	Human, Mouse
	GPX4 (Human Specific)	82822-2-RR	6E9	WB, ELISA	Human
	HO-1	81281-1-RR	2M6	WB, IHC, IP, ELISA	Human, pig, Rat
	HSP27	80046-5-RR	250818H6	WB, ELISA	Human
	KEAP1	80744-1-RR	5O18	WB, IHC, IF/ICC, IP, ELISA	Human, Mouse, Rat
	NRF2, NFE2L2	80593-1-RR	1I21	WB, IHC, IF/ICC, FC (Intra), IP, ELISA, ChIP-qPCR	Human
	P53	80077-1-RR	2H13	WB, IHC, IF/ICC, FC (Intra), ELISA	Human, Mouse, Zebrafish
	Transferrin/TF	81676-1-RR	5O7	WB, IHC, ELISA	Human, Mouse, Rat
铜死亡 (Cuproptosis)	ATP7B-Specific	85288-2-RR	242827B3	WB, IHC, IF-P, FC (Intra), ELISA	Human, Mouse, Rat
	CDKN2A/P16-INK4A	81373-8-RR	241438C7	WB, IHC, IF/ICC, ELISA	Human
	DLAT	83654-3-RR	240713C12	WB, IHC, IF/ICC, FC (Intra), ELISA	Human, Mouse, Rat
	FDX1	82957-2-RR	230196E9	WB, IHC, IF/ICC, FC (Intra), ELISA	Human, Mouse
	GCSH	83012-5-RR	230505A3	WB, ELISA	Human
	KGA/GAC	81486-1-RR	4C20	WB, IHC, IF/ICC, IF-P, ELISA	Human, Mouse, Rat
焦亡 (Pyroptosis)	SLC31A1	83844-5-RR	240868D10	WB, ELISA	Human
	Caspase 1	81482-1-RR	1O18	WB, IHC, IF, ELISA	Human, Mouse, Rat
	DFNA5/GSDME	83454-6-RR	240394D2	WB, IP, ELISA	Human, Mouse, Rat
	GSDMA	82920-2-RR	230161C5	WB, IF/ICC, ELISA	Human
	GSDMB	86148-1-RR	250653H4	WB, ELISA	Human
	GSDMD	83562-3-RR	240548B10	WB, IHC, IF/ICC, FC (Intra), ELISA	Mouse
	IL-1 beta	82696-15-RR	240902D6	WB, IF/ICC, ELISA	Human
	IL-18	82907-1-RR	1H14	WB, IHC, IF/ICC, FC (Intra), ELISA	Human
自噬 (Autophagy)	NLRP3	85967-1-RR	250083C8	WB, ELISA	Mouse, Rat
	AMPK Alpha	80209-5-RR	4N5	WB, IF-P, ELISA	Human, Mouse, Rat
	ATG12	84935-6-RR	242483F1	WB, IHC, ELISA	Human
	ATG5	81803-1-RR	5M5	WB, IHC, IP, ELISA	Human, Mouse, Rat
	ATG7	81760-1-RR	2M8	WB, IF/ICC, IP, ELISA	Human
	CD107a / LAMP1	84658-5-RR	242116E8	WB, IHC, IF/ICC, ELISA	Human
	CD107b / LAMP2	86269-3-RR	250948D7	WB, IHC, IF/ICC, ELISA	Human
	LC3B	81004-1-RR	5P12	WB, IHC, IF/ICC, ELISA	Bovine, Human, Mouse, Pig, Rat, Sheep
	mTOR	81670-1-RR	6H23	WB, IHC, IF/ICC, FC (Intra), IP, ELISA	Human, Mouse, Rat
	P62/SQSTM1	84826-1-RR	241992C4	WB, IHC, IF/ICC, FC (Intra), IP, ELISA	Human, Mouse, Rat
	TFEB	84675-5-RR	242093D11	WB, IF/ICC, ELISA	Human, Mouse
	ubiquitin	80992-1-RR	6H6	WB, IHC, IF/ICC, IP, CoIP, ELISA	Dog, Hamster, Human, Mouse, Rat, Spinach, Yeast

ki67 重组兔单抗

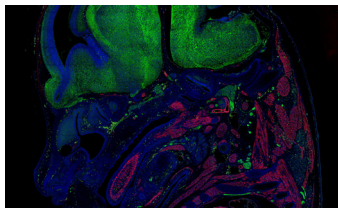
货号: 84192-4-RR 3



人扁桃腺炎组织的IHC分析

a-SMA 重组兔单抗

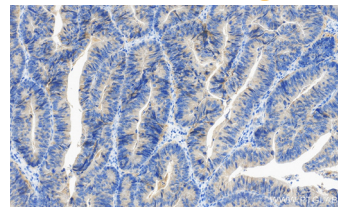
货号: 80008-1-RR 37



E14.5 FFPE小鼠胚胎切片的IF分析 (红色: a-SMA)

EPCAM/CD326 重组兔单抗

货号: 84073-6-RR 1



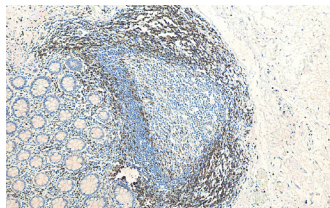
人结肠癌组织的IHC分析

肿瘤研究相关重组兔单抗 (部分)

抗体靶点	货号	克隆号	适用应用	适用物种
a-SMA specific	80008-1-RR	5H7	WB, IHC, IF-P, IF-Fro, FC (Intra), ELISA	Chicken, Duck, Human, Mouse, Pig, Rat, Zebrafish
ARID1A	83733-3-RR	240690F1	WB, IHC, IF/ICC, ELISA	Human
BCL6	81754-1-RR	3K6	WB, IHC, FC (Intra), IP, ELISA	Human, Mouse
Beta Catenin	80488-1-RR	2J24	WB, IHC, IF/ICC, ColP, ELISA, ChIP-qPCR	Human, Mouse, Pig, Rat, Zebrafish
Cadherin-17	83793-5-RR	240681B11	WB, IHC, IF-P, ELISA	Human, Mouse
CD11c	81853-1-RR	5O17	IHC, IF/ICC, ELISA	Human, Rat
CD141/Thrombomodulin	83416-4-RR	240365D1	WB, IHC, IF/ICC, ELISA	Human
CD3	81324-1-RR	4I19	WB, IHC, IF-P, ELISA	Human, Mouse, Pig, Rat
CD31	80530-1-RR	4N13	WB, IHC, IF/ICC, ELISA	Human, Mouse, Rat
CD34	84242-5-RR	242069F8	WB, IHC, IF-P, ELISA	Human
CD45	80297-1-RR	6O19	WB, IHC, IF/ICC, IF-P, IF-Fro, ELISA	Human, Mouse
CD5	83543-7-RR	240428G2	WB, IHC, IF/ICC, ELISA	Human
CD6	84508-5-RR	241965D11	WB, IHC, ELISA	Human
CD63	84507-4-RR	241964H1	WB, IHC, IF/ICC, ELISA	Human
CD68	84596-4-RR	241810B3	WB, IHC, IF-P, ELISA	Human, Mouse
CD79a	84236-4-RR	241299F1	WB, IHC, ELISA	Human
CD9	84142-1-RR	240830A8	WB, IHC, IF/ICC, ELISA	Human
CD99	84580-4-RR	241737H1	WB, IHC, IF/ICC, ELISA	Human
CDX2	82659-1-RR	3J1	WB, IHC, IF/ICC, ELISA	Human, Mouse, Rat
CEACAM6/CD66c	84982-1-RR	241997F7	WB, IHC, IF/ICC, ELISA	Human
Connexin 43	80543-1-RR	3O6	WB, IHC, IF/ICC, IF-P, ELISA	Human, Mouse, Pig, Rat
Cytokeratin 13	83058-1-RR	230366B10	WB, IHC, IF/ICC, IF-P, ELISA	Human, Mouse, Rat
Cytokeratin 14	82824-1-RR	1L19	WB, IHC, IF/ICC, IF-P, ELISA	Human, Mouse, Rat
Cytokeratin 17-specific	84978-1-RR	242240A8	WB, IHC, IF/ICC, IF-P, FC (Intra), ELISA	Human, Mouse, Rat
Cytokeratin 18	82817-5-RR	4F2	WB, IHC, IF/ICC, ELISA	Human, Mouse, Rat
Cytokeratin 20	82428-1-RR	2H10	WB, IHC, IF/ICC, IF-P, FC (Intra), ELISA	Human, Mouse, Pig, Rat
Desmin	82748-1-RR	1D21	WB, IHC, IF-P, ELISA	Human, Mouse, Pig, Rat
E-cadherin	83991-4-RR	241098G6	WB, IHC, IF/ICC, ELISA	Human
Endoglin/CD105	82993-6-RR	241196G9	WB, IHC, ELISA	Human
EPCAM/CD326	84073-6-RR	241243B10	WB, IHC, IF/ICC, ELISA	Human
FOKK2	83735-6-RR	240692H4	WB, IHC, IF/ICC, FC (Intra), ELISA	Human
Galectin-3	82024-1-RR	4M10	WB, IHC, IF/ICC, IP, ELISA	Human, Mouse
GFAP	81063-1-RR	4C6	WB, IHC, IF-P, IF-Fro, ELISA	Human, Mouse, Pig, Rat
Growth Hormone	82813-2-RR	4G8	WB, IHC, ELISA	Human, Rat
HSP70	80735-1-RR	4E10	WB, IHC, IF/ICC, ELISA	Human, Mouse, Rat, yeast
IBA1	81728-1-RR	4D5	WB, IHC, IF-P, FC (Intra), ELISA	Human, Mouse, Rat
IDO1	84063-3-RR	241110F2	WB, IHC, ELISA	Human, Mouse, Rat
Ki-67	84192-4-RR	241499E7	WB, IHC, IF/ICC, IF-P, ELISA	Human
MCM2	84511-5-RR	241968F7	WB, IHC, IF/ICC, ELISA	Human, Mouse, Rat
MSH2	82775-1-RR	6O4	WB, IHC, ELISA	Human
MUC1/CA15-3 C-terminal	83311-4-RR	240190G10	WB, IHC, ELISA	Human, Mouse
N-cadherin	82968-1-RR	230259H5	WB, IHC, IF/ICC, ELISA	Human
Pan-Keratin (Type I)	86238-2-RR	251039C1	WB, IHC, IF-P, ELISA	Human, Mouse, Rat
Pan-Keratin (Type II)	86370-1-RR	251040F7	WB, IHC, IF-P, ELISA	Human, Mouse, Rat
PAX8	80756-1-RR	6B14	WB, IHC, IF/ICC, ELISA	Human, Mouse
PD-L1/CD274	82719-15-RR	2H4	WB, IHC, IF-P, ELISA	Human, Mouse
Phospho-Histone H2A.X (Ser139)	83307-2-RR	5N19	WB, IHC, IF/ICC, FC (Intra), ELISA	Human, Mouse, Rat
Placental lactogen	84361-2-RR	241625E1	WB, IHC, ELISA	Human
P-Selectin/CD62P	83947-5-RR	240766D3	WB, IHC, IF-P, ELISA	Human, Mouse, Rat
S100B	82271-8-RR	1E2	WB, IHC, IF-P, FC (Intra), ELISA	Human, Mouse, Rat
SMARCA4/BRG1	83310-2-RR	240172F4	WB, IHC, IF/ICC, FC (Intra), ELISA	Human, Mouse, Rat
Somatostatin	84351-1-RR	240816D9	IHC, IF-P, ELISA	Human, Mouse
Synaptophysin	82900-1-RR	2H14	WB, IHC, IF/ICC, IF-P, FC (Intra), IP, ELISA	Human, Mouse, Rat
TMEM173/STING	80165-1-RR	7K7	WB, IHC, IF/ICC, IF-P, IF-Fro, IP, ELISA	Human, Mouse
VCAM-1/CD106	84249-4-RR	241284B2	WB, IHC, IF-P, ELISA	Human
VEGFR2/CD309	83049-4-RR	230238D7	WB, IHC, FC, ELISA	Human
Vimentin	80232-1-RR	6K21	WB, IHC, IF/ICC, IF-Fro, ELISA	Human, Mouse, Rat
VISTA	83919-4-RR	241003A4	WB, IHC, IF-P, ELISA	Human
VWF	83854-2-RR	240867D10	WB, IHC, IF-P, ELISA	Human, Rat

CD3 重组兔单抗

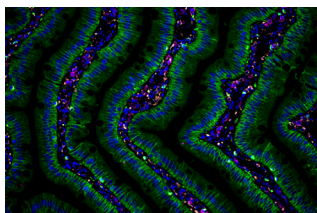
货号: 81324-1-RR 1



人结肠组织的IHC分析

CD68 重组兔单抗

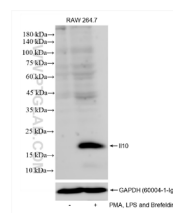
货号: 83014-5-RR 1



大鼠小肠组织的IF分析 (橙色: CD68)

IL-10 重组兔单抗

货号: 82191-3-RR 7



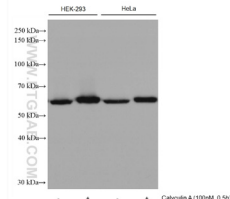
PMA, LPS及Brefeldin A处理及未处理的RAW264.7细胞的WB分析

免疫学研究相关重组兔单抗 (部分)

抗体靶点	货号	克隆号	适用应用	适用物种
Beta-2-Microglobulin	83683-6-RR	240660A12	WB, IHC, IP, ELISA	Human
CD11c	81853-1-RR	5017	IHC, IF/ICC, ELISA	Human, Rat
CD14	83055-6-RR	230332D4	WB, ELISA	Human
CD163	83285-4-RR	240233A3	WB, IHC, IF-P, ELISA	Mouse, Rat
CD19	86116-1-RR	250499C1	WB, IHC, IF/ICC, ELISA	Human
CD19	83254-1-RR	240135A3	WB, IHC, IF-P, ELISA	Mouse, Rat
CD2	84108-5-RR	241222B8	WB, IF/ICC, ELISA	Human
CD2	84360-4-RR	241548D7	WB, IHC, ELISA	Mouse
CD206	81525-1-RR	1G15	WB, IHC, IF-P, ELISA	Human, Pig, Rat
CD206	83485-1-RR	240344B9	WB, IHC, IF-P, ELISA	Mouse, Rat
CD3	81324-1-RR	4119	WB, IHC, IF-P, ELISA	Human, Mouse, Pig, Rat
CD31	80530-1-RR	4N13	WB, IHC, IF/ICC, ELISA	Human, Mouse, Rat
CD31	85898-4-RR	250372F8	WB, IHC, IF-P, ELISA	Mouse, Rat
CD34	84242-5-RR	242069F8	WB, IHC, IF-P, ELISA	Human
CD34	83713-2-RR	240659C7	WB, IHC, IF/ICC, ELISA	Mouse
CD38	84070-6-RR	241246D5	WB, IHC, IF/ICC, ELISA	Human
CD38	85843-1-RR	250107D9	WB, ELISA	Mouse, Rat
CD4	83513-7-RR	240427E12	WB, IF/ICC, ELISA	Human
CD4	86300-3-RR	250263G12	WB, IHC, IF-P, ELISA	Mouse
CD44	85163-5-RR	242666C11	WB, IHC, IF/ICC, ELISA	Human, Mouse
CD45	80297-1-RR	6019	WB, IHC, IF/ICC, IF-P, IF-Fro, ELISA	Human, Mouse
CD45	83396-5-RR	240356G10	WB, IHC, IF/ICC, ELISA	Mouse
CD5	83543-7-RR	240428G2	WB, IHC, IF/ICC, ELISA	Human
CD68	84596-4-RR	241810B3	WB, IHC, IF-P, ELISA	Human, Mouse
CD68	83014-5-RR	230504G10	WB, IHC, IF-P, ELISA	Mouse, Rat
CD80	83198-5-RR	242913D1	WB, ELISA	Human
CD80	86532-1-RR	250725H4	WB, IF/ICC, ELISA	Mouse, Rat
CD86	83523-4-RR	240429G12	WB, IHC, IF/ICC, ELISA	Human
CD8a	86063-2-RR	243018F10	IHC, IF/ICC, ELISA	Human
CD8a	85977-4-RR	242879E1	WB, IHC, IF-P, ELISA	Mouse
C-Reactive Protein/CRP	83711-1-RR	240369B10	WB, ELISA	Mouse
C-Reactive Protein/CRP	83741-3-RR	240759B8	WB, IHC, ELISA	Rat
F4/80	81668-1-RR	2P18	IHC, IF/ICC, IF-P, IF-Fro, ELISA	Mouse
Foxp3	85128-6-RR	242853G11	WB, IHC, IF-P, ELISA	Human, Mouse, Rat
G-CSF	86376-1-RR	250389H1	WB, FC (Intra), ELISA	Human
Granzyme B	83763-5-RR	240761C6	WB, ELISA	Human
ICAM-1/CD54	83069-6-RR	230342A2	WB, IF/ICC, ELISA	Human
IFN alpha 2B	85261-2-RR	250407B7	WB, ELISA	Human
IL-1 beta	82696-15-RR	240902D6	WB, IF/ICC, ELISA	Human
IL-1 beta	84136-5-RR	241364D5	WB, ELISA	Human, Mouse
IL-10	82191-3-RR	240430G12	WB, IHC, ELISA	Mouse, Rat
IL-2	83558-5-RR	240416H3	WB, ELISA	Human
IL-2	83547-3-RR	240358B1	WB, ELISA	Mouse
IL-4	85179-5-RR	242736G10	WB, IF/ICC, ELISA	Human, Mouse
IL-6	83747-5-RR	240670F10	WB, IF/ICC, ELISA	Human
IL-6	83795-7-RR	240701B9	WB, IHC, ELISA	Mouse
LAG-3/CD223	80867-1-RR	1F14	WB, IF, ELISA	Human, Mouse
MPO	84436-5-RR	241839C11	WB, IHC, IF-P, ELISA	Human, Mouse, Rat
NCAM1/CD56	82715-1-RR	6N11	WB, IHC, IF-P, ELISA	Human, Mouse, Pig, Rat
PD-1/CD279	83516-6-RR	240390D6	WB, ELISA	Mouse
PD-L1/CD274	82719-15-RR	2H4	WB, IHC, IF-P, ELISA	Human, Mouse
PD-L1/CD274	83906-6-RR	240993C9	WB, IHC, IF-P, ELISA	Human, Mouse, Rat
Perforin	83977-1-RR	241009C10	WB, ELISA	Human, Mouse
P-Selectin/CD62P	83947-5-RR	240766D3	WB, IHC, IF-P, ELISA	Human, Mouse, Rat
TIGIT	83545-1-RR	240423D3	WB, IHC, IF/ICC, IF-P, ELISA	Human, Mouse, Rat
TMEM173/STING	80165-1-RR	7K7	WB, IHC, IF/ICC, IF-P, IF-Fro, IP, ELISA	Human, Mouse
TNF-alpha	83721-7-RR	240668B4	WB, ELISA	Human
TNF-alpha	80258-6-RR	240702B7	WB, IF/ICC, ELISA	Mouse
VCAM-1/CD106	84249-4-RR	241284B2	WB, IHC, IF-P, ELISA	Human
VISTA	83919-4-RR	241003A4	WB, IHC, IF-P, ELISA	Human

AKT1-specific 重组兔单抗

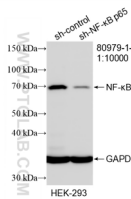
货号: 80457-1-RR 9



Calyculin A处理及未处理的HEK293和HeLa细胞的WB分析

NF-κB p65 重组兔单抗

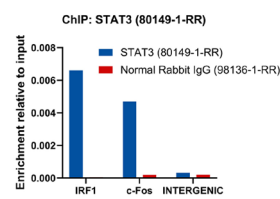
货号: 80979-1-RR 112



sh-Control和sh-NF-κB p65转染的HEK293细胞的WB分析

STAT3 重组兔单抗

货号: 80149-1-RR 3



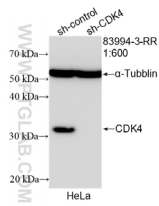
饥饿过夜并经过IL-6 30分钟刺激处理的HepG2细胞的ChIP-qPCR分析

信号通路研究相关重组兔单抗 (部分)

抗体靶点	货号	克隆号	适用应用	适用物种
AKT1-Specific	80457-1-RR	415	WB, IHC, IF/ICC, ELISA	Human, Mouse
Phospho-AKT (Ser473)	80455-1-RR	2E17	WB, IHC, IF, FC (Intra), ELISA	bovine, Human, Mouse, Pig, Rabbit, Rat
Phospho-AKT (Thr308)	81232-10-RR	242063B2	WB, FC (Intra), ELISA	Human, Mouse, Rat
Phospho-AKT1 (Ser473)	80462-1-RR	2M10	WB, FC (Intra), ELISA	Human, Mouse
AKT3	85769-4-RR	250046E12	WB, ELISA	Human, Mouse, Rat
BCL2	80313-1-RR	3O5	WB, IHC, IF-P, ELISA	Human, Mouse
Phospho-BCL2 (Ser70)	80771-2-RR	230061A8	WB, IHC, FC (Intra), ELISA	Human
Beta Catenin	80488-1-RR	2J24	WB, IHC, IF/ICC, CoIP, ELISA, ChIP-qPCR	Human, Mouse, Pig, Rat, Zebrafish
Phospho-Beta Catenin (Ser33)	80067-1-RR	3K1	WB, IF, FC (Intra), ELISA	Human, Mouse, Rat
Phospho-Beta Catenin (Ser552)	80035-2-RR	250272E1	WB, ELISA	Human
Phospho-Beta Catenin (Ser675)	80084-1-RR	6D6	WB, IF/ICC, ELISA	Human, Mouse, Rat
CAMK2A-Specific	85197-1-RR	242085C3	WB, ELISA	Human, Mouse, Rat
CDK2	83635-2-RR	240580G11	WB, IHC, IF/ICC, FC (Intra), ELISA	Human, Rat
CDK4	83994-3-RR	241053F10	WB, IHC, IF/ICC, IP, ELISA	Human
Cyclin D1	82681-1-RR	6B10	WB, IHC, IF/ICC, ELISA	Human, Mouse, Rat
Phospho-c-SRC (Ser17)	80706-3-RR	250845F12	WB, ELISA	Human
Phospho-c-SRC (Tyr530)	80706-2-RR	241477A4	WB, ELISA	Human, Mouse
EGFR	83806-1-RR	240603F10	WB, IHC, IF/ICC, FC (Intra), ELISA	Human
Phospho-EGFR (Tyr1016)	82736-11-RR	250687B2	WB, ELISA	Human
Phospho-EGFR (Tyr1197)	84906-1-RR	241826G10	WB, FC (Intra), ELISA	Human
Phospho-EGFR (Tyr869)	84839-1-RR	241785G5	WB, FC (Intra), ELISA	Human
FAK	81334-5-RR	242295E4	WB, IF/ICC, ELISA	Human, Mouse
Phospho-FAK (Tyr397)	83933-1-RR	240630F8	WB, IF/ICC, ELISA	Human
Phospho-GSK3A (Tyr279)/GSK3B (Tyr216)	82371-5-RR	242663E11	WB, ELISA	Human, Mouse
GSK3B	82061-1-RR	4N21	WB, IHC, IP, ELISA	Human, Mouse, Rat
HER2/ErbB2, p185-Specific	84046-1-RR	240802C2	WB, IHC, IF/ICC, ELISA	Human, Mouse
Phospho-HER2/ErbB2 (Tyr877)	82762-11-RR	250539F5	WB, ELISA	Human
IGF1R/CD221	84385-3-RR	241678B8	WB, IF/ICC, ELISA	Human
IKKB	81347-2-RR	250538F11	WB, IF/ICC, ELISA	Human, Mouse, Rat
JNK	81629-1-RR	6J16	WB, IHC, IF/ICC, FC (Intra), ELISA	Human, Mouse, Rat
Phospho-JNK (Thr183/Tyr185)	80435-3-RR	243163F8	WB, ELISA	Human, Mouse
Phospho-JNK (Tyr185)	80024-1-RR	2G8	WB, IHC, IF/ICC, FC (Intra), ELISA	Human, Mouse, Pig, Rat, Sheep, Zebrafish
MEK1/2	84967-1-RR	242614G3	WB, IHC, IF/ICC, FC (Intra), ELISA	Human, Mouse, Rat
Phospho-MEK2 (Thr394)	84556-1-RR	241669E6	WB, ELISA	Human, Mouse
mTOR	81670-1-RR	6H23	WB, IHC, IF/ICC, FC (Intra), IP, ELISA	Human, Mouse, Rat
Phospho-mTOR (Ser2448)	80596-1-RR	3L18	WB, IF/ICC, FC (Intra), ELISA	bovine, Human, Mouse, Rat
NF-κB p65	80979-1-RR	4C7	WB, IHC, IF/ICC, FC (Intra), IP, ELISA, ChIP-qPCR	Human, Mouse, Pig, Rat
Phospho-NF-κB p65 (Ser468)	82335-1-RR	6N1	WB, IHC, IF, FC (Intra), ELISA	Human, Mouse, Pig, Rat
Phospho-NF-κB p65 (Ser536)	80379-2-RR	240777D9	WB, FC (Intra), ELISA	Human, Mouse, Rat
NRAS	83815-2-RR	242810G11	WB, ELISA	Human, Mouse, Rat
p300	83078-5-RR	230369D12	WB, IF/ICC, FC (Intra), IP, ELISA	Human
p38 MAPK	80821-2-RR	230263D11	WB, IHC, IF/ICC, FC (Intra), IP, ELISA	Human, Mouse, Rat
Phospho-p38 MAPK (Thr180/Tyr182)	81212-2-RR	242308D3	WB, IHC, ELISA	Human, Mouse
P53	80077-1-RR	2H13	WB, IHC, IF/ICC, FC (Intra), ELISA	Human, Mouse, Zebrafish
Phospho-P53 (Ser15)	80195-1-RR	2J21	WB, IF/ICC, FC (Intra), ELISA, ChIP-qPCR	Human
Phospho-P53 (Ser392)	80077-2-RR	241575F6	WB, FC (Intra), ELISA	Human
Phospho-P53 (Ser46)	80077-9-RR	250307A3	WB, ELISA	Human
pan-RAS	81615-1-RR	2I22	WB, IHC, IF/ICC, ELISA	Human, Mouse, Pig, Rat
Phospho-PAK1 (Ser144)/PAK2 (Ser141)	85044-1-RR	242123D12	WB, ELISA	Human, Mouse, Rat
PDGFR alpha/CD140a	84383-2-RR	241658G6	WB, ELISA	Human, Mouse
PI3 Kinase p110 Alpha	82796-4-RR	1B4	WB, ELISA	Human, Mouse, Rat
RAF1	84994-4-RR	242540A2	WB, IF/ICC, ELISA	Human, Mouse, Rat
RHOA	82760-2-RR	240880E5	WB, IF/ICC, ELISA	Human, Mouse, Rat
ROCK1	83166-5-RR	230423C6	WB, IHC, IF/ICC, FC (Intra), ELISA	Human, Mouse
SMAD2	83841-4-RR	240950F1	WB, IF/ICC, FC (Intra), ELISA, ChIP-qPCR	Human, Rat
Phospho-SMAD2 (Ser465/467)/SMAD3 (Ser423/425)	80427-2-RR	240826D11	WB, IF/ICC, FC (Intra), ELISA, ChIP-qPCR	Human, Mouse, Rat
SMAD4	83169-5-RR	240026G9	WB, IF/ICC, FC (Intra), ELISA, ChIP-qPCR	Human, Mouse
SOS1	82784-2-RR	2J16	WB, ELISA	Human
STAT1	82016-1-RR	2F16	WB, IHC, IF/ICC, IP, ELISA, ChIP-qPCR	Human, Mouse, Rat
Phospho-STAT1 (Ser727)	80683-7-RR	240897D10	WB, ELISA	Human
Phospho-STAT1 (Tyr701)	82674-10-RR	1C5	WB, FC (Intra), ELISA, ChIP-qPCR	Human
STAT3	80149-1-RR	3H1	WB, IHC, ELISA, ChIP-qPCR	Human, Mouse
Phospho-STAT3 (Ser727)	80199-2-RR	240778A12	WB, FC (Intra), ELISA, ChIP-qPCR	Human, Mouse
TGFBR1	84453-1-RR	241441A11	WB, IHC, ELISA	Human
VEGFA	81323-2-RR	7H10	WB, IF/ICC, ELISA	Human, Mouse
VEGFR2/CD309	83049-4-RR	230238D7	WB, IHC, FC, ELISA	Human
WNT3A	84577-4-RR	241993E8	IF/ICC, FC (Intra), ELISA	Human
YAP1	81090-1-RR	5E3	WB, IHC, IF/ICC, ELISA	Human, Mouse, Rat, Sheep
Phospho-YAP1 (Ser127)	80694-2-RR	240779G4	WB, FC (Intra), ELISA	Human
Phospho-YAP1 (Ser397)	80694-3-RR	250306F11	WB, ELISA	Human, Mouse

CDK4 重组兔单抗

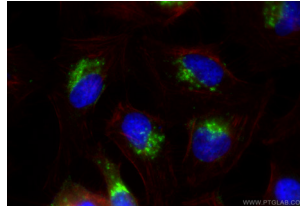
货号: 83994-3-RR 1



sh-Control 及sh-CDK4转染HeLa细胞的WB分析

Flotillin 1 重组兔单抗

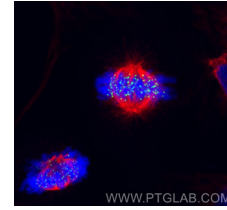
货号: 83598-4-RR



HeLa细胞的IF分析 (绿色: Flotillin 1)

HEC1/HEC/NDC80 重组兔单抗

货号: 83859-1-RR



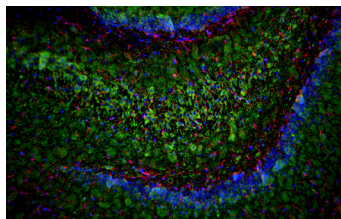
HeLa细胞的IF分析 (绿色: HEC1/HEC/NDC80)

细胞生物学研究相关重组兔单抗 (部分)

抗体靶点	货号	克隆号	适用应用	适用物种
ALPL	82915-2-RR	230212D5	WB, FC (Intra), ELISA	Human
ARNT/HIF-1 beta	84650-4-RR	242111G2	WB, IF/ICC, FC (Intra), ELISA	Human, Rat
ATG13	82718-3-RR	3G14	WB, IHC, ELISA	Human, Mouse, Rat
BCL10	85858-2-RR	250149A6	WB, ELISA	Human
BUB1B	83920-6-RR	240969F7	WB, IHC, IF/ICC, ELISA	Human, Mouse
Caspase 10	85196-3-RR	242353H6	WB, IHC, IF/ICC, FC (Intra), ELISA	Human
CDC20	84531-5-RR	241925E12	WB, IHC, ELISA	Human
CDK1	84271-1-RR	240937C5	WB, IF/ICC, ELISA	Human, Mouse
CDK2	83635-2-RR	240580G11	WB, IHC, IF/ICC, FC (Intra), ELISA	Human, Rat
CDK4	83994-3-RR	241053F10	WB, IHC, IF/ICC, IP, ELISA	Human
CDK6	84200-1-RR	241022F11	WB, IF/ICC, ELISA	Human
CDK8	83621-6-RR	240598G9	WB, IF/ICC, FC (Intra), ELISA	Human, Mouse
CDK9	83662-2-RR	240600E3	WB, IHC, IF/ICC, FC (Intra), ELISA	Human
CEL	85081-4-RR	242761B11	WB, IHC, ELISA	Human
CUL1	82474-1-RR	5K17	WB, IP, ELISA	Human, Mouse, Rat
CUL3	83619-5-RR	240534C7	WB, IP, ELISA	Human
Cyclin A1	86151-1-RR	250550D7	WB, ELISA	Human, Rat
Cyclin A2	82148-1-RR	1C23	WB, IHC, IF/ICC, IP, ELISA	Human, Mouse, Rat
Cyclin B1	85895-3-RR	250227C12	WB, ELISA	Human
Cyclin D1	82681-1-RR	6B10	WB, IHC, IF/ICC, ELISA	Human, Mouse, Rat
Cyclin E1	82700-10-RR	240136D4	WB, FC (Intra), ELISA	Human, Rat
Cyclin E2	85803-3-RR	243114A3	WB, ELISA	Human, Mouse, Rat
Cyclin T1	84980-1-RR	242256C3	WB, FC (Intra), ELISA, CHIP-qPCR	Human
DTL	83107-1-RR	230144C9	IF/ICC, FC (Intra), ELISA	Human
Flotillin 1	83598-4-RR	240582G6	WB, IHC, IF/ICC, IP, ELISA	Human, Mouse, Rat
FOXO1	82997-1-RR	230183D1	WB, IHC, IF/ICC, FC (Intra), ELISA	Human
GABARAPL1	83817-1-RR	240533F5	WB, IHC, IF/ICC, ELISA	Human, Mouse, Rat
GADD34	81250-1-RR	4K3	WB, IF/ICC, ELISA	Human, Mouse
Galectin-1	85091-1-RR	242313B10	WB, ELISA	Human, Mouse
GSDMD	80918-1-RR	2N24	WB, FC (Intra), ELISA	Human, Mouse
HEC1/HEC/NDC80	83859-1-RR	5A2	WB, IF/ICC, FC (Intra), ELISA	Human
Histone H1.0	83993-1-RR	241147D2	WB, FC (Intra), ELISA	Human, Mouse, Rat
IGFBP3	84470-4-RR	241723B3	WB, ELISA	Human
KIF1C	85981-1-RR	250588F10	WB, IHC, IF/ICC, ELISA	Human, Mouse
Loricrin	83865-1-RR	240605C8	IHC, IF/ICC, FC (Intra), ELISA	Human, Mouse
NAP1;NCKAP1	85142-2-RR	242784C5	WB, ELISA	Human, Mouse, Rat
NAT10	82585-1-RR	5B9	WB, IF/ICC, IP, ELISA	Human
PAK2	85646-2-RR	243124G9	WB, ELISA	Human
PIN1	81857-1-RR	5N20	WB, IHC, IF/ICC, IP, ELISA	Human, Mouse, Pig, Rat
PPP1R13L	86044-1-RR	250633E12	WB, ELISA	Human, Mouse
PRDX1	86589-1-RR	251425E8	WB, ELISA	Human, Mouse, Rat
PSMD14/POH1	84767-3-RR	242160E7	WB, IHC, IF/ICC, ELISA	Human, Mouse
RAD21	84920-4-RR	242172E3	WB, IF/ICC, FC (Intra), ELISA	Human, Mouse, Rat
RAF1	84994-4-RR	242540A2	WB, IF/ICC, ELISA	Human, Mouse, Rat
REDD1	82650-1-RR	1L2	WB, ELISA	Human
RIPK1	84036-6-RR	251185E7	WB, ELISA	Human
SAE1	84516-7-RR	241923C6	WB, FC (Intra), ELISA	Human
Securin	83981-4-RR	241090G10	IF/ICC, FC (Intra), ELISA	Human
SENP1	83594-4-RR	240478D3	WB, IHC, ELISA	Human, Mouse, Rat
Serpin E1/PAI-1	83980-3-RR	241130G6	WB, ELISA	Mouse
STX17	81899-1-RR	4G3	WB, IHC, IF/ICC, ELISA	Human, Mouse, Rat
TACC3	84940-5-RR	242527A12	WB, IHC, IF/ICC, ELISA	Human
Timp-3	83627-1-RR	240374D8	WB, FC (Intra), ELISA	Human
TRIM25	85919-1-RR	250176H6	WB, IHC, IF/ICC, ELISA	Human
USP10	81435-2-RR	240583G6	WB, IF/ICC, ELISA	Human, Mouse
USP14	82128-1-RR	3G12	WB, IP, ELISA	Human, Mouse, Rat
USP4	83734-2-RR	240797B11	WB, IHC, FC (Intra), ELISA	Human
USP8	83172-2-RR	240016D3	WB, IF/ICC, FC (Intra), ELISA	Human
VAMP8	85400-4-RR	242830B11	WB, IHC, IF/ICC, ELISA	Human, Mouse, Rat
VDAC2	84225-2-RR	241569G11	WB, IHC, IF/ICC, FC (Intra), IP, ELISA	Human, Mouse, Rat
VDAC3	82666-14-RR	230451C7	WB, IHC, ELISA	Human, Mouse, Rat

GFAP 重组兔单抗

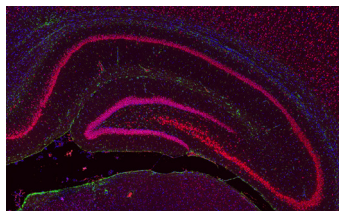
货号: 81063-1-RR



大鼠大脑组织的IF分析 (红色: GFAP)

NeuN 重组兔单抗

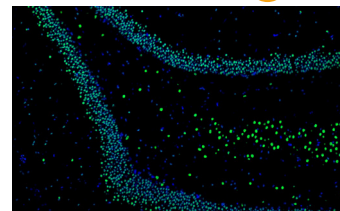
货号: 84401-4-RR



大鼠大脑组织的IF分析 (红色: NeuN)

TDP-43 重组兔单抗

货号: 80002-1-RR 5



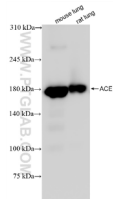
大鼠大脑组织的IF分析 (绿色: TDP-43)

神经生物学研究相关重组兔单抗 (部分)

抗体靶点	货号	克隆号	适用应用	适用物种
A2BP1	85732-2-RR	243149B4	WB, ELISA	Human, Mouse, Rat
AGER/RAGE	83759-5-RR	240706C3	WB, IHC, IF-P, ELISA	Mouse, Rat
AGER/RAGE	83759-4-RR	240706F7	WB, IF-P, ELISA	Rat
AGRN	86507-3-RR	251295C12	WB, ELISA	Human
AMPK Alpha	80209-5-RR	4N5	WB, IF-P, ELISA	Human, Mouse, Rat
APOE	84775-7-RR	242310B2	IHC, IF/ICC, ELISA	Human, Mouse
APOE	84775-6-RR	242310B3	WB, FC (Intra), ELISA	Human
APP	84829-6-RR	250546B3	WB, IF/ICC, ELISA	Human, Rat
Aquaporin 4	82296-6-RR	240856C7	WB, IHC, IF-P, ELISA	Human, Mouse, Rat
Ataxin 2	80919-2-RR	250888E4	WB, IHC, IF-P, IP, ELISA	Human, Mouse
Calretinin	82811-1-RR	2F20	WB, IHC, IF/ICC, FC (Intra), ELISA	Human, Mouse, Pig, Rat
Cryptochrome 1	83602-5-RR	240520B12	WB, ELISA	Human
Cryptochrome 2	85866-1-RR	250166A8	WB, IP, ELISA	Human, Mouse
CUX2	82933-1-RR	230235G1	WB, IF/ICC, ELISA	Human
DCX	84595-4-RR	241985H1	WB, IHC, ELISA	Human, Rat
Drebrin	83591-2-RR	240599G12	WB, IHC, FC (Intra), ELISA	Human, Mouse, Rat
ELAVL2	86623-3-RR	251573E1	WB, ELISA	Human, Mouse, Rat
G3BP1	80777-1-RR	7F14	IHC, IF/ICC, IF-P, ELISA	Human, Mouse
GAD65	85750-1-RR	250044B5	WB, ELISA	Human, Mouse, Rat
GAT1	85060-2-RR	242637D11	WB, IHC, IF-P, ELISA	Human, Mouse, Rat
GFAP	81063-1-RR	4C6	WB, IHC, IF-P, IF-Fro, ELISA	Human, Mouse, Pig, Rat
GLAST/EAAT1	84497-4-RR	241907H3	IF/ICC, FC (Intra), ELISA	Human, Mouse
GLUD2	85602-5-RR	243041D11	WB, ELISA	Human
GSK3B	82061-1-RR	4N21	WB, IHC, IP, ELISA	Human, Mouse, Rat
HOMER1	85692-4-RR	243007G2	WB, IHC, IF/ICC, ELISA	Human, Mouse, Rat
IBA1	81728-1-RR	4D5	WB, IHC, IHC-Autostainer, IF-P, FC (Intra), ELISA	Human, Mouse, Rat
MAG	86097-1-RR	250555A7	WB, IHC, ELISA	Human, Mouse
MAP2	84306-3-RR	241653E9	WB, IHC, IF-P, IF-Fro, ELISA	Human, Mouse, Rat
MOG	83063-6-RR	250235E1	WB, ELISA	Human, Mouse, Pig, Rat
NeuN	84401-4-RR	241461G7	WB, IHC, IF-P, IF-Fro, ELISA	Human, Mouse, Pig, Rat
Neurocan	86279-1-RR	250695D11	WB, ELISA	Human
Neurogranin	83593-5-RR	240526B9	WB, IHC, FC (Intra), ELISA	Human, Mouse, Rat
NSE	86332-1-RR	250903A11	WB, ELISA	Human, Mouse, Rat
OLIG2	82806-7-RR	240839C1	WB, IF-P, ELISA	Human, Mouse, Rat
Parvalbumin	85819-4-RR	250158B6	IHC, IF-P, ELISA	Human, Mouse
Peripherin	86057-1-RR	250661A3	WB, IHC, IF-P, ELISA	Human, Mouse, Rat
Piezo1 (extracellular domain)	82625-4-RR	4B15	WB, IHC, IF/ICC, ELISA	Human, Rat
Presenilin-1-Specific	83618-5-RR	250834G3	WB, ELISA	Human, Monkey, Mouse, Rat
Presenilin-1-Specific	83618-3-RR	240615B4	WB, IHC, IF-P, ELISA	Human, Rat
PSD95-Specific	81106-1-RR	1122	WB, IHC, IF-P, ELISA	Human, Mouse, Rat
RPE65	83861-1-RR	240518F1	WB, ELISA	Human
S100B	82271-8-RR	1E2	WB, IHC, IF-P, FC (Intra), ELISA	Human, Mouse, Rat
Serotonin transporter	84844-3-RR	242252B9	WB, IHC, ELISA	Human, Mouse
SNAP25	83259-5-RR	240069F12	WB, IF/ICC, ELISA	Human, Mouse, Rat
SNAP25	83259-1-RR	240069A1	IHC, IF/ICC, FC (Intra), ELISA	Human, Mouse, Rat
SOD1	83857-6-RR	240888B9	WB, ELISA	Human
SYN1-Specific	85360-1-RR	242415H5	WB, IF-P, ELISA	Human, Mouse
Synaptophysin	82900-1-RR	2H14	WB, IHC, IF/ICC, IF-P, FC (Intra), IP, ELISA	Human, Mouse, Rat
Synaptotagmin-1	83637-4-RR	240589F6	WB, IHC, IF/ICC, ELISA	Human, Mouse, Rat
Syntaxin 1B	83298-1-RR	240156B9	WB, IHC, IF/ICC, FC (Intra), ELISA	Human, Mouse
TDP-43 (C-terminal)	81350-1-RR	5D17	WB, IHC, IF/ICC, FC (Intra), ELISA	Human, Mouse, Rat
TDP-43 (N-terminal)	80002-1-RR	16A22	WB, IHC, IF/ICC, IF-P, FC (Intra), IP, ELISA	Human, Mouse, Rat
TMEM106B	84196-3-RR	250288B6	IHC, ELISA	Human, Mouse
TMEM106B	84196-1-RR	241185F1	WB, ELISA	Human
TMEM119	83448-6-RR	240433F2	WB, ELISA	Mouse, Rat
TREM2	83438-6-RR	240384B7	WB, ELISA	Human, Mouse
TUBB3-specific/TUJ1	80128-3-RR	250851G10	WB, IHC, IF-P, ELISA	Human, Mouse, Rat
UCH-L1/PGP9.5	84154-5-RR	241107B3	WB, IHC, IF-P, ELISA	Human, Mouse, Rat
UCH-L1/PGP9.5	84154-4-RR	241107B2	WB, IHC, IF/ICC, IF-P, ELISA	Human, Mouse, Rat
VCP	82463-1-RR	3G23	WB, IHC, IF/ICC, IF-P, ELISA	Human, Mouse, Rat
VGLUT2	84083-2-RR	241255B5	WB, IF-Fro, ELISA	Human, Mouse

ACE 重组兔单抗

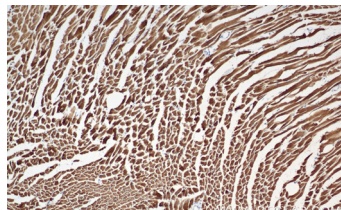
货号：84407-4-RR



不同组织裂解液的WB分析

Cardiac Troponin T 重组兔单抗

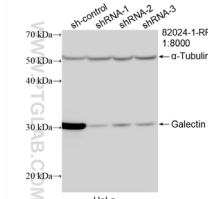
货号：81638-3-RR



小鼠心脏组织的IHC分析

Galectin-3 重组兔单抗

货号：82024-1-RR



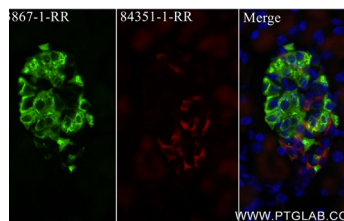
sh-Control及sh-Galectin 3转染的HeLa细胞的WB分析

心血管研究相关重组兔单抗（部分）

抗体靶点	货号	克隆号	适用应用	适用物种
5 Lipoxygenase	83794-4-RR	240740A10	WB, IHC, ELISA	Human
ACE	84407-4-RR	241763E3	WB, IHC, IF-P, ELISA	Human, Mouse, Rat
Adiponectin receptor	85121-4-RR	242777F3	WB, IHC, IF-P, IP, ELISA	Human, Mouse, Rat
AFP	82982-6-RR	230435E3	WB, IHC, ELISA	Human
Alpha 2-Antiplasmin	86042-3-RR	250548D8	WB, ELISA	Human, Mouse
Alpha smooth muscle actin specific	80008-1-RR	5H7	WB, IHC, IF-P, IF-Fro, FC (Intra), ELISA	chicken, duck, human, Mouse, Pig, Rat, zebrafish
Alpha-1-Antitrypsin	82918-1-RR	230109A8	WB, IHC, FC (Intra), ELISA	Human
Alpha-1-microglobulin	83678-3-RR	240751G7	WB, FC (Intra), ELISA	Human
Alpha-2-Macroglobulin	84347-5-RR	241649D2	WB, IF/ICC, FC (Intra), ELISA	Human
Angiogenin	85635-1-RR	242738D1	WB, IF/ICC, ELISA	Human
Angiotensin-2	83816-1-RR	240760D5	WB, IHC, IP, ELISA	Mouse
Angiotensinogen/AGT	86134-1-RR	250570F8	WB, ELISA	Mouse, Rat
ANGPTL4	86006-4-RR	250335F5	WB, ELISA	Mouse, Rat
APOB	84047-1-RR	240884H4	WB, IHC, IF-P, ELISA	Human, Mouse
APOE	84775-7-RR	242310B2	IHC, IF/ICC, ELISA	Human, Mouse
APOE	84775-6-RR	242310B3	WB, FC (Intra), ELISA	Human
Apolipoprotein AI	83504-1-RR	240269F1	WB, IHC, IF/ICC, FC (Intra), ELISA	Human
APP	84829-6-RR	250546B3	WB, IF/ICC, ELISA	Human, Rat
Beta-2-Microglobulin	83683-6-RR	240660A12	WB, IHC, IP, ELISA	Human
BMP4	86168-1-RR	250803D1	WB, ELISA	Human, Mouse, Rat
C5AR1/CD88	84336-6-RR	241712G8	WB, IF/ICC, ELISA	Human
Calsequestrin 2	84056-6-RR	241211A3	WB, IHC, IF/ICC, FC (Intra), ELISA	Human, Mouse, Pig, Rat
Cardiac Troponin T	81638-3-RR	250230B1	WB, IHC, IF-P, ELISA	Human, Mouse, Pig, Rat
CD141/Thrombomodulin	84412-3-RR	241730D4	WB, IHC, IF/ICC, ELISA	Mouse
CD141/Thrombomodulin	83416-4-RR	240365D1	WB, IHC, IF/ICC, ELISA	Human
CD146/MCAM	86492-1-RR	250530B11	WB, IF/ICC, ELISA	Human
CD31	80530-1-RR	4N13	WB, IHC, IF/ICC, ELISA	Human, Mouse, Rat
CD34	84242-5-RR	242069F8	WB, IHC, IF-P, ELISA	Human
COX-1/Cyclooxygenase-1	84151-4-RR	241373C10	WB, IHC, IF/ICC, ELISA	Human, Mouse, Rat
CTGF	82976-1-RR	230324B12	WB, ELISA	Human
DPP4/CD26	84606-6-RR	242045F5	WB, IHC, IF/ICC, ELISA	Human
Dystrophin	83609-5-RR	240567A3	WB, IHC, IF/ICC, IF-P, FC (Intra), ELISA	Human, Mouse, Rat
EGLN3	82377-1-RR	1O19	WB, IF/ICC, FC (Intra), ELISA	Human, Mouse, Rat
Endoglin/CD105	82993-6-RR	241196G9	WB, IHC, ELISA	Human
Galectin-3	82024-1-RR	4M10	WB, IHC, IF/ICC, IP, ELISA	Human, Mouse
GDF-15	85100-1-RR	242173B11	WB, IHC, ELISA	Human
HIF-1 alpha	80933-1-RR	2K1	WB, IHC, IF/ICC, ELISA, CHIP-qPCR	Human
ICAM-1/CD54	83069-6-RR	230342A2	WB, IF/ICC, ELISA	Human
IGF1R/CD221	84385-3-RR	241678B8	WB, IF/ICC, ELISA	Human
LDLR	82724-1-RR	1O11	WB, IHC, IF/ICC, ELISA	Human, Mouse, Rat
MMP2	81515-5-RR	250316G1	WB, ELISA	Human
MMP3	82984-4-RR	230535G8	WB, IHC, FC (Intra), ELISA	Human, Mouse
MYH7	85322-1-RR	242250F6	WB, IHC, ELISA	Human, Mouse, Rat
NDUFS2	84880-1-RR	242238D4	WB, IHC, FC (Intra), ELISA	Human, Mouse, Rat
eNOS	85020-4-RR	242543E10	WB, ELISA	Human, Mouse
NOX2	82872-1-RR	1B17	WB, IF-P, FC (Intra), ELISA	Human, Mouse, Rat
NRF2, NFE2L2	80593-1-RR	1121	WB, IHC, IF/ICC, FC (Intra), IP, ELISA, CHIP-qPCR	Human
SERCA2/ATP2A2	86050-1-RR	250667D7	WB, IHC, IF/ICC, ELISA	Human, Mouse, Rat
Serum amyloid P component	84402-1-RR	241403F5	WB, ELISA	Human
Thrombopoietin	83549-7-RR	250023B3	WB, IHC, ELISA	Human, Mouse, Rat
Tie-2/CD202b	86010-2-RR	250234F8	WB, ELISA	Human
TIMP1	85959-1-RR	243010H8	WB, IHC, IF/ICC, ELISA	Mouse
TIMP2	85882-2-RR	250231B8	WB, ELISA	Human, Mouse, Rat
Transferrin/TF	81676-1-RR	5O7	WB, IHC, ELISA	Human, Mouse, Rat
transgelin/SM22	83922-2-RR	240864A11	WB, IHC, IF-P, ELISA	Human, Mouse, Rat
VEGFA	81323-2-RR	7H10	WB, IF/ICC, ELISA	Human, Mouse
VEGFR1/Flt-1	85761-4-RR	242311A4	WB, ELISA	Mouse, Rat
VEGFR2/CD309	83049-4-RR	230238D7	WB, IHC, FC, ELISA	Human
VLDLR	85097-1-RR	242385H3	WB, FC (Intra), ELISA	Human
VWF	83854-2-RR	240867D10	WB, IHC, IF-P, ELISA	Human, Rat

Ins1 重组兔单抗

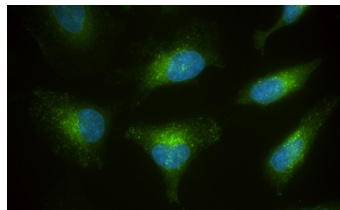
货号: 83867-1-RR



小鼠胰腺组织的IF分析 (绿色: Ins1)

LDLR 重组兔单抗

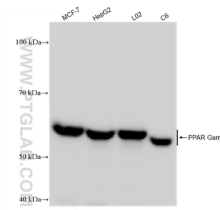
货号: 82724-1-RR



HeLa细胞的IF分析

PPAR Gamma 重组兔单抗

货号: 81490-5-RR



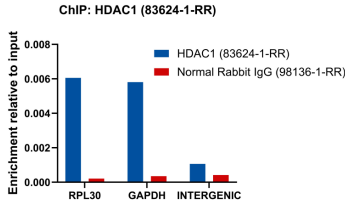
不同细胞裂解液的WB分析

内分泌与代谢研究相关重组兔单抗 (部分)

抗体靶点	货号	克隆号	适用应用	适用物种
ACY1	86204-1-RR	250846D2	WB, ELISA	Human, Mouse, Rat
AGL	86187-1-RR	250767A6	WB, ELISA	Human, Mouse, Rat
AKT3	85769-4-RR	250046E12	WB, ELISA	Human, Mouse, Rat
ALR	84972-4-RR	242557G3	WB, IHC, FC (Intra), ELISA	Human, Mouse, Rat
Angiotensin-like 3/ANGPTL3	83165-3-RR	230498F11	WB, ELISA	Mouse
ANGPTL3	86193-1-RR	250808F7	WB, IHC, IF-Fro, ELISA	Human, Mouse, Rat
ANGPTL4	86006-4-RR	250335F5	WB, ELISA	Mouse, Rat
APOE	83728-4-RR	240786C3	WB, IHC, IF/ICC, ELISA	Mouse, Rat
Apolipoprotein AI	83504-1-RR	240269F1	WB, IHC, IF/ICC, FC (Intra), ELISA	Human
APOM	82871-1-RR	3O19	WB, IF/ICC, FC (Intra), ELISA	Human
ATP4A	83079-5-RR	230313C10	WB, ELISA	Human, Mouse, Rat
ATP7B-Specific	85288-2-RR	242827B3	WB, IHC, IF-P, FC (Intra), ELISA	Human, Mouse, Rat
BCAT2	86367-1-RR	251057E6	WB, IHC, ELISA	Human, Mouse, Rat
BCKDHA	85799-3-RR	250051G11	WB, ELISA	Human, Mouse, Rat
CEBPB	83791-6-RR	240836G6	WB, IHC, IF/ICC, FC (Intra), ELISA	Human
Citrate synthase	86549-1-RR	251433D2	WB, IF/ICC, ELISA	Human, Mouse, Rat
CPE	86111-1-RR	250680F12	WB, IHC, IF/ICC, ELISA	Human, Mouse, Rat
CPT1B	82701-3-RR	242881B6	WB, IHC, IF-P, ELISA	Mouse
CPT2	85013-4-RR	242381C5	WB, IHC, ELISA	Human, Mouse, Rat
CYP17A1	85690-5-RR	243076D8	WB, IHC, ELISA	Human, Mouse, Rat
CYP2C8	85717-1-RR	242948A3	WB, IHC, ELISA	Human, Mouse, Rat
CYP2R1	84378-5-RR	241072F11	WB, FC (Intra), ELISA	Human
DGAT1	82945-1-RR	2300000	WB, ELISA	Human, Mouse, Rat
ENO1	81478-1-RR	2C20	WB, IHC, IF/ICC, ELISA	Human, Mouse, Pig, Rat
ESR2	83447-3-RR	240412F2	IHC, IF/ICC, FC (Intra), ELISA	Human, Mouse
FABP3	86511-3-RR	251339C10	WB, ELISA	Human, Mouse, Pig, Rat
FADS2	84527-4-RR	241863D2	WB, ELISA	Human, Mouse, Rat
FTO	81471-1-RR	4L4	WB, IF/ICC, ELISA	Human
G6PD	86240-1-RR	250831F8	WB, IF/ICC, ELISA	Human, Mouse
GLUT5	85878-1-RR	250150F11	WB, ELISA	Human
Glycerokinase	86604-3-RR	251506G8	WB, ELISA	Human, Mouse, Rat
GSR	84480-2-RR	241934D2	WB, IF/ICC, FC (Intra), ELISA	Human, Mouse
Haptoglobin	83702-5-RR	240785A1	WB, IHC, ELISA	Mouse
Hexokinase 2	85875-1-RR	250190C10	WB, IHC, ELISA	Human, Mouse
IDH2	82117-1-RR	1B1	WB, IHC, IP, ELISA	Human, Mouse, Rat
Ins1	83867-1-RR	240798G4	WB, IHC, IF-P, ELISA	Mouse, Rat
IRS1	82730-10-RR	250510A12	WB, IHC, IF/ICC, ELISA	Human
LDHA-Specific	84198-1-RR	240885F4	WB, IF/ICC, ELISA	Human
LDHB	81963-1-RR	1M20	WB, IF/ICC, FC (Intra), IP, ELISA	Human, Mouse, Rat
LDLR	82724-1-RR	1O11	WB, IHC, IF/ICC, ELISA	Human, Mouse, Rat
LEPR	84464-4-RR	241692G9	WB, ELISA	Human, Mouse
Leptin	83655-3-RR	240368E6	WB, IHC, ELISA	Rat
Methylmalonyl Coenzyme A mutase/MUT	84879-5-RR	242198F11	WB, IHC, FC (Intra), ELISA	Human, Mouse, Rat
MSRA	86358-1-RR	251025H2	WB, IF/ICC, ELISA	Human, Rat
NPL	85608-3-RR	243037E2	WB, ELISA	Human, Mouse, Rat
NRF2, NFE2L2	80593-1-RR	1121	WB, IHC, IF/ICC, FC (Intra), IP, ELISA, ChIP-qPCR	Human
PCSK9	84172-4-RR	241395G1	WB, IF/ICC, FC (Intra), ELISA	Human
PEMT	85099-1-RR	242150D5	WB, IHC, ELISA	Human, Mouse
Perilipin 1	83905-4-RR	240994H1	WB, IP, ELISA	Human, Mouse
PFKM	84281-5-RR	241598B2	WB, IHC, IF/ICC, ELISA	Human, Mouse
PKM2-specific	84451-1-RR	241431E8	WB, IHC, IF/ICC, FC (Intra), ELISA	Human
PPAR Gamma	81490-5-RR	230374A3	WB, IHC, IF-P, FC (Intra), ELISA	Human, Mouse, Rat
PRDM16	83872-1-RR	240662D3	WB, IHC, IF/ICC, ELISA	Human
PSAP	86043-2-RR	250312D3	WB, IF/ICC, ELISA	Mouse
SCD1	81468-5-RR	241487E12	WB, IF/ICC, FC (Intra), ELISA	Human
SLC7A5	84178-5-RR	241476D5	WB, IHC, IF/ICC, FC (Intra), ELISA	Human
SREBF1	82684-3-RR	1P4	WB, FC (Intra), ELISA	Human
TORC2	85150-4-RR	242808B6	WB, FC (Intra), ELISA	Human
UCP1	83870-1-RR	240782F3	WB, IHC, IF-P, ELISA	Human, Mouse
URAT1	82964-1-RR	230204B3	WB, FC (Intra), ELISA	Human, Mouse, Rat

HDAC1 重组兔单抗

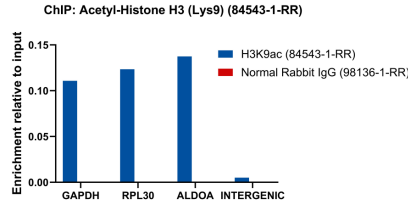
货号: 83624-1-RR



K-562细胞的ChIP-qPCR分析

Acetyl-Histone H3 (Lys9) 重组兔单抗

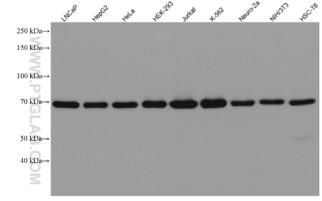
货号: 84543-1-RR



HeLa细胞的ChIP-qPCR分析

METTL3 重组兔单抗

货号: 80323-1-RR



不同细胞裂解液的WB分析

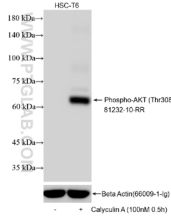
表观遗传学研究相关重组兔单抗 (部分)

抗体靶点	货号	克隆号	适用应用	适用物种
AHR	83369-6-RR	240325G9	IHC, IF/ICC, FC (Intra), ELISA	Human
AHR	83369-5-RR	240325G8	WB, IHC, ELISA	Human
ALKBH5	82083-1-RR	2K9	WB, IF/ICC, ELISA	Human, Mouse, Rat
ATF4	81798-2-RR	230306B5	WB, IF/ICC, FC (Intra), ELISA, ChIP-qPCR	Human
ATF4	81798-1-RR	5N3	WB, IHC, IP, ELISA, ChIP-qPCR	Human, Mouse
ATF6	82278-1-RR	20B	WB, IP, ELISA	Human
BRCA1	83390-6-RR	240285E10	WB, FC (Intra), ELISA	Human, Mouse, Rat
CLOCK	82829-1-RR	1I23	WB, IHC, ELISA	Human, Mouse, Rat
c-MYC	80845-1-RR	2B17	WB, IHC, IF/ICC, FC (Intra), ELISA, ChIP-qPCR	Human, Mouse
DNA ligase III/LIG3	85409-4-RR	242870C6	WB, ELISA	Human
DNA-PKcs	85370-2-RR	242676E6	WB, IHC, IF/ICC, FC (Intra), ELISA	Human
DNMT1	82678-2-RR	240302E2	WB, FC (Intra), ELISA	Human, Rat
DNMT3A	81474-6-RR	242257A9	IHC, IF/ICC, FC (Intra), ELISA	Human
DNMT3A	81474-5-RR	242257E1	WB, ELISA	Human, Mouse, Rat
EZH2	84824-3-RR	242309F9	WB, IF/ICC, ELISA	Human
EZH2	84824-2-RR	242309F11	WB, IHC, IF/ICC, ELISA	Human, Mouse, Rat
FTO	81471-1-RR	4L4	WB, IF/ICC, ELISA	Human
HDAC1	83624-1-RR	240614A3	WB, IHC, IF/ICC, FC (Intra), ELISA	Human, Mouse
HDAC3	81211-1-RR	2N1	WB, IHC, ELISA	Human, Mouse, Rat
Histone H1.0	83993-4-RR	241147F6	IHC, IF/ICC, ELISA	Human
Histone H1.0	83993-1-RR	241147D2	WB, FC (Intra), ELISA	Human, Mouse, Rat
Histone H2A.X	83307-3-RR	250032F5	WB, IHC, ELISA, ChIP-qPCR	Human, Mouse, Rat
Acetyl-Histone H2A (Lys13)	86691-1-RR	251322D1	WB, Dot Blot, ELISA	Human, Mouse
Acetyl-Histone H2A (Lys9)	83041-1-RR	230349B1	WB, IHC, IF/ICC, Dot Blot, ELISA, ChIP-qPCR	Human, Mouse
Phospho-Histone H2A.X (Ser139)	83307-2-RR	5N19	WB, IHC, IF/ICC, FC (Intra), ELISA	Human, Mouse, Rat
Acetyl-Histone H2B (Lys120)	84551-1-RR	241556E7	WB, IF/ICC, Dot Blot, ELISA, ChIP-qPCR	Human, Mouse
Acetyl-Histone H2B (Lys15)	83171-7-RR	250366G3	WB, Dot Blot, ELISA, ChIP-qPCR	Human, Mouse
Acetyl-Histone H2B (Lys16)	84446-1-RR	241194H2	WB, IF/ICC, Dot Blot, ELISA, ChIP-qPCR	Human, Mouse, Rat
Histone H3	81984-2-RR	241079B2	WB, IHC, IF/ICC, FC (Intra), ELISA, ChIP-qPCR	Human, Mouse, Rat
Acetyl-Histone H3 (Lys14)	84543-2-RR	251230E11	WB, Dot Blot, ELISA	Human, Mouse
Acetyl-Histone H3 (Lys18)	82832-1-RR	2E3	WB, ChIP, Dot Blot, ELISA, ChIP-qPCR	Human, Mouse, Rat
Acetyl-Histone H3 (Lys23)	82838-2-RR	241137E4	IHC, IF/ICC, Dot Blot, ELISA, ChIP-qPCR	Human, Mouse, Rat
Acetyl-Histone H3 (Lys36)	82828-14-RR	250370A9	WB, Dot Blot, ELISA, ChIP-qPCR	Human, Mouse
Acetyl-Histone H3 (Lys9)	84543-1-RR	241596F9	WB, IF/ICC, ChIP, Dot Blot, ELISA, ChIP-qPCR	Human
Acetyl-Histone H4 (Lys12)	83095-1-RR	1D18	WB, IHC, IF/ICC, Dot Blot, ELISA, ChIP-qPCR	Human, Mouse, Rat
Mono-Methyl-Histone H3 (Lys36)	82825-2-RR	241138B6	WB, IF/ICC, FC (Intra), Dot Blot, ELISA, ChIP-qPCR	Human, Mouse, Rat
Mono-Methyl-Histone H3 (Lys4)	84740-1-RR	241940G8	WB, IF/ICC, Dot Blot, ELISA, ChIP-qPCR	Human, Mouse
Mono-Methyl-Histone H3 (Lys9)	82821-6-RR	3C23	WB, Dot Blot, ELISA, ChIP-qPCR	Human, Rat
Di-Methyl-Histone H3 (Arg2)	84702-1-RR	241896D7	IHC, IF/ICC, FC (Intra), Dot Blot, ELISA, ChIP-qPCR	Human, Mouse, Rat
Di-Methyl-Histone H3 (Lys56)	82828-12-RR	243027A1	WB, Dot Blot, ELISA	Human, Mouse, Rat
Di-Methyl-Histone H4 (Arg3)	82859-1-RR	1E21	WB, Dot Blot, ELISA	Human, Mouse, Rat
Phospho-Histone H3 (Ser10)	82828-10-RR	242921B1	WB, IHC, IF/ICC, ELISA, ChIP-qPCR	Human, Mouse, Rat
Phospho-Histone H3 (Ser28)	82828-15-RR	250369A1	WB, ELISA	Human
Phospho-Histone H3 (Thr3)	84739-1-RR	241897G3	WB, IF/ICC, FC (Intra), ELISA, ChIP-qPCR	Human, Mouse, Rat
HNRNP2B1	83773-7-RR	240831E3	WB, IHC, IF/ICC, FC (Intra), ELISA	Human, Mouse, Rat
IGF2BP2	82757-2-RR	6L8	WB, IHC, IP, ELISA	Human, Mouse, Rat
IGF2BP3	81805-1-RR	1L11	WB, IHC, IP, ELISA	Human, Mouse, Rat
KEAP1	80744-1-RR	5018	WB, IHC, IF/ICC, IP, ELISA	Human, Mouse, Rat
MARS	83690-4-RR	240648G4	WB, IHC, IF/ICC, ELISA	Human, Mouse, Rat
MAX	82958-6-RR	230215D9	WB, IF/ICC, ELISA	Human, Mouse, Rat
MCM2	84511-5-RR	241968F7	WB, IHC, IF/ICC, ELISA	Human, Mouse, Rat
MCM2	84511-2-RR	241968D3	WB, IHC, IF/ICC, FC (Intra), ELISA	Human
METTL3	80323-1-RR	2I9	WB, IHC, IF/ICC, IF-P, ELISA	Human, Mouse, Rat
NSUN2	82894-7-RR	230186H8	WB, IHC, IF/ICC, FC (Intra), ELISA	Human
PRMT5	82750-3-RR	250553F4	WB, IHC, IF/ICC, ELISA	Human, Mouse, Rat
PRMT5	82750-2-RR	250553B5	WB, IHC, IF/ICC, IP, ELISA	Human, Mouse, Rat
Progesterone Receptor	85112-4-RR	242686G1	WB, IHC, IF/ICC, ELISA	Human
RAD50	84969-4-RR	242541A5	WB, IHC, ELISA	Human, Mouse, Rat
REST	84846-4-RR	241789D3	WB, IF/ICC, ELISA, ChIP-qPCR	Human
56 Ribosomal protein	80208-1-RR	6L9	WB, IF/ICC, ELISA	Human, Mouse, Rat, Zebrafish
SETDB1	83772-6-RR	240805F2	IHC, IF/ICC, FC (Intra), ELISA	Human
SETDB1	83772-5-RR	240805D7	WB, ELISA	Human, Mouse
SIRT3	82210-1-RR	2P6	WB, IHC, ELISA	Human, Mouse, Pig, Rat
SIRT5	82246-1-RR	7L20	WB, IF/ICC, ELISA	Human
SIRT7	84805-4-RR	242167C9	WB, IHC, IP, ELISA	Human, Rat
TOP2A	82738-4-RR	1J18	WB, IF/ICC, IP, ELISA	Human
XRCC5/Ku80	80325-6-RR	240301G6	WB, IHC, IF/ICC, FC (Intra), ELISA	Human
YTHDC2	83970-1-RR	241123A9	WB, IHC, FC (Intra), ELISA	Human, Mouse
YTHDF1	80876-2-RR	241445B10	WB, IHC, IF/ICC, IF-P, FC (Intra), ELISA	Human, Mouse, Rat
YTHDF2	81340-1-RR	3L6	WB, IF/ICC, IP, ELISA	Human, Mouse, Rat
YY1	82712-3-RR	1B5	WB, IF/ICC, ELISA, ChIP-qPCR	Human, Mouse



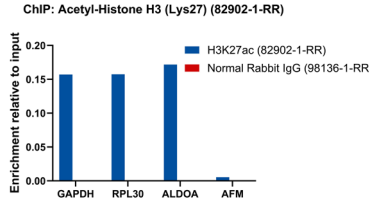
Phospho-AKT (Thr308) 重组单抗

货号: 81232-10-RR



Calyculin A处理与未处理HSC-T6细胞的WB分析

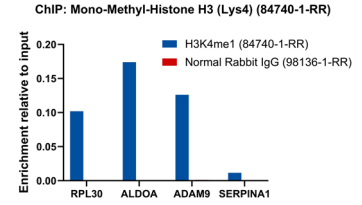
Acetyl-Histone H3 (Lys27) 重组单抗

货号: 82902-1-RR 2

HeLa细胞的ChIP-qPCR分析

Mono-Methyl-Histone H3 (Lys4) 重组单抗

货号: 84740-1-RR



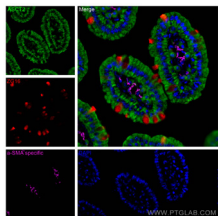
HeLa细胞的ChIP-qPCR分析

热门修饰性重组单抗 (部分)

抗体靶点	货号	克隆号	适用应用	适用物种
Acetyl-Histone H3 (Lys27)	82902-1-RR	1M16	WB, IHC, IF/ICC, Dot Blot, ELISA, ChIP-qPCR	Human, Mouse, Rat
Acetyl-Histone H3 (Lys9)	84543-1-RR	241596F9	WB, IF/ICC, ChIP, Dot Blot, ELISA, ChIP-qPCR	Human
Mono-Methyl-Histone H3 (Lys4)	84740-1-RR	241940G8	WB, IF/ICC, Dot Blot, ELISA, ChIP-qPCR	Human, Mouse, Rat
Phospho-4EBP1 (Thr37)	81812-4-RR	240535G3	WB, ELISA	Human
Phospho-ACC1 (Ser79)	80281-2-RR	240235G11	WB, IF/ICC, FC (Intra), ELISA	Human, Mouse
Phospho-AKT (Ser473)	80455-1-RR	2E17	WB, IHC, IF, FC (Intra), ELISA	bovine, Human, Mouse, Pig, Rabbit, Rat
Phospho-AKT (Thr308)	81232-10-RR	242063B2	WB, FC (Intra), ELISA	Human, Mouse, Rat
Phospho-AKT1 (Ser473)	80462-1-RR	2M10	WB, FC (Intra), ELISA	Human, Mouse
Phospho-AMPK Beta 1 (Ser182)	83924-1-RR	240628B1	WB, ELISA	Human, Mouse, Pig, Rat
Phospho-BCL2 (Ser70)	80771-2-RR	230061A8	WB, IHC, FC (Intra), ELISA	Human
Phospho-Beta Catenin (Ser33)	80067-1-RR	3K1	WB, IF, FC (Intra), ELISA	Human, Mouse, Rat
Phospho-Caspase 9 (Ser196)	80346-1-RR	3P16	WB, IF/ICC, ELISA	Human, Mouse
Phospho-CDK1 (Tyr15)	82751-5-RR	251130A5	WB, ELISA	Human
Phospho-CHEK2 (Thr68)	81740-1-RR	1L2	WB, FC (Intra), ELISA	Human
Phospho-CREB1 (Ser133)	81871-1-RR	5H5	WB, IHC, ELISA, ChIP-qPCR	Human, Mouse
Phospho-c-SRC (Ser17)	80706-3-RR	250845F12	WB, ELISA	Human
Phospho-c-SRC (Tyr530)	80706-2-RR	241477A4	WB, ELISA	Human, Mouse
Phospho-ERK1/2 (Thr202/Tyr204)	80031-1-RR	8D12	WB, IHC, IF, FC (Intra), ELISA	Human, Mouse, Rat
Phospho-FAK (Tyr397)	83933-1-RR	240630F8	WB, IF/ICC, ELISA	Human
Phospho-Histone H2A.X (Ser139)	83307-2-RR	5N19	WB, IHC, IF/ICC, FC (Intra), ELISA	Human, Mouse, Rat
Phospho-Histone H3 (Ser10)	82828-10-RR	242921B1	WB, IHC, IF/ICC, ELISA, ChIP-qPCR	Human, Mouse, Rat
Phospho-IkB Alpha (Ser32/36)	82349-1-RR	1G21	WB, IHC, IF, FC (Intra), ELISA	Human, Mouse, Pig, Rat, Zebrafish
Phospho-IkB Beta (Thr19/Ser23)	84403-1-RR	241061B2	WB, FC (Intra), ELISA	Human, Rat
Phospho-IRF3 (Ser396)	80519-2-RR	241522A6	WB, FC (Intra), ELISA	Human
Phospho-JNK (Thr183/Tyr185)	80435-3-RR	243163F8	WB, ELISA	Human, Mouse
Phospho-JNK (Tyr185)	80024-1-RR	2G8	WB, IHC, IF/ICC, FC (Intra), ELISA	Human, Mouse, Pig, Rat, sheep, Zebrafish
Phospho-JUN (Ser63)	84147-1-RR	240965B7	WB, ELISA, ChIP-qPCR	Human, Mouse
Phospho-JUN (Ser73)	80086-1-RR	4A18	WB, IHC, IF/ICC, FC (Intra), ELISA, ChIP-qPCR	Human, Mouse, Rat
Phospho-LCK (Tyr505)	85679-1-RR	242450G6	WB, ELISA	Human
Phospho-MEK1 (Ser298)	84691-1-RR	241719G5	WB, FC (Intra), ELISA	Human
Phospho-mTOR (Ser2448)	80596-1-RR	3L18	WB, IF/ICC, FC (Intra), ELISA	bovine, Human, Mouse, Rat
Phospho-Myosin Light Chain 2 (Thr18/Ser19)	82717-1-RR	1G10	WB, ELISA	Human, Mouse
Phospho-NF-κB p65 (Ser468)	82335-1-RR	6N1	WB, IHC, IF, FC (Intra), ELISA	Human, Mouse, Pig, Rat
Phospho-NF-κB p65 (Ser536)	80379-2-RR	240777D9	WB, FC (Intra), ELISA	Human, Mouse, Rat
Phospho-p38 MAPK (Thr180/Tyr182)	81212-2-RR	242308D3	WB, IHC, ELISA	Human, Mouse
Phospho-P53 (Ser15)	80195-1-RR	2J21	WB, IF/ICC, FC (Intra), ELISA, ChIP-qPCR	Human
Phospho-P53 (Ser392)	80077-2-RR	241575F6	WB, FC (Intra), ELISA	Human
Phospho-PKC Alpha (Thr638)	81575-2-RR	241844A10	WB, FC (Intra), ELISA	Human
Phospho-RB1 (Ser780)	84692-1-RR	241827H7	WB, ELISA	Human
Phospho-RPS6KA1 (Ser380)	80108-1-RR	7F23	WB, IHC, IF/ICC, FC (Intra), ELISA	Human, Mouse
Phospho-RPS6KA1 (Thr359/Ser363)	81475-1-RR	3O10	WB, FC (Intra), ELISA	Human, Mouse
Phospho-S6 Ribosomal protein (Ser235/236)	80130-2-RR	241018D12	WB, IF/ICC, FC (Intra), ELISA	Human, Mouse, Rat
Phospho-S6 Ribosomal protein (Ser236)	80206-1-RR	7K17	WB, FC (Intra), ELISA	Human, Mouse
Phospho-S6 Ribosomal protein (Ser240/244)	80575-3-RR	242048C2	WB, IF/ICC, FC (Intra), ELISA	Human, Mouse, Rat
Phospho-SMAD1 (Ser187)	85388-4-RR	250292C10	WB, ELISA	Human
Phospho-SMAD1 (Ser195)	80257-1-RR	1K6	WB, ELISA	Human
Phospho-SMAD1 (Ser214)	81433-1-RR	3K8	WB, ELISA	Human, Mouse
Phospho-SMAD2 (Ser465/467)/SMAD3 (Ser423/425)	80427-2-RR	240826D11	WB, IF/ICC, FC (Intra), ELISA, ChIP-qPCR	Human, Mouse, Rat
Phospho-SMAD9 (Ser465/467)	80144-2-RR	240470A12	WB, ELISA	Human
Phospho-STAT1 (Tyr701)	82674-10-RR	1C5	WB, FC (Intra), ELISA, ChIP-qPCR	Human
Phospho-STAT3 (Ser727)	80199-2-RR	240778A12	WB, FC (Intra), ELISA, ChIP-qPCR	Human, Mouse
Phospho-TAK1 (Thr187)	81785-1-RR	206	WB, FC (Intra), ELISA	Human
Phospho-TAU (Ser202/Thr205)	82568-1-RR	4A6	WB, ELISA	Human, Mouse
Phospho-TAU (Ser404)	81383-1-RR	516	WB, IF, ELISA	Human, Mouse
Phospho-TAU (Thr231)	80101-7-RR	240632B1	WB, IHC, FC (Intra), ELISA	Human, Mouse
Phospho-TBK1 (Ser172)	82382-2-RR	241787G12	WB, FC (Intra), ELISA	Human
Phospho-TDP43 (Ser409/410)	80007-1-RR	6M10	WB, IHC, IF, ELISA	Human, Mouse, Zebrafish
Phospho-Tyrosine	86398-1-RR	250495G7	WB, IF/ICC, ELISA	-
Phospho-ULK1 (Ser556)	80218-1-RR	2F5	WB, IHC, IF, FC (Intra), ELISA	goat, Human, Mouse, Rat
Phospho-YAP1 (Ser127)	80694-2-RR	240779G4	WB, FC (Intra), ELISA	Human

CoraLite® Plus 647 偶联 α-SMA 重组兔单抗

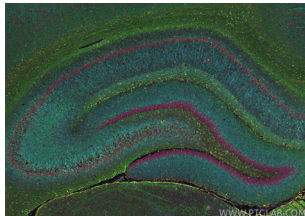
货号: CL647-80008



小鼠小肠组织的IF分析 (洋红色: CL647-α-SMA)

CoraLite® 532 偶联 GFAP 重组兔单抗

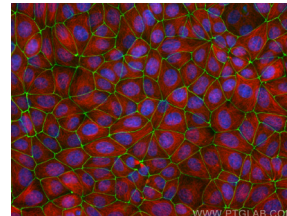
货号: CL532-81063



大鼠大脑组织的IF分析 (金色: CL532-GFAP; 红色: CL594-NeuN; 绿色: CL488-MBP; 洋红色: CL647-MAP2)

CoraLite® Plus 488 偶 ZO-1 重组兔单抗

货号: CL488-82870-7



MCF7细胞的IF分析 (绿色: CL488-ZO-1)

热门直标重组抗体 (部分)

抗体靶点	货号	偶联荧光染料	克隆号	适用应用	适用物种
Alpha smooth muscle actin specific	CL647-80008	CL647	5H7	IF-P, IF-Fro	Chicken, Human, Mouse, Pig, Rat, Zebrafish
Alpha Tubulin	CL594-80762	CL594	1G7	IF/ICC, FC (Intra)	Human, Mouse, Rat
ALPL	CL750-82915-2	CL750	230212D5	WB	Human
APOB	CL488-84047	CL488	240884H4	IF-P	Human, Mouse
ATF4	CL488-81798-2	CL488	230306B5	IF/ICC	Human
AURKA	CL488-82906	CL488	230087H3	IF/ICC	Human
Cathepsin D	CL488-83743-5	CL488	240775G2	IF/ICC	Human
CD107b / LAMP2	CL594-84474-5	CL594	241893A7	IF/ICC	Mouse
CD14	CL488-83297-5	CL488	240225F1	IF/ICC	Mouse
CD206	CL594-81525	CL594	1G15	IF-P	Human, Pig
CD206	CL488-81525	CL488	1G15	IF-P	Human, Pig
CD31	CL488-80530	CL488	4N13	IF/ICC	Human, Mouse
CD45	CL555-80297	CL555	6O19	IF-P	Human, Mouse, Rat
CD45	CL488-83396-5	CL488	240356G10	IF/ICC	Mouse
CD68	CL488-83014-5	CL488	230504G10	IF-P	Mouse, Rat
CD9	CL488-84142-2	CL488	240830A6	IF/ICC	Human
CD9	CL488-84801-4	CL488	242432C2	IF/ICC	Mouse
CDK9	CL488-83662-7	CL488	240600D7	IF/ICC	Human
c-MYC	CL488-80845	CL488	2B17	IF/ICC	Human
Connexin 43	CL488-80543	CL488	3O6	IF-P	Human, Mouse, Pig, Rat
Cyclin A2	CL488-82148	CL488	1C23	IF/ICC	Human, Mouse
Cyclin E1	CL488-82700-8	CL488	240136G9	IF/ICC, FC (Intra)	Human
Cytochrome c	CL488-83276	CL488	230503E10	IF/ICC	Human, Mouse
DRP1 (C-terminal)	CL488-81561	CL488	2A19	IF/ICC	Human, Mouse, Rat
Dystrophin	CL488-83609-5	CL488	240567A3	IF/ICC, IF-P	Human, Mouse
Endoglin/CD105	CL488-82993-5	CL488	230047E8	IF/ICC	Human
F4/80	CL488-84538	CL488	241959B6	IF-P	Mouse
FADD	CL488-84619-5	CL488	241976A11	IF/ICC	Human
Fas/CD95	CL488-83400-5	CL488	240340E11	IF/ICC	Human
FIS1	CL488-82248	CL488	6N15	IF/ICC, FC (Intra)	Human, Mouse, Rat
Galectin-3	CL488-82024	CL488	4M10	IF/ICC, FC (Intra)	Human, Mouse
GFAP	CL532-81063	CL532	4C6	IF-P	Human, Mouse, Pig, Rat
GFAP	CL488-81063	CL488	4C6	IF-P, IF-Fro	Human, Mouse, Pig, Rat
Granzyme A	CL488-84583-3	CL488	241979B8	IF/ICC	Human
HDAC1	CL488-83624	CL488	240614A3	IF/ICC	Human
IBA1	CL647-81728	CL647	4D5	IF-P, FC (Intra)	Human, Mouse, Rat
Ins1	CL488-83867	CL488	240798G4	IF-P	Mouse, Rat
Ki-67	CL647-84192-4	CL647	241499E7	IF/ICC	Human
L1CAM/CD171	CL488-84034-5	CL488	240978A7	IF/ICC	Human
Lamin A/C	CL488-81042	CL488	5116	IF/ICC	Human, Mouse, Rat
Lamin B1	CL750-80906	CL750	5H10	WB	Human, Mouse, Rat
MAP2	CL647-84306-3	CL647	241653E9	IF-P	Human, Mouse, Rat
MMP1	CL488-83114-2	CL488	230343G1	IF/ICC	Human
MMP2	CL488-81515-2	CL488	240131F5	IF/ICC	Human
N-cadherin	CL488-82968	CL488	230259H5	IF/ICC	Human
NCAM1/CD56	CL488-83365-6	CL488	240078C9	IF/ICC	Human
NF-κB p65	CL488-80979	CL488	4C7	IF/ICC, FC (Intra)	Human, Mouse, Rat
PARP1	CL488-80174	CL488	3N19	IF-P	Human, Mouse, Rat
PAX6	CL488-84345-5	CL488	241521G1	IF-P	Human, Mouse
PCNA	CL594-81302-6	CL594	240306B9	IF-P	Human, Mouse, Rat
Piezo1 (extracellular domain)	CL488-82625-4	CL488	4B15	IF/ICC	Human
PIN1	CL488-81857	CL488	5N20	IF/ICC, FC (Intra)	Human, Mouse, Pig, Rat
PINK1	CL488-81991-4	CL488	240449E7	IF-P, FC (Intra)	Human, Mouse, Rat
PRC1	CL488-84041-2	CL488	241216H2	IF/ICC	Human
SNAP25	CL488-83259-5	CL488	240069F12	IF/ICC	Human, Mouse, Rat
STAT1	CL488-82016	CL488	2F16	IF/ICC	Human, Mouse, Rat
Synaptophysin	CL488-82900	CL488	2H14	IF/ICC, IF-P	Human, Mouse, Rat
Synaptotagmin-1	CL488-83637-4	CL488	240589F6	IF/ICC	Human, Mouse, Rat
Syntaxin 1B	CL488-83298	CL488	240156B9	IF-P	Human, Mouse
Syntaxin 6	CL647-84627-5	CL647	242100A9	IF/ICC	Human, Mouse, Rat
TDP-43 (for IF/FC)	CL594-80002	CL594	16A22	IF/ICC	Human, Mouse, Rat
TIGIT	CL532-83545	CL532	240423D3	IF-P	Human, Mouse, Rat
TMEM173/STING	CL647-80165	CL647	7K7	IF-P	Human, Mouse, Rat
TOM20	CL488-80501	CL488	1D22	IF/ICC, FC (Intra)	Chicken, Human, Mouse, Pig, Rat, Zebrafish
VE-cadherin/CD144	CL488-83766-2	CL488	240755D8	IF/ICC	Human
ZO-1	CL488-82870-7	CL488	240150D7	IF/ICC	Human, Mouse, Rat

CL染料: CoraLite®和CoraLite® Plus染料是来自Proteintech的明亮荧光染料, 具有很高的光稳定性和极小的荧光渗透。这些染料在光谱上与Alexa Fluor®染料相似, 但更稳定。

Proteintech 的 Multi-rAb® 重组兔多抗由识别同一蛋白不同表位的多个重组兔单抗组成的抗体混合物，兼具多抗与重组单抗的优势，既有多抗的高灵敏度，也有重组单抗的高特异性和高批次间一致性，且可稳定供应。

高灵敏度

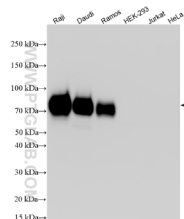
高特异性

高批间一致性

高数据重复性

CD86 重组兔多抗

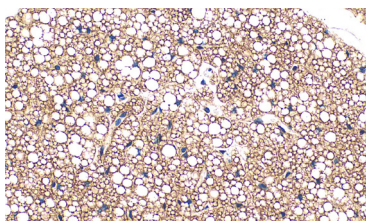
货号：RMX00027



不同细胞裂解液的WB分析

UCP1 重组兔多抗

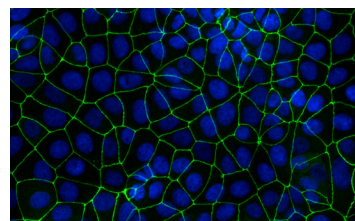
货号：RMX00036



小鼠棕色脂肪组织的IHC分析

ZO-1 重组兔多抗

货号：RMX00002



MCF-7细胞的IF分析

Multi-rAb® 重组兔多抗产品

抗体靶点	货号	适用应用	适用物种
ACOX1	RMX00007	WB, IHC, IF/ICC, IP, ELISA	Human, Mouse, Rat
APOB	RMX00011	WB, IHC, IF-P, IP, ELISA	Human, Mouse
ATP5A1	RMX00023	WB, IHC, IF/ICC, IP, ELISA	Human, Mouse, Rat
CD107a / LAMP1	RMX00025	WB, IF/ICC, IP, ELISA	Human
CD86	RMX00027	WB, IF/ICC, IP, ELISA	Human
CD9	RMX00018	WB, IHC, IF/ICC, ELISA	Human
Cleaved Caspase 3/P17/P19	RMX00003	WB, IHC, IF/ICC, ELISA	Human, Mouse
EIF2S1	RMX00004	WB, IF/ICC, IP, ELISA	Human, Mouse, Rat
GSK3B	RMX00019	WB, IHC, IF/ICC, ELISA	Human, Mouse, Rat
IL-1 beta	RMX00024	WB, IP, ELISA	Human
JUNB	RMX00032	WB, IHC, IF/ICC, ELISA	Human, Mouse, Rat
KIF5A	RMX00017	WB, IHC, IF/ICC, IP, ELISA	Human, Mouse, Rat
MAEA	RMX00005	WB, IF/ICC, IP, ELISA	Human
p38 MAPK	RMX00006	WB, IHC, IF/ICC, IP, ELISA	Human, Mouse
PFKM	RMX00037	WB, IHC, IF/ICC, ELISA	Human, Mouse, Rat
RAB7A	RMX00029	WB, IHC, IF/ICC, ELISA	Human, Mouse, Rat
RHOA	RMX00030	WB, IHC, IF/ICC, ELISA	Human, Mouse, Rat
SAT1	RMX00008	WB, IHC, IF/ICC, IP, ELISA	Human, Mouse
SIRT1	RMX00009	WB, IHC, IF/ICC, IP, ELISA	Human, Mouse, Rat
SMAD2	RMX00035	WB, IHC, IF/ICC, ELISA	Human, Mouse, Rat
STMN2	RMX00021	WB, IHC, IF/ICC, IP, ELISA	Human, Mouse, Rat
TSG101	RMX00026	WB, IHC, IF/ICC, IP, ELISA	Human, Mouse, Rat
UCP1	RMX00036	WB, IHC, ELISA	Human, Mouse
VDAC3	RMX00001	WB, IHC, IP, ELISA	Human, Mouse, Rat
ZO-1	RMX00002	WB, IHC, IF/ICC, IP, ELISA	Human, Mouse, Rat

重组流式抗体

Proteintech 可提供多种经过流式细胞术验证和优化的重组流式抗体，覆盖 CD 标记物、细胞因子及细胞内蛋白等热门靶点。

Fc 沉默新型骨架系列

传统骨架系列

可大量稳定供应

提供 PBS-only 级别

FcZero-rAb® 新型骨架重组流抗

专利技术 — 流式抗体的“源头创新”

① Fc 沉默：

FcZero-rAb® 重组流抗骨架已封闭 Fc 受体结合位点，流式应用中无需 Fc 受体封闭试剂，省时省力。

② 定点定量标记：

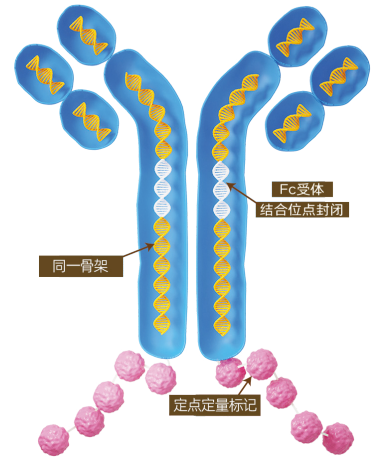
FcZero-rAb® 重组流抗以不产生空间位阻的方式定点定量结合染料，确保抗体识别活性及标记高重复性。

③ 同一骨架：

FcZero-rAb® 重组流抗骨架相同，仅使用一种同型对照即可，大大降低实验设计难度及成本。

④ 高批间一致性：

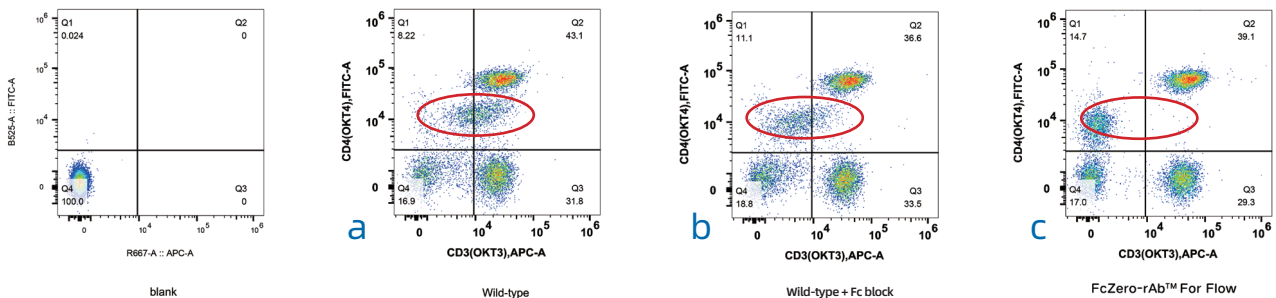
FcZero-rAb® 为基因工程抗体，从 DNA 层面确保抗体高度一致。



FcZero-rAb® 重组流抗完全消除了与人及小鼠 FcγR 结合（BLI 法测定亲和力）

Human Fc 受体类型	Rabbit IgG-wild type	FcZero® 沉默抗体	Mouse Fc 受体类型	Rabbit IgG-wild type	FcZero® 沉默抗体
	是否与其结合	是否与其结合		是否与其结合	是否与其结合
FcγRI/CD64	√	×	FcγRI/CD64	√	×
FcγRIIa/32a(167R)	√	×	FcγRIIB	√	×
FcγRIIa/32a(167H)	√	×	FcγRIII/CD16	√	×
FcγRIIb/32b	√	×	FcγRIV	√	×
FcγRIIIa/CD16a(176F)	√	×			
FcγRIIIa/CD16a(176V)	√	×			
FcγRIIIb/CD16b(NA1 allotype)	√	×			
FcγRIIIb/CD16b(NA2 allotype)	√	×			

FcZero-rAb® 重组流抗 Fc 沉默性能比 Fc 受体封闭剂效果更佳



使用不同anti-CD3及anti-CD4流抗对人PBMCs进行染色，新型FcZero-rAb®重组流抗无需阻断试剂即可达到无Fc受体结合背景。

热门 FcZero-rAb® 新型骨架重组流式抗体 (部分)

可提供 20 余种荧光染料偶联

种属	分类	抗体靶点	克隆号	货号
Human	白细胞共同抗原	CD45	241670E10	FcA98117
	B细胞	CD19	4G7	FcA65562
		CD20	2H7	FcA65575
		CD79a	241299F3	FcA98072
		CD79a	HM57	FcA65610
	浆细胞	CD38	241246F9	FcA98148
		CD138/Syndecan-1	240422C4	FcA98051
	T细胞	CD2	241222E2	FcA98134
		CD2	TS1/8	FcA65565
		CD2	TS1/8	FcA65565
		CD3	OKT3	FcA65569
		CD3	UCHT1	FcA65570
		CD3	SP34	FcA98319-2
		CD4	240427E12	FcA98042
		CD4	OKT4	FcA65603
		CD5	240428A12	FcA98054
		CD5	L17F12	FcA65599
		CD5	UCHT2	FcA65609
		CD8	SK1	FcA65630
		CD8a	OKT8	FcA65506
		CD8b	241326A7	FcA98103
		CD25/IL-2RA	BC96	FcA65620
		CD69	241552F1	FcA98173
		PD-1/CD279	240724G11	FcA98068
		PD-1/CD279	EH12.2H7	FcA65586
		TIGIT	240423C7	FcA98023-2
		TIM3	241422H1	FcA98115
	树突状细胞	CD83	HB15e	FcA65581
		HLA-DR	L243	FcA65560
		CD209	240907A4	FcA98156
	NK细胞	CD16	3G8	FcA65612
		NCAM1/CD56	240078A7	FcA98033
	单核细胞	CD94	241704E11	FcA98172
		CD14	230332D7	FcA98040
		CD14	261C	FcA65616
	巨噬细胞	CD16	3G8	FcA65612
		CD64	10.1	FcA65572
		CD68	KP1	FcA65593
		CD86	240429C6	FcA98043
	造血干细胞	CD86	BU63	FcA65592
		CD163	GHI/61	FcA65561
	造血干细胞	CD38	241246F9	FcA98148
		CD90	241290B2	FcA98126

种属	分类	抗体靶点	克隆号	货号	
Human	间充质干细胞	STRO-1	STRO-1	FcA65585	
		CD44	F10-44-2	FcA65608	
		CD44	242345G9	FcA98333-3	
		CD73	AD2	FcA65564	
		Endoglin/CD105	241196D9	FcA98013	
	巨核细胞/血小板	CD42b	AK2	FcA65588	
		CD62P	AK4	FcA65587	
	中性粒细胞	CD11b	ICRF44	FcA65582	
		CD16	3G8	FcA65612	
	Mouse	白细胞共同抗原	CD45	240356D1	FcA98035
T细胞		CD3	17A2	FcA65659	
		CD3e	145-2C11	FcA65651	
		CD4	RM4-4	FcA65655	
		CD5	240244A7	FcA98038	
		CD25/IL-2RA	242494H5	FcA98288	
		CTLA-4/CD152	241100B8	FcA98147	
		LAG-3/CD223	241294E11	FcA98167	
		CD279/PD-1	RMP1-30	FcA65665	
		树突状细胞	MHC Class II (I-A/I-E)	M5/114.15.2	FcA65663
		单核细胞	CD11b	M1/70	FcA65672
巨噬细胞		F4/80	241959G4	FcA98236	
		CD68	230504G5	FcA98029	
		CD80	241371E12	FcA98158	
		CD86	230476B8	FcA98025	
		CD86	GL1	FcA65673	
		CD206	240344D12	FcA98031	
		造血干细胞	CD117/c-Kit	240246C11	FcA98041
间充质干细胞		CD44	242666F8	FcA98359-2	
		CD73	241541G9	FcA98199	
	Endoglin/CD105	242305E7	FcA98290		
巨核细胞/血小板	CD41	MWReg30	FcA65674		
	CD11b	M1/70	FcA65672		
中性粒细胞	Ly-6G	242141B11	FcA98284		
	CD11b	M1/70	FcA65672		
红细胞	Glycophorin A/CD235a	242129D10	FcA98269		
	CD4	241955C11	FcA98252		
Rat	T细胞	CD8a	OX-8	FcA65577	
		CD43	W3/13	FcA65607	
Isotype Control	同型对照	Rabbit IgG	240953C9	FcA98136	
Others	其他	GGGS Linker	242306C8	FcA98262	
		6*His, His-Tag	251107A1	FcA98450	
		HA Tag	251110A1	FcA98447	

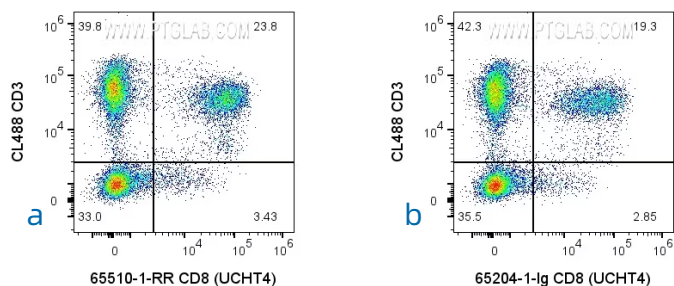
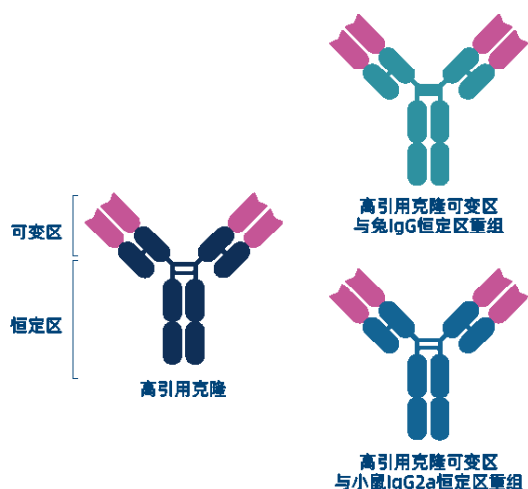
更多产品请登录官网查看

Uni-rAb™ 传统骨架重组流式抗体

传统骨架重组流式抗体包含重组的鼠单抗 / 小鼠单抗。

高引用克隆重组流式抗体

Proteintech 将流式细胞术中高引用的高引用克隆抗原结合区与兔 IgG、小鼠 IgG2a 等的骨架重组，获得的抗体同时具备高引用克隆性能及重组抗体一致性优势。



▲ 高引用克隆重组抗体与高引用克隆流式抗体性能一致

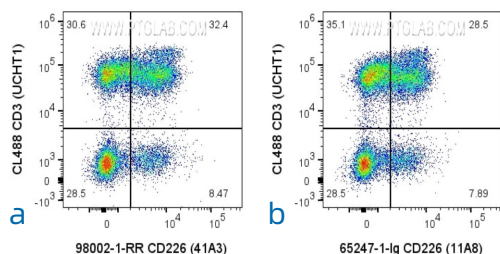
对 1×10^6 人 PBMCs 进行表面染色，细胞未固定，对淋巴细胞进行圈门。

a 图：高引用克隆重组流抗：抗人 CD8 重组兔单抗 (65510-1-RR, clone: UCHT4);

b 图：高引用克隆流式抗体：抗人 CD8 小鼠单抗 (65204-1-Ig, clone: UCHT4)。

全新克隆重组流式抗体

源于 Proteintech 全新克隆的重组流式抗体经过固定和非固定染色多轮筛选及验证，确保具有最佳信号强度和最低背景。



◀ 用于流式细胞术的 Proteintech 重组抗体与经典克隆相比具有相似或更优越的性能。

对 1×10^6 人 PBMCs 进行染色，细胞未固定。

a 图：全新克隆重组流抗：

抗人 CD226 重组兔单抗 (98002-1-RR, Clone:230041A3)

b 图：高引用克隆流抗：

抗人 CD226 小鼠单抗 (65247-1-Ig, Clone:11A8)

Proteintech 可提供常见免疫细胞标志物流式抗体（持续上新中）

细胞类型	人	小鼠	细胞类型	人	小鼠
白细胞	CD45	CD45	自然杀伤细胞	CD16, CD56	NKp46, NK1.1(限品系)
造血干细胞	CD34, CD38(-), CD90	CD48(-), CD117	单核细胞	CD14, CD16, CD64	CD11b, CD115, Ly-6C, Ly-6G(-)
B 细胞	CD19, CD20	CD19, CD45R(B220)	巨噬细胞	CD14, CD68	CD11b, F4/80, CD68
T 细胞	CD3	CD3	M1 型巨噬细胞	CD80, CD86	CD80, CD86
活化 T 细胞	CD25, CD69	CD25, CD69	M2 型巨噬细胞	CD163, CD206	CD206
辅助性 T 细胞	CD3, CD4	CD3, CD4	巨核细胞 / 血小板	CD42b, CD62P	CD41, CD62P
Th1 细胞	CD3, CD4, IFN- γ	CD3, CD4, IFN- γ	红细胞	CD235a	TER-119
Th2 细胞	CD3, CD4, IL-4	CD3, CD4, IL-4	中性粒细胞	CD11b, CD16	CD11b, Ly-6G, Gr-1, CD115(-), Ly-6C(low/-)
Th9 细胞	CD3, CD4,	CD3, CD4	嗜碱性粒细胞	CD117(-), CD123	FceR1a
Th17 细胞	CD3, CD4,	CD3, CD4, IL-17	嗜酸性粒细胞	CD11b, Siglec-8	CD11b, F4/80
Th22 细胞	CD3, CD4,	CD3, CD4	间充质干细胞	CD44, CD73, CD90, CD105	CD44, CD73, CD90, CD105
调节性 T 细胞	CD4, CD25, CD127(low/-)	CD4, CD25, Foxp3	内皮细胞	CD31, CD34, CD105, CD144	CD31, CD34, CD105, CD144
细胞毒性 T 细胞	CD3, CD8	CD3, CD8			
树突状细胞	CD1c, CD83, CD141, CD209, MHC class II	CD11c, MHC class II			
浆细胞样树突状细胞	CD123, CD304	CD11c(int)			

※ 黑色字体靶标为 Proteintech 可提供的重组流式抗体，蓝色字体靶标为 Proteintech 可提供的杂交瘤来源流式抗体

热门 Uni-rAb™ 传统骨架重组流式抗体 (部分)

可提供 20 余种荧光染料偶联

种属	分类	抗体靶点	克隆号	货号	
Human	白细胞共同抗原	CD45	241670E10	98117-1-RR	
	B细胞	CD19	4G7	65562-1-MR	
		CD19	250499A2	98560-1-RR	
		CD20	2H7	65575-1-MR	
		CD79a	241299F3	98072-1-RR	
		CD79a	HM57	65610-1-MR	
	浆细胞	CD38	241246F9	98148-1-RR	
		CD138/Syndecan-1	240422C4	98051-1-RR	
	T细胞	CD2	241222E2	98134-1-RR	
		CD2	TS1/8	65565-1-MR	
		CD3	OKT3	65569-1-MR	
		CD3	UCHT1	65570-1-MR	
		CD3	SP34	98319-2-MR	
		CD4	240427E12	98042-1-RR	
		CD4	OKT4	65603-1-MR	
		CD5	240428A12	98054-1-RR	
		CD5	L17F12	65599-1-MR	
		CD5	UCHT2	65609-1-MR	
		CD7	242402H8	98204-1-RR	
		CD8	SK1	65630-1-MR	
		CD8	UCHT4	65559-1-MR	
		CD8a	OKT8	65604-1-MR	
		CD8a	243018F10	98470-2-RR	
		CD8b	241326A7	98103-1-RR	
		CD25/IL-2RA	240906E11	98469-1-RR	
		CD25/IL-2RA	BC96	65620-1-MR	
		CD69	241552F1	98173-1-RR	
		CD69	241552G10	98173-2-RR	
		CTLA-4/CD152	240793E8	98078-1-RR	
		LAG-3/CD223	243086D4	98435-2-RR	
		PD-1/CD279	240724G11	98068-1-RR	
		PD-1/CD279	EH12.2H7	65586-1-MR	
		TIGIT	240423C7	98023-2-RR	
		TIM3	241422H1	98115-1-RR	
		树突状细胞	CD11c	L161	65626-1-MR
			CD83	HB15e	65581-1-MR
	HLA-DR		L243	65560-1-MR	
	CD209		240907A4	98156-1-RR	
	NK细胞	CD16	3G8	65612-1-MR	
		CD16	242426C2	98387-1-RR	
		NCAM1/CD56	240078A7	98033-1-RR	
	单核细胞	CD94	241704E11	98172-1-RR	
		CD15	252342A1	98616-1-RR	
		CD16	3G8	65612-1-MR	
		CD16	242426C2	98387-1-RR	
	巨噬细胞	CD11b	ICRF44	65582-1-MR	
		CD14	230332D7	98040-1-RR	
		CD14	261C	65616-1-MR	
		CD68	KP1	65593-1-MR	
		CD68	241810G1	98242-1-RR	
		CD80	242913B11	98384-1-RR	
		CD86	240429C6	98043-1-RR	
		CD86	BU63	65592-1-MR	
		CD163	GHI/61	65561-1-MR	
		CD206	250381C1	98458-3-RR	
	造血干细胞	CD34	242069A6	98145-4-RR	
		CD38	241246F9	98148-1-RR	
		CD90	241290B2	98126-1-RR	
	间充质干细胞	STRO-1	STRO-1	65585-1-MR	
		CD44	F10-44-2	65608-1-MR	
		CD44	242345G9	98333-3-RR	
		CD73	AD2	65564-1-MR	
	巨核细胞/血小板	Endoglin/CD105	241196D9	98013-2-RR	
		CD42b	AK2	65588-1-MR	
	中性粒细胞	CD62P	AK4	65587-1-MR	
		CD11b	ICRF44	65582-1-MR	
		CD15	252342A1	98616-1-RR	
		CD16	3G8	65612-1-MR	
	CD16	242426C2	98387-1-RR		

种属	分类	抗体靶点	克隆号	货号	
Human	红细胞	Glycophorin A/CD235a	242822E1	98370-2-RR	
	内皮细胞	CD31	WM-59	65614-1-MR	
		CD31	251101E6	98533-1-RR	
		CD34	242069A6	98145-4-RR	
		Endoglin/CD105	241196D9	98013-2-RR	
		VE-cadherin/CD144	240755B2	98071-1-RR	
	Mouse	白细胞共同抗原	CD45	240356D1	98035-1-RR
		B细胞	CD19	242301C6	98287-1-RR
			CD19	1D3	65661-1-TR
		T细胞	CD2	241548A5	98193-1-RR
CD4			250263B7	98522-3-RR	
CD4			GK1.5	65662-1-TR	
CD4			RM4-4	65655-1-TR	
CD5			240244A7	98038-2-RR	
CD8a			242879C10	98472-2-RR	
CD8b			250480F2	98461-3-RR	
CD25/IL-2RA	242494H5		98288-1-RR		
CD69	250269C11		98440-2-RR		
CTLA-4/CD152	241100B8		98147-1-RR		
LAG-3/CD223	241294E11		98167-1-RR		
PD-1/CD279	240389B8		98080-1-RR		
PD-1/CD279	RMP1-14		65684-2-MR		
PD-1/CD279	RMP1-14		65684-1-TR		
TCR beta	H57-597		65678-1-AR		
树突状细胞	TIGIT	242242F11	98285-1-RR		
	CD11c	N418	65602-1-MR		
	MHC Class II (I-A/I-E)	M5/114.15.2	65663-1-TR		
NK细胞	NKp46/NCR1	241804A12	98198-1-RR		
	NKp46/NCR1	29A1.4	65667-1-TR		
单核细胞	CD94	18D3	65668-1-TR		
	CD11b	M1/70	65672-1-TR		
巨噬细胞	Ly-6G	242141B11	98284-1-RR		
	F4/80	241959G4	98236-1-RR		
	CD11b	M1/70	65672-1-TR		
	CD68	230504G5	98029-1-RR		
	CD80	241371E12	98158-1-RR		
肥大细胞	CD86	230476B8	98025-1-RR		
	CD206	240344D12	98031-1-RR		
	CD117/c-Kit	240246C11	98041-1-RR		
造血干细胞	FceR1a	242008G6	98289-1-RR		
	CD117/c-Kit	240246C11	98041-1-RR		
间充质干细胞	SLAM/CD150	242631G1	98348-1-RR		
	CD44	242666F8	98359-2-RR		
巨核细胞/血小板	CD73	241541G9	98199-1-RR		
	Endoglin/CD105	242305E7	98290-1-RR		
中性粒细胞	P-Selectin/CD62P	240766F5	98302-2-RR		
	CD11b	M1/70	65672-1-TR		
	Ly-6G	242141B11	98284-1-RR		
Rat	红细胞	Glycophorin A/CD235a	242129D10	98269-1-RR	
	内皮细胞	CD31	242041B5	98258-1-RR	
		Endoglin/CD105	242305E7	98290-1-RR	
		VE-cadherin/CD144	241953D4	98251-1-RR	
	CD4	241955C11	98252-1-RR		
T细胞	CD8a	OX-8	65577-1-MR		
	CD8a	250721G1	98484-2-RR		
	CD43	W3/13	65607-1-MR		
	CD45RA	OX-33	65578-1-MR		
NK细胞	NKp46/NCR1	241811E9	98250-1-RR		
	KLRB1/CD161	241840F3	98249-1-RR		
巨噬细胞	CD11b/c	OX42	65606-1-MR		
	CD80	3H5	65580-1-MR		
内皮细胞	CD31	250372H6	98457-1-RR		
	Rabbit IgG	240953C9	98136-1-RR		
Isotype Control	同型对照	Mouse IgG2a	MOPC-173	65571-1-MR	
		Mouse IgG2a, λ	252253A1	98600-1-MR	
		Mouse IgG2a, κ	252252A1	98599-1-MR	
		Rat IgG2a	250862A1	98427-1-TR	
Others	其他	GGGGS Linker	242306C8	98262-1-RR	
		Biotin	242355B1	98598-1-RR	

更多产品请登录官网查看

PBS-Only 级重组抗体

Proteintech 可提供 PBS-only 级别重组抗体产品，用于抗体标记，无需置换缓冲液或纯化，避免标记过程中的抗体损失。

- » 兼容荧光染料、金属同位素、寡核苷酸和酶等不同标记物
- » 经过内源性免疫学实验验证，确保特异性
- » 浓度1 mg/mL或2 mg/mL，便于实现标记流程化及标准化

为什么选 PBS-only 级别的抗体或者抗体对？

1. 抗体缓冲体系中的牛血清白蛋白（BSA）会与一抗竞争结合偶联物，影响抗体标记效率。
2. 抗体缓冲体系中的叠氮化钠（NaN₃）会抑制辣根过氧化物酶（HRP）的活性，同时具有细胞毒性，含有 NaN₃的抗体不适合用于细胞培养。
3. 抗体缓冲体系中的甘油浓度过高会影响分子扩散，导致染料分子和抗体分子不能充分结合。

热销 PBS-only 级重组抗体（部分）

抗体靶点	货号	克隆号	适用物种
4EBP1	83890-2-PBS	241055F11	Human
4EBP1	83890-4-PBS	241055H1	Human
ASC/TMS1	83858-1-PBS	240908B7	Mouse
ASC/TMS1	83858-2-PBS	240908C12	Mouse
Beta Catenin	80488-1-PBS	2J24	Human, Pig, Mouse, Rat, Zebrafish
CCL17/TARC	83278-2-PBS	230354C8	Human
DFNA5/GSDME	83454-4-PBS	240394E11	Human
FGF-21	83033-1-PBS	230236B2	Human
FGF-21	83033-2-PBS	230236C9	Human
FGR	83352-1-PBS	240275E5	Human
FGR	83352-3-PBS	240275F7	Human
GAT1	85060-2-PBS	242637D11	Human, Rat, Mouse
Glucagon/GLP-1	83659-1-PBS	240595B5	Human
GRP94	83147-2-PBS	230502F2	Human
GRP94	83147-4-PBS	230502H8	Human
HDAC1	83624-2-PBS	240614A10	Human
HDAC1	83624-4-PBS	240614G4	Human
HER2/ErbB2	84182-2-PBS	241409F9	Human
HER2/ErbB2	84182-3-PBS	241409H4	Human
HIF-1 alpha	80933-1-PBS	2K1	Human
HIF-1 alpha/HIF1A	83764-2-PBS	240767G1	Human
HMGB1	82973-2-PBS	230182C11	Human
HMGB1	82973-3-PBS	230182C2	Human
IFN-gamma	84246-2-PBS	241390B1	Human
IGF1	84782-1-PBS	241890A11	Rat
IL-1 beta	84136-2-PBS	241364B7	Mouse
IL-12/IL-23 p40	82865-6-PBS	240210E4	Mouse
IL-12/IL-23 p40	83008-6-PBS	241600G10	Human
IL-2	83558-1-PBS	240416C8	Human
IL-2	83558-4-PBS	240416D9	Human
IL-3 R Beta/CD131	84988-2-PBS	241823B6	Human
IL-6	83795-1-PBS	240701E8	Mouse
IL-6	83747-9-PBS	240670A2	Human

抗体靶点	货号	克隆号	适用物种
IL-6	83179-1-PBS	240003B1	Rat
ITGAV	84883-3-PBS	242376D12	Human
ITGAV	84883-4-PBS	242376E9	Human
Leptin	84072-2-PBS	240720C8	Human
MAX	82958-3-PBS	230215C6	Human
MAX	82958-5-PBS	230215G4	Human
MCP-1/CCL2	83157-6-PBS	230483B2	Mouse
MICA	83725-1-PBS	240735D5	Human
MICA	83725-3-PBS	240735D8	Human
MMP-9	82685-18-PBS	241224C6	Human
MSH3	82845-3-PBS	1J23	Human, Rat
NLRP3	80422-5-PBS	230052H5	Human
pan-RAS	81615-1-PBS	2I22	Human, Mouse, Rat, Pig
PARK2/Parkin	83224-2-PBS	240077C12	Human
Perilipin 1	83905-1-PBS	240994B2	Human
Perilipin 1	83905-3-PBS	240994H8	Human
Phospho-AKT (Ser473)	80455-1-PBS	2E17	Human, Mouse, Rat
Phospho-PERK/EIF2AK3 (Thr982)	82534-1-PBS	4E16	Human, Mouse
Phospho-STAT1 (Tyr701)	82674-10-PBS	1C5	Human
Phospho-STAT5A (Tyr694)/STAT5B (Tyr699)	80115-1-PBS	2P21	Human
Phospho-TDP43 (Ser409/410)	80007-1-PBS	6M10	Human, Mouse
PI3 Kinase p110 Alpha	82796-4-PBS	1B4	Human, Mouse, Rat
PRDX3	81833-1-PBS	1L11	Human, Mouse, Rat
PSMD1	83521-2-PBS	240458B3	Human, Mouse, Rat
PSMD1	83521-5-PBS	240458C4	Human
PTEN	80718-4-PBS	240134C10	Human
PTEN	80718-8-PBS	240134D12	Human
PTPRS	83833-2-PBS	241005C5	Human
PTPRS	83833-4-PBS	241005H7	Human
SMOC2	83268-2-PBS	240107F6	Human
SMOC2	83268-3-PBS	240107G1	Human
STAT2	80061-5-PBS	242685A1	Human
STAT3	80149-1-PBS	3H1	Human, Mouse
STAT6	82630-1-PBS	4F19	Human, Mouse, Rat
TDP-43 (C-terminal)	81350-1-PBS	5D17	Human, Mouse, Rat
TDP-43 (N-terminal)	80001-1-PBS	11N20	Human, Mouse, Rat
TDP-43 (N-terminal)	80002-1-PBS	16A22	Human, Mouse, Rat
TGF Beta 1	81746-2-PBS	230544B7	Human, Mouse, Rat
TNF-alpha	83721-5-PBS	240668E6	Human
TNF-alpha	83721-6-PBS	240668A4	Human
TNF-alpha	80258-2-PBS	240702B3	Mouse
TNF-alpha	82863-7-PBS	5G5	Rat
TNF-alpha	83721-2-PBS	240668H1	Human
Tubulin-beta	80676-1-PBS	8P15	Human
Tubulin-beta	80680-1-PBS	2E8	Human
UCH-L1/PGP9.5	84154-2-PBS	241107C5	Human
UCH-L1/PGP9.5	84154-3-PBS	241107G1	Human
UNC13A	83000-3-PBS	240017G8	Human
UNC13A	83000-4-PBS	240017G11	Human
UNC13A	83000-5-PBS	240017A6	Human, Mouse, Rat, Pig
UNC13A	83000-6-PBS	230469G2	Human, Rat
VEGFA	84093-2-PBS	241391G1	Mouse
YAP1	81099-1-PBS	5K11	Human
YAP1	81096-1-PBS	1M10	Human

重组抗体对

Proteintech 的 7000+ 抗体对采用内部专有的重组单抗及小鼠单抗技术研发生产，经过多重微珠阵列技术和双抗夹心 ELISA 平台的验证，批次间高度稳定，可大量稳定供应。

- 高特异性** 天然样本 / 亲和力 / CBA/ELISA 四重验证，确保高特异性
- 稳定供应** ABCe™ 重组抗体平台开发，高通量，高质量
- PBS-only** 无 BSA、NaN₃ 与甘油，无需纯化，节省操作及成本

自身免疫疾病

骨代谢

心血管标志物

糖尿病

消化和代谢类

激素

肾功能

肺功能

肝功能

甲状腺功能

生殖与妊娠

神经科学

血清学相关

炎症标志物

肿瘤标志物

流式诊断

适用多种平台

固相捕获多因子检测平台

- 抗体芯片平台
- 流式细胞微珠阵列平台
- 单分子免疫阵列平台
- 电化学发光诊断平台

固相捕获单因子检测平台

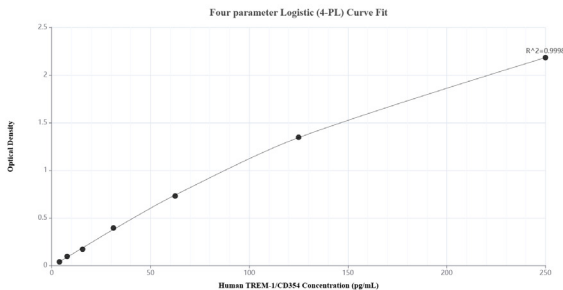
- 酶联免疫检测平台
- 化学发光诊断平台
- 免疫胶体金技术平台
- 荧光免疫层析平台
- 均相光激化学发光免疫分析平台
- 免疫比浊诊断平台
- 荧光共振能量转移诊断平台

液相多组学检测平台

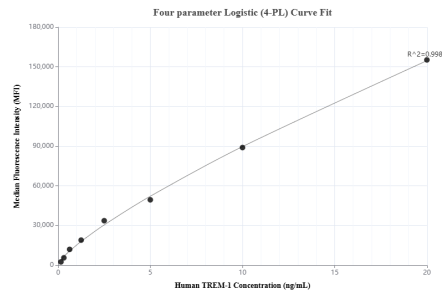
- 邻位延伸诊断平台
- 邻位连接诊断平台
- 邻近编码诊断平台
- 核酸偶联免疫夹心法平台

TREM-1/CD354 重组抗体对 (MP00988-1)

CBA 及双抗夹心 ELISA 标准曲线

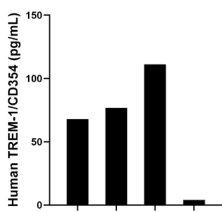


检测范围: 0.156-20 ng/mL

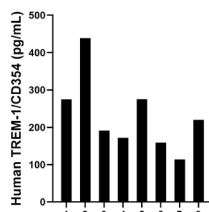


检测范围: 3.91-250 pg/mL

天然样本检测数据

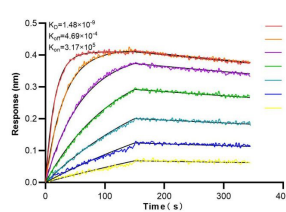


▲ 4份健康人唾液样本检测图。检测样品的TREM-1/CD354浓度为65.0 pg/mL，范围为4.0-111.2 pg/mL。

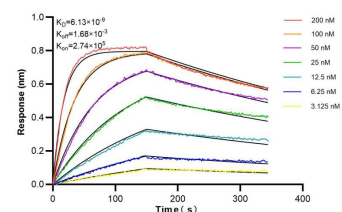


▲ 8份健康人血清样本检测图。检测样品的TREM-1/CD354浓度为230.6 pg/mL，范围为113.8-438.7pg/mL。

天然样本检测数据



▲ TREM-1/CD354重组捕获抗体 (84071-3-PBS)的亲和力和动力学表征，亲和常数为 1.48 nM



▲ TREM-1/CD354重组检测抗体 (84071-2-PBS)的亲和力和动力学表征，亲和常数为 6.13 nM

热销重组抗体对 (部分)

检测靶标	抗体对货号	适用种属
Adiponectin receptor	MP01830-2	Human
AFP	MP00001-4	Human
AFP	MP00395-4	Mouse
AKR1C3	MP01647-2	Human
ALDH1B1	MP01995-1	Human
Alpha-1-Antitrypsin	MP00022-1	Human
Alpha-1-microglobulin	MP00658-2	Human
AMACR/p504S	MP01623-3	Human
Amyloid-β	MP01584-3	Human
Apolipoprotein A II/APOA2	MP02042-3	Human
Apolipoprotein AI	MP00760-2	Human
Aquaporin 4	MP00781-4	Human
ARK5	MP01658-1	Human
ATG12	MP01715-3	Human
ATP1A2	MP01738-1	Human
BCL11A	MP01680-2	Human
BCL3	MP01655-3	Human
Beta-2-Microglobulin	MP00673-3	Human
BMPR2	MP01947-3	Human
C9	MP01620-3	Human
CA2	MP01702-2	Human
Cadherin 17	MP00742-4	Human
Cannabinoid receptor 2	MP01799-3	Human
Caspase 9	MP01714-2	Human
CCKAR	MP01958-1	Human
CCR2a-specific	MP01725-1	Human
CD105	MP00089-1	Human
CD105	MP01582-2	Mouse
CD16a	MP01617-3	Human
CEA	MP00626-3	Human
CHRNA3	MP01633-3	Human
CNDP2	MP01668-3	Human
Collagen Type I	MP00716-3	Human
Complement C2	MP01780-3	Human
Complement factor H	MP01827-2	Human
CPSF7	MP01956-1	Human

检测靶标	抗体对货号	适用种属
CTR9	MP01950-1	Human
CUL4B	MP01736-1	Human
CXCL1	MP00698-3	Rat
CYP17A1	MP02011-3	Human
Cystatin A	MP01707-1	Human
Cytochrome c	MP01934-3	Human
Cytokeratin 6B	MP01943-2	Human
DCP1A	MP01815-3	Human
DDX46	MP01807-1	Human
DNA ligase III/LIG3	MP01953-3	Human
DNMT3A	MP01598-3	Human
Eg5	MP01688-1	Human
EGF	MP01595-1	Human
EHD2	MP01971-3	Human
EZH2	MP01605-3	Human
Factor IX/PTC	MP01390-1	Human
FEN1	MP01694-3	Human
FGF-21	MP00005-1	human
FGF-23	MP00079-1	human
Filamin B	MP01960-1	Human
FLT3 Ligand	MP02023-3	Human
FUT4	MP01607-2	Human
GABPA	MP01698-1	Human
Galectin-3	MP01833-1	Human
Galectin-3	MP01833-2	Human
GATA3	MP01933-1	Human
GATA6	MP01729-1	Human
GBE1	MP01824-3	Human
G-CSFR	MP01609-3	Human
GHR	MP01942-3	Human
GLUD2	MP01985-3	Human
GM-CSF	MP00521-3	Human
GM-CSF	MP00306-3	Mouse
GPR56	MP01673-1	Human
Haptoglobin	MP00779-1	Human
HCN1	MP01612-1	Human

检测靶标	抗体对货号	适用种属
HER2	MP01080-1	Human
HER2	MP01039-4	Mouse
HGD	MP01681-3	Human
Histone H1.0	MP00895-1	Human
HMGB1	MP00311-1	human
HMGB1	MP00311-2	human
HMGB2	MP00480-3	Human
HNRNPR	MP01784-3	Human
HOMER1	MP02028-3	Human
IFN-γ	MP01131-1	Human
IGFBP1	MP00355-3	Human
IL-1 beta	MP00331-2	Human
IL-1 beta	MP01046-3	Mouse
IL-1 beta	MP01046-4	Mouse
IL-1 beta	MP01210-1	Rat
IL-10	MP00507-4	Mouse
IL-13RA2	MP02013-1	Mouse
IL-13RA2	MP02013-2	Mouse
IL-13RA2	MP02013-3	Mouse
IL-2	MP00535-3	Rat
IL-22	MP00657-2	Human
IL-2RA	MP00837-3	Human
IL-4	MP00829-3	Human
IL-4	MP01293-4	Rat
IL-5	MP00921-2	Human
IL-5RA/CD125	MP01699-3	Human
IL-6	MP00264-2	Rat
IL-6	MP00687-4	Human
IL-6	MP00756-4	Mouse
IL-8	MP00830-3	Human
ILK	MP01945-3	Human
IMPDH1	MP01726-1	Human
IRF7	MP01791-2	Human
JAM2	MP01977-3	Human
JNK	MP01616-2	Human
JUNB	MP01695-3	Human

检测靶标	抗体货号	适用种属
KCNA3	MP01808-1	Human
KIM-1/HAVCR1	MP00116-3	mouse
KIM-1/HAVCR1	MP00213-3	Rat
KIM-1/HAVCR1	MP01449-1	Human
KTN1	MP02037-3	Human
Lactotransferrin/LTF	MP00429-1	Human
LAG-3/CD223	MP02008-3	Human
LAMB3	MP01812-1	Human
Leptin	MP00639-2	Rat
Leptin	MP00993-1	Human
Lipocalin-2/NGAL	MP00790-4	Rat
Lp-PLA2	MP02319-1	Human
LRRFIP1	MP01600-1	Human
Mammaglobin A	MP02024-3	Human
MCP-1/CCL2	MP00168-4	Mouse
MCP-1/CCL2	MP00390-3	Rat
MCP-1/CCL2	MP00938-1	Human
MEK2	MP01692-1	Human
Methylmalonyl Coenzyme A mutase/ MUT	MP01652-1	Human
MLH1	MP01140-2	Human
MTHFD1	MP01654-3	Human
NCR1	MP01763-1	Human
NCX1	MP01816-1	Human
NDUFB8	MP00204-2	Human
NGAL	MP00770-1	Human
Ninein	MP01704-2	Human
NNMT	MP01628-3	Human
NOX1	MP01957-1	Human
NUAK2	MP01626-3	Human
Osteopontin	MP00375-1	Human
PARN	MP01955-3	Human
PCNA	MP00424-4	Human
PDE10A	MP01645-2	Human
PDE5A	MP01762-3	Human
PD-L1/CD274	MP00601-4	Human
PEX1	MP01946-3	Human
PFKFB4	MP01998-1	Human

检测靶标	抗体货号	适用种属
PGLYRP1	MP01966-2	Human
PI4K2A	MP01939-3	Human
PISD	MP01640-2	Human
PLSCR1	MP01664-3	Human
PMS2	MP01663-3	Human
PPA1	MP01999-2	Human
PPIL6	MP01635-2	Human
PPP1CB	MP01723-2	Human
PrP	MP01974-3	Human
PSA	MP00975-3	Human
PSMA	MP01454-1	Human
PSMC3IP	MP01685-2	Human
PTEN	MP00328-6	Human
PTH	MP01717-3	Human
RAD21	MP01677-2	Human
RAD50	MP01720-3	Human
RAF1	MP01739-1	Human
RBP4	MP01338-1	Human
RBPMS	MP01817-3	Human
RCN2	MP01713-1	Human
REST	MP01629-3	Human
RFC2	MP01625-2	Human
RGS12	MP01790-2	Human
RIOK3	MP01940-2	Human
RNF20	MP02014-3	Human
ROD1	MP01782-2	Human
RPS3	MP01686-2	Human
RPS4X	MP01754-3	Human
RSPH9	MP01764-1	Human
S100A9	MP00569-4	Human
S1PR1/EDG1	MP01781-3	Human
SALL4	MP00137-2	human
Serotonin transporter	MP01613-1	Human
SESN3	MP01604-2	Human
SHC1	MP01619-2	Human
SKP2	MP02007-3	Human
SLC27A6	MP01755-2	Human
SMARCA2	MP01752-3	Human

检测靶标	抗体货号	适用种属
SNRNP200	MP01734-2	Human
SNRPA1	MP02027-3	Human
SOX17	MP01724-2	Human
SPINT2/HAI-2	MP02034-3	Human
STAU1	MP01603-2	Human
SYP/Synaptophysin	MP00345-4	Human
TBC1D5	MP01735-2	Human
TCEA1	MP02021-3	Human
TEAD4	MP01682-3	Human
TIMP	MP00245-4	Human
TLR6	MP01727-1	Human
TNF-alpha	MP00682-2	Mouse
TNF-alpha	MP00702-1	Human
TNF-alpha	MP00702-4	Human
TNF-alpha	MP02049-1	Rat
TNFR1/CD120a	MP00099-3	Human
TPX2	MP01821-3	Human
TRIM27	MP01671-1	Human
TRIM56	MP01657-3	Human
TRIM63	MP01610-1	Human
TRPA1	MP01728-1	Human
TSG101	MP01221-2	Human
Tslp	MP01963-1	Mouse
TYRO3	MP01701-3	Human
UBE4B	MP02017-3	Human
UCH-L1/PGP9.5	MP01079-2	Human
USP33	MP01703-3	Human
VEGF	MP00561-2	Mouse
VEGF	MP00561-4	Mouse
VEGF	MP00598-3	Rat
VEGF	MP01495-1	Human
VEGFR2	MP00012-3	Human
vWF	MP00810-3	Human
WAPL	MP01615-1	Human
XDH	MP01961-1	Human
YBX1	MP01766-1	Human
β-tubulin-III	MP00550-1	Human



扫码体验
生物科研智能体 Able



查抗体 找 Able

查活动 找 Able

查实验方案 找 Able



READING THE BOOK OF LIFE



WeChat Official Account

Proteintech Group, USA,
5400 Pearl Street, Suite 300,
Rosemont, IL 60018, USA
t. 1-888-478-4522
e. proteintech@ptglab.com

Proteintech Europe,
Manchester Science Park, Kilburn House,
Lloyd Street North, Manchester, M15 6SE
t. (+44)-161-22-66-144
e. europe@ptglab.com

San Ying Biotechnology, China,
D3-3, No.666 Gaoxin Avenue, Wuhan East Lake
Hi-tech Development Zone, Wuhan, P.R.C.
t. 86-27-87531629
e. Proteintech-CN@ptglab.com