

For Research Use Only

CoraLite®647 Mouse IgG2b Isotype Control (MPC-11)

Catalog Number: CL647-65128



Basic Information

Catalog Number:

CL647-65128

Size:

100tests, 0.5 mg/mL

Source:

Mouse

Isotype:

IgG2b

Purification Method:

Affinity purification

Immunogen Catalog Number:

GenBank Accession Number:

GeneID (NCBI):

16016

Full Name:

immunoglobulin heavy chain 3
(serum IgG2b)

CloneNo.:

MPC-11

Excitation/Emission maxima
wavelengths:

650 nm/665 nm

Applications

Tested Applications:

FC

Species Specificity:

Background Information

The MPC-11 immunoglobulin is useful as an isotype-matched control. The MPC-11 immunoglobulin has an unknown binding specificity and is used as an isotype control for mouse IgG2b antibodies. This antibody has been quality-tested for flow cytometry as negative control.

Storage

Storage:

Store at 2-8°C. Avoid exposure to light.

Storage Buffer:

PBS with 0.1% sodium azide and 0.5% BSA, pH 7.3.

For technical support and original validation data for this product please contact:

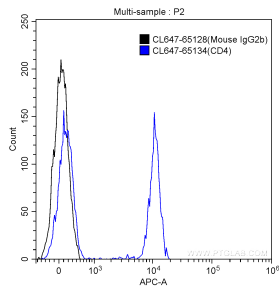
T: 4006900926

E: Proteintech-CN@ptglab.com

W: ptgcn.com

This product is exclusively available under Proteintech Group brand and is not available to purchase from any other manufacturer.

Selected Validation Data



1X10⁶ human peripheral blood lymphocytes were surface stained with 0.5 ug CoraLite® 647 Anti-Mouse IgG2b Isotype Control (CL647-65128, Clone:MPC-11) (blue) or CoraLite® 647-conjugated Anti-Human CD4 (CL647-65134, clone: OKT4) (black). Cells were not fixed.