

For Research Use Only

CoraLite® Plus 488 Mouse IgG2b Isotype Control (MPC-11)

Catalog Number:CL488-65128



Basic Information

Catalog Number:

CL488-65128

Size:

100ug, 0.5 mg/ml

Source:

Mouse

Isotype:

IgG2b, kappa

GenBank Accession Number:

GeneID (NCBI):

16016

UNIPROT ID:

P01867

Full Name:

immunoglobulin heavy chain 3 (serum IgG2b)

Purification Method:

Affinity purification

CloneNo.:

MPC-11

Excitation/Emission maxima wavelengths:

493 nm / 522 nm

Applications

Tested Applications:

FC

Species Specificity:

n/a

Background Information

The MPC-11 immunoglobulin is useful as an isotype-matched control. The MPC-11 immunoglobulin has an unknown binding specificity and is used as an isotype control for mouse IgG2b antibodies. This antibody has been quality-tested for flow cytometry as negative control.

Storage

Storage:

Store at 2-8°C. Avoid exposure to light. Stable for one year after shipment.

Storage Buffer:

PBS with 0.1% sodium azide and 0.5% BSA, pH 7.3.

For technical support and original validation data for this product please contact:

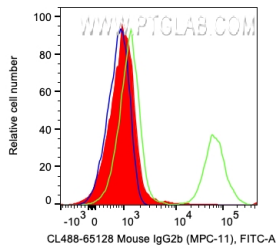
T: 4006900926

E: Proteintech-CN@ptglab.com

W: ptgcn.com

This product is exclusively available under Proteintech Group brand and is not available to purchase from any other manufacturer.

Selected Validation Data



1×10^6 human PBMCs were surface stained with 0.2 μ g CoraLite® Plus 488 Anti-Mouse IgG2b Isotype Control (CL488-65128, Clone:MPC-11) (red), or CL488 Anti-Human CD20 (green), or unstained (blue). Cells were not fixed. Lymphocytes were gated.