

For Research Use Only

APC Rat IgG2b Isotype Control (LTF-2)

Catalog Number: APC-65211

1 Publications



Basic Information

Catalog Number:

APC-65211

Concentration:

100ug, 0.2 mg/mL

Source:

Rat

Isotype:

IgG2b, kappa

GenBank Accession Number:

GeneID (NCBI):

Full Name:

Purification Method:

Affinity purification

CloneNo.:

LTF-2

Recommended Dilutions:

FC: 0.25 ug per 10⁶ cells in 100 µl suspension

Excitation/Emission maxima wavelengths:

650 nm / 660 nm

Applications

Tested Applications:

FC

Cited Applications:

FC

Species Specificity:

n/a

Positive Controls:

FC :,

Background Information

The LTF-2 immunoglobulin is useful as an isotype-matched control. The LTF-2 immunoglobulin has an unknown binding specificity and is used as an isotype control for rat IgG2b antibodies. This antibody has been quality-tested for flow cytometry as negative control.

Notable Publications

| Author | Pubmed ID | Journal | Application |
|----------|-----------|---------------------|-------------|
| Wensi Wu | 39236457 | Int Immunopharmacol | FC |

Storage

Storage:

Store at 2-8°C. Avoid exposure to light. Stable for one year after shipment.

Storage Buffer:

PBS with 0.09% sodium azide and 0.1% gelatin, pH7.2

For technical support and original validation data for this product please contact:

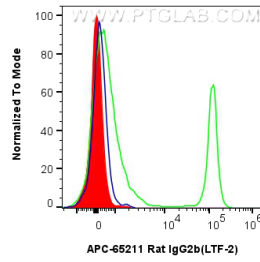
T: 4006900926

E: Proteintech-CN@ptglab.com

W: ptgcn.com

This product is exclusively available under Proteintech Group brand and is not available to purchase from any other manufacturer.

Selected Validation Data



1x10⁶ mouse splenocytes were surface stained with 0.25 ug APC Rat IgG2b Isotype Control (LTF-2) (APC-65211, Clone:LTF-2)(red) or APC Rat IgG2b Isotype Control (APC-65211, Clone: LTF-2) (green) or unstained (blue). Cells were not fixed.