

For Research Use Only

# PDE6A Monoclonal antibody

Catalog Number: 67832-1-Ig



## Basic Information

<b>Catalog Number:</b> 67832-1-Ig	<b>GenBank Accession Number:</b> BC035909	<b>Purification Method:</b> Protein G purification
<b>Concentration:</b> 1000 ug/ml	<b>GeneID (NCBI):</b> 5145	<b>CloneNo.:</b> 1B3B4
<b>Source:</b> Mouse	<b>UNIPROT ID:</b> P16499	<b>Recommended Dilutions:</b> WB 1:1000-1:4000
<b>Isotype:</b> IgG1	<b>Full Name:</b> phosphodiesterase 6A, cGMP-specific, rod, alpha	
<b>Immunogen Catalog Number:</b> AG16741	<b>Calculated MW:</b> 860 aa, 100 kDa	
	<b>Observed MW:</b> 100 kDa	

## Applications

<b>Tested Applications:</b> WB, ELISA	<b>Positive Controls:</b>
<b>Species Specificity:</b> human, mouse, rat	WB : mouse eye tissue, rat eye tissue, mouse retina tissue

## Background Information

PDE6A (Rod cGMP-specific 3',5'-cyclic phosphodiesterase subunit alpha) is also named as GMP-PDE alpha, PDE V-B1, PDEA and belongs to the cyclic nucleotide phosphodiesterase family. PDE6A contains an open reading frame capable of coding for a polypeptide of 859 amino acids and about 100 kDa. It is a subunit of a key phototransduction enzyme which participates in processes of transmission and amplification of the visual signal. The expression of PDE6 alpha in retina is essential for normal expression of PDE6 beta and PDE6 gamma.

## Storage

**Storage:**  
Store at -20°C. Stable for one year after shipment.  
**Storage Buffer:**  
PBS with 0.02% sodium azide and 50% glycerol, pH7.3  
Aliquoting is unnecessary for -20°C storage

For technical support and original validation data for this product please contact:

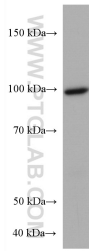
T: 4006900926

E: [Proteintech-CN@ptglab.com](mailto:Proteintech-CN@ptglab.com)

W: [ptgcn.com](http://ptgcn.com)

This product is exclusively available under Proteintech Group brand and is not available to purchase from any other manufacturer.

## Selected Validation Data



mouse eye tissue were subjected to SDS PAGE followed by western blot with 67832-1-Ig (PDE6A antibody) at dilution of 1:2000 incubated at room temperature for 1.5 hours.