

For Research Use Only

Rat IgG2b Isotype Control (LTF-2)

Catalog Number: 65211-1-Ig **2 Publications**



Basic Information

Catalog Number:

65211-1-Ig

Concentration:

500ug, 0.5 mg/mL

Source:

Rat

Isotype:

IgG2b, kappa

GenBank Accession Number:

GeneID (NCBI):

Full Name:

Purification Method:

Affinity purification

CloneNo.:

LTF-2

Recommended Dilutions:

FC: 0.25 ug per 10⁶ cells in 100 µl suspension

Applications

Tested Applications:

FC

Cited Applications:

IF

Species Specificity:

Positive Controls:

FC : ,

Background Information

The LTF-2 immunoglobulin is useful as an isotype-matched control. The LTF-2 immunoglobulin has an unknown binding specificity and is used as an isotype control for rat IgG2b antibodies. This antibody has been quality-tested for flow cytometry as negative control.

Notable Publications

Author	Pubmed ID	Journal	Application
Xinzhi Li	34893641	Nat Commun	
Sarah K Schröder	38464972	Front Endocrinol (Lausanne)	IF

Storage

Storage:

Store at 2-8°C. Stable for one year after shipment.

Storage Buffer:

PBS with 0.09% sodium azide, pH7.3

For technical support and original validation data for this product please contact:

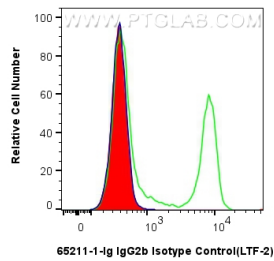
T: 4006900926

E: Proteintech-CN@ptglab.com

W: ptgcn.com

This product is exclusively available under Proteintech Group brand and is not available to purchase from any other manufacturer.

Selected Validation Data



1×10^6 mouse splenocytes were surface stained with 0.25 μ g Rat IgG2b Isotype Control (LTF-2) (65211-1-Ig, Clone: LTF-2) (red) or Anti-Mouse CD4 (GK1.5) (65104-1-Ig, Clone: GK1.5) (green), and FITC anti-rat IgG2b Antibody. Cells were not fixed.