

For Research Use Only

Mouse IgG2b Isotype Control (MPC-11)

Catalog Number: 65128-1-Ig



Basic Information

Catalog Number:

65128-1-Ig

Concentration:

500ug, 0.5 mg/mL

Source:

Mouse

Isotype:

IgG2b, kappa

GenBank Accession Number:

GeneID (NCBI):

16016

UNIPROT ID:

P01867

Full Name:

immunoglobulin heavy chain 3
(serum IgG2b)

Purification Method:

Affinity purification

CloneNo.:

MPC-11

Recommended Dilutions:

FC: 0.2 ug per 10⁶ cells in 100 μ l
suspension

Applications

Tested Applications:

FC

Species Specificity:

n/a

Positive Controls:

FC : human PBMCs,

Background Information

The MPC-11 immunoglobulin is useful as an isotype-matched control. The MPC-11 immunoglobulin has an unknown binding specificity and is used as an isotype control for mouse IgG2b antibodies. This antibody has been quality-tested for flow cytometry as negative control.

Storage

Storage:

Store at 2-8°C. Stable for one year after shipment.

Storage Buffer:

PBS with 0.09% sodium azide, pH7.3

For technical support and original validation data for this product please contact:

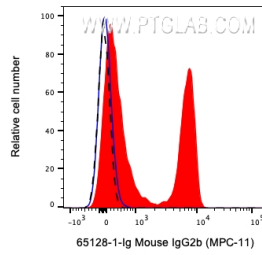
T: 4006900926

E: Proteintech-CN@ptglab.com

W: ptgcn.com

This product is exclusively available under Proteintech Group brand and is not available to purchase from any other manufacturer.

Selected Validation Data



1X10⁶ human PBMCs were surface stained with 0.2 ug Mouse IgG2b Isotype Control (65128-1-Ig, Clone:MPC-11) (blue), or Anti-Human CD4 (red) followed by CoraLite®594-Conjugated AffiniPure Goat Anti-Mouse IgG(H+L) at dilution 1:1000 or unstained (black). Cells were not fixed. Lymphocytes were gated.